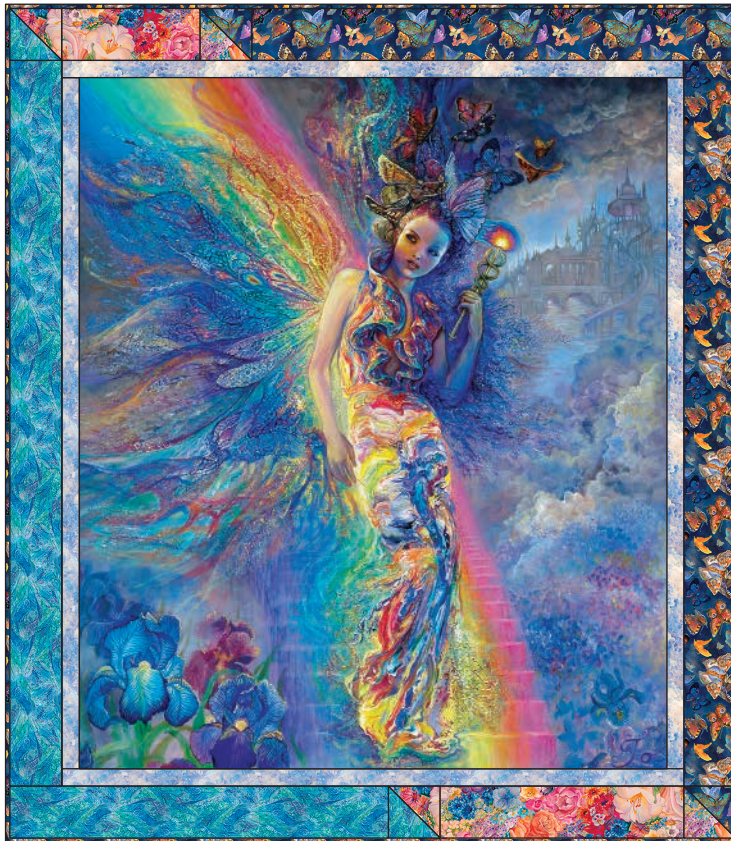




# Ray of Hope Quilt



Finished Size: 42 ½" x 48 ½" (107.95cm x 123.19cm)

## Fabric Needed

3 Wishes Fabric® Ray of Hope Collection by Josephine Wall

- 1 Panel (91.44cm) – Large Panel (16049-MUL-CTN-D)
- ¾ yd (68.58cm) – Butterflies (16048-MUL-CTN-D)  
for Piecing and Binding
- ⅓ yd (30.48cm) – Wings (16045-BLU-CTN-D)
- ¼ yd (22.86cm) – Clouds (16050-BLU-CTN-D)
- ¼ yd (22.86cm) – Floral (16046-MUL-CTN-D)
- 2 ¼ yds (205.74cm) – Floral (16046-MUL-CTN-D) for Backing

### ADDITIONAL SUPPLIES NEEDED:

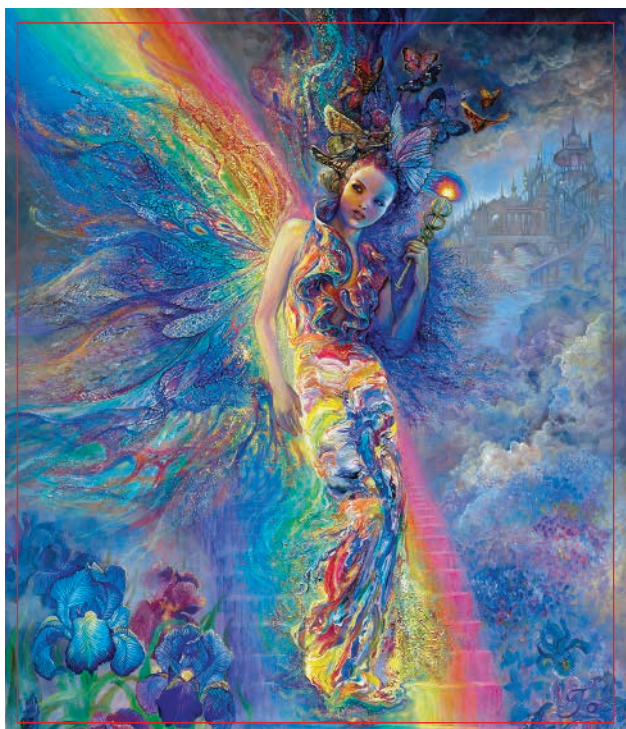
- 50" x 56" (127cm x 142.24cm) Cotton batting
- Piecing and sewing thread
- Quilting and sewing supplies
- Even-feed foot (optional for quilting)

# Before you begin

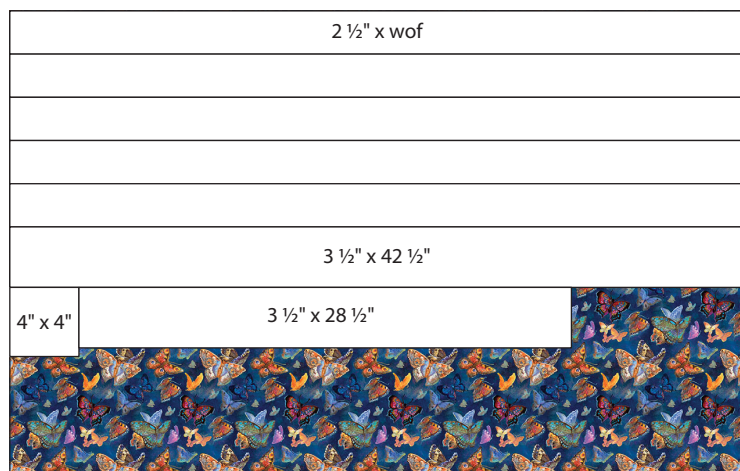
Read all instructions before beginning project. Do not pre-wash fabrics. Press fabrics with a dry iron on cotton setting before cutting. Use a ¼" (6.35mm) seam allowance and sew fabrics with right sides together (RST) unless otherwise noted. Press seams in the direction of the arrows. wof = width of fabric

## Cutting

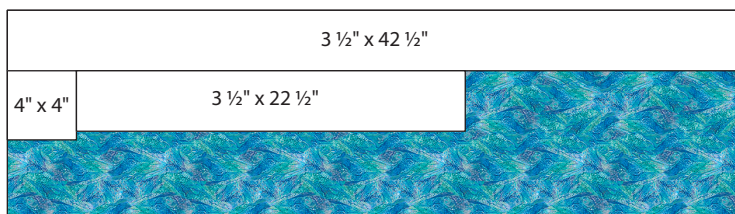
Use a rotary cutter and acrylic ruler to cut the number of pieces from each fabric listed below.



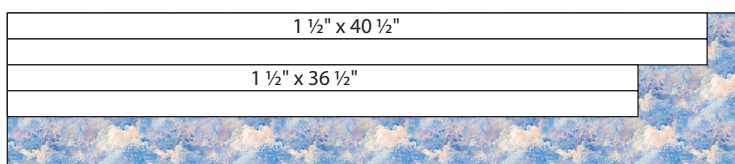
**Large Panel – 16049-MUL-CTN-D (1 yd x wof / 91.44cm x 106.68cm)**  
Fussy Cut 1 – 34 ½" x 40" (87.63cm x 102.87cm)



**Butterflies – 16048-MUL-CTN-D (¾ yd x wof / 68.58cm x 107.95cm)**  
Cut 5 – 2 ½" x wof (6.35cm x 106.68cm) for Binding  
Cut 1 – 3 ½" x 42 ½" (8.89cm x 107.95cm)  
Cut 1 – 4" x 4" (10.16cm x 10.16cm)  
Cut 1 – 3 ½" x 28 ½" (8.89cm x 72.39cm)



**Wings – 16045-BLU-CTN-D (⅓ yd x wof / 30.48cm x 107.95cm)**  
Cut 1 – 3 ½" x 42 ½" (8.89cm x 107.95cm)  
Cut 1 – 4" x 4" (10.16cm x 10.16cm)  
Cut 1 – 3 ½" x 22 ½" (8.89cm x 57.15cm)



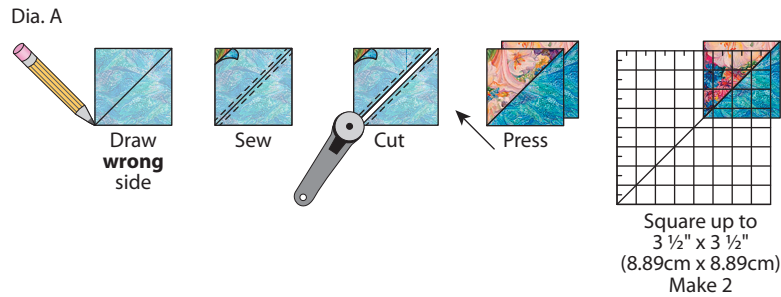
**Clouds – 16050-BLU-CTN-D (¼ yd x wof / 22.86cm x 107.95cm)**  
Cut 2 – 1 ½" x 40 ½" (3.81cm x 102.87cm)  
Cut 2 – 1 ½" x 36 ½" (3.81cm x 92.71cm)



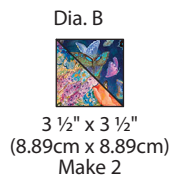
**Floral – 16046-MUL-CTN-D (¼ yd x wof / 22.86cm x 107.95cm)**  
Cut 2 – 4" x 4" (10.16cm x 10.16cm)  
Cut 1 – 3 ½" x 8 ½" (8.89cm x 21.59cm)  
Cut 1 – 3 ½" x 14 ½" (8.89cm x 36.83cm)

# Sewing

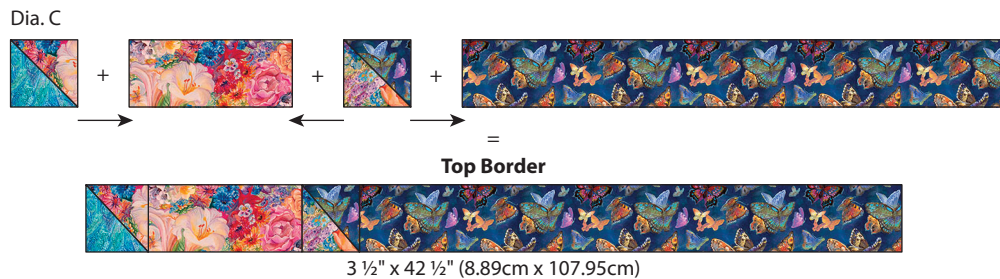
1. Refer to Diagram A to make the Half-Square Triangle (HST) Units. **Note:** Two squares yield two HST Units. Draw a diagonal line on the **wrong** side of the Wings (4" x 4" / 10.16cm x 10.16cm). Place a Wings square on top of a Floral square (4" x 4" / 10.16cm x 10.16cm) with RST and sew  $\frac{1}{4}$ " (6.35mm) away from the line on both sides. Cut on the drawn line; press to make two Wings/Floral Half-Square Triangle Units ( $3\frac{1}{2}$ " x  $3\frac{1}{2}$ " (8.89cm x 8.89cm). Trim if necessary.



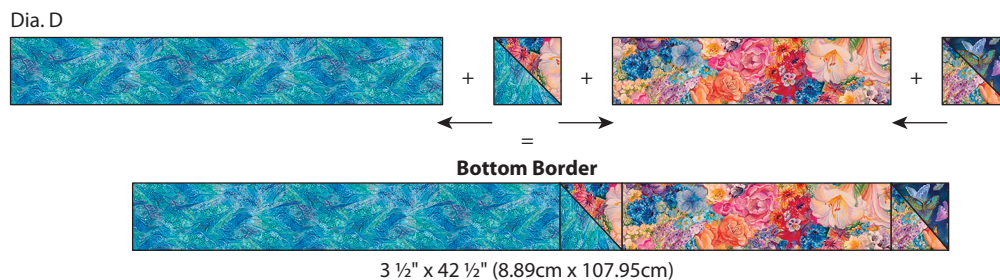
2. Repeat Step 1 and follow Diagram B using one Butterflies square (4" x 4" / 10.16cm x 10.16cm) and one Floral square (4" x 4" / 10.16cm x 10.16cm) to make two Butterflies/Floral Half-Square Triangle Units ( $3\frac{1}{2}$ " x  $3\frac{1}{2}$ " / 8.89cm x 8.89cm).



3. Follow Diagram C and place one Wings/Floral HST ( $3\frac{1}{2}$ " x  $3\frac{1}{2}$ " / 8.89cm x 8.89cm), one Floral Rectangle ( $3\frac{1}{2}$ " x  $8\frac{1}{2}$ " / 8.89cm x 21.59cm) one Butterflies/Floral HST ( $3\frac{1}{2}$ " x  $3\frac{1}{2}$ " / 8.89cm x 8.89cm) and one Butterflies rectangle ( $3\frac{1}{2}$ " x  $28\frac{1}{2}$ " / 8.89cm x 72.39cm) as shown. Pin RST, sew and press to make the Top Border ( $3\frac{1}{2}$ " x  $42\frac{1}{2}$ " / 8.89cm x 107.95cm).



4. Follow Diagram D and place one Wings rectangle ( $3\frac{1}{2}$ " x  $22\frac{1}{2}$ " / 8.89cm x 72.39cm), one Wings/Floral HST ( $3\frac{1}{2}$ " x  $3\frac{1}{2}$ " / 8.89cm x 8.89cm), one Floral Rectangle ( $3\frac{1}{2}$ " x  $14\frac{1}{2}$ " / 8.89cm x 36.83cm) and one Butterflies Floral HST ( $3\frac{1}{2}$ " x  $3\frac{1}{2}$ " / 8.89cm x 8.89cm) as shown. Pin RST, sew and press to make the Bottom Border ( $3\frac{1}{2}$ " x  $42\frac{1}{2}$ " / 8.89cm x 107.95cm).





5. Refer to Diagram E to place the Borders around the Fussy Cut Panel Center (34 ½" x 40 ½" / 87.63cm x 102.87cm). Pin and sew the Inner Side Borders first, then the Inner Top and Bottom Borders. Match ends, seams and middles. Press seams according to the arrows. Repeat to add the Outside Borders.

**Inside Border –**

Sides: Two Clouds rectangles (1 ½" x 40 ½" / 3.81cm x 102.87cm)

Top and Bottom: Two Clouds rectangles (1 ½" x 36 ½" / 3.81cm x 92.71cm)

**Outside Border – Note:** Orientation of each border.

Left Side: Wings rectangle (3 ½" x 42 ½" / 8.89cm x 107.95cm).

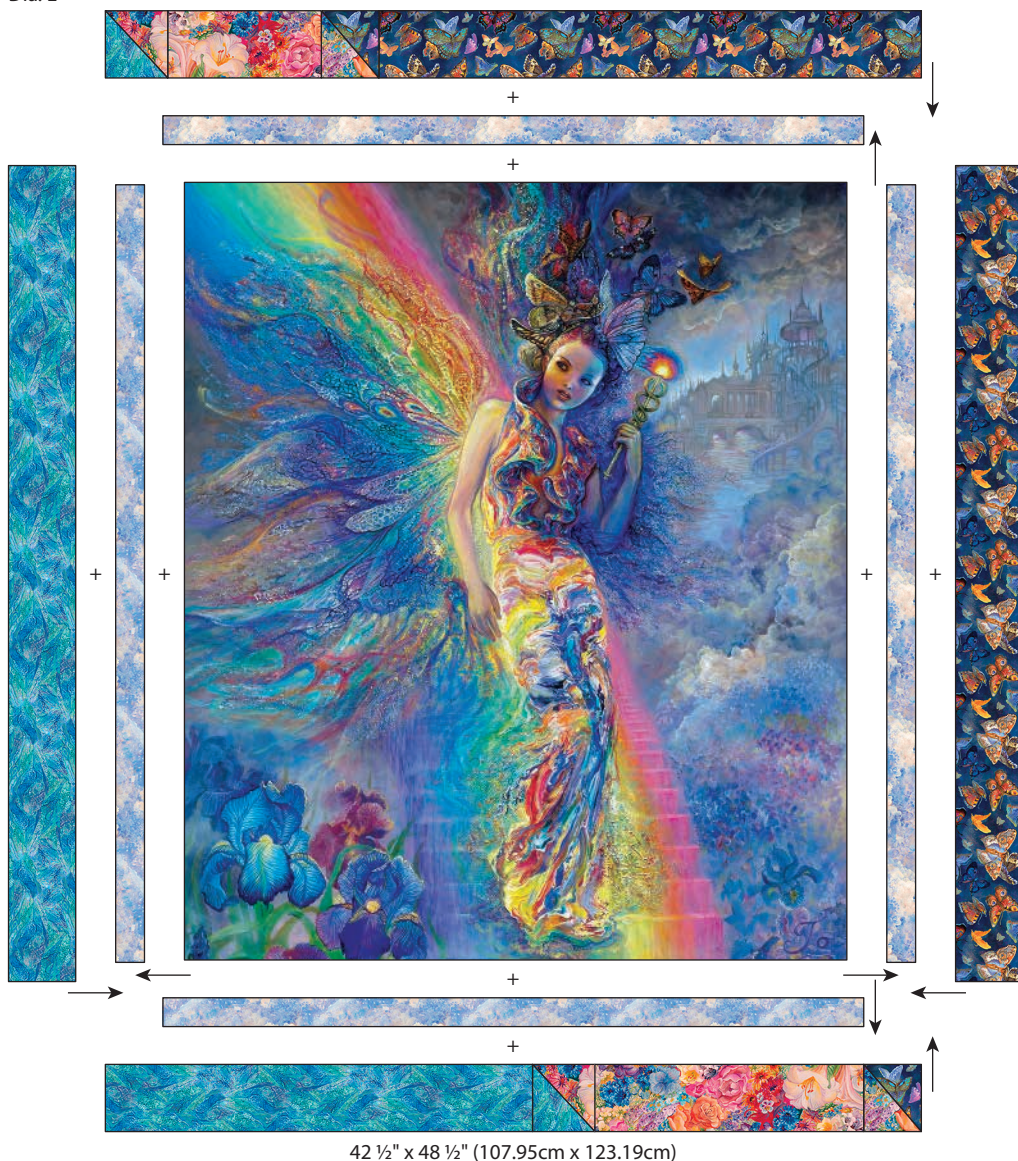
Right Side: Butterflies rectangle (3 ½" x 42 ½" / 8.89cm x 107.95cm).

Top: Made in Step 4 (3 ½" x 42 ½" / 8.89cm x 107.95cm).

Bottom: Made in Step 5 (3 ½" x 42 ½" / 8.89cm x 107.95cm).

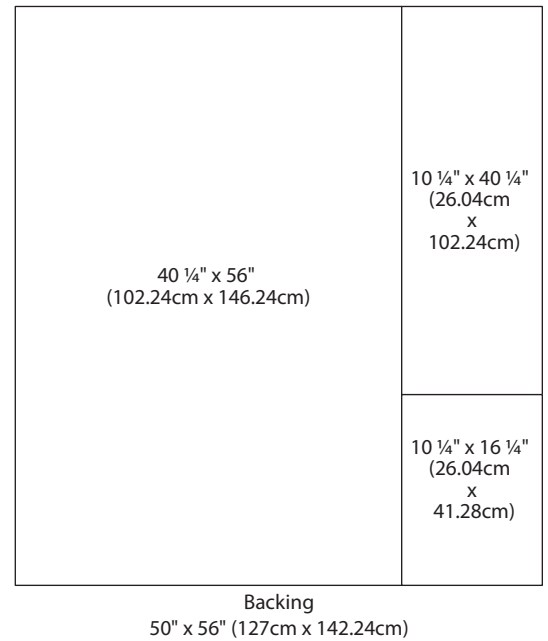
The finished Quilt Top should measure 42 ½" x 48 ½" (107.95cm x 123.19cm).

Dia. E

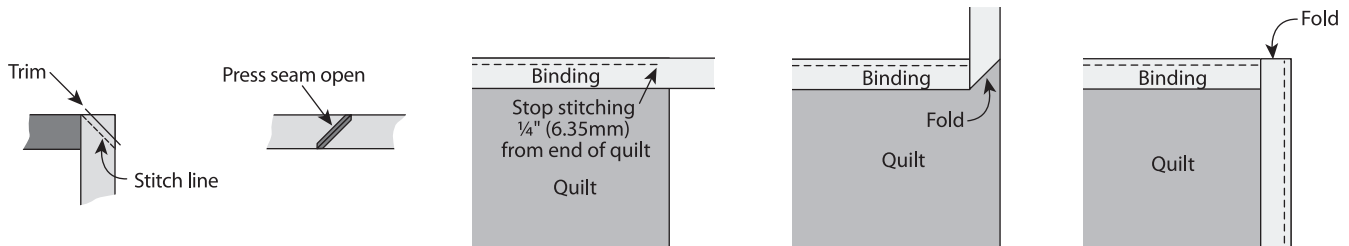


6. To make the Floral Backing, remove the selvages and cut one piece 40 1/4" x 56" (102.24cm x 142.24cm), one piece 10 1/4" x 40 1/4" (26.04cm x 102.24cm) and one piece 10 1/4" x 16 1/4" (26.04cm x 41.28cm). Pin RST and sew the two smaller pieces RST on the short edges; press. Pin the two sections RST and sew along the long edges as shown in Diagram F. Press the seam open or to one side. The Backing should measure 50" x 56" (127cm x 142.24cm).
7. Press finished Quilt Top and Backing. Tape the backing **wrong** side up to a firm surface. Layer batting and Quilt Top (right side up). Baste the layers together with safety pins. Quilt as desired.

Dia. F



8. Once quilting is complete, square up corners and edges, trimming excess Backing and batting even with the Quilt Top.
9. To make the Butterflies Binding, remove selvages and sew the short ends of the five 2 1/2" x wof (6.35cm x 106.68cm) strips RST end to end at a 45° angle to make one continuous strip; press seams open. Press one short end 1/4" (6.35mm) to the **wrong** side. Fold in half lengthwise with **wrong** sides together; press. Leaving a 2" (5.08cm) tail on the folded end, place cut edges of folded Binding even with the edge of the Quilt Top and sew, mitering the corners. Overlap ends, trim any excess and finish sewing the Binding. Fold Binding over to back and hand stitch.



## Finished Care Instructions

Machine wash in cold water; gentle cycle. Do not bleach. **Tip:** Before drying, check for fabric dyes that may have run. If fabric dyes run, rewash and rinse using a color catcher to absorb loose dye. Lay flat to dry or tumble dry low.