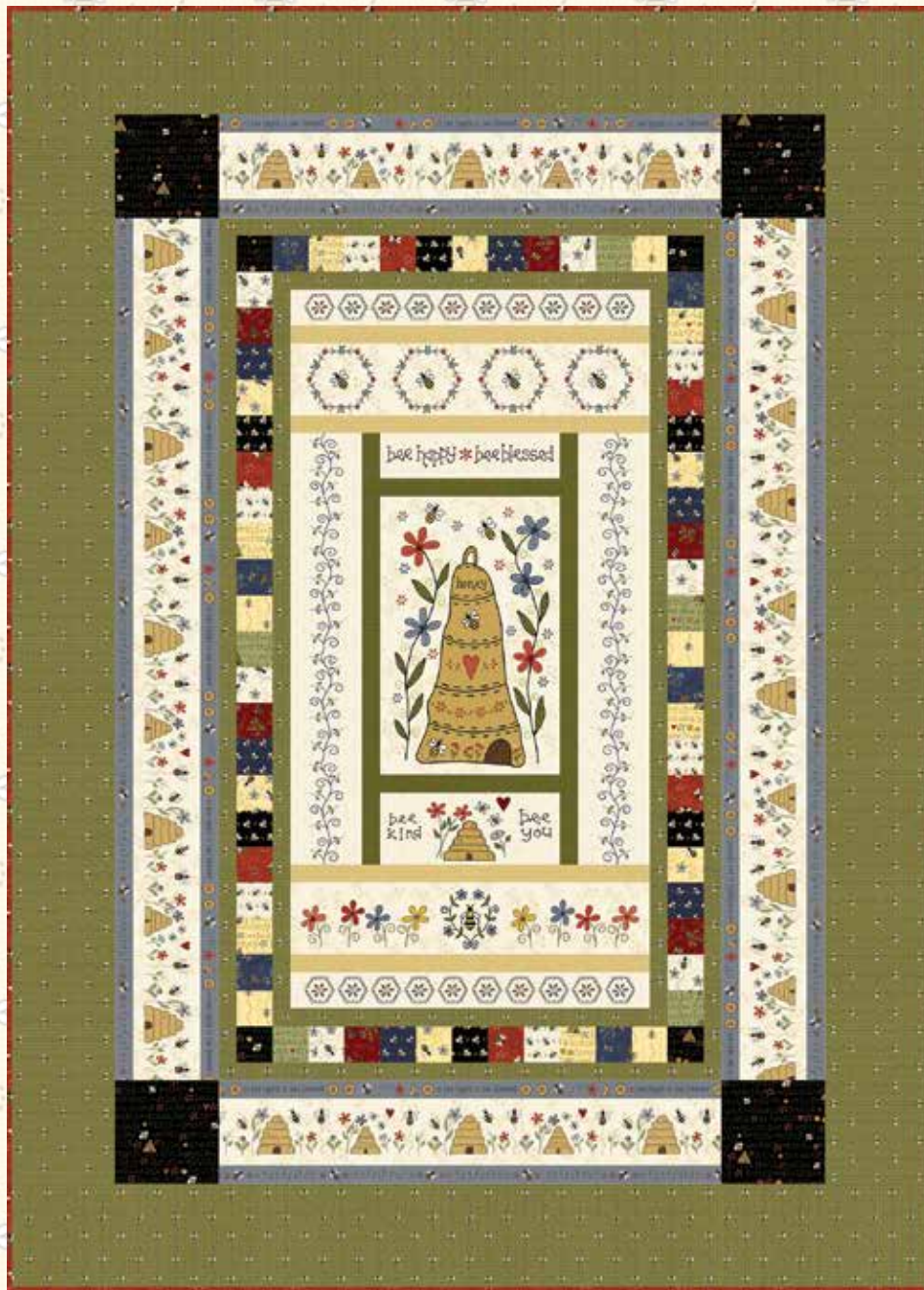


All About the Bees

A Free Project Sheet
NOT FOR RESALE

By Gail Pan

Quilt Design by Gail Pan



Quilt 1

Skill Level: Advanced Beginner

 Henry Glass & Co., Inc.



facebook

Finished Quilt Size: 51" x 71"
49 West 37th Street, New York, NY 10018
tel: 212-686-5194 fax: 212-532-3525

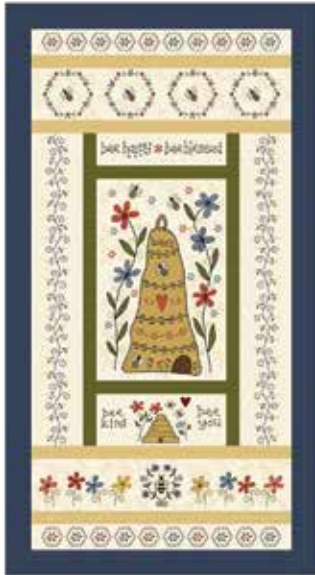
Toll Free: 800-294-9495

www.henryglassfabrics.net

Please check our website for pattern updates before starting this project.

ALL ABOUT THE BEES Quilt 1

Fabrics in the Collection



Bee Panel - Cream
2420P-33



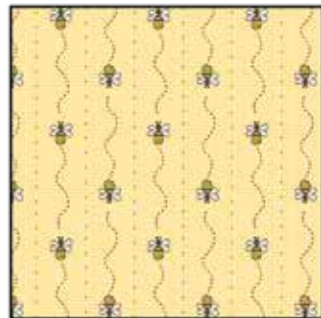
Bee Border Stripe - Cream
2421-33



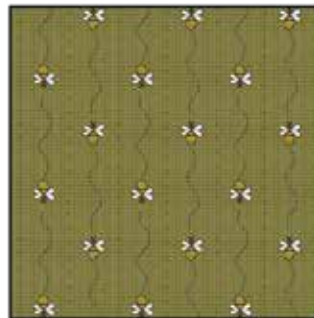
Bee Scatter - Blue
2422-77



Bee Scatter - Red
2422-88



Bee Mini Stripe - Yellow
2423-44



Bee Mini Stripe - Green
2423-66



Bee Hash Tag - Cream
2424-33



Bee Hash Tag - Blue
2424-77



Bee Hash Tag - Black
2424-99



Bee Trails - Cream
2425-33



Bee Trails - Yellow
2425-44



Bee Trails - Red
2425-88



Bee Words - Yellow
2426-44



Bee Words - Green
2426-66



Bee Words - Black
2426-99

Materials

1 panel	Bee Panel - Cream (A)	2420P-33
1 ½ yards	Bee Border Stripe - Cream (B)	2421-33
⅛ yard	Bee Scatter - Blue (C)	2422-77
⅛ yard	Bee Scatter - Red (D)	2422-88
⅛ yard	Bee Mini Stripe - Yellow (E)	2423-44
1 ¾ yards	Bee Mini Stripe - Green (F)	2423-66
⅛ yard	Bee Hash Tag - Cream (G)	2424-33
⅛ yard	Bee Hash Tag - Blue (H)	2424-77
⅛ yard	Bee Hash Tag - Black (I)	2424-99
⅛ yard	Bee Trails - Cream (J)	2425-33
⅛ yard	Bee Trails - Yellow (K)	2425-44
⅔ yard	Bee Trails - Red (L)	2425-88*
⅛ yard	Bee Words - Yellow (M)	2426-44
⅛ yard	Bee Words - Green (N)	2426-66
¼ yard	Bee Words - Black (O)	2426-99
4 ½ yards	Bee Hash Tag - Black (Backing)	2424-99

*Includes binding

Cutting Instructions

Please note: all strips are cut across the width of fabric (WOF) from selvage to selvage edge unless otherwise noted.

From the Bee Panel - Cream (A):

- Fussy cut (1) 20 ½" x 40 ½" panel.

From the Bee Border Stripe - Cream (B), fussy cut:

- (2) 6 ¼" x 48 ½" Length of Fabric (LOF) strips, centered on hives.
- (2) 6 ¼" x 28 ½" LOF strips, centered on hives.

From the Bee Scatter - Blue (C), cut:

- (1) 2 ½" x WOF strip. Sub-cut (6) 2 ½" squares.

From the Bee Scatter - Red (D), cut:

- (1) 2 ½" x WOF strip. Sub-cut (6) 2 ½" squares.

From the Bee Mini Stripe - Yellow (E), cut:

- (1) 2 ½" x WOF strip. Sub-cut (5) 2 ½" squares.

From the Bee Mini Stripe - Green (F), cut:

- (2) 6 ¼" x 60" LOF strips.
- (2) 6 ¼" x 51 ½" LOF strips.
- (2) 2" x 40 ½" LOF strips.
- (2) 2" x 23 ½" LOF strips.
- (2) 1 ½" x 46 ½" LOF strips.
- (2) 1 ½" x 28 ½" LOF strips.

From the Bee Hash Tag - Cream (G), cut:

- (1) 2 ½" x WOF strip. Sub-cut (6) 2 ½" squares.

From the Bee Hash Tag - Blue (H), cut:

- (1) 2 ½" x WOF strip. Sub-cut (6) 2 ½" squares.

From the Bee Hash Tag - Black (I), cut:

- (1) 2 ½" x WOF strip. Sub-cut (6) 2 ½" squares.

From the Bee Trails - Cream (J), cut:

- (1) 2 ½" x WOF strip. Sub-cut (6) 2 ½" squares.

From the Bee Trails - Yellow (K), cut:

- (1) 2 ½" x WOF strip. Sub-cut (6) 2 ½" squares.

From the Bee Trails - Red (L), cut:

- (1) 2 ½" x WOF strip. Sub-cut (6) 2 ½" squares.
- (7) 2 " x WOF strips or the binding.

From the Bee Words - Yellow (M), cut:

- (1) 2 ½" x WOF strip. Sub-cut (6) 2 ½" squares.

From the Bee Words - Green (N), cut:

- (1) 2 ½" x WOF strip. Sub-cut (5) 2 ½" squares.

From the Bee Words - Black (O), cut:

- (1) 6 ¼" x WOF strip. Sub-cut (4) 6 ¼" squares and (4) 2 ½" squares.

From the Bee Hash Tag - Black (Backing), cut:

- (2) 79" x WOF strips for the backing. Sew the strips together and trim to make the 59" x 79" back.

Block Assembly

1. Sew (1) 2" x 40 ½" Fabric F strip to each side of the 20 ½" x 40 ½" Fabric A panel. Sew (1) 2" x 23 ½" Fabric F strip to the top and to the bottom of the Fabric A panel. Trim the block to measure 22 ½" x 42 ½" to make the Center Block (Fig. 1).

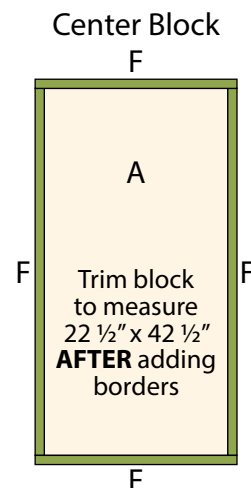


Fig. 1

2. Sew (21) assorted 2 ½” squares together to make (1) Inner Pieced Left Side Border (Fig. 2). Repeat to make the Inner Pieced Right Side Border (Fig. 3).

Inner Pieced Left Side Border

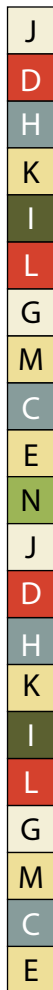


Fig. 2

Inner Pieced Right Side Border

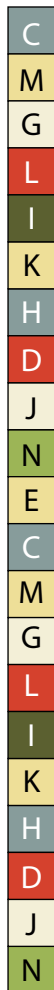


Fig. 3

3. Sew (13) assorted 2 ½” squares together to make (1) Inner Pieced Top Border (Fig. 4). Repeat to make the Inner Pieced Bottom Border (Fig. 5).

Inner Pieced Top Border

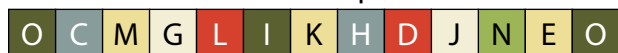


Fig. 4

Inner Pieced Bottom Border

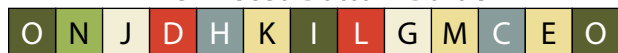


Fig. 5

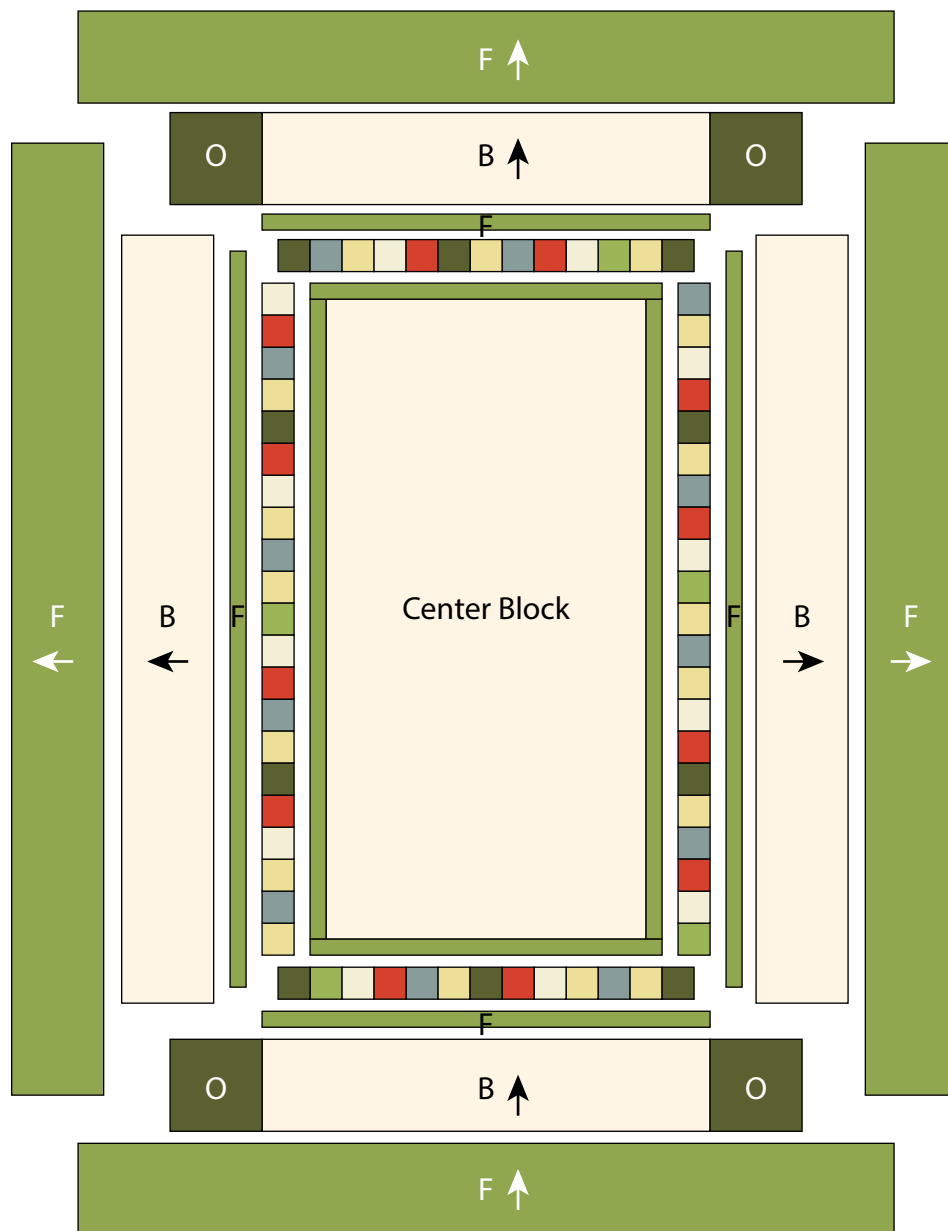
Quilt Top Assembly

(Follow the Quilt Layout while assembling the quilt top. The arrows in Quilt Layout represent the fabric print direction. Pay attention to the direction of the components when assembling the quilt top.)

- Sew the Inner Pieced Left Side Border and the Inner Pieced Right Side Border to the left and to the right of the Center Block. Sew the Inner Pieced Top Border and the Inner Pieced Bottom Border to the top and to the bottom of the Center Block.
- Sew (1) 1 ½” x 46 ½” Fabric F strip to each side of the Center Block. Sew (1) 1 ½” x 28 ½” Fabric F strip to the top and to the bottom of the Center Block.
- Sew (1) 6 ¼” x 48 ½” Fabric B strip to each side of the Center Block. Sew (1) 6 ¼” Fabric O square to each end of (1) 6 ¼” x 28 ½” Fabric B strip. Repeat to make a second strip. Sew the strips to the top and to the bottom of the Center Block.
- Sew (1) 6 ¼” x 60” Fabric F strip to each side of the Center Block. Sew (1) 6 ¼” x 51 ½” Fabric F strip to the top and to the bottom of the Center Block to make the quilt top.
- Layer and quilt as desired.
- Sew the (7) 2 ½” x WOF Fabric L strips together, end to end with 45-degree seams, to make the binding. Fold this long strip in half lengthwise with wrong sides together and press.
- Bind as desired.

ALL ABOUT THE BEES

Quilt 1



Quilt Layout

Every effort has been made to ensure that all projects are error free. All the information is presented in good faith, however no warranty can be given nor results guaranteed as we have no control over the execution of instructions. Therefore, we assume no responsibility for the use of this information or damages that may occur as a result. When errors are brought to our attention, we make every effort to correct and post a revision as soon as possible. Please make sure to check www.henryglassfabrics.net for pattern updates prior to starting the project. We also recommend that you test the project prior to cutting for kits. Finally, all free projects are intended to remain free to you and are not for resale.