

# REVERSIBLE TOTE BAG

Designed by Ramona Rose  
[www.ramonarose.net](http://www.ramonarose.net)

Featuring

## Kona<sup>®</sup> Cotton Color Chart



Finished project measures: 20" x 13" x 7-1/2"



Difficulty Rating: **Beginner**

**ROBERT KAUFMAN**  
F A B R I C S

For questions about this pattern, please email [Patterns@RobertKaufman.com](mailto:Patterns@RobertKaufman.com).

## Fabric and Supplies Needed

Fabric amounts based on yardage that is 42" wide.

| Color   | Fabric | Name/SKU                | Yardage                 | Color   | Fabric | Name/SKU               | Yardage  |
|---|--------|-------------------------|-------------------------|---|--------|------------------------|----------|
|  | A      | SRKD-19900-205<br>MULTI | 2/3 yard<br>(one panel) |  | B      | K001-845<br>SASSY PINK | 2/3 yard |
| Copyright 2019, Robert Kaufman<br>For individual use only - Not for resale        |        |                         |                         |   |        |                        |          |

## Notes Before You Begin

- Read through all of the instructions before beginning.
- All of the seam allowances are 1/4" unless otherwise noted.
- Press seam allowances open unless otherwise noted.
- Width of fabric (WOF) is equal to at least 42" wide.
- Right sides together has been abbreviated to RST.
- Remember to measure twice and cut once!

## Cutting Instructions

### From Fabric A, fussy cut:

two 11" x 40-1/2"

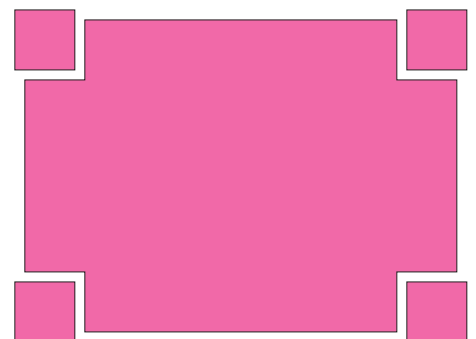
### From Fabric B, cut:

two 13" x 18" rectangles for the bag bottom

four 2-1/2" x 26" handle strips

## Prepare the Fabrics

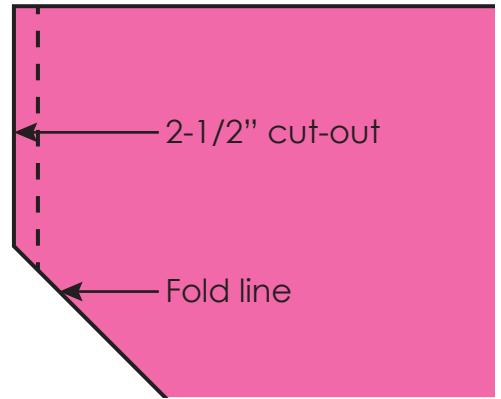
Cut one 2-1/2" square from each of the four corners of each Fabric B bag bottom piece, as shown.



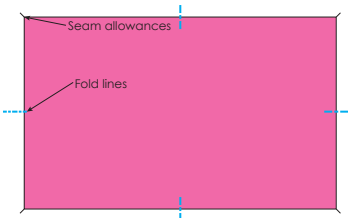
# Assemble the Bag

## Bag Bottom

**Step 1:** Starting with one Fabric B bottom piece, fold a corner right sides together and sew along the cut-out edge, backstitching at beginnings and endings to lock the stitches. Repeat for all other corners on both bottoms.



**Step 2:** Fold to find and mark the four mid-points between each corner.



## Bag Body

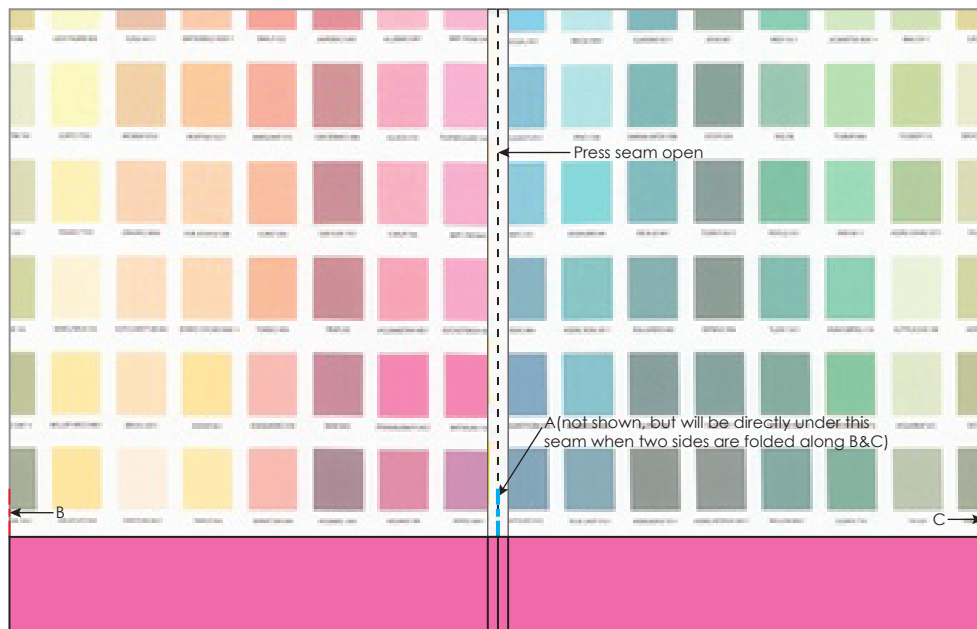
**Step 3:** Fold one Fabric A piece in half, short ends together, and sew along the short edge, making a loop.



**Step 4:** Press the seam open and, while folded, mark the top and bottom of the loop at the following points:

Mark the fold (A)

Mark the mid-point between the fold and the seam, on both the front and the back of the loop (B and C)



This divides the loop into quarters. Repeat Steps 3 and 4 with the second Fabric A piece.

### Outer Bag

**Step 5:** Match the bottom edge of a Fabric A loop with the top of a Fabric B bag bottom, right sides together, with a loop seam in the middle of a short side of the bag bottom. Then, match the other quarter marks (B and C) with the marks made on the bag bottom in Step 2. Pin at several points in between.

**Step 6:** Sew, with all the bottom corner seams towards a bottom short side. Press seams toward Fabric A, then edgestitch on Fabric A to reinforce the seam.

**Step 7:** Fold 1/2" of the top raw edge of the Fabric A loop to the wrong side so the raw edges will be sandwiched in between the outer and lining.



**Step 8:** Fold the bag so the loop seam is on a fold, and the opposite is on a fold. Measure in from the folds and mark (with a pin) 5" from each fold, on each side.



### Lining

**Step 9:** Repeat with the remaining Fabric B bottom and Fabric A loop, but this time, press seams toward the long sides of the bottom, and press the Fabric A piece toward Fabric B, edgestitching on the bottom fabric. By doing this, you'll place seams in opposite directions so the two bags, (outer and lining) can fit together without bulk.

**Step 10:** Place the Lining into the Outer, wrong sides together, and match up folds and pins. Set aside.

### Handles

**Step 11:** Place two handle strips right sides together and sew along both long edges, then turn right side out. Press, then repeat for other set of handle strips. Edgestitch or top stitch if desired for decoration or reinforcement. Mark 1" up from the bottom edge of each end of the handles.



## Finishing

**Step 12:** Lay the bag flat in front of you, with the Outer bag on the outside, Lining inside, and loop seams folded (so you're looking at a long edge of the bag bottom) Insert 1" of a handle edge between the left folded edge and the 5" pin, (butted up against the 5" pin), so the handle is between the Outer and Lining. Pin in place, and, make sure the handle isn't twisted. Repeat on the opposite end of the strap. Flip the bag over, and repeat again on the other side, making sure the handle placement matches.

Edgestitch along the top of the bag, keeping the handles out of the way as you sew, catching all layers of Outer and Lining and Handles. Repeat 1/4" and 1/2" from the top edge, more if desired for decoration or extra stability.



Stuff with quilts or groceries and enjoy!