

1409

Sketchbook Garden

By Lisa Audit



Queen Quilt: 90" x 100"



www.wilmingtonprints.com

Wilmington Prints: A World of Possibilities

Sketchbook Garden

Please read all instructions carefully AND identify all fabrics before beginning.

All instructions include a 1/4" seam allowance and strips are cut selvage to selvage, unless stated otherwise.



1. Cut the following:

Fabric A - PLEASE NOTE: Panels do not always print the size intended. For this pattern, the panel has a coping border added then trimmed so the panel will fit the quilt correctly.

Fussy cut 1/4" beyond outside edges of panel to approximately 23-1/2" x 42"



Fabric B - Referring to the quilt image, fussy cut strips, the length of fabric parallel to selvage: (2) 8-3/4" x 88" and (2) 8-3/4" x 68" multi-stripe borders

Fabric C - Cut (6) 5-1/2" strips, subcut (40) 5-1/2" squares

Fabric D - Cut (1) 6-1/4" strip, subcut (1) 6-1/4" square [then cut in half diagonally twice  for 4 triangles], (4) 5-7/8" squares [then cut in half diagonally  for 8 triangles], and (2) 3" squares

Cut (1) 5-1/2" strip, subcut (8) 3" x 5-1/2" pieces and (6) 3" squares

Cut (8) 2-1/4" strips, sewn together end to end and cut into (2) 2-1/4" x 84-1/2" and (2) 2-1/4" x 68" borders

Fabric E - Cut (1) 6-1/4" strip, subcut (1) 6-1/4" square [then cut in half diagonally twice  for 4 triangles], (2) 5-7/8" squares [then cut in half diagonally  for 4 triangles], and (2) 5-1/2" squares

Cut (10) 5-1/2" strips, subcut (42) 5-1/2" squares and (56) 3" x 5-1/2" pieces

Cut (4) 3" strips, subcut (56) 3" squares

Fabric F - Cut (2) 3" strips, subcut (24) 3" squares

Cut (10) 2-1/2" strips (binding)

Fabric G - Cut (2) 5-1/2" strips, subcut (24) 3" x 5-1/2" pieces

Cut (2) 3" strips, subcut (24) 3" squares

Fabric H - Cut (5) 3" strips, subcut (64) 3" squares

Cut (2) 2-3/4" strips, subcut (2) 2-3/4" x 27" strips

Cut (2) 2" strips

Fabric H - (continued)

Cut (14) 1-3/4" strips, sewn together end to end and cut into (2) 1-3/4" x 88", (2) 1-3/4" x 70-1/2", (2) 1-3/4" x 65-1/2", and (2) 1-3/4" x 48" borders

2. Piecing Order:

1. Sew 1 each

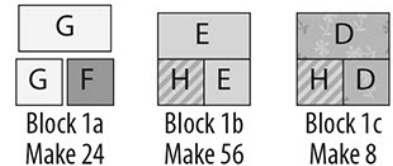
Fabrics F and G 3" squares

together. Add a

Fabric G

3" x 5-1/2" piece as shown. Make a total of

24 **Block 1a** (5-1/2" square unfinished). In the same manner, make 56 **Block 1b** and 8 **Block 1c** with fabrics indicated.



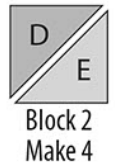
Block 1a
Make 24

Block 1b
Make 56

Block 1c
Make 8

Stripes indicate orientation of directional print.

2. Stitch **Fabrics D** and **E** 5-7/8" triangles together along their long edges. Make a total of 4 **Block 2** (5-1/2" square unfinished).



Block 2
Make 4

3. Sew **Fabrics D** and **E** 6-1/4" triangles together along their short edges as shown. Add a **Fabric D** 5-7/8" triangle as shown. Make a total of 4 **Block 3** (5-1/2" square unfinished).



Block 3
Make 4

4. Refer to Quilt Layout (Page 3) for arrangement and placement of blocks, 5-1/2" squares, panel, strips, and borders.

5. Stitch **Fabric H** 2" x width of fabric strips to sides of the **Fabric A** panel. Trim strip ends even. Add 2-3/4" x 27" **Fabric H** strips to top and bottom of panel. **Trim bordered panel to 25-1/2" x 45-1/2" (unfinished).**

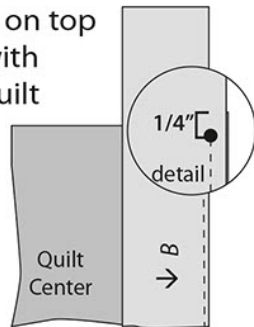
6. Arrange 6 **Block 1a**, 2 **Block 1b**, 1 **Block 3**, 8 **Fabric C** 5-1/2" squares, and 1 **Fabric E** 5-1/2" square in 9 rows on right and left sides of bordered panel. Stitch blocks and squares into rows. Sew rows into borders (10-1/2" x 45-1/2" unfinished). Stitch borders to right and left sides of bordered panel.

Sketchbook Garden

7. Arrange 6 **Block 1a**, 2 **Block 1b**, 1 **Block 3**, 8 **Fabric C** 5-1/2" squares, and 1 **Fabric E** 5-1/2" square in 2 rows above and below the bordered panel. Stitch blocks and squares into rows. Sew rows into borders (10-1/2" x 45-1/2" unfinished). Stitch borders to top and bottom of bordered panel. Quilt center measures 45-1/2" x 65-1/2" (unfinished).

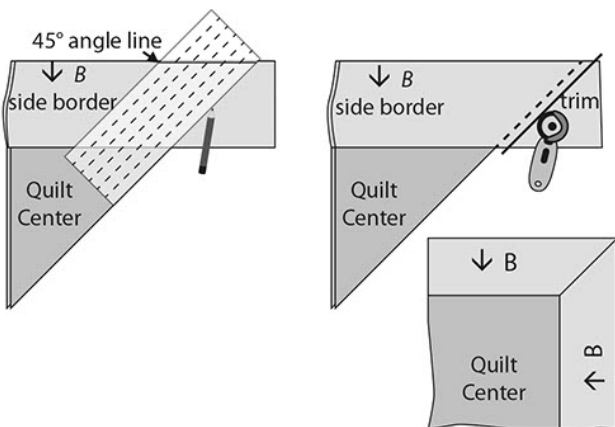
8. Sew **Fabric H** 1-3/4" x 65-1/2" borders to right and left sides of quilt center. Add **Fabric H** 1-3/4" x 48" borders to top and bottom of quilt center.

9. Center **Fabric B** 8-3/4" x 88" borders on right and left sides of quilt center and **Fabric B** 8-3/4" x 68" borders on top and bottom of quilt center with the butterfly stripe next to quilt center. Stitch borders to sides starting and stopping 1/4" from corners of quilt center. Do not trim. Press borders out.



*Letters in italics indicate wrong side of fabric.
Arrows indicate orientation of directional prints.*

10. Working with 1 corner at a time, fold the quilt right sides together so the outside edges of the borders line up. Using a 45-degree ruler, mark from the end of border seams to outer edges of borders. Stitch along marked line. Trim seam allowance to 1/4". Press corner seam open. Repeat on remaining corners.



11. Sew **Fabric D** 2-1/4" x 84-1/2" borders to right and left sides of quilt. Add **Fabric D** 2-1/4" x 68" borders to top and bottom.

12. Sew **Fabric H** 1-3/4" x 88" borders to right and left sides of quilt. Add **Fabric H** 1-3/4" x 70-1/2" borders to top and bottom.

13. Arrange 16 **Block 1b**, 2 **Block 1c**, 4 **Fabric C** 5-1/2" squares, and 14 **Fabric E** 5-1/2" squares in a 18 rows on right and left sides of quilt. Stitch blocks and squares into rows. Sew rows into borders (10-1/2" x 90-1/2" unfinished). Stitch borders to right and left sides of quilt.

14. Arrange 8 **Block 1b**, 2 **Block 1c**, 2 **Block 2**, and 6 **Fabric E** 5-1/2" squares in a row above and below the bordered panel. Stitch blocks and squares into borders (5-1/2" x 90-1/2" unfinished). Stitch borders to top and bottom of quilt.

15. The quilt measures approximately 90-1/2" x 100-1/2" (unfinished). Make backing (**Fabric I**) approximately 8" larger than the top.

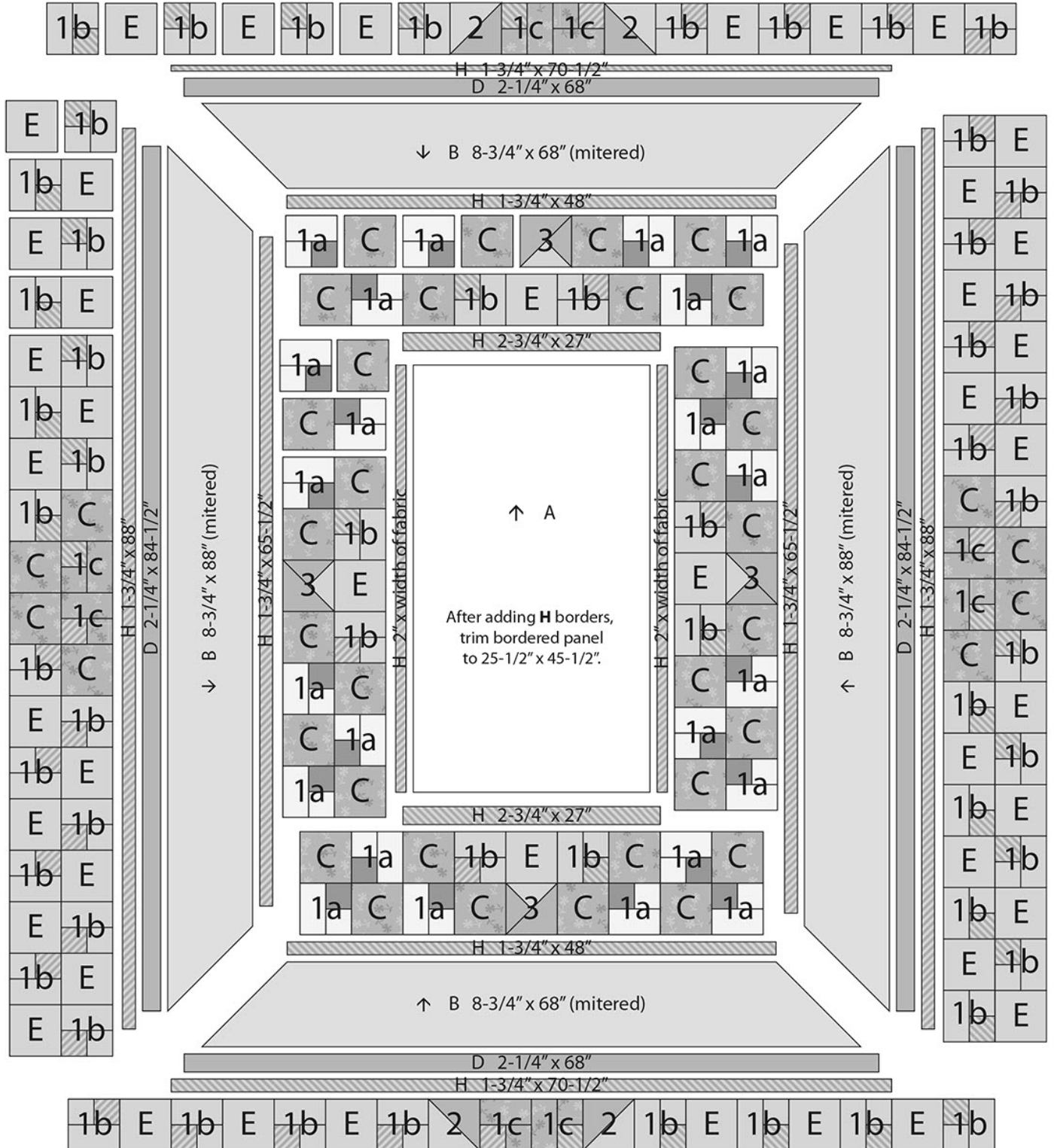
16. Layer and baste top, batting, and backing together. Quilt as desired. Attach binding (**Fabric F**) and enjoy!!

Sketchbook Garden

QUILT LAYOUT

Border measurements are the cut size.

Arrows and stripes indicate orientation of directional prints.



1409

Project Sheet - 555-606-555

Sketchbook Garden

By Lisa Audit



A 1409-86450-137
2/3 yd. (1 panel)



B 1409-86451-143
2 2/3 yds.



C 1409-86452-437
1 1/8 yds.



D 1409-86453-473
1 1/8 yds.



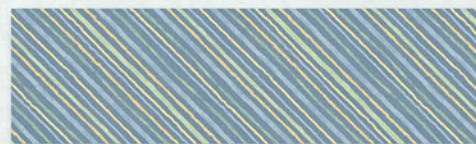
E 1409-86454-143
2 1/3 yds.



F 1409-86455-447
1 1/4 yds.
(incl. binding)



G 1409-86456-112
5/8 yd.



H 1409-86457-474
1 2/3 yds.



I 1409-86452-137
8 1/3 yds.
(backing only) OR

Customer's Choice

I 108" Option
2 7/8 yds.

