

3007

Lake Life

By Anne Rowan



Wall Hanging: 41" x 49"

Bonus Pillow: 20" x 12"



Lake Life

Please read all instructions carefully AND identify all fabrics before beginning.

All instructions include a 1/4" seam allowance and strips are cut selvage to selvage, unless stated otherwise.

1. Cut the following:

If using FAT CUTS, you may need to cut additional width-of-fabric strips.

Fabric A - PLEASE NOTE: Panels do not always print the size intended. For this pattern, the panel has a coping border added then trimmed so the panel will fit the quilt correctly.

Fussy cut 1/4" beyond outside edges of panel to approximately 23-1/2" x 32-1/2"

Fabric B - Referring to the quilt image, fussy cut strips, the length of fabric parallel to selvage: (2) 6" x 25-1/2" boat borders and (1) 12-1/2" x 20-1/2" multi-stripe border [for pillow]

Fabric C - Cut (1) 12-1/2" strip, subcut (2) 12-1/2" squares [for pillow]
Cut (2) 2-1/2" strips, subcut (2) 2-1/2" x 41-1/2" borders
Cut (5) 2" strips, sewn together end to end and cut into (4) 2" x 45-1/2" borders

Fabric D - Cut (2) 1-1/2" strips, subcut (4) 1-1/2" x 11-3/4" and (4) 1-1/2" x 5-1/2" strips

Fabric E - Cut (1) 4-1/2" strip, subcut (4) 4-1/2" x 5-1/2" pieces and (4) 1-1/4" x 3-1/2" strips

Fabric F - Cut (1) 5-1/2" strip, subcut (4) 5-1/2" squares
Cut (5) 2-1/2" strips (binding)
Cut (4) 2" strips, subcut (2) 2" x 27" strips

Fabric G - Cut (2) 5" strips, subcut (4) 5" x 11-3/4" strips. Cut remaining strip in half lengthwise into 2-1/2" strips then subcut (8) 2-1/2" x 4-1/2" strips.
Cut (1) 1-1/2" strip, subcut (2) 1-1/2" x 5-1/2" strips, (8) 1-1/2" squares, and (8) 1-1/4" x 1-1/2" pieces

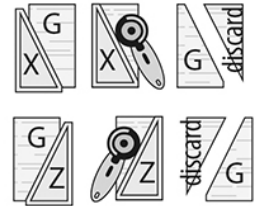
2. Piecing Order for Quilt:

1. Trim 4 **Fabric E** 4-1/2" x 5-1/2" pieces with Y Template.



Trim 4 E pieces with Y Template

2. Trim 4 **Fabric G** 2-1/2" x 4-1/2" pieces with X Template. Trim 4 **Fabric G** 2-1/2" x 4-1/2" pieces with Z Template.



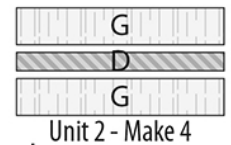
Trim 8 G pieces, 4 each with X and Z Templates

Stripes indicate orientation of directional prints.

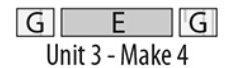
3. Sew 1 each X and Z **Fabric G** pieces to sides of a Y **Fabric E** piece as shown. Make a total of 4 Unit 1 (4-1/2" x 5-1/2" square unfinished).



4. Cut 1 **Fabric G** 5" x 11-3/4" strip in half lengthwise. Sew a **Fabric D** 1-1/2" x 11-3/4" strip between the 2 **Fabric G** 2-1/2" x 11-3/4" strips. Make a total of 4 Unit 2 (5-1/2" x 11-3/4" unfinished).



5. Stitch a **Fabric E** 1-1/4" x 3-1/2" piece between 2 **Fabric G** 1-1/4" x 1-1/2" pieces. Make a total of 4 Unit 3 (1-1/4" x 5-1/2" unfinished).

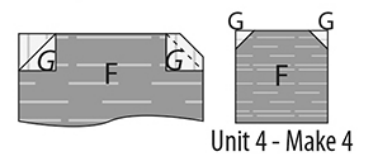


6. Draw a diagonal line across the wrong side of 4 **Fabric G** 1-1/2" squares. Draw a diagonal line in the opposite direction on another 4 **Fabric G** 1-1/2" squares.

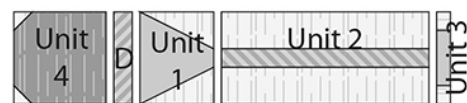


Letters in italics indicate wrong side of fabric.

7. Arrange 1 each marked **Fabric G** 1-1/2" squares on 2 corners of a **Fabric F** 5-1/2" square as shown. Stitch along marked lines. Trim seam allowances to 1/4". Press triangles out. Make a total of 4 Unit 4 (5-1/2" square unfinished).



8. Arrange 1 each **Fabric D** 1-1/2" x 5-1/2" strip and 1 each Units 1-4 in a row as shown. Stitch together. Make a total of 4 Oar Blocks (5-1/2" x 22-1/2" unfinished).



Oar Block - Make 4

Lake Life

9. Refer to Quilt Layout (Page 3) for arrangement and placement of blocks, strips, panel, and borders.

10. Stitch **Fabric F** 2" x width of fabric strips to sides of the **Fabric A** panel. Trim strip ends even. Add 2" x 27" **Fabric F** strips to top and bottom of panel. *Trim bordered panel to 25-1/2" x 34-1/2" (unfinished).*

11. Sew a **Fabric B** 6" x 25-1/2" border above and below bordered panel.

12. Stitch **Fabric C** 2" x 45" borders to right and left sides of bordered panel.

13. Arrange 2 Oar Blocks and a **Fabric G** 1-1/2" x 5-1/2" strip in vertical rows on right and left sides of quilt. Sew into vertical borders (5-1/2" x 45-1/2" unfinished) then sew to right and left sides of quilt.

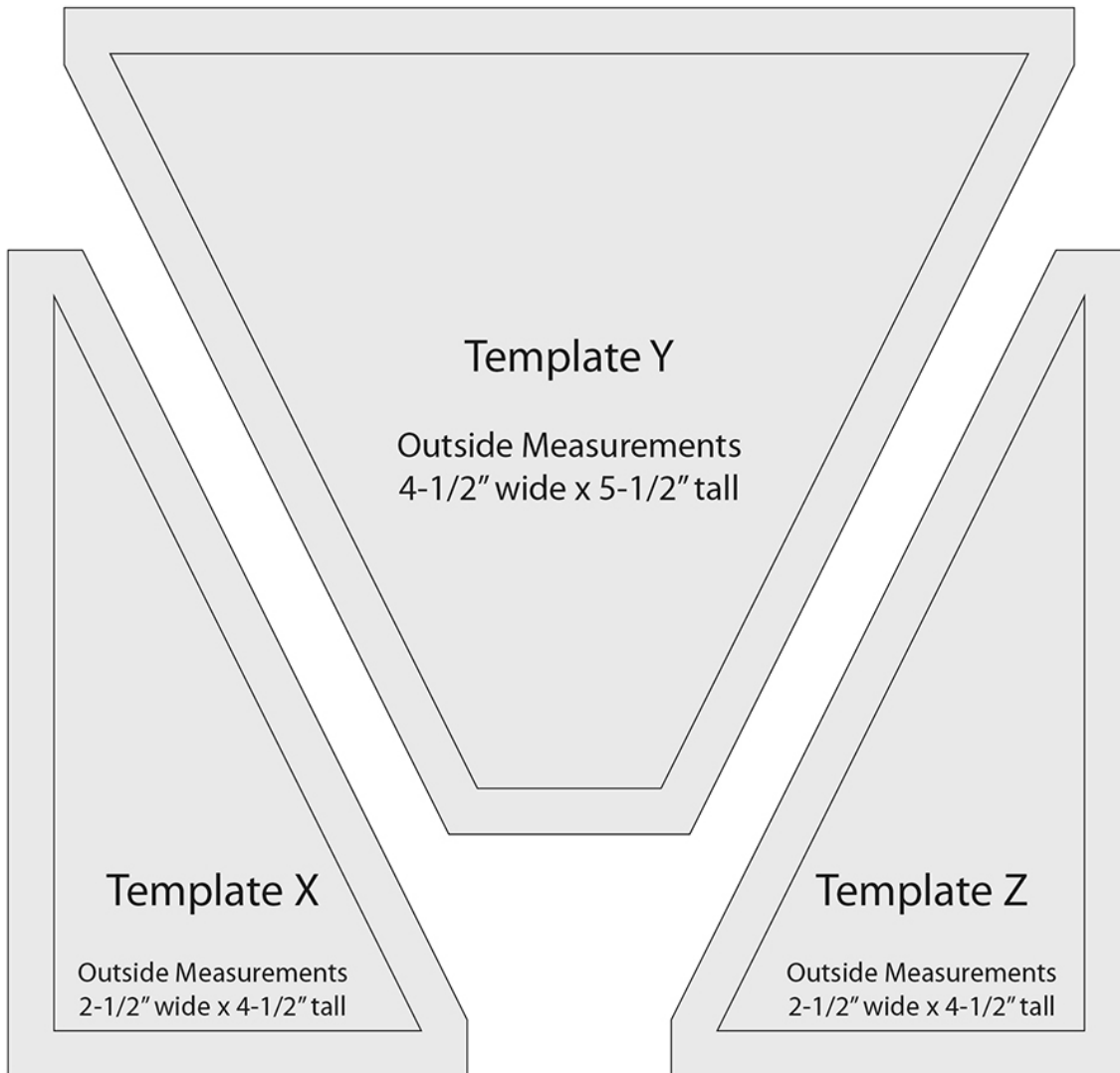
14. Stitch **Fabric C** 2" x 45-1/2" borders to right and left sides of quilt. Add **Fabric C** 2-1/2" x 41-1/2" borders to top and bottom of quilt.

15. The quilt measures approximately 41-1/2" x 49-1/2" (unfinished). Make backing (**Fabric H**) approximately 8" larger than the top.

16. Layer and baste top, batting, and backing together. Quilt as desired. Attach binding (**Fabric F**) and enjoy!!

1"

*Please check size since printers may vary.
Enlarge or reduce on a copier as needed.*

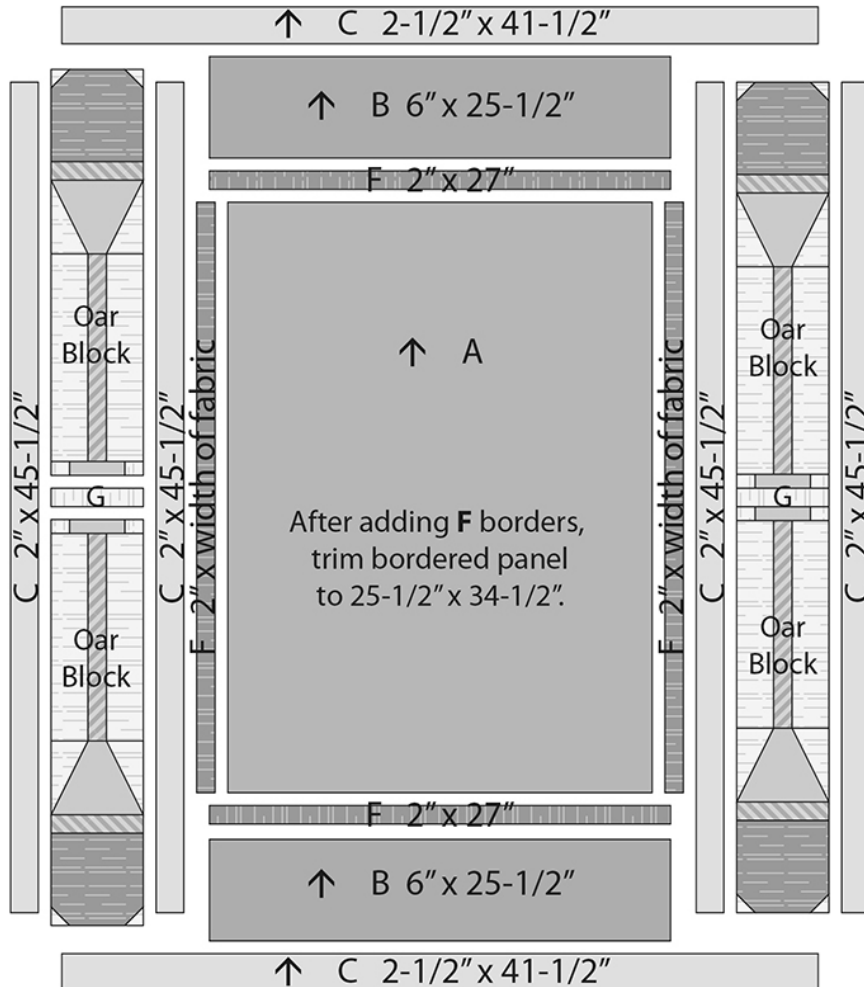


Lake Life

QUILT LAYOUT

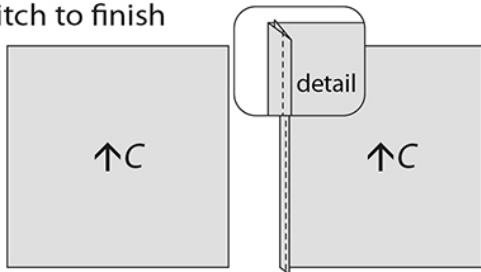
Border measurements are the cut size.

Arrows and stripes indicate orientation of directional prints.

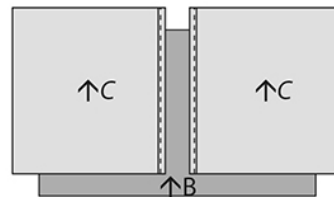


3. Piecing Order for Pillow:

1. Arrange **Fabric C** 12-1/2" squares, right side down, side by side as shown. On inside edges, fold to wrong side 1/2" then 1/2" again. Press flat. Topstitch to finish backing pieces.



2. Place **Fabric B** 12-1/2" x 20-1/2" piece right side up on a flat surface. Arrange the **Fabric C** backing pieces right side down, with the raw edges even, and the hemmed edges overlapping.



3. Sew around all edges with 1/4" seam. Sew around edges with an overcast stitch to reduce fraying. Turn pillow right side out. Insert 12" x 20" pillow form and enjoy!!



3007

Project Sheet - 555-596-555

Lake Life

By Anne Rowan



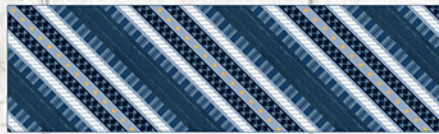
A 3007-68499-458
2/3 yd. (1 panel)



B 3007-68500-457
7/8 yd.



C 3007-68501-934
1 yd.



D 3007-68503-414
1/8 yd.
(or Fat Eighth)



E 3007-68504-410
1/4 yd.
(or Fat Quarter)



F 3007-68506-494
1 yd.
(Incl. binding)



G 3007-68506-990
1/2 yd.



H 3007-68502-937
2 7/8 yds.
(Backing only)

