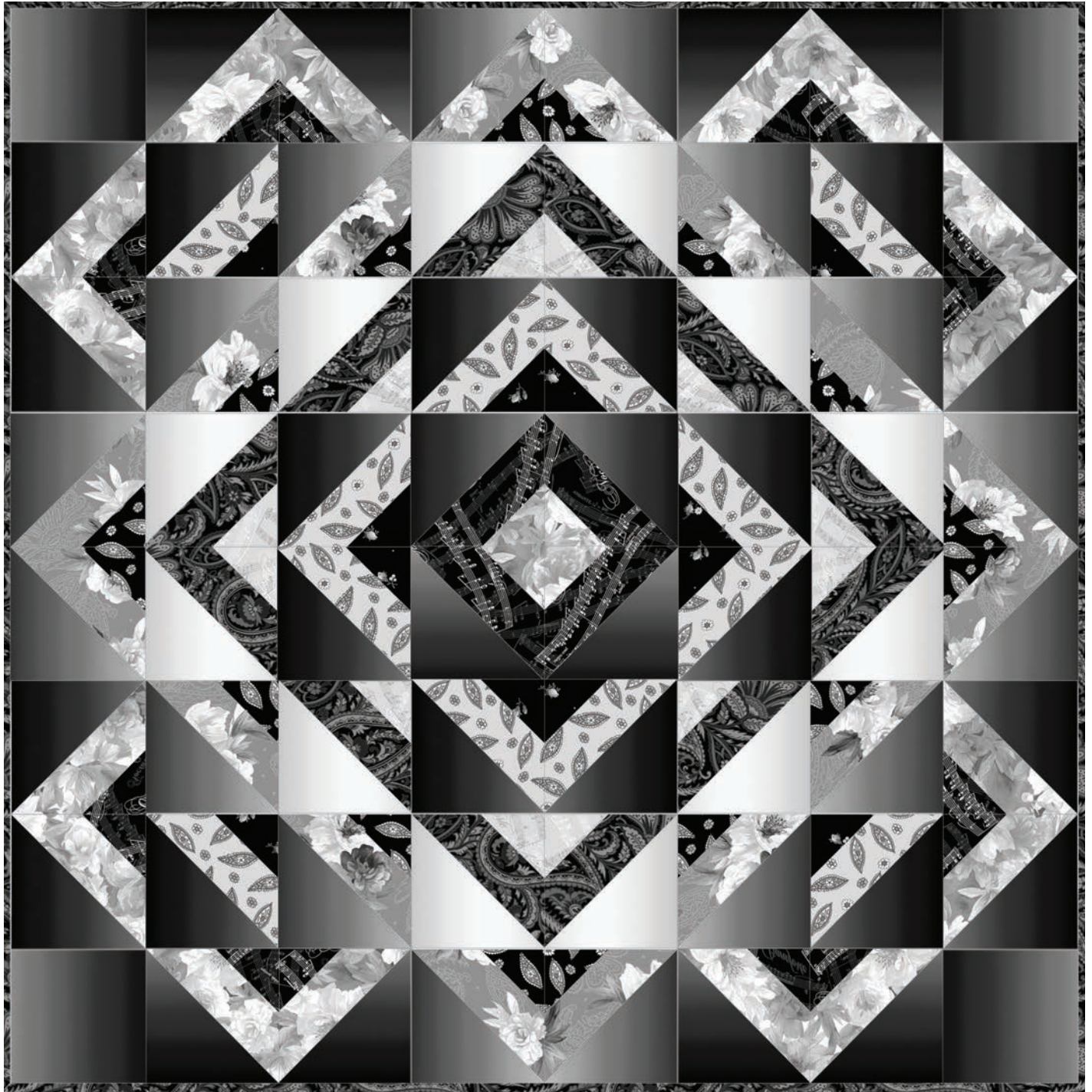


MAYWOOD  STUDIO

Nocturne



Nocturne Collection by Maywood Studio featuring Sorbet Ombré
64" x 64" finished quilt

Intermediate



MAYWOOD STUDIO



Working with ombré fabrics

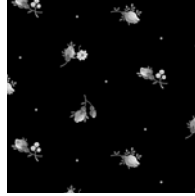
Maywood Studio ombré fabrics are designed to reverse repeat from dark to light to dark again from selvage to selvage. Your finished quilt may look slightly different than this one.



Fabric 1
MAS9612-JW



Fabric 2
MAS9617-J



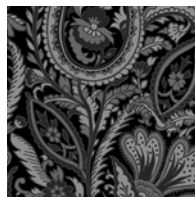
Fabric 3
MAS9615-J



Fabric 4
MAS9616-K



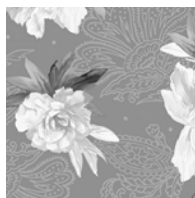
Fabric 5
MAS9617-K



Fabric 6
MAS9614-J



Fabric 7
MAS9616-J



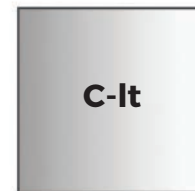
Fabric 8
MAS9613-K2

Ombré Cutting Guide"

Follow this cutting guide for the (Fabric 9) C Squares.
Subcut the (Fabric 9) D Squares from the C-md squares



Use 3 strips: cut C-lt from the lightest area near the center
C-dk from the darkest area near the selvage.



Cut 6



Cut 4



Use 6 strips: cut C-dk from the darkest sections near the selvages.
Cut C-md from the dark/medium sections, avoiding the lightest areas.



Cut 12



Cut 12



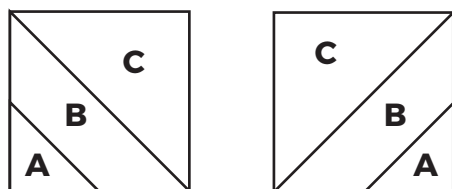
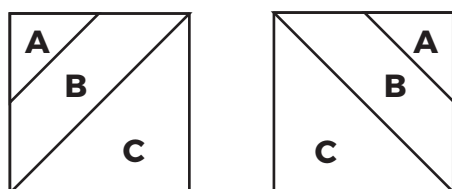
Finished Size 64" x 64"

Fabric Requirements

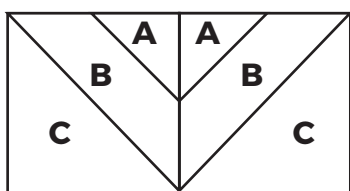
Fabric 1	MAS9612-JW	3/4 yd
Fabric 2	MAS9617-J	5/8 yd
Fabric 3	MAS9615-J	1/2 yd
Fabric 4	MAS9616-K	5/8 yd
Fabric 5	MAS9617-K	1/3 yd
Fabric 6	MAS9614-J	1-1/8 yd
Fabric 7	MAS9616-J	1/3 yd
Fabric 8	MAS9613-K2	5/8 yd
Fabric 9	MASD634-J	2-1/2 yds
Binding	included in Fabric 6	
Backing	your choice	4 yds

WOF - Width of Fabric
LOF - Length of Fabric
RST - Right Sides Together

This pattern uses a single block and block sets.
Fabrics and pieces are indicated by letter and number.
For example 'A1' is Piece A from Fabric 1.
Refer to the Ombré Cutting Guide for 'C' pieces.



Block Set



Maywood Studio makes every effort to make sure our patterns are accurate. Please visit maywoodstudio.com and check for project updates.

Cutting

Fabric 1

A1: Cut 1 strip 5" x WOF
subcut (4) 5" A-1 squares
B1: Cut 2 strips 9-5/8" x WOF
subcut (8) 9-5/8" B-1 squares

Fabric 2

A2: Cut (2) 5" x WOF strip
subcut (16) 5" squares
B2: Cut (1) 9-5/8" x WOF strip
subcut into (4) 9-5/8" squares

Fabric 3

A3: Cut (2) 5" x WOF strips
subcut (12) 5" squares

Fabric 4

B4: Cut 2 strips 9-5/8" x WOF
subcut (6) 9-5/8" squares

Fabric 5

A5: Cut 2 strips 5" x WOF
subcut (12) 5" squares

Fabric 6

B6: Cut 2 strips 9-5/8" x WOF
subcut (6) 9-5/8" squares
Binding: (7) 2-1/2" x WOF Strips

Fabric 7

A7: Cut 2 strips 5" x WOF
subcut (16) 5" Squares

Fabric 8

B8: Cut 2 strips 9-5/8" x WOF
subcut (8) 9-5/8" squares

Fabric 9 *Follow Ombré Cutting Guide
(9) 9-5/8" x WOF strips subcut into
C-lt: (6) 9-5/8" squares
C-md: (12) 9-5/8" squares
*D: subcut (4) C-dk into 8-1/2" squares
C-dk: (16) 9-5/8" squares

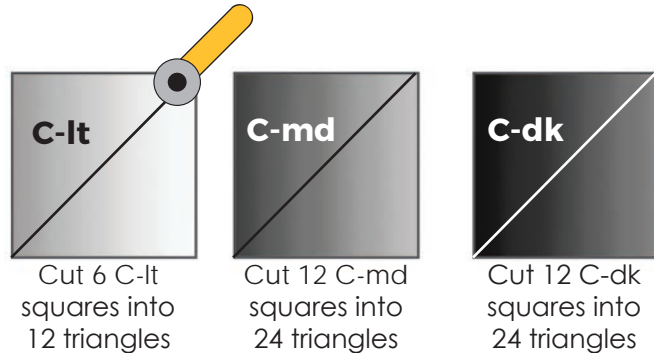
Backing: Cut into (2) 2 yard pieces

Nocturne Quilt by Maywood Studio

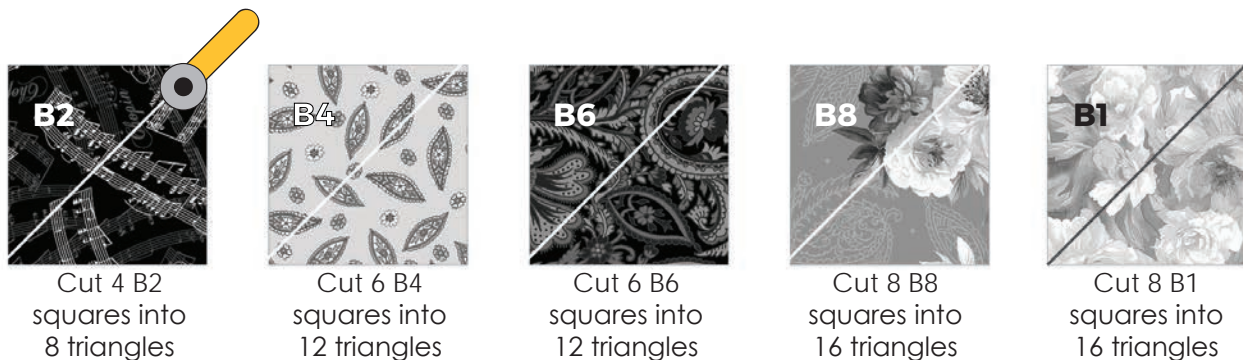
Please read all instructions before you begin. Seam allowance is 1/4" unless otherwise stated. Use a light sizing/starch on the squares before cutting triangles to help control stretching along the bias edges.

Block Assembly

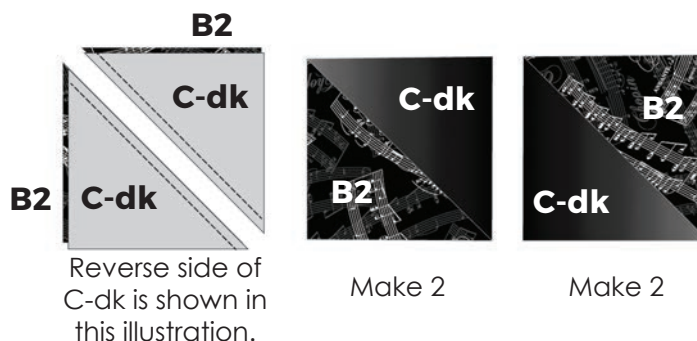
1. Cut the following RST in pairs to make left and right sides of the sets. Separate the (Fabric 9) C squares into 3 piles: C-lt (light), C-md (medium), C-dk (dark). Reserve (4) C-dk squares to subcut into the D squares. Mark a diagonal line from corner to corner on the wrong side of each (Fabric 9) C squares. Cut in half along the marked diagonal line. Keep together in pairs in the original light, medium, and dark groups.



2. Draw a diagonal line on each of the B squares. Cut in half along the marked line. Keep together in pairs.

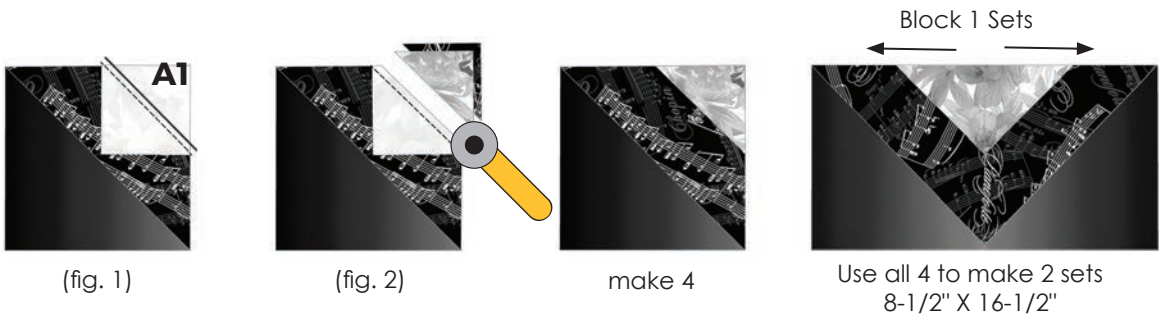


3. Sew the ombre and print triangles together. It is helpful to use a walking foot when sewing bias seams. Place a C-dk triangle RST over B2 triangle. Sew together with 1/4" seam allowance. Press open. Make 4 total. Trim to 8-1/2" x 8-1/2".

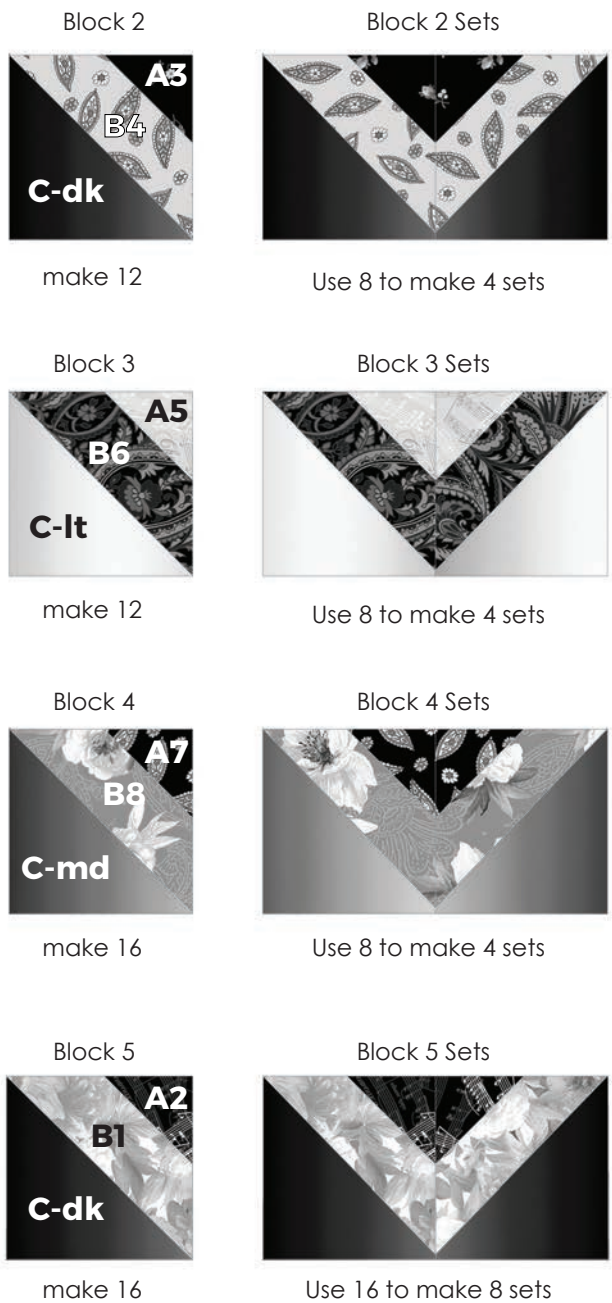


4. Mark a diagonal line from corner to corner on the wrong side of the A1 squares. Place one A1 square, RST, over a Step 3 block. Sew on the marked line. (fig 1) Trim 1/4" away from the marked line. (fig 2). Press open.

5. Place 2 Step 4 units RST. Sew together to form a set. Press open. Make 2



6. Sew blocks and block sets for blocks 2, 3, 4, and 5. Follow steps 3-4 for the blocks and step 5 to make the block sets.



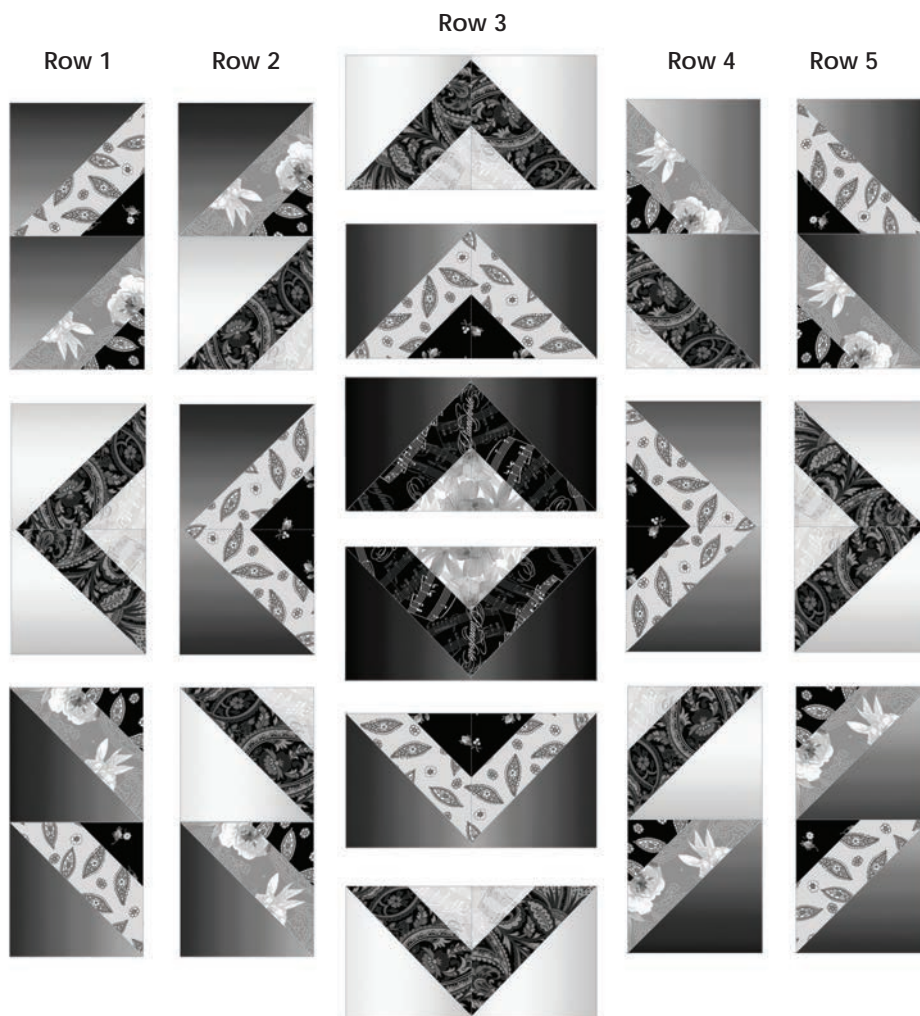
Top Assembly

7. Sew the center section of the quilt top. Lay out the blocks and block sets as illustrated below. Sew into rows. Press rows in opposite directions. Sew row to row. Press open.

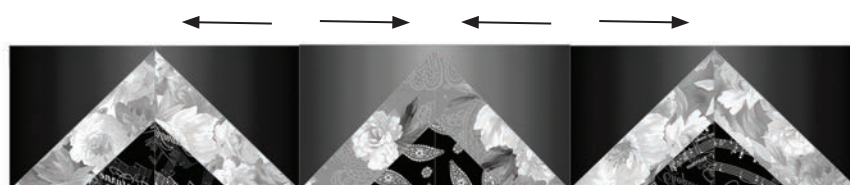
Row 1 & 5: Block 2 - Block 4 - Block 3 set - Block 4 - Block 2

Row 2 & 4: Block 4 - Block 3 - Block 2 set - Block 3 - Block 4

Row 3: Block 3 set - Block 2 set - Block 1 set - Block 1 set - Block 2 set - Block 3 set

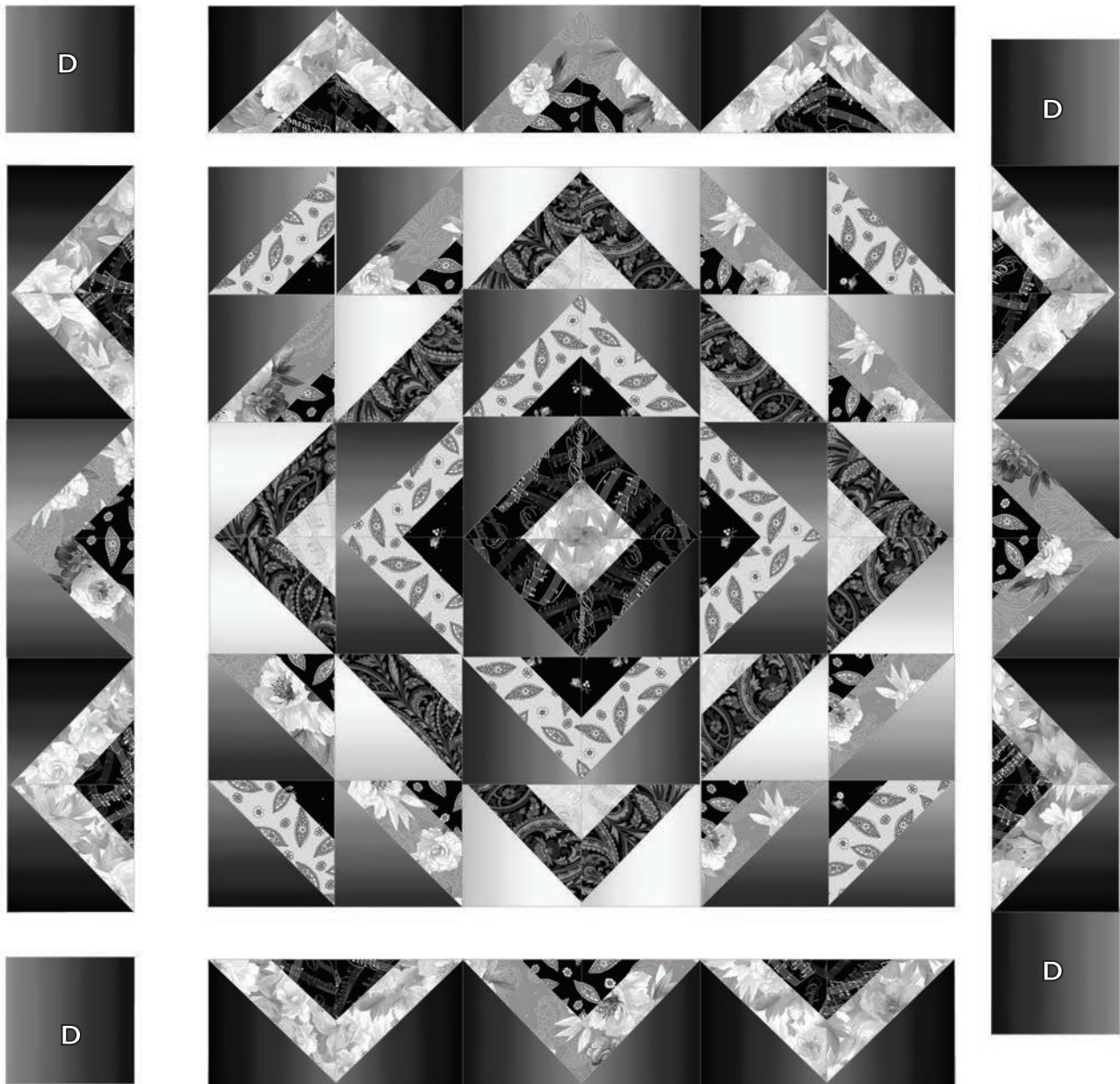


8. Sew the outside rows: Block 5 set - Block 4 set - Block 5 set. Press open. Make 4.



9. Sew a Step 8 row to the top and bottom of the Step 7 quilt top. Press open.

10. Sew the (fabric 9) D squares to either side of the remaining two Step 8 rows. Press open. Then sew the rows to the sides on to finish the quilt top. Press open.



11. Layer the backing (wrong side up), batting and quilt top (right side up). Baste layers to secure. Quilt as desired.

12. Sew the binding strips together into one continuous strip. Press in half length-wise. Sew the binding to the quilt top with a 3/8" seam allowance, mitering the corners. Trim the excess backing and batting, then turn the binding to the back side of the quilt and stitch down by hand with matching thread.

Quilt Top Diagram

