

OCEAN TIDES

Designed by Elise Lea for RK
www.robertkaufman.com

Featuring ARTISAN
BATIKS

Coral Reef 



Finished quilt measures: 74" x 84"





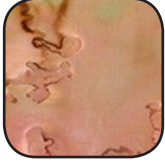



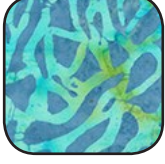
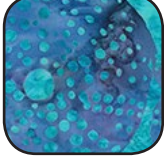

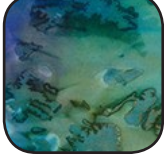


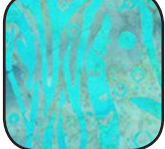

Difficulty Rating: **Intermediate**

ROBERTKAUFMAN
F A B R I C S

For questions about this pattern, please email Patterns@RobertKaufman.com.

Fabric and Supplies Needed

Fabric amounts based on yardage that is 42" wide.

Color	Fabric	Name/SKU	Yardage	Color	Fabric	Name/SKU	Yardage
	A	SRK-19071-11 ROYAL	2-1/2 yards		I	SRK-19072-7 GREEN	1/2 yard
	B	SRK-18729-195 BRIGHT	1/2 yard		J	SRK-18727-213 TEAL	1/2 yard
	C	SRK-19072-330 GINGER	2/3 yard		K	SRK-18732-213 TEAL	1/2 yard
	D	SRK-18731-50 LIME	5/8 yard		L	SRK-19073-248 MARINE	1/2 yard
	E	SRK-18729-70 AQUA	5/8 yard		M	SRK-18728-425 AQUAMARINE	1/2 yard
	F	SRK-18729-69 MIDNIGHT	2/3 yard		N	SRK-19071-59 OCEAN	1/2 yard
	G	SRK-18730-264 SPA	5/8 yard		O	SRK-19071-6 PURPLE	1/2 yard
	H	SRK-18731-361 CAPRI	5/8 yard		Binding*	SRK-18729-69 MIDNIGHT <i>*Also used for Fabric F</i>	2/3 yard

Copyright 2019, Robert Kaufman
For individual use only - Not for resale

You will also need:
5-1/8 yards for backing

Notes Before You Begin

- Read through all of the instructions before beginning.
- All of the seam allowances are 1/4" unless otherwise noted.
- Press seam allowances open unless otherwise noted.
- Width of fabric (WOF) is equal to at least 42" wide.
- Right sides together has been abbreviated to RST.
- Remember to measure twice and cut once!

Cutting Instructions

From Fabric A, cut:

one 8-1/2" x WOF strip. Subcut:

four 8-1/2" squares

two 7-1/2" x WOF strips. Subcut:

two 7-1/2" x 40-1/2" strips

two 5" x WOF strips. Subcut:

twelve 5" squares for the HSTs

eight 4-1/2" x WOF strips. Subcut:

fourteen 4-1/2" x 8-1/2" rectangles

forty 4-1/2" squares

seven 2-1/2" x WOF strips. Subcut:

two 2-1/2" x 20-1/2" strips

Sew the six remaining strips together, end-to-end, then trim:

two 2-1/2" x 74-1/2" strips for the top/bottom outer border

two 2-1/2" x 80-1/2" strips for the side outer border

four 2-1/2" x 60-1/2" strips

From Fabric B, cut:

one 8-1/2" x WOF strip. Subcut:

one 8-1/2" square for the quilt center

six 4-1/2" x 8-1/2" rectangles

two 4-1/2" x WOF strips. Subcut:

twelve 4-1/2" squares

From Fabric C, cut:

five 4-1/2" x WOF strips. Subcut:

ten 4-1/2" x 8-1/2" rectangles

twenty 4-1/2" squares

From Fabric D, cut:

four 4-1/2" x WOF strips. Subcut:

six 4-1/2" x 8-1/2" rectangles

sixteen 4-1/2" squares

From Fabric E, cut:

one 5" x WOF strip. Subcut:
four 5" squares for the HSTs
three 4-1/2" x WOF strips. Subcut:
six 4-1/2" x 8-1/2" rectangles
twelve 4-1/2" squares

From Fabric F, cut:

five 4-1/2" x WOF strips. Subcut:
ten 4-1/2" x 8-1/2" rectangles
twenty 4-1/2" squares

From Fabric G, cut:

four 4-1/2" x WOF strips. Subcut:
six 4-1/2" x 8-1/2" rectangles
twenty 4-1/2" squares

From Fabric H, cut:

one 5" x WOF strip. Subcut:
eight 5" squares for the HSTs
three 4-1/2" x WOF strips. Subcut:
six 4-1/2" x 8-1/2" rectangles
twelve 4-1/2" squares

From each of Fabrics I-O, cut:

three 4-1/2" x WOF strips. Subcut:
six 4-1/2" x 8-1/2" rectangles
twelve 4-1/2" squares

From the Binding Fabric, cut:

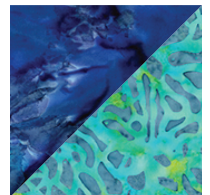
nine 2-1/2" x WOF strips

Assemble the Half-Square Triangles

Step 1: Pair a 5" Fabric A square with a 5" Fabric H square, RST. Mark a diagonal line on the wrong side of one square. Sew 1/4" away from both sides of the marked line. Cut on the marked line, creating two half-square triangles (HSTs). Press toward the darker fabric. Trim to 4-1/2" square. Repeat to make sixteen A/H HSTs.

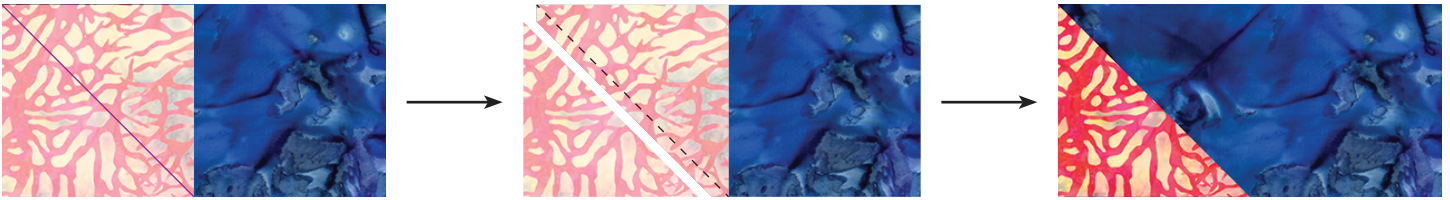


Step 2: Repeat Step 1 to make eight A/E HSTs.

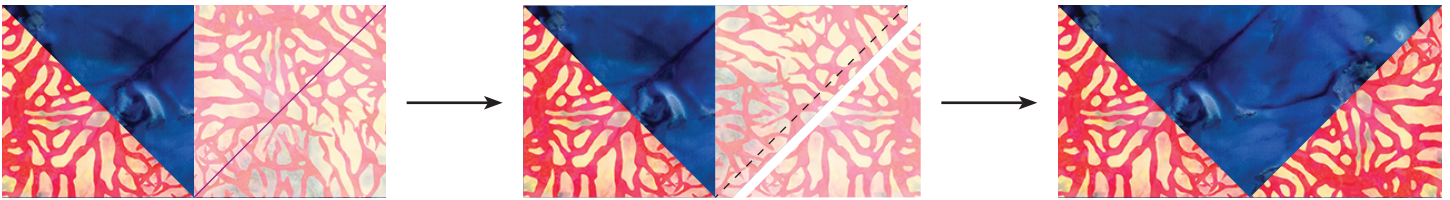


Assemble the Flying Geese

Step 3: Place a 4-1/2" Fabric B square RST at one end of a Fabric A rectangle. Mark a diagonal line on the wrong side of the square, as shown. Sew on the marked line and trim away the excess fabric, leaving a 1/4" seam allowance. Press toward the triangle.

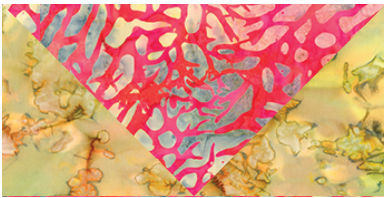


Step 4: Repeat Step 1 at the remaining end of the rectangle. The resulting flying geese block should measure 4-1/2" x 1-1/2".



Repeat to make six A/B flying geese

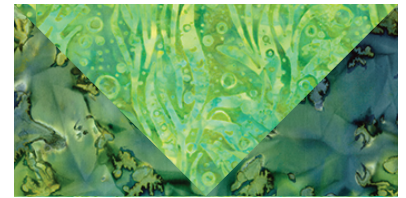
Step 5: Repeat Steps 3 and 4 to make:



six B/C flying geese



six C/D flying geese



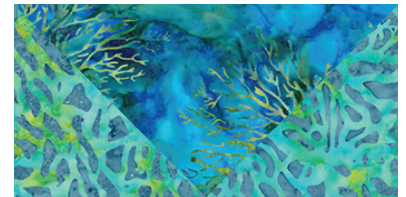
six D/I flying geese



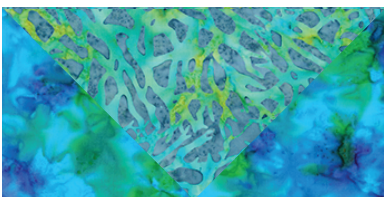
six I/J flying geese



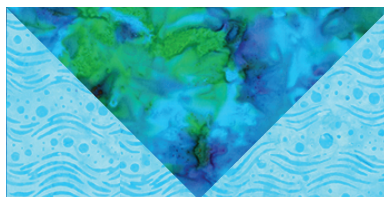
six J/K flying geese



six K/E flying geese



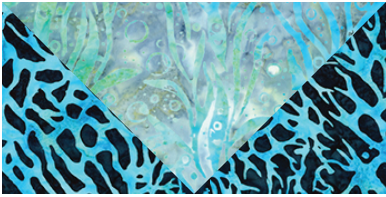
six E/L flying geese



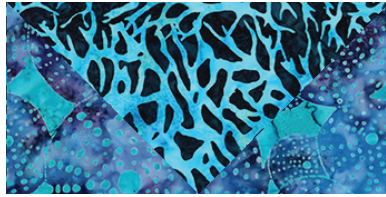
six L/G flying geese



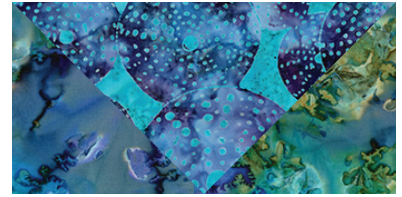
six G/H flying geese



six H/F flying geese



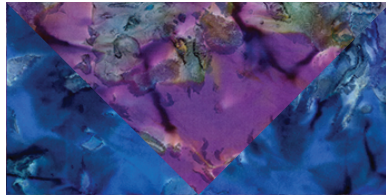
six F/M flying geese



six M/N flying geese



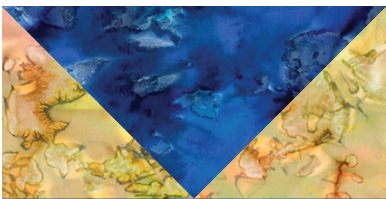
six N/O flying geese



six O/A flying geese



four C/A flying geese



four A/C flying geese



four F/A flying geese



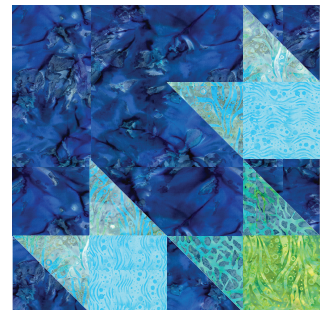
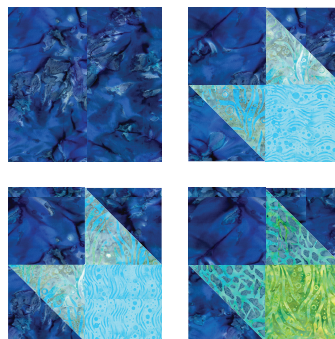
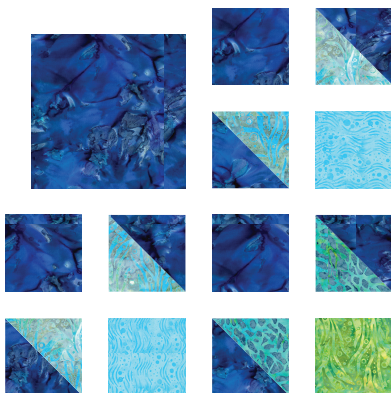
four A/F flying geese

Assemble the Quilt Center

Step 6: Gather:

- three 4-1/2" Fabric A squares
- one 4-1/2" Fabric D square
- two 4-1/2" Fabric G squares
- four A/H HSTs
- two A/E HSTs
- one 8-1/2" Fabric A square

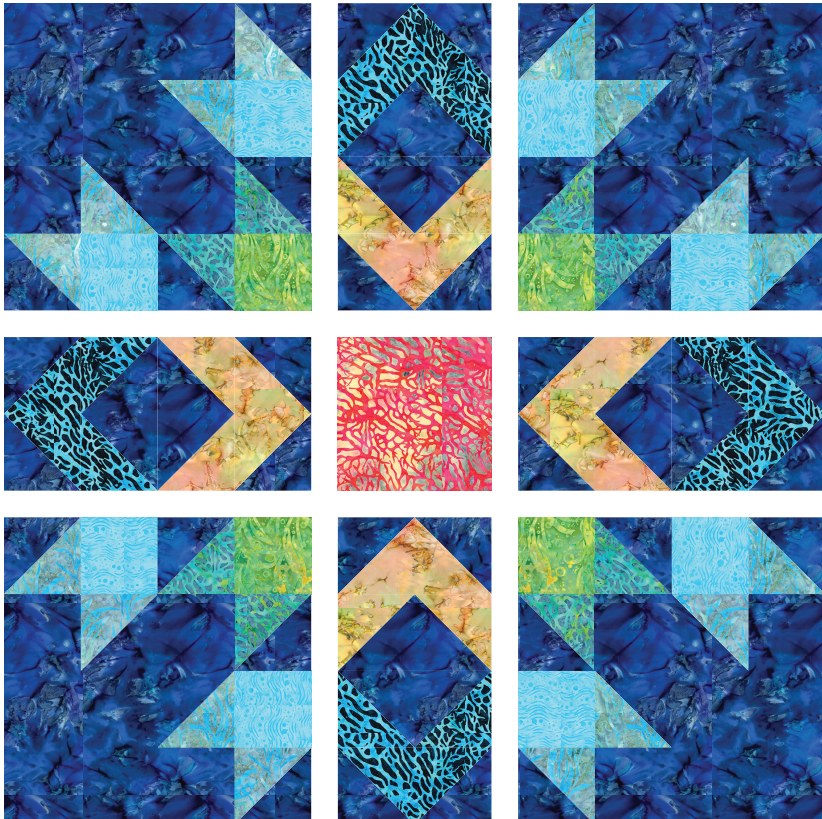
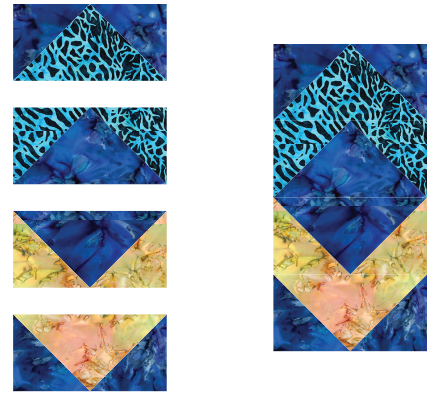
Arrange as shown, ensuring that the HSTs are oriented correctly. Sew the 4-1/2" units together to make three four-patch units, as shown. Press. Sew the three four-patch units and the 8-1/2" Fabric A square together in two rows of two. Press. Repeat to make four units like this.



Step 7: Gather:

- one C/A flying geese
- one A/C flying geese
- one F/A flying geese
- one A/F flying geese

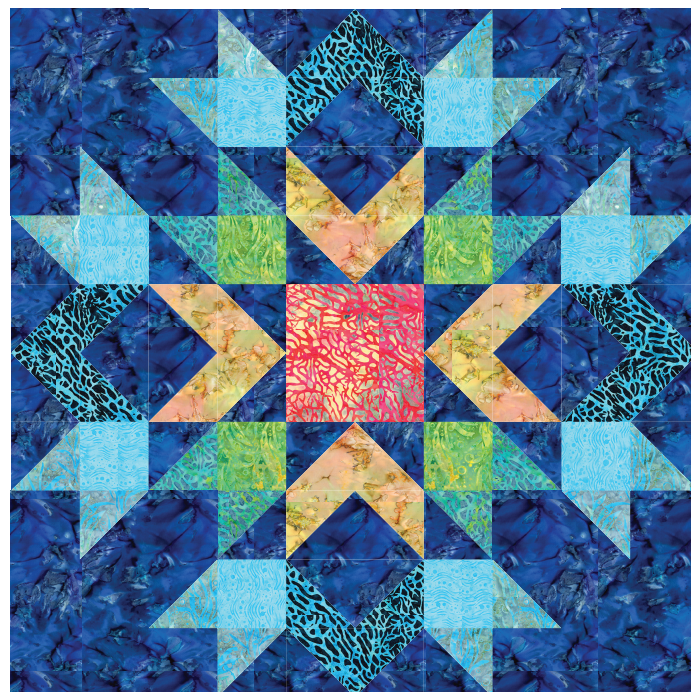
Arrange as shown, ensuring that the flying geese are oriented correctly. Sew together along the 8-1/2" edges and press. Repeat to make four units like this.



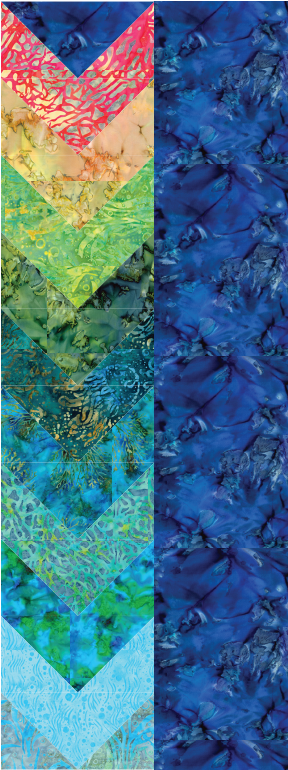
Step 8: Gather:

- four completed Step 6 units
- four completed Step 7 units
- the 8-1/2" Fabric B square

Arrange as shown, in three rows of three, ensuring that the units are oriented correctly. Sew the units together to form rows, pressing the seams toward the Step 7 units. Sew the rows together, nesting the seams and pressing them to one side. The final Quilt Center should measure 40-1/2" square.



Assemble the Border Sections

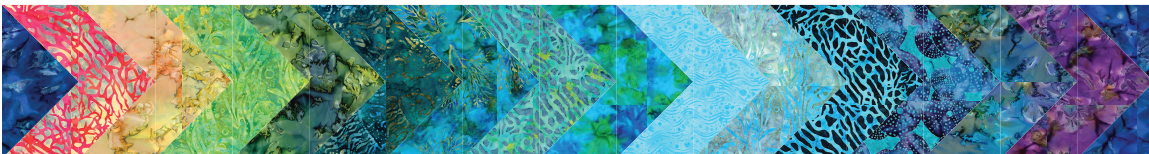


Step 9: Gather ten flying geese in the fabric combinations shown here. Sew together to form a column. Press the seams in one direction. With the flying geese units pointing down, sew a 7-1/2" x 40-1/2" Fabric A strip to the right edge of the unit and press. Sew this section to the left edge of the Quilt Center.

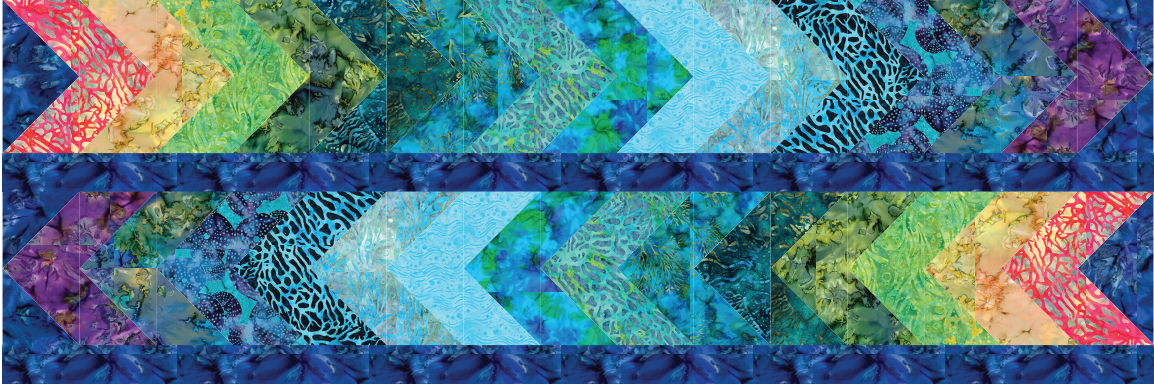
Step 10: Gather ten flying geese in the fabric combinations shown here. Sew together to form a column. Press the seams in one direction. With the flying geese units pointing down, sew a 7-1/2" x 40-1/2" Fabric A strip to the left edge of the unit and press. Sew this section to the right edge of the Quilt Center.



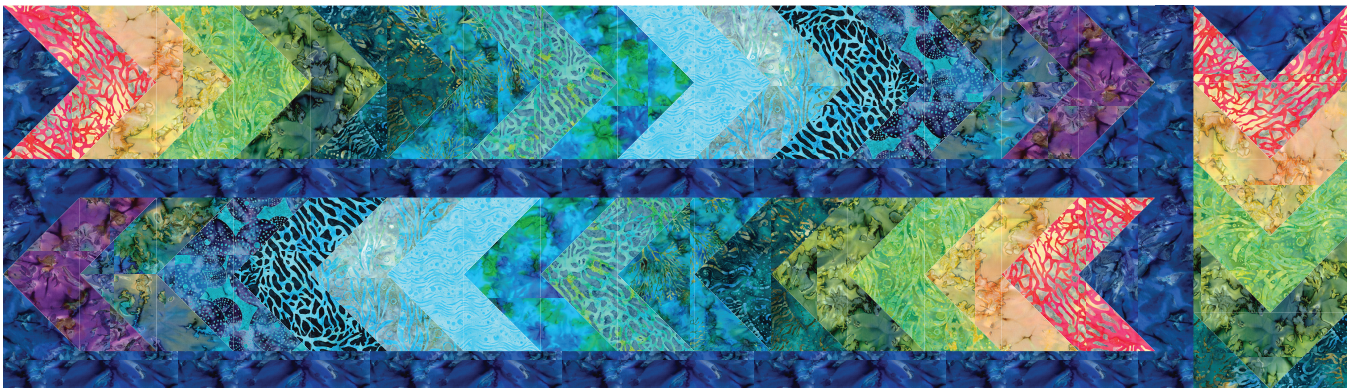
Step 11: Gather fifteen flying geese in the fabric combinations shown here. Sew together to form a row. Press the seams in one direction. Repeat to make a four rows like this.



Step 12: Gather two completed Step 11 rows and two 2-1/2" x 60-1/2" Fabric A strips. Sew together as shown, noting the orientation of the flying geese rows.



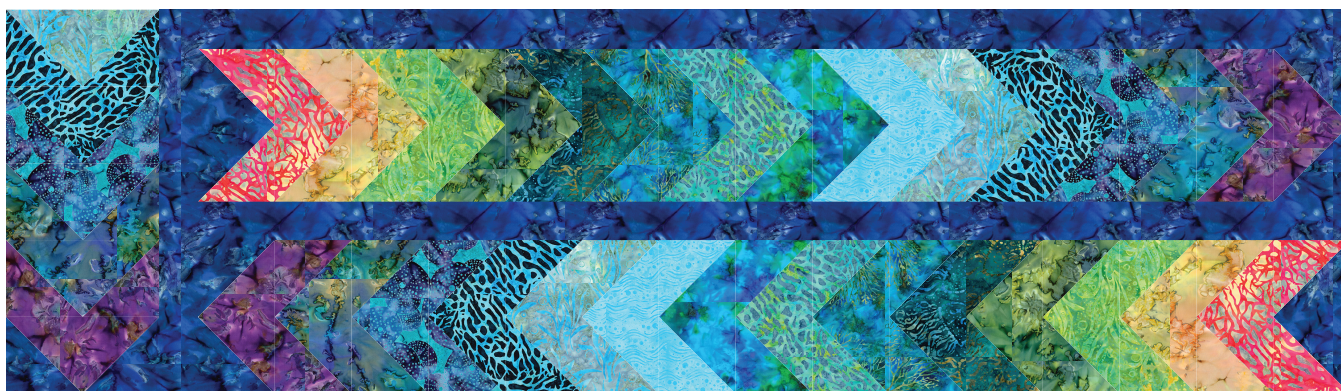
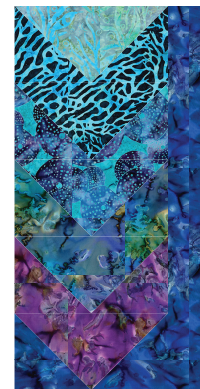
Step 13: Gather five flying geese in the fabric combinations shown here. Sew together to form a column. Press the seams in one direction. With the flying geese units pointing down, sew a 2-1/2" x 20-1/2" Fabric A strip to the left edge of the unit and press. Sew this section to the right edge of the completed Step 12 unit.



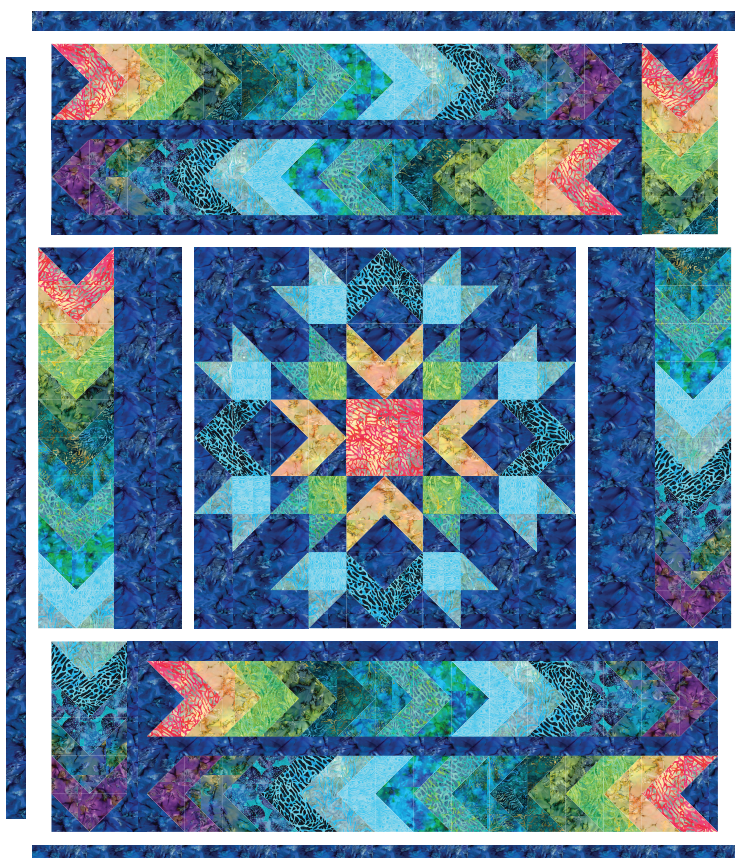
Step 14: Gather the two remaining completed Step 11 rows and two 2-1/2" x 60-1/2" Fabric A strips. Sew together as shown, noting the orientation of the flying geese rows.



Step 15: Gather five flying geese in the fabric combinations shown here. Sew together to form a column. Press the seams in one direction. With the flying geese units pointing down, sew a 2-1/2" x 20-1/2" Fabric A strip to the right edge of the unit and press. Sew this section to the left edge of the completed Step 14 unit.



Assemble the Quilt



Step 16: Sew the completed Step 13 unit to the top of the Quilt Center unit. Press. Sew the completed Step 15 unit to the bottom of the Quilt Center unit. Press.

Step 17: Sew the side outer borders to the sides of the quilt center. Press toward the borders. Sew the top and bottom outer borders to the quilt center. Press toward the borders.

Your quilt top is complete! Baste, quilt, bind and enjoy!

This pattern may be used for personal purposes only and may not be reproduced in any form without the express permission from Robert Kaufman Fabrics. This pattern is not for resale. All patterns, unless otherwise attributed, are © Robert Kaufman Co., Inc. 2005-2019. All rights reserved.