

3007

Floral Serenade

By Anne Rowan



Wall Quilt: 37" x 56"



www.wilmingtonprints.com

Wilmington Prints: A World of Possibilities

Floral Serenade

Please read all instructions carefully AND identify all fabrics before beginning.

All instructions include a 1/4" seam allowance and strips are cut selvage to selvage, unless stated otherwise.

1. Cut the following for Wall Quilt:

Refer to thumbnails on pattern cover for Fabrics A-E used in this design.

Fabric A - PLEASE NOTE: Panels do not always print the size intended. For this pattern, the panel has a coping border added then trimmed so the panel will fit the quilt correctly.

Fussy cut 1/4" beyond outside edges of panel to approximately 22-1/2" x 41-1/2"

Fabric B - Cut (6) 2-1/2" strips (binding)

Cut (4) 2" strips, subcut (2) 2" x 26" borders

Fabric C - Cut (1) 3" strip, subcut (1) 3" x 21" strip

Cut (8) 2-1/2" strips

Fabric D - Cut (4) 3" strips

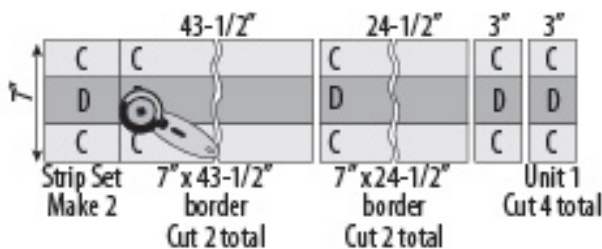
Cut (1) 2-1/2" strip, subcut (2) 2-1/2" x 21" strips

2. Piecing Order for Wall Quilt:

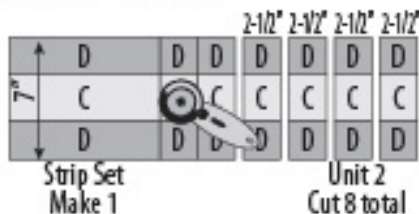
1. Stitch 2 **Fabric C** 2-1/2" x width of fabric strips together end to end. Make a total of 4.

2. Stitch 2 **Fabric D** 3" x width of fabric strips together end to end. Make a total of 2.

3. Sew a double-length **Fabric D** 3" strip between 2 **Fabric C** 2-1/2" double-length strips. Make a second strip set. Subcut each into (1) 7" x 43-1/2" border, (1) 7" x 24-1/2" border, and (2) 3" x 7" Unit 1.



4. Sew a **Fabric C** 3" x 21" strip lengthwise between 2 **Fabric D** 2-1/2" x 21" strips. Subcut into (8) 2-1/2" x 7" Unit 2.



5. Sew a Unit 1 between 2 Unit 2. Make a total of 4 blocks (7" square unfinished).



6. Refer to Quilt Layout (Page 2) for arrangement and placement of panel, borders, and blocks

7. Stitch **Fabric B** 2" x width of fabric strips to sides of the **Fabric A** panel. Trim strip ends even. Add 2" x 26" **Fabric B** strips to top and bottom of panel. *Trim bordered panel to 24-1/2" x 43-1/2" (unfinished).*

8. Stitch **Fabrics C** and **D** 7" x 43-1/2" borders to right and left sides of bordered panel. Sew blocks to short ends of **Fabrics C** and **D** 7" x 24-1/2" borders then add to top and bottom of quilt.

9. The quilt measures approximately 37-1/2" x 56-1/2" (unfinished). Make backing (**Fabric E**) approximately 8" larger than the top.

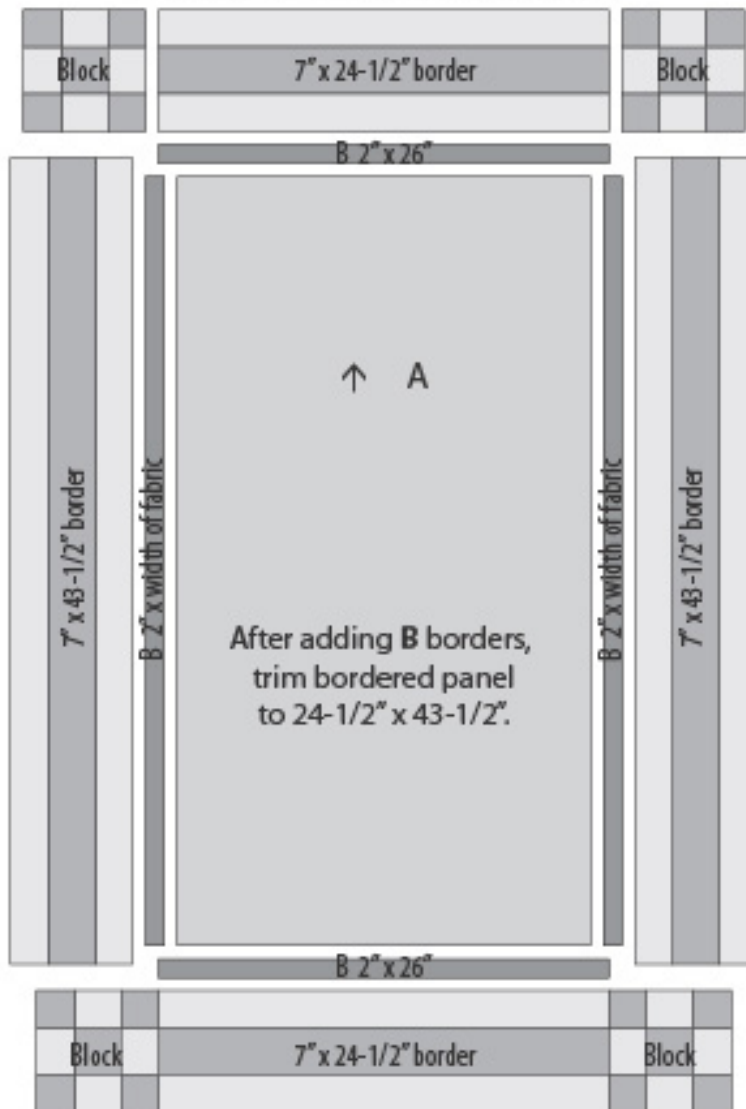
10. Layer and baste top, batting, and backing together. Quilt as desired. Attach binding (**Fabric B**) and enjoy!!

Floral Serenade

WALL QUILT LAYOUT

Border measurements are the cut size.

Arrow indicates orientation of directional print.



3007

Project Sheet - 555-582B-555

Floral Serenade

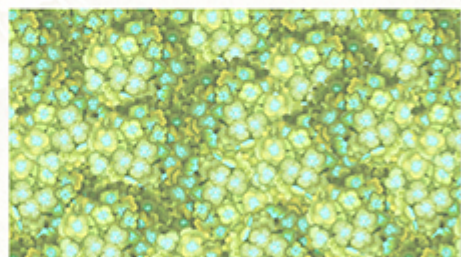
By Anne Rowan



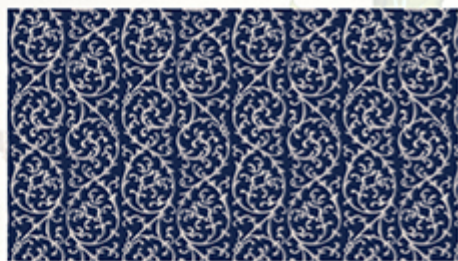
Fabric A
3007-68490-437
2/3 yd. (1 Panel)



Fabric B
3007-68453-444
7/8 yd.
(Incl. binding)



Fabric C
3007-68495-747
7/8 yd.



Fabric D
3007-68497-411
5/8 yd.



Fabric E
(44/45" Backing)
3007-68494-417
2 5/8 yds.

