

# ELDERBERRIES FLOWER FAIRIES PANEL *Quilt*

Size: Approx 41" x 60" | Design by: Marinda Stewart | Level: CONFIDENT BEGINNER



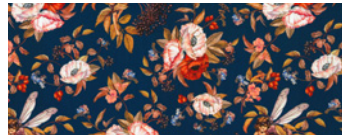




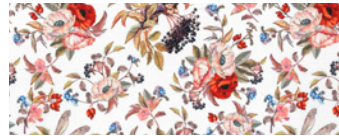
# FABRIC REQUIREMENTS



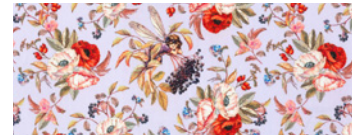
DDC8061 Multi  
Elderberry FF Panel  
2/3 yard



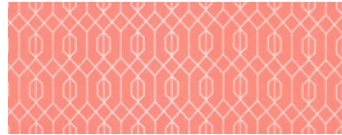
DDC8060 Navy  
Elderberry FF Tossed  
1/4 yard



DDC8060 White  
Elderberry FF Tossed  
Fat 1/4



DDC8060 Lavender  
Elderberry FF Tossed  
1 7/8 yards



DDC8063 Coral  
Elderberry Geo  
1/4 yard



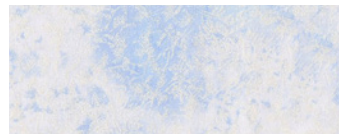
DDC8063 Lavender  
Elderberry Geo  
1/6 yard



DDC8063 Navy  
Elderberry Geo  
3/8 yard



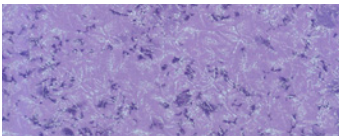
CJ2519 Blue  
Clouds  
1/6 yard



CM0376 Wedgewood  
Cotton Couture  
1/6 yard



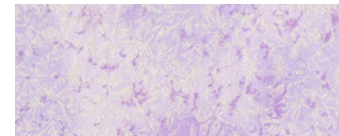
K1063 Hyacinth  
Krystal  
1/6 yard



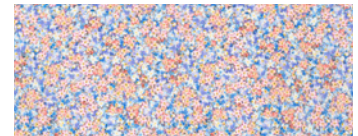
CM0376 Fancy  
Cotton Couture  
1/6 yard



K1075 Lilac  
Krystal  
1/4 yard



CM0376 Orchid  
Cotton Couture  
1/6 yard



DDC8062 Flower  
Blossom Confetti  
5/8 yard

Kit Info	12 Kits	24 Kits
DDC8061 Multi	8 yards (1) bolt	16 yards (2) bolts
DDC8060 Navy	3 yards (1) bolt	6 yards (1) bolt
DDC8060 White	3 yards (1) bolt	6 yards (1) bolt
DDC8062 Flower	7 1/2 yards (1) bolt	15 yards (1) bolt
DDC8063 Lavender	2 yards (1) bolt	4 yards (1) bolt
DDC8063 Coral	3 yards (1) bolt	6 yards (1) bolt
CJ2519 Blue	2 yards (1) bolt	4 yards (1) bolt
K1063 Hyacinth	2 yards (1) bolt	4 yards (1) bolt
K1075 Lilac	3 yards (1) bolt	6 yards (1) bolt
CM0376 Fancy	2 yards (1) bolt	4 yards (1) bolt
CM0376 Wedgewood	2 yards (1) bolt	4 yards (1) bolt
CM0376 Orchid	3 yards (1) bolt	6 yards (1) bolt
DDC8063 Navy	4 1/2 yards (1) bolt	9 yards (1) bolt
Optional Backing: DDC8060 Lavender	22 1/2 yards (2) bolts	45 yards (3) bolts

Elderberries Flower Fairies Panel  
Quilt designed by Marinda Stewart  
Size Approximately 41" x 60"  
Skill Level: Confident Beginner

Fabrics	Yardage	Cutting
DDC8061 Multi Elderberry Flower Fairies Panel	2/3 yard *	(1) 23 1/3" W x 42 1/2" H **
DDC8060 Navy Flower Fairies Tossed	1/4 yard	(2) 1 1/2" x 33 1/2" (2) 1 1/2" x 54 1/2" ***
DDC8060 White Flower Fairies Tossed	Fat 1/4	(4) 3 1/2" square (4) 5 1/2" square
DDC8062 Flower Blossom Confetti	5/8 yard	(2) 3 1/2" x 41 1/2" (2) 3 1/2" x 54 1/2" ***
DDC8063 Lavender Elderberry Geo	1/6 yard	(12) 1 1/2" x 4 1/2" (12) 1 1/2" x 5 1/2"
DDC8063 Coral Elderberry Geo	1/4 yard	(16) 3" squares
CJ2517 Blue Clouds	1/6 yard	(12) 1 1/2" x 4 1/2" (12) 1 1/2" x 5 1/2"
K1063 Hyacinth Krystal	1/6 yard	(12) 1 1/2" x 4 1/2" (12) 1 1/2" x 5 1/2"
K1075 Lilac Krystal	1/4 yard	(20) 1 1/2" x 4 1/2" (20) 1 1/2" x 5 1/2"
CM0376 Fancy Fairy Frost	1/6 yard	(12) 1 1/2" x 4 1/2" (12) 1 1/2" x 5 1/2"
CM0376 Wedgewood Fairy Frost	1/6 yard	(12) 1 1/2" x 4 1/2" (12) 1 1/2" x 5 1/2"
CM0376 Orchid Fairy Frost	1/4 yard	(4) 1 1/2" x 3 1/2" (20) 1 1/2" x 4 1/2" (16) 1 1/2" x 5 1/2"
DDC8063 Navy Elderberry Geo	3/8 yard	(5) 2 1/2" x W.O.F. - binding

Optional Backing  DDC8060 Lavender Elderberry Flower Fairies Tossed	1 7/8 yards	Backing
<b>Also Needed:</b> 45" x 65" batting, scissors, straight pins, rotary cutter, acrylic ruler, mat, and threads to match.		
* (1) complete repeat ** center on motif *** pieced for length		

Directions:

1. For the chevron border - sew on CM0376 Orchid 1 1/2" x 3 1/2" piece to one side of one DDC8060 White 3 1/2" square. Make (4). Sew one CM0376 Orchid 1 1/2" x 4 1/2" to each adjacent side. Sew one CM0376 Orchid 1 1/2" x 5 1/2" piece to the side opposite the 1 1/2" x 3 1/2" orchid strip. Repeat for all (4) pieces. Turn one square on point. Trim the block to 5 1/2" wide from side to side center the DDC8060 White 3 1/2" square as shown. Sew one K1075 1 1/2" x 4 1/2" piece to the left sides of the square. Align the new strip with the point edge of the square as shown. Follow with (1) K1075 1 1/2" x 5 1/2" piece in the same way. Repeat for the other squares. Work each row top and bottom in the following sequence:

DDC8063 Lavender, CM0376 Fancy, K1063, CJ2517, CM0376 Wedgewood.

Repeat sequence to make (2) pieces, when trimmed, measure 5 1/2" W x 23 1/2" long and (2) pieces when trimmed measure 5 1/2" W x 23 1/2" long and (2) pieces trimmed to 5 1/2" x 42 1/2" as shown. Sew one 5 1/2" x 42 1/2" strip to each side of the DDC8061 23 1/2" W x 42 1/2" panel.

2. For cornerstone blocks - with right sides together place one DDC8063 Pink 3" square on one corner of one DDC8060 White 5 1/2" square. Sew diagonally across the corner of the DDC8063 Pink square. Press open. Trim excess from the back. Repeat for each corner. Make (4) blocks total.

3. Sew one cornerstone block on each end of the 5 1/2" x 23 1/2" chevron strips. Sew one strip to top and and one to the bottom of the quilt.

4. Sew one DDC8060 Navy 1 1/2" x 33 1/2" strip to the top and bottom of the quilt. Sew one DDC8060 Navy 1 1/2" x 54 1/2" strip, pieced for length to each side of the quilt.

5. Sew one DDC8062 3 1/2" x 54 1/2" strip, pieced for length, to each side of the quilt. Sew one DDC8062 3 1/2" x 41 1/2" piece to the top and bottom.
6. Layer backing (optional DDC8060 Lavender), batting, and quilt top. Baste.
7. Quilt as desired.
8. Bind quilt using DDC8063 Navy 2 1/2" strips, pieced as needed for length.

#### Kit Info

Fabrics	(12) kits	(24) kits
DDC8061 Multi	* 8 yards (1) bolt	* 16 yards (2) bolts
DDC8060 Navy	3 yards (1) bolt	6 yards (1) bolt
DDC8060 White	3 yards (1) bolt	6 yards (1) bolt
DDC8062 Flower	7 1/2 yards (1) bolt	15 yards (1) bolt
DDC8063 Lavender	2 yards (1) bolt	4 yards (1) bolt
DDC8063 Coral	3 yards (1) bolt	6 yards (1) bolt
CJ2517 Blue	2 yards (1) bolt	4 yards (1) bolt
K1063 Hyacinth	2 yards (1) bolt	4 yards (1) bolt
K1075 Lilac	3 yards (1) bolt	6 yards (1) bolt
CM0376 Fancy	2 yards (1) bolt	4 yards (1) bolt
CM0376 Wedgewood	2 yards (1) bolt	4 yards (1) bolt
CM0376 Orchid	3 yards (1) bolt	6 yards (1) bolt
DDC8063 Navy	4 1/2 yards (1) bolt	9 yards (1) bolt
Optional Backing DDC8060 Lavender	22 1/2 yards (2) bolts	45 yards (3) bolts
* Needs to be (1) complete repeat for each kit		