

# Christmas 2019 Panel Quilt

Designed by Lynne Goldsworthy of [lilysquilts.blogspot.com](http://lilysquilts.blogspot.com)  
38" x 56" (1m x 1.4m)



Twelve Days



Festive



# Christmas 2019 Panel Quilt

Designed by Lynne Goldsworthy of [lilysquilts.blogspot.com](http://lilysquilts.blogspot.com)  
38" x 56" (1m x 1.4m)

Used For	Twelve Days	Festive	Amount
Piano Border	1948Q 2097Q 2098R 2099Q 2099R 2100R 2101-1 2103R	2088R 2120-1* 2121-1 2123G 2123S 2124G 2124R 2124W	One F8th of each
Corner Frames	2097G	2124R	One FQ
Corner Frame centres	2100Q	2117-1	One FQ
Panel	2104/1	2108-1	One panel
Background (BKG)	2097R	306-W1	60cm/24"
Binding	2103R	2124R	40cm/15"
Backing	2100R	2118-1	1.75 m / 1 ¾ yds

\*FQ needed if fussy cutting the individual Santas

Wadding - 44" x 62" (1.1m x 1.6m) 279 Cotton Mix 80-20 from <a href="http://www.vlieseline.com/en">http://www.vlieseline.com/en</a>
Threads - Aurifil 50wt for piecing and 40wt for quilting from <a href="http://www.aurifil.com">http://www.aurifil.com</a>
Templates - One circle block template
Fusible Web 18" / 45cm wide - ½ yd / ½ m Bondaweb from <a href="http://www.vlieseline.com/en">http://www.vlieseline.com/en</a>

## Notes:

- Read the pattern in full before starting
- ¼" seams are used throughout except where stated otherwise
- Press after each seam, pressing seams open or to one side as preferred
- WOF - width of fabric - a strip of fabric cut from selvedge to selvedge
- WOFQ – a strip of fabric cut from selvedge to centre cut on a FQ or F8th
- Make sure to visit <http://www.makoweruk.com/projects/> to ensure you are working from the most up-to-date version of the pattern

## Cutting the fabrics

1. Follow the main quilt image for how many 2" x 5" piano pieces are cut from each fabric:
  - For 4 pieces, cut one 2" WOFQ and cut into four 5" lengths.
  - For 8 pieces, cut two 2" WOFQ strips and cut into four 5" lengths per strip.
  - For 12 pieces, cut three 2" WOFQ strips and cut into four 5" lengths per strip.
  - For 16 pieces cut four 2" WOFQ strips and cut into four 5" lengths per strip.
2. Cut the corner frame fabric into eight 5" squares. NB: leave the corner frame centre fabric whole for now and fussy cut at step 5 below.
- 3a. For Twelve Days trim the panel to ¼" away from the edge of the cream section all round.
- 3b. For Festive trim the panel to ¾" away from the edge of the gold frames all round.
- 4a. For Twelve Days, cut the BKG fabric into:
  - two 2 ½" WOF strips and trim to 41 ½" long (side BKG strips)
  - two 1 ¾" WOF strips and trim to 26" long (top and bottom BKG strips)
  - five 2" WOF strips, sew end to end and trim to two 38" and two 53" lengths
- 4b. For Festive cut the BKG fabric into:
  - two 1 ¾" WOF strips and trim to 39 ½" long (side BKG strips)
  - two 2 ¾" WOF strips and trim to 26" long (top and bottom BKG strips)
  - five 2" WOF strips, sew end to end and trim to two 38" and two 53" lengths
5. Leave the backing whole and cut the binding fabric into five 2 ½" WOF strips.

## Making the wall hanging

1. Sash the sides of the panel with the side BKG fabric strips then the top and bottom with the top and bottom BKG fabric strips.
2. Trace the circle template onto eight squares of bondaweb and cut out around the outside square line. Fuse to the back of the corner frame 5" squares, centering so that there is a ½" gap all round (fig 1). Cut out the centre circle (fig 2).
3. Fussy cut 4" squares from the corner frame centres fabric so that the chosen motifs sit in the centre of each square. Fuse these squares to the back of the corner frame 5" squares, again centering to leave a ½" gap all round (figs 3 and 5 (back) and figs 4 and 6 (front)).
4. Sew the piano border pieces and the corner frame pieces into:
  - two side strips, each containing one corner frame piece and twenty-six piano border pieces; and
  - one top and one bottom strip, each containing three corner frame pieces and fourteen piano border pieces.

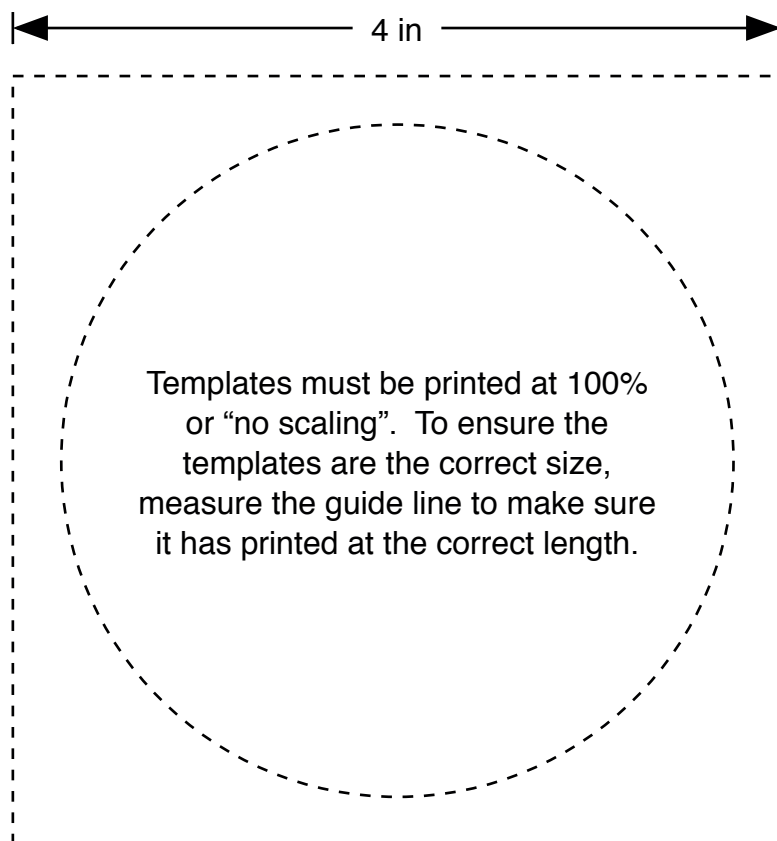


figs 1-6

5. Sew the side strips to the side then the top and bottom strips to the top and bottom of the centre section.
6. Sash the sides with the 2" x 53" then the top and bottom with the 2" x 38" BKG fabric strips.

## Finishing the wall hanging

1. Sew the binding strips end to end using diagonal or straight seams as preferred and press wrong sides together along the length to make a double fold binding.
2. Make a quilt sandwich, basting together the back, the wadding and the top.
3. Quilt as desired then trim square, removing excess wadding and backing. We quilted horizontal lines 1 ½" apart using a cream 40wt Aurifil thread on the front and back.
4. Bind, taking care to mitre the corners.







2100/Q Icons



2100/R Icons



2103/R Multi Stripe



2099/R Snowflake



2099/Q Snowflake



2099/X Snowflake



2097/G Metallic Scroll



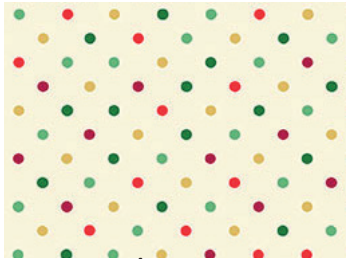
2101/1 Mini Trees



2097/Q Metallic Scroll



2097/R Metallic Scroll



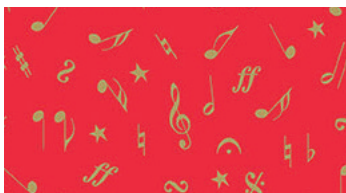
1948/Q Multi Dot



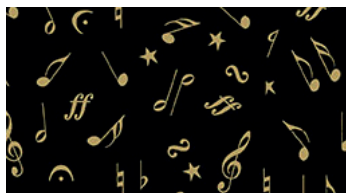
2102/Q Decorative Scroll



2098/Q Metallic Notes



2098/R Metallic Notes



2098/X Metallic Notes



2104/1 Panel Actual Size 24'' x 44'' (60 x 112 cms)



Twelve Days of Christmas Quilt by Lynne Goldsworthy

of [lilysquilts.blogspot.com](http://lilysquilts.blogspot.com)

Finished size 38'' x 56'' ( 1m x 1.4m)

Download free from [www.makoweruk.com](http://www.makoweruk.com)





2118/1 Scene



2124/W Shooting Stars



2122/1 Mini Icons



2119/1 Reindeer



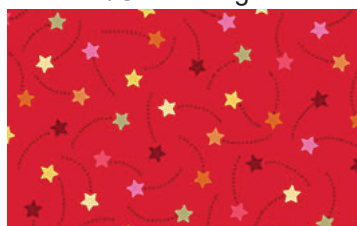
2124/G Shooting Stars



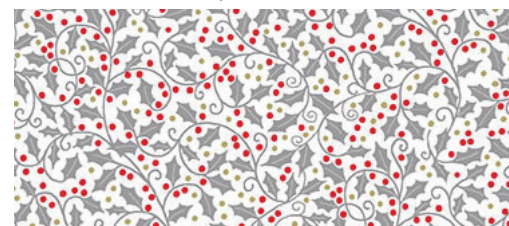
2121/1 Snowmen



2120/1 Santa



2124/R Shooting Stars



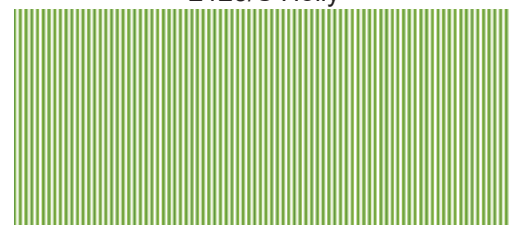
2123/S Holly



2117/1 Placement (30% of actual size)



2123/G Holly



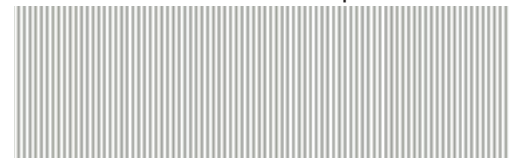
2088/G6 Pinstripe



2108/1 Panel (Each panel 24" x 44" / 60 x 112cms)



2088/R Pinstripe



2088/S3 Pinstripe



2106/1 Advent Calendar  
(Each panel 24" x 44" / 60 x 112cms)



2107/1 Large Stocking  
(Each panel 24" x 44" / 60 x 112cms)

Free project downloads

designed by Lynne Goldsworthy of [lilysquilts.blogspot.com](http://lilysquilts.blogspot.com)  
full instructions available from [www.makoweruk.com](http://www.makoweruk.com) March 2019

Images for reference only not correct for scale or colour