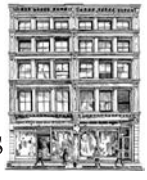


**TIMELESS  
TREASURES**



BROOME STREET PATTERNS

# Snowscape

*Winter Lights*  
Designed by Denise Russell



*Finished quilt size: 48 1/2" x 72 1/2"*

## Fabric Requirements

One panel (2/3 yard) Winter-C6127 Snow  
1/4 yard Winter-C6133 Owl  
3/8 yard Winter-C6128 Powder  
3/4 yard Winter-C6132 Glacier  
5/8 yard Winter-C6131 Frost (includes 1/2 yard for binding)  
13/8 yards Soho-White  
13/4 yards Winter-C6129 Ice  
31/4 yards backing fabric of your choice  
57" x 81" batting

## Cutting

### From Winter-C6127 Snow:

- Trim and square the panel to 23 1/2" x 42".

### From Winter-C6133 Owl:

- Cut one 4 1/2" x WOF strip. Sub-cut six 4 1/2" squares.

### From Winter-C6128 Powder:

- Cut two 4 1/2" x WOF strips. Sub-cut ten 4 1/2" squares.

### From Winter-C6132 Glacier:

- Cut five 4 1/2" x WOF strips. Sub-cut forty 4 1/2" squares.

### From Winter-C6131 Frost:

- Cut two 1" x WOF strips.
- Cut seven 2 1/2" x WOF strips for binding.

### From Soho-White:

- Cut eight 2 1/2" x WOF strips. Sub-cut (120) 2 1/2" squares.
- Cut three 2 7/8" x WOF strips. Sub-cut forty 2 7/8" squares.
- Cut two 4 7/8" x WOF strips. Sub-cut twelve 4 7/8" squares.
- Cut three 2 1/2" x WOF strips.

### From Winter-C6129 Ice:

- Cut three 2 1/2" x WOF strips. Sub-cut forty 2 1/2" squares.
- Cut three 2 7/8" x WOF strips. Sub-cut forty 2 7/8" squares.
- Cut two 4 7/8" x WOF strips. Sub-cut twelve 4 7/8" squares.
- Cut two 2 1/2" x WOF strips.
- Cut two 3 3/4" x 24 1/2" length-of-fabric (LOF) strips along the dark border areas of the fabric.

## Block Assembly

All seam allowances are 1/4" and pieces are sewn right sides together.

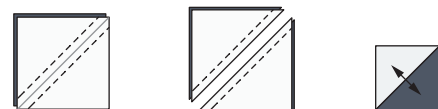
1. Sew one 1" x 42" C6131 Frost strip to each side of the C6127 Snow panel. Press seam allowances toward the border.
2. Sew one 3 3/4" x 24 1/2" C6129 Ice strip to the top and one to the bottom of the C6127 Snow panel, noting the print direction. Press seam allowances toward the borders.

### Block One

3. Draw a diagonal line on the wrong side of each 2 7/8" Soho-White square. With right sides together, sew a marked 2 7/8" Soho-White square to a 2 7/8" C6129 Ice square, stitching 1/4" on each side of the diagonal line. Cut on the line and press the triangles open.

Repeat with the remaining square pairs to make a total of eighty half-square triangles (HST) (*figure 1*).

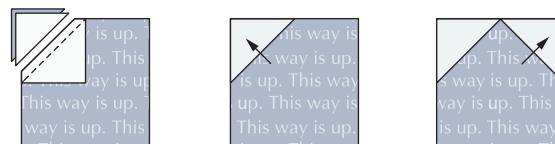
Fig. 1



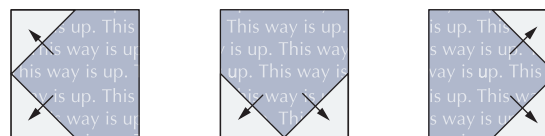
Make 80.

4. Sew one 2 1/2" Soho-White square to two corners of a 4 1/2" C6132 Glacier square as below noting the print direction. Trim, leaving 1/4" seam allowance and press the seam toward the white corner. Make ten units of each (*figure 2*).

Fig. 2



Make 10.



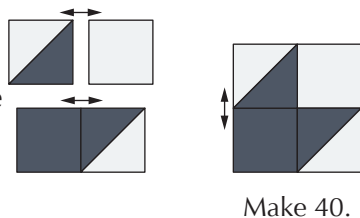
Make 10.

Make 10.

Make 10.



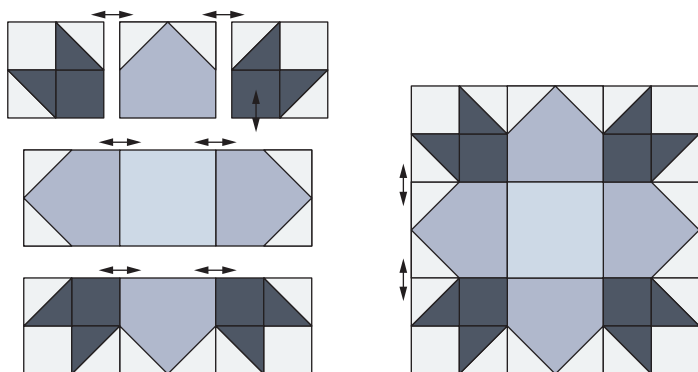
5. Make a four-patch with *Fig. 3* the two step 3 HST, one 2½" Soho-White and one 2½" C6129 Ice square. Repeat to make a total of forty units (*figure 3*).



Make 40.

6. With the 4½" C6128 Powder squares as centers, assemble nine-patch blocks according to Figure 4 noting the orientation of the print and four-patch blocks.

*Fig. 4*

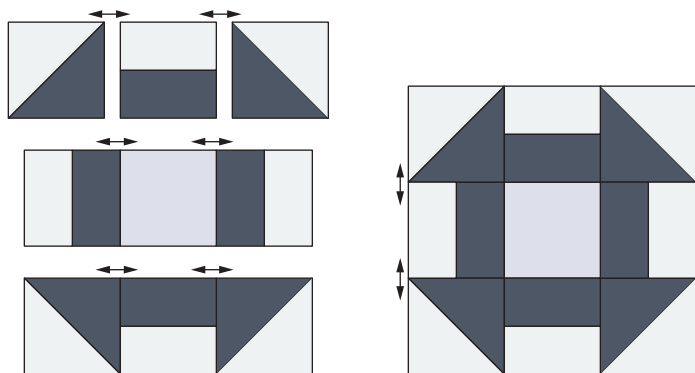


**Block One**  
Make 10.

### Block Two

7. Working with the 4⅞" Soho-White and 4⅞" C6129 Ice squares, make a total of twenty-four HST referring back to step 3.
8. Sew together the long edges of one 2½" x WOF Soho-White and one 2½" x WOF C6129 Ice strip.

*Fig. 5*



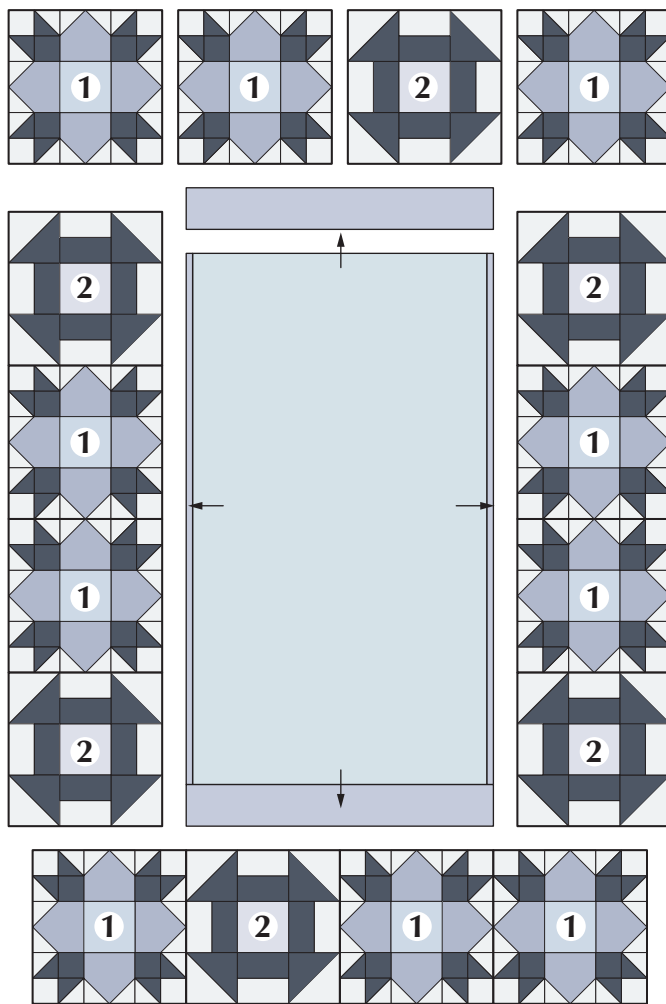
**Block Two**  
Make 6.

Repeat to make a total of two strip sets. Press seams allowances toward the C6129 Ice fabric. Cross-cut into twenty-four 4½" squares.

9. With the 4½" C6133 Owl squares as centers, assemble the six nine-patch blocks according to Figure 5.

### Quilt Top Assembly

10. Following the Quilt Assembly Diagram for placement and orientation, lay out the blocks as shown. Sew the blocks together in the top and bottom rows, matching adjacent seams.



**Quilt Assembly Diagram**

11. Sew the blocks together in each side column matching adjacent seams.
12. Sew a side column to each panel side, pressing seam allowances toward the panel. Sew the top and bottom rows to the panel to complete the quilt top.

## Finishing

13. Layer the quilt top, batting and backing and quilt as desired.
14. Stitch the binding strips together end to end using diagonal seams. Fold and press the resulting long strip in half lengthwise with wrong sides together. Stitch to the quilt front, matching raw edges and mitering the corners.
15. Fold the binding to the quilt underside and hand stitch the folded edge to the quilt back.

Denise Russell  
[www.piecedbrain.com](http://www.piecedbrain.com)

©2017 Timeless Treasures [www.ttfabrics.com](http://www.ttfabrics.com)

This pattern is for individual home use only. This pattern may not be reproduced for commercial purposes (i.e., may not be sold).



*Imagination... Passion... Creativity*