

IMPERIAL PARK

Designed by Elise Lea for RK
www.robertkaufman.com

Featuring *Imperial Collection* 



Finished quilt measures: 60-1/2" x 78-1/2"

Quilt shown in "INDIGO" colorstory. For alternate "SPRING" colorstory see pages 8-9.













Difficulty Rating: **Intermediate**

ROBERTKAUFMAN
F A B R I C S

For questions about this pattern, please email Patterns@RobertKaufman.com.

Fabric and Supplies Needed

Fabric amounts based on yardage that is 42" wide.

Color	Fabric	Name/SKU	Yardage	Color	Fabric	Name/SKU	Yardage
	A	AHYM-18621-62 INDIGO	2/3 yard (one full panel)		G	AHYM-18625-9 NAVY	1/8 yard
	B	AHYM-18624-9 NAVY	1 yard		H	AHYM-18622-9 NAVY	1/8 yard
	C	AHYM-18624-15 IVORY	1-1/8 yard		I	AHYM-18626-63 SKY	3/8 yard
	D	AHYM-18625-62 INDIGO	3/8 yard		J	AHYM-18626-15 IVORY	1/3 yard
	E	AHYM-18623-63 SKY	1/2 yard		K	AYHM-18622-62 INDIGO	1-1/4 yard
	F	AHYM-18626-9 NAVY	1/3 yard		Binding*	AHYM-18624-9 NAVY <small>*Also used for Fabric B</small>	5/8 yard
<p>Copyright 2019, Robert Kaufman For individual use only - Not for resale</p>				<p>You will also need: 5 yards for backing</p>			

Notes Before You Begin

- Read through all of the instructions before beginning.
- All of the seam allowances are 1/4" unless otherwise noted.
- Press seam allowances open unless otherwise noted.
- Width of fabric (WOF) is equal to at least 42" wide.
- Right sides together has been abbreviated to RST.
- Remember to measure twice and cut once!

Cutting Instructions

From Fabric A, fussy cut:

one 22" x 40" center panel

From Fabric B, cut:

five 2-1/2" x WOF strips. Sew together, end-to-end, then trim:

two 2-1/2" x 40-1/2" top/bottom Border 2 strips

two 2-1/2" x 54-1/2" side Border 2 strips

four 1-3/4" x WOF strips. Subcut:

two 1-3/4" x 24-1/2" top/bottom Border 1 strips

two 1-3/4" x 40" side Border 1 strips

six 1-1/4" x WOF strips. Sew together, end-to-end, then trim:

two 1-1/4" x 50" top/bottom Border 3 strips

two 1-1/4" x 66-1/2" side Border 3 strips

one 3" x WOF strip. Subcut:

eight 3" squares for the HSTs in the Blocks

Trim the remainder of the strip to 2-1/2" wide, then subcut:

four 2-1/2" squares for the Block centers

From Fabric C, cut:

six 3" x WOF strips. Subcut:

fifty-two 3" squares for the HSTs in the Blocks

twenty 3" squares for the HST Border

seven 2-1/2" x WOF strips. Subcut:

one hundred four 2-1/2" squares for Blocks

From Fabric D, cut:

four 3" x WOF strips. Subcut:

eight 3" squares for the HSTs in the Blocks

forty-two 3" squares for the HST Border

Trim the remainder of the last strip to 2-1/2" wide, then subcut:

four 2-1/2" squares for the Block centers

From Fabric E, cut:

four 3" x WOF strips. Subcut:

eight 3" squares for the HSTs in the Blocks

forty-five 3" squares for the HST Border

one 2-1/2" x WOF strip. Subcut:

four 2-1/2" squares for the Block centers

From Fabric F, cut:

three 3" x WOF strips. Subcut:

eight 3" squares for the HSTs in the Blocks

twenty-three 3" squares for the HST Border

Trim the remainder of the last strip to 2-1/2" wide, then subcut:

four 2-1/2" squares for the Block centers

From Fabric G, cut:

one 3" x WOF strip. Subcut:

eight 3" squares for the HSTs in the Blocks

Trim the remainder of the strip to 2-1/2" wide, then subcut:

four 2-1/2" squares for the Block centers

From Fabric H, cut:

one 3" x WOF strip. Subcut:

eight 3" squares for the HSTs in the Blocks

Trim the remainder of the strip to 2-1/2" wide, then subcut:

four 2-1/2" squares for the Block centers

From Fabric I, cut:

four 3" x WOF strips. Subcut:

four 3" squares for the HSTs in the Blocks

forty-three 3" squares for the HST Border

Trim the remainder of the last strip to 2-1/2" wide, then subcut:

two 2-1/2" squares for the Block centers

From Fabric J, cut:

three 3" x WOF strips. Subcut:

forty-one 3" squares for the HST Border

From Fabric K, cut:

seven 6" x WOF strips. Sew together, end-to-end, then trim:

two 6" x 68" side Border 4 strips

two 6" x 61" top/bottom Border 4 strips

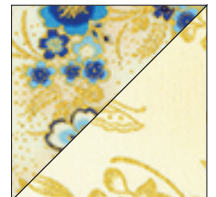
** For the Spring Colorstory, cut these borders from Fabric H

From the Binding Fabric, cut:

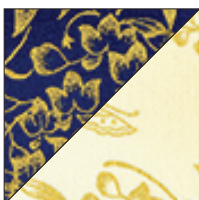
eight 2-1/2" x WOF strips

Assemble the Blocks

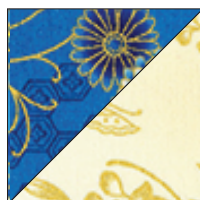
Step 1: Pair a 3" Fabric D square with a 3" Fabric C square, RST. Mark a diagonal line on the wrong side of one square. Sew 1/4" away from both sides of the marked line. Cut on the marked line, creating two half-square triangles (HSTs). Press toward the darker fabric. Trim to 2-1/2" square. Repeat to make sixteen D/C HSTs.



Step 2: Repeat Step 1 to make:



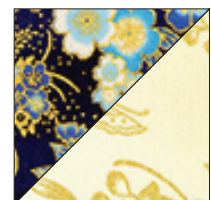
sixteen B/C HSTs



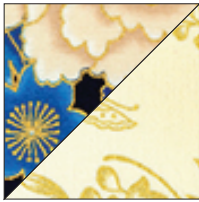
sixteen E/C HST



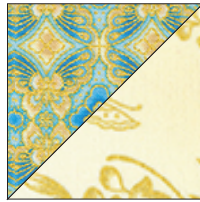
sixteen F/C HSTs



sixteen G/C HSTs

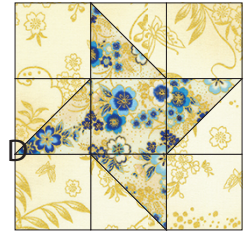


sixteen H/C HSTs



eight I/C HSTs

Step 3: Gather:
four 2-1/2" Fabric C squares
one 2-1/2" Fabric D square
four D/C HSTs



Arrange the units into three rows of three. Note the fabric placement and block orientation in the Block Assembly Diagram.

Step 4: Sew the squares together to form the rows. Press the seams away from the HSTs.

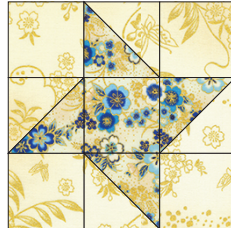
Step 5: Sew the rows together, nesting the seams and pressing the seams to one side to form the block.

The resulting Block should measure 6-1/2" square. Make four Fabric D Blocks.

Repeat Steps 3-5 to make:



four Fabric B Blocks



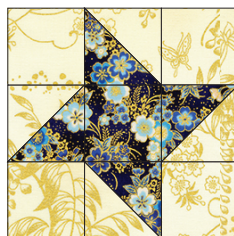
four Fabric D Blocks



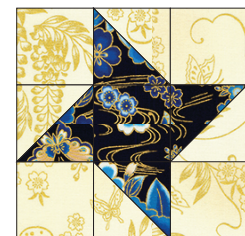
four Fabric E Blocks



four Fabric F Blocks



four Fabric G Blocks



four Fabric H Blocks



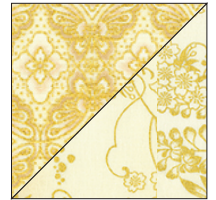
two Fabric I Blocks

Step 6: Gather Blocks and sew together in this order: E - F - G - B. Press. Repeat to make a second Border like this. These are the top and bottom Block Borders.

Step 7: Gather Blocks and sew together in this order: D - I - D - E - F - G - B - H - H. Press. Repeat to make a second Border like this. These are the left and right Block Borders.

Assemble the Half-Square Triangle Border

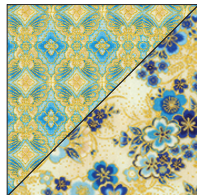
Step 8: Pair a 3" Fabric C square with a 3" Fabric J square, RST. Mark a diagonal line on the wrong side of one square. Sew 1/4" away from both sides of the marked line. Cut on the marked line, creating two half-square triangles (HSTs). Press toward the darker fabric. Trim to 2-1/2" square. Repeat to make forty C/J HSTs.



Step 9: Repeat Step 8 to make:



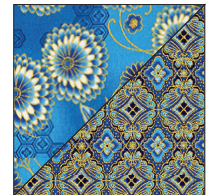
forty-one J/D HSTs



forty-two I/D HSTs



forty-four E/I HSTs



forty-five E/F HSTs

Step 10: Gather HST Blocks in the fabrics shown and sew together to form the left side HST Border. *Tip: It may be helpful to arrange the HSTs for all four HST Borders before sewing.*



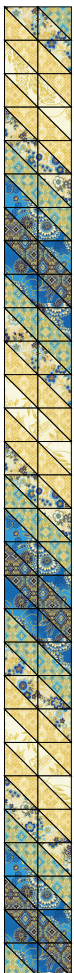
Step 11: Gather HST Blocks in the fabrics shown and sew together to form the right side HST Border.



Step 12: Gather HST Blocks in the fabrics shown and sew together to form the top HST Border.



Step 13: Gather HST Blocks in the fabrics shown and sew together to form the bottom HST Border.



Assemble the Quilt



Step 14: Sew the side Border 1 strips to the sides of the quilt center. Press toward the borders. Sew the top and bottom Border 1 strips to the quilt center. Press toward the borders.

Step 15: Sew the top and bottom Block Borders to the quilt center, noting the orientation in the Quilt Assembly Diagram. Press toward the quilt center. Sew the left and right Block Borders to the quilt center, noting the orientation in the Quilt Assembly Diagram. Press toward the quilt center.

Step 16: Sew the side Border 2 strips to the sides of the quilt center. Press toward the borders. Sew the top and bottom Border 2 strips to the quilt center. Press toward the borders.

Step 17: Sew the side HST Borders to the sides of the quilt center. Press toward the borders. Sew the top and bottom HST Borders to the quilt center. Press toward the borders. Be sure to take care to orient the borders correctly so that it matches the Quilt Assembly Diagram.

Step 18: Sew the side Border 3 strips to the sides of the quilt center. Press toward the borders. Sew the top and bottom Border 3 strips to the quilt center. Press toward the borders.

Step 19: Sew the side Border 4 strips to the sides of the quilt center. Press toward the borders. Sew the top and bottom Border 4 strips to the quilt center. Press toward the borders.












Your quilt top is complete! Baste, quilt, bind and enjoy!



IMPERIAL PARK - Spring Colorstory

Fabric and Supplies Needed

Fabric amounts based on yardage that is 42" wide.

Color	Fabric	Name/SKU	Yardage	Color	Fabric	Name/SKU	Yardage
	A	AHYM-18621-192 SPRING	2/3 yard (one full panel)		G	AHYM-18625-2 BLACK	1/8 yard
	B	AHYM-18624-2 BLACK	7/8 yard		H	AHYM-18622-2 BLACK	1-3/8 yard
	C	AHYM-18624-15 IVORY	1-1/8 yard		I	AHYM-18626-192 SPRING	3/8 yard
	D	AHYM-18625-15 IVORY	3/8 yard		J	AHYM-18626-15 IVORY	1/3 yard
	E	AHYM-18626-3 RED	3/8 yard		Binding*	AHYM-18624-2 BLACK	5/8 yard
	F	AHYM-18623-3 RED	1/3 yard	*Also used for Fabric B			

Copyright 2019, Robert Kaufman
For individual use only - Not for resale

You will also need:
5 yards for backing