

Land That I Love

A Free Project Sheet
NOT FOR RESALE



Design by Lisa Loessel

Wreath

Skill Level: Beginner



Henry Glass & Co., Inc.



facebook

Finished Pillow Size: 24" diameter
49 West 37th Street, New York, NY 10018
tel: 212-686-5194 fax: 212-532-3525
Toll Free: 800-294-9495
www.henryglassfabrics.net

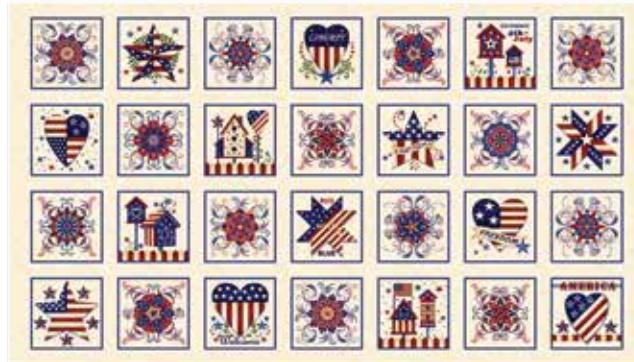
LAND THAT I LOVE Wreath

Finished Pillow Size: 24" diameter

Fabrics in the Collection



Banner Panel - Cream
2256P-33



Blocks - Cream
2257-33



Border Stripe - Cream
2259-33



Bunting Stripe - Cream
2260-33



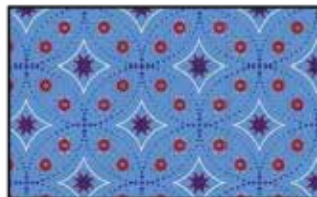
Swirly Stars - Cream
2262-33



Swirly Stars - Navy
2262-77



Swirly Stars - Red
2262-88



Bandana Stars - Light Blue
2263-76



Bandana Stars - Navy
2263-77



Bandana Stars - Red
2263-88



Words - Cream
2264-33



Words - Navy
2264-77

Select Fabrics from the Folio Basics Collections



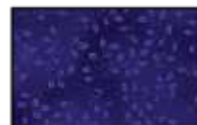
Cream
7755-04



Sky
7755-11



Medium Blue
7755-75



Royal
7755-77



Red
7755-88



Wine
7755-89

LAND THAT I LOVE

Page 1

Wreath

Wreath Materials

2 ¾ yards	Bunting Stripe - Cream (A)	2260-33
⅓ yard	Folio - Cream (B)	7755-04
⅓ yard	Folio - Royal (C)	7755-77
⅓ yard	Folio - Medium Blue (D)	7755-75
⅓ yard	Folio - Red (E)	7755-88
¼ yard	Folio - Wine (F)	7755-89

You will also need:

- ½ yard Timtex for stars
- 6" metal ring
- 2 yards stabilizer
- Fabric glue or hot glue gun

Wreath Cutting Instructions

Please note: all strips are cut across the width of fabric (WOF) from selvage to selvage edge unless otherwise noted.

From the Bunting Stripe - Cream (A):

Fussy cut (32) printed strips.

From the Folio - Cream (B), cut:

See instructions to cut (8) Medium Stars.

See instructions to cut (2) Small Stars.

From the Folio - Royal (C), cut:

See instructions to cut (6) Large Stars.

See instructions to cut (4) Small Stars.

From the Folio - Medium Blue (D), cut:

See instructions to cut (2) Large Stars.

See instructions to cut (6) Medium Stars.

From the Folio - Red (E), cut:

See instructions to cut (6) Medium Stars.

See instructions to cut (4) Small Stars.

From the Folio - Wine (F), cut:

See instructions to cut (6) Large Stars.

Wreath Sewing Instructions

1. Place (2) Fabric A strips right sides together. Stitch around the pairs strips leaving an opening for turning. Turn the Fabric A strip right side out and whip stitch the opening closed (Fig. 1). Repeat with the remaining (30) strips to make (16) Strips for the wreath.

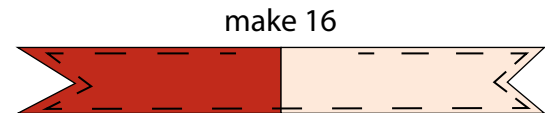


Fig. 1

2. Fold one strip over the top of the ring, using a zipper foot stitch the folded strip, keeping the seam close to the ring edge. Repeat at the bottom of the ring and at each side (Fig. 2).

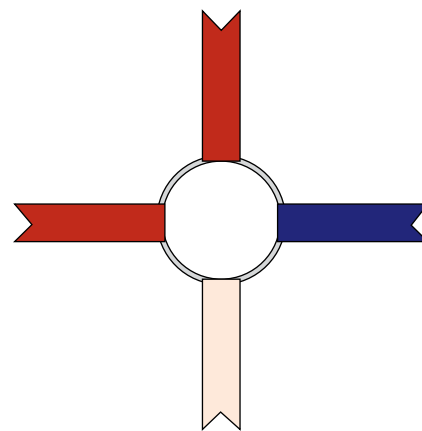


Fig. 2

3. Follow Figures 3-5 to continue to add the strips to the wreath until all (16) strips are secure on the ring.

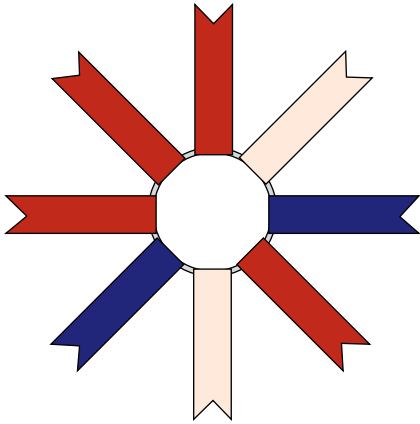


Fig. 3

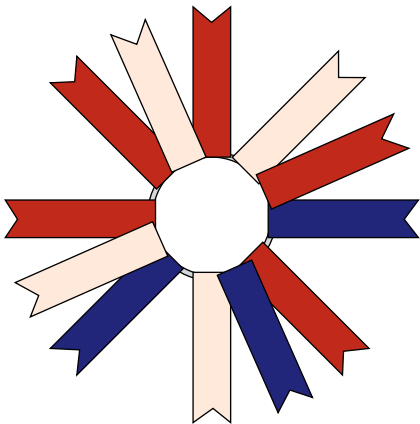


Fig. 4

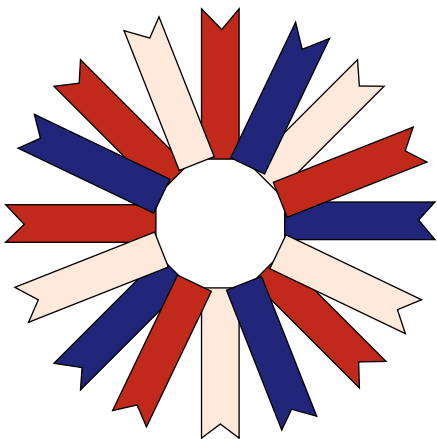


Fig. 5

4. Back each star with stabilizer.

5. Place two large stars right sides together, stitch the two star halves together leaving an opening for turning. Turn the sewn star right sides out and whip stitch the opening closed. Repeat with the remaining stars.

6. Arrange the stars as desired on the front of the wreath and glue them in place to complete the wreath (Fig. 6).

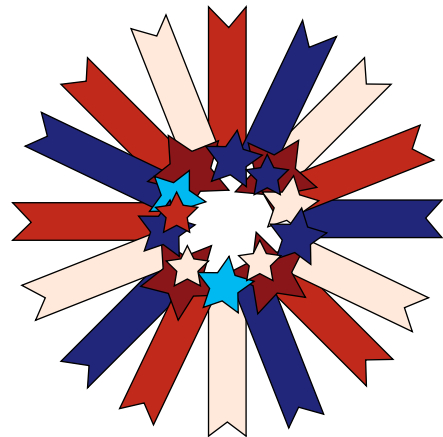
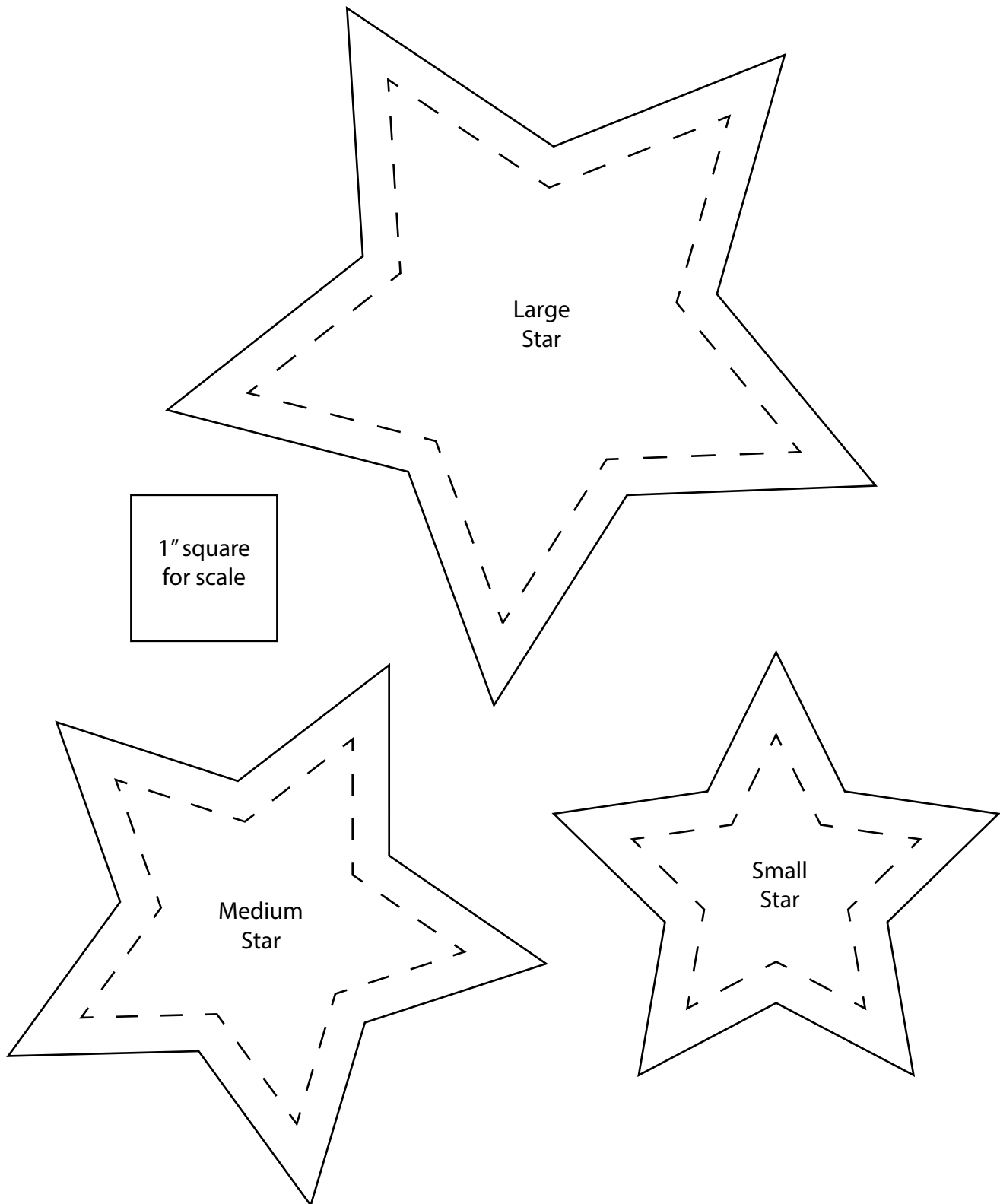


Fig. 6



Every effort has been made to ensure that all projects are error free. All the information is presented in good faith, however no warranty can be given nor results guaranteed as we have no control over the execution of instructions. Therefore, we assume no responsibility for the use of this information or damages that may occur as a result. When errors are brought to our attention, we make every effort to correct and post a revision as soon as possible. Please make sure to check www.henryglassfabrics.net for pattern updates prior to starting the project. We also recommend that you test the project prior to cutting for kits. Finally, all free projects are intended to remain free to you and are **not for resale**.