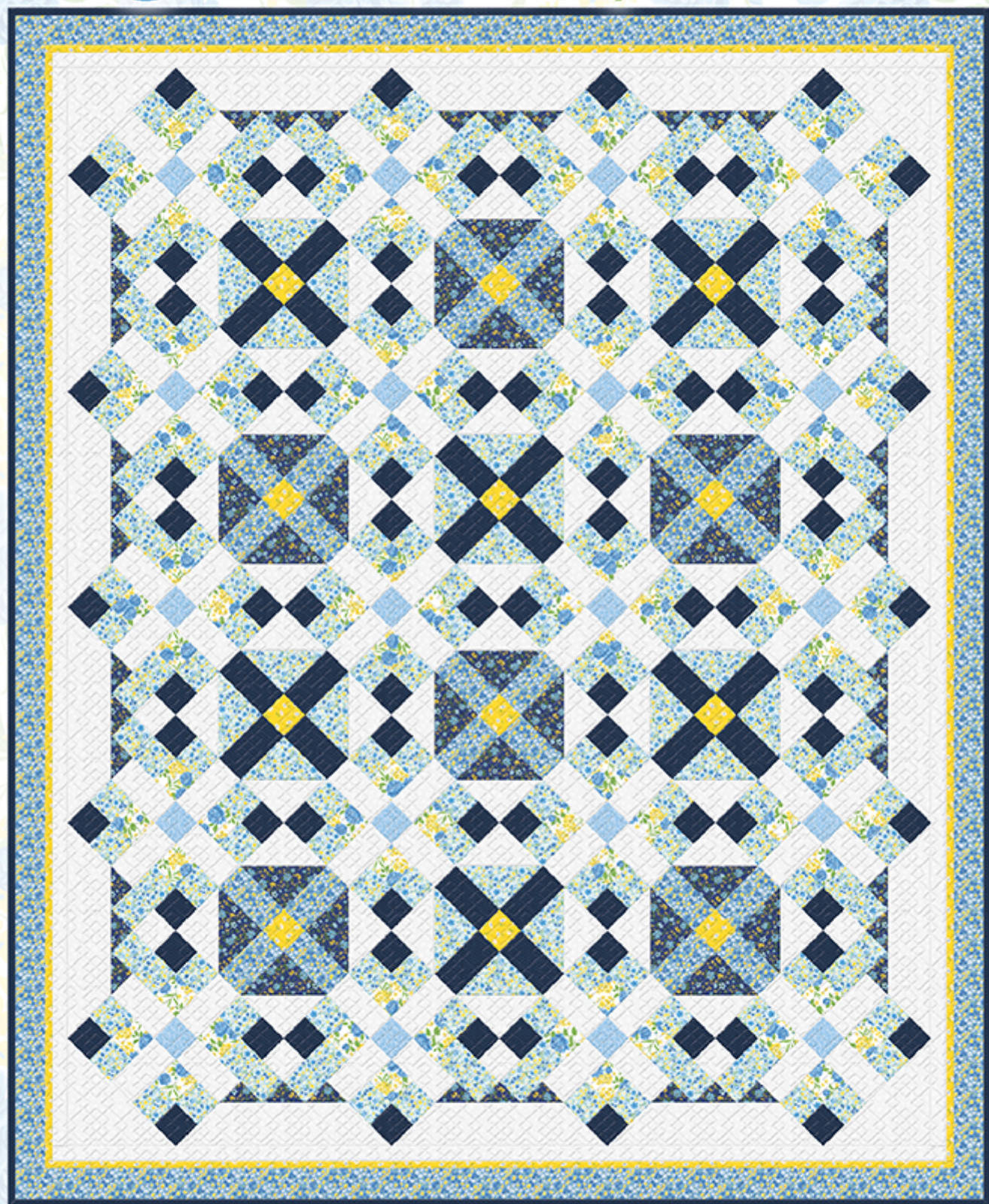


1458

Fleurette

by WP Studio



www.wilmingtonprints.com

Blue Twin Quilt: 63 5/8" x 77 3/4"

Wilmington Prints: A World of Possibilities

Fleurette

Please read all instructions carefully AND identify all fabrics before beginning.

All instructions include a 1/4" seam allowance and strips are cut selvage to selvage, unless stated otherwise.

1. Cut the following:

If using FAT CUTS, you may need to cut additional width-of-fabric strips.

Fabric A - Cut (5) 2-1/2" strips

Fabric B - Cut (2) 4-7/8" strips, subcut (12) 4-7/8" squares [then cut in half diagonally for 24 triangles] and (7) 2-7/8" squares

Cut (1) 2-7/8" strip, subcut (14) 2-7/8" squares then cut all 2-7/8" squares in half diagonally for 42 triangles

Fabric C - Cut (2) 4-7/8" strips, subcut (12) 4-7/8" squares then cut in half diagonally for 24 triangles

Cut (2) 2-1/2" strips, subcut (28) 2-1/2" squares
Cut (10) 2-1/2" strips

Fabric D - Cut (7) 2-1/2" strips, sewn together end to end and cut into (2) 2-1/2" x 74-1/4" and (2) 2-1/2" x 64-1/8" borders

Cut (3) 2-1/2" strips, subcut (24) 2-1/2" x 4-1/2" pieces

Fabric E - Cut (8) 2-1/2" strips (binding)
Cut (5) 2-1/2" strips

Cut (3) 2-1/2" strips, subcut (24) 2-1/2" x 4-1/2" pieces

Fabric F - Cut (1) 2-1/2" strip, subcut (12) 2-1/2" squares

Cut (7) 1-1/2" strips, sewn together end to end and cut into (2) 1-1/2" x 74-1/4" and (2) 1-1/2" x 60-1/8" strips for flat piping

Fabric G - Cut (2) 2-1/2" strips, subcut (20) 2-1/2" squares

Fabric H - Cut (2) 15-1/2" strips, subcut (4) 15-1/2" squares [then cut in half diagonally twice for 16 triangles] and (2) 8" squares then cut in half diagonally for 4 triangles

NOTE: Not all Fabric H 15-1/2" triangles cut are used.

Fabric H - (continued)

Cut (3) 4-7/8" strips, subcut (24) 4-7/8" squares then cut in half diagonally for 48 triangles

Cut (10) 2-1/2" strips, subcut (80) 2-1/2" x 4-1/2" pieces and (14) 2-1/2" squares

Cut (7) 2" strips, sewn together end to end and cut into (2) 2" x 71-1/4" and (2) 2" x 60-1/8" borders

2. Piecing Order:

1. Stitch **Fabrics C** and **E** 2-1/2" strips



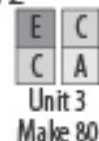
together length-wise. Make a total of 5 strip sets. From these cut (80) 2-1/2" wide Unit 1a (2-1/2" x 4-1/2" unfinished).

2. Stitch **Fabrics A** and **C** 2-1/2" strips together length-

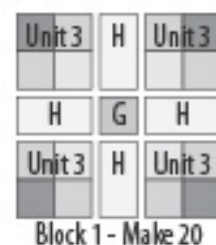


wise. Make a total of 5 strip sets. From these cut (80) 2-1/2" wide Unit 1b (2-1/2" x 4-1/2" unfinished).

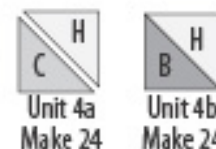
3. Sew 1 each Units 1a and 1b together as shown. Make a total of 80 Unit 3 (4-1/2" square unfinished).



4. Arrange 4 Unit 3, 4 **Fabric H** 2-1/2" x 4-1/2" pieces, and 1 **Fabric G** 2-1/2" square in 3 rows. Stitch into rows. Sew rows together. Make a total of 20 **Block 1** (10-1/2" square unfinished).



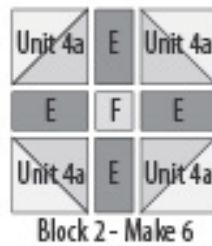
5. Sew 1 each **Fabrics C** and **H** 4-7/8" triangles together along their long edges. Make a total of 24 Unit 4a (4-1/2" square unfinished). In the same manner, make 24 Unit 4b with fabrics indicated.



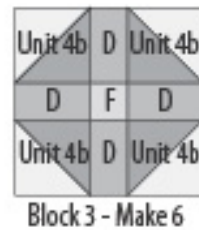
Shading of diagrams may vary depending on fabrics used.

Fleurette

6. Arrange 4 **Unit 4a**, 4 **Fabric E** $2\text{-}1/2" \times 4\text{-}1/2"$ pieces, and 1 **Fabric F** $2\text{-}1/2"$ square in 3 rows. Stitch into rows. Sew rows together. Make a total of 6 **Block 2** ($10\text{-}1/2"$ square unfinished).



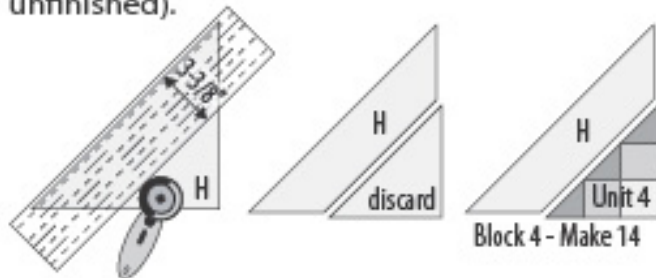
7. Arrange 4 **Unit 4b**, 4 **Fabric D** $2\text{-}1/2" \times 4\text{-}1/2"$ piece, and 1 **Fabric F** $2\text{-}1/2"$ squares in 3 rows. Stitch into rows. Sew rows together. Make a total of 6 **Block 3** ($10\text{-}1/2"$ square unfinished).



8. Arrange 3 **Fabric B** $2\text{-}7/8"$ triangles, 2 **Fabric C** $2\text{-}1/2"$ squares, and 1 **Fabric H** $2\text{-}1/2"$ square in 3 rows as shown. Stitch into rows. Sew rows together. Make a total of 14 **Unit 4** ($6\text{-}7/8" \times 6\text{-}7/8" \times 9\text{-}3/4"$ unfinished).



9. Trim 14 **Fabric H** $15\text{-}1/2"$ triangles to $3\text{-}3/8"$ wide, measuring from the long edge. Sew each of these to a **Unit 4**. Make a total of 14 **Block 4** ($10\text{-}7/8" \times 10\text{-}7/8" \times 15\text{-}3/8"$ unfinished).



10. Refer to Quilt Layout (Page 3) for arrangement and placement of blocks, **Fabric H** $8"$ triangles, strips, and borders.

11. Arrange blocks and **Fabric H** $8"$ triangles in 10 diagonal rows. Stitch into diagonal rows. Sew rows together, completing quilt center ($57\text{-}1/8" \times 71\text{-}1/4"$ unfinished).

12. Sew **Fabric H** $2" \times 71\text{-}1/4"$ borders to right and left sides of quilt center. Add **Fabric H** $2" \times 60\text{-}1/8"$ borders to top and bottom of quilt center.

13. Fold and press **Fabric F** $1\text{-}1/2" \times 74\text{-}1/4"$ and $1\text{-}1/2" \times 60\text{-}1/8"$ strips in half lengthwise, right side out, forming $3/4"$ wide flat piping strips.

14. Baste $3/4" \times 74\text{-}1/4"$ **Fabric F** flat piping strips on top of sides of quilt, with raw edges even with raw edges of **Fabric H** border. Baste $3/4" \times 60\text{-}1/8"$ **Fabric F** flat piping on top of top and bottom of quilt, with raw edges even with raw edges of **Fabric H** border.

15. Stitch **Fabric D** $2\text{-}1/2" \times 74\text{-}1/4"$ borders to right and left sides of quilt. Press toward **Fabric D** borders leaving flat piping over **Fabric H** borders.

16. Sew **Fabric D** $2\text{-}1/2" \times 64\text{-}1/8"$ borders to top and bottom of quilt. Press toward **Fabric D** borders leaving flat piping over **Fabric H** borders.

17. The quilt measures approximately $64\text{-}1/8" \times 78\text{-}1/4"$ (unfinished). Make backing (**Fabric I**) approximately $8"$ larger than the top.

18. Layer and baste top, batting, and backing together. Quilt as desired. Attach binding (**Fabric E**) and enjoy!!

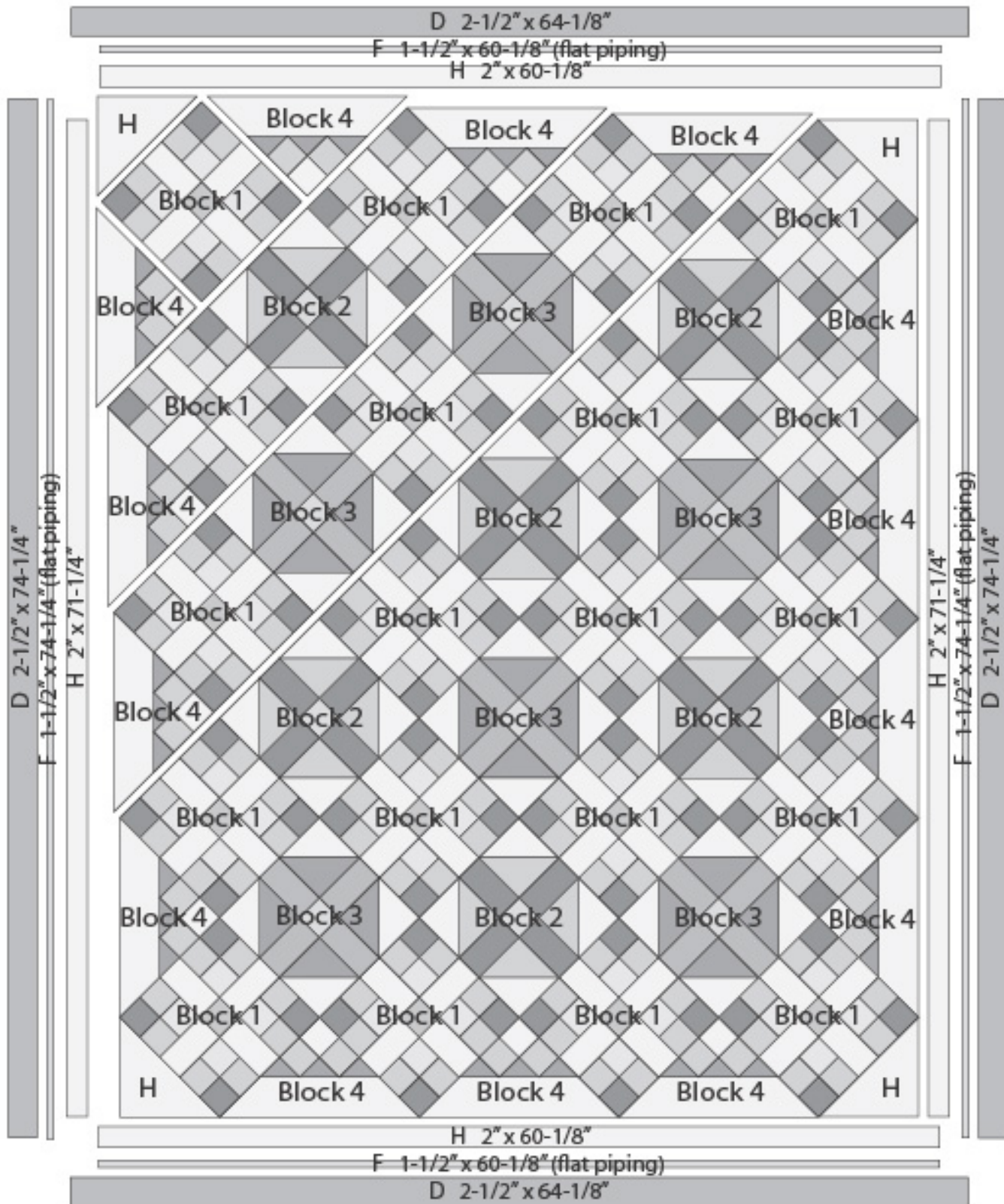
Shading of diagrams may vary depending on fabrics used.

Fleurette

QUILT LAYOUT

Border measurements are the cut size.

Shading of Quilt Layout may vary depending on fabrics used.



Fleurette

by WP Studio



Fabric A
1458-19906-145
1/2 yd.



Fabric B
1458-19907-457
1/2 yd.



Fabric C
1458-19908-445
1 3/8 yds.



Fabric D
1458-19909-415
1 yd.



Fabric E
1817-39091-444
1 3/8 yds. (incl. binding)



Fabric F
1458-19911-514
1/2 yd.



Fabric G
1458-19912-444
1/4 yd. (FE)



Fabric H
1817-39096-100
2 2/3 yds.



Fabric I
1458-19910-155
4 7/8 yds. (backing only)

**FE = fat eighths

