

# BLOCK HEADS

## ROUND 2

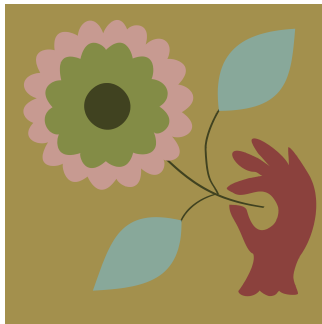
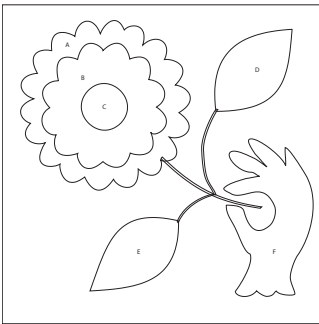


### WHAT YOU'LL NEED

For fabric choices refer to the block diagram  
1 rectangle 12 1/2" x 12 1/2" for the background  
Assorted scraps for appliqué  
2 sheets of Freezer Paper letter size  
Embroidery Floss

4. Embroider the stems using two strands of embroidery floss and backstitch. Press the block on the wrong side. Block measures 12 1/2" x 12 1/2".

### ALTERNATIVE COLOR WAY



### ASSEMBLY

1. The appliqué patterns are on the following pages. Instructions are written for needle-turn appliqué (see also BASIC INSTRUCTIONS). But you may use your preferred method.
2. Print out the sheets with the single pattern shapes onto the MATTE side of Freezer Paper (or trace them onto the Freezer Paper).
3. Position appliqué A on the background square, referring to the key block diagram. Pin or baste to the background and appliqué in place. In the same manner appliqué all shapes in numerical order.

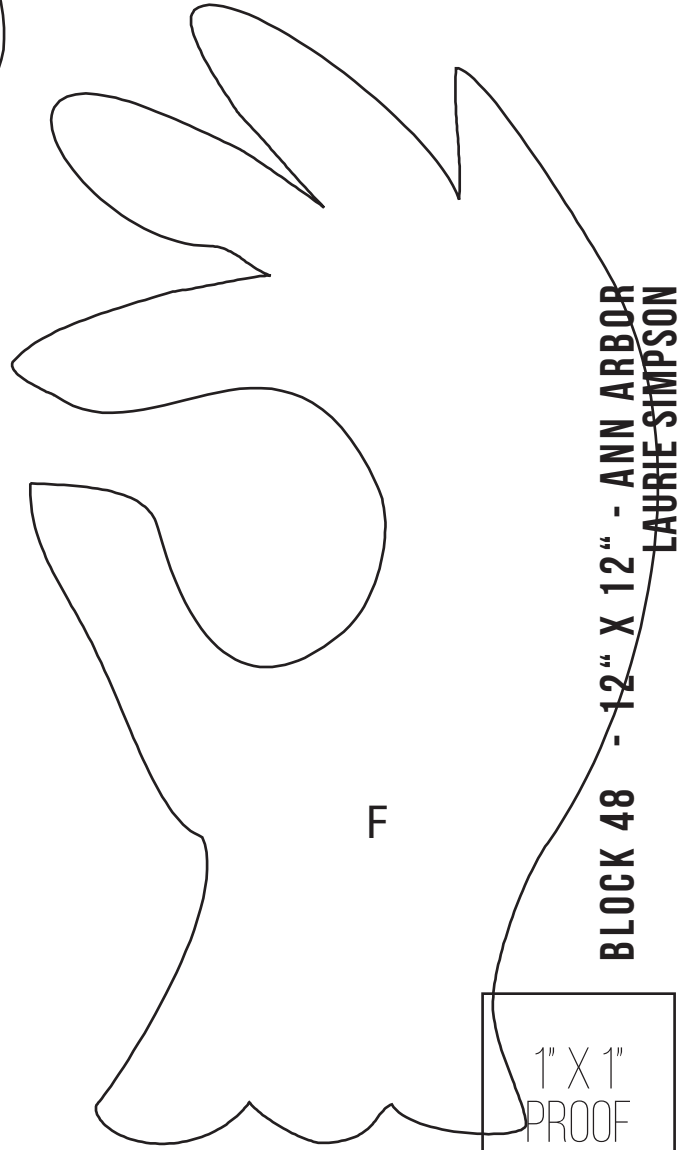
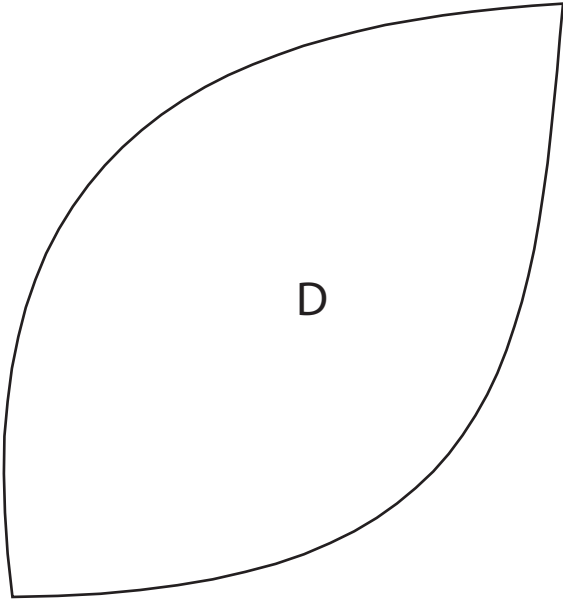
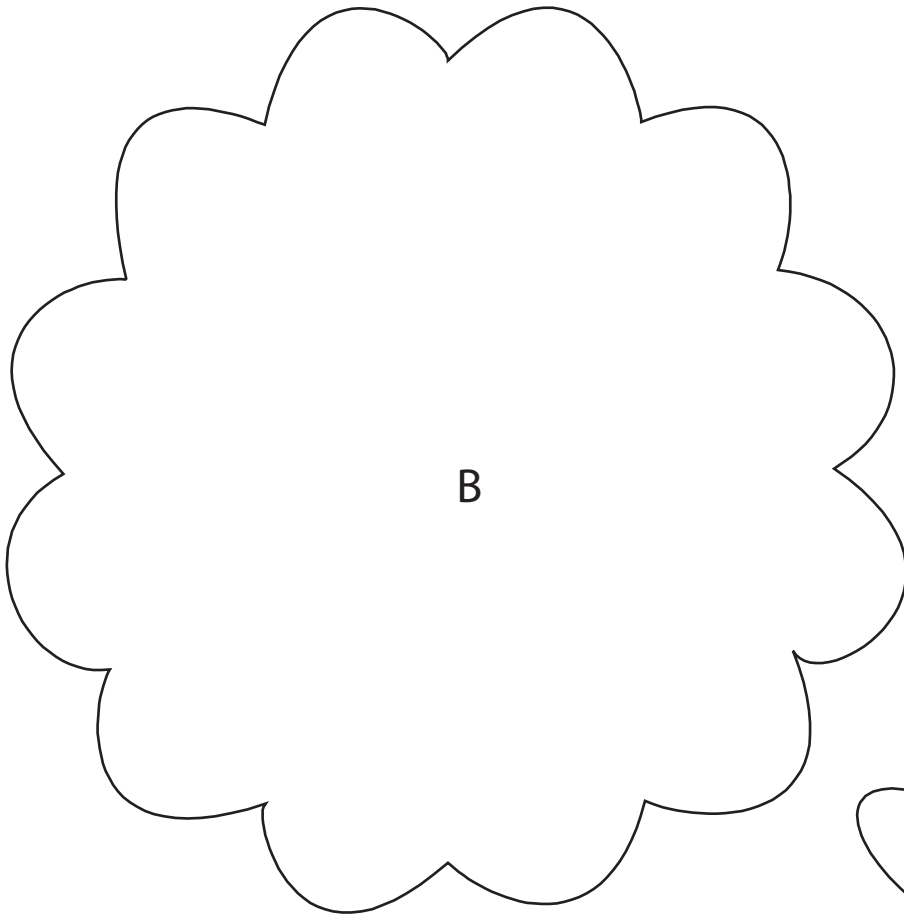
Click to connect with us



2018 Block Heads  
Participating Designers  
For more info about the designer click on their name

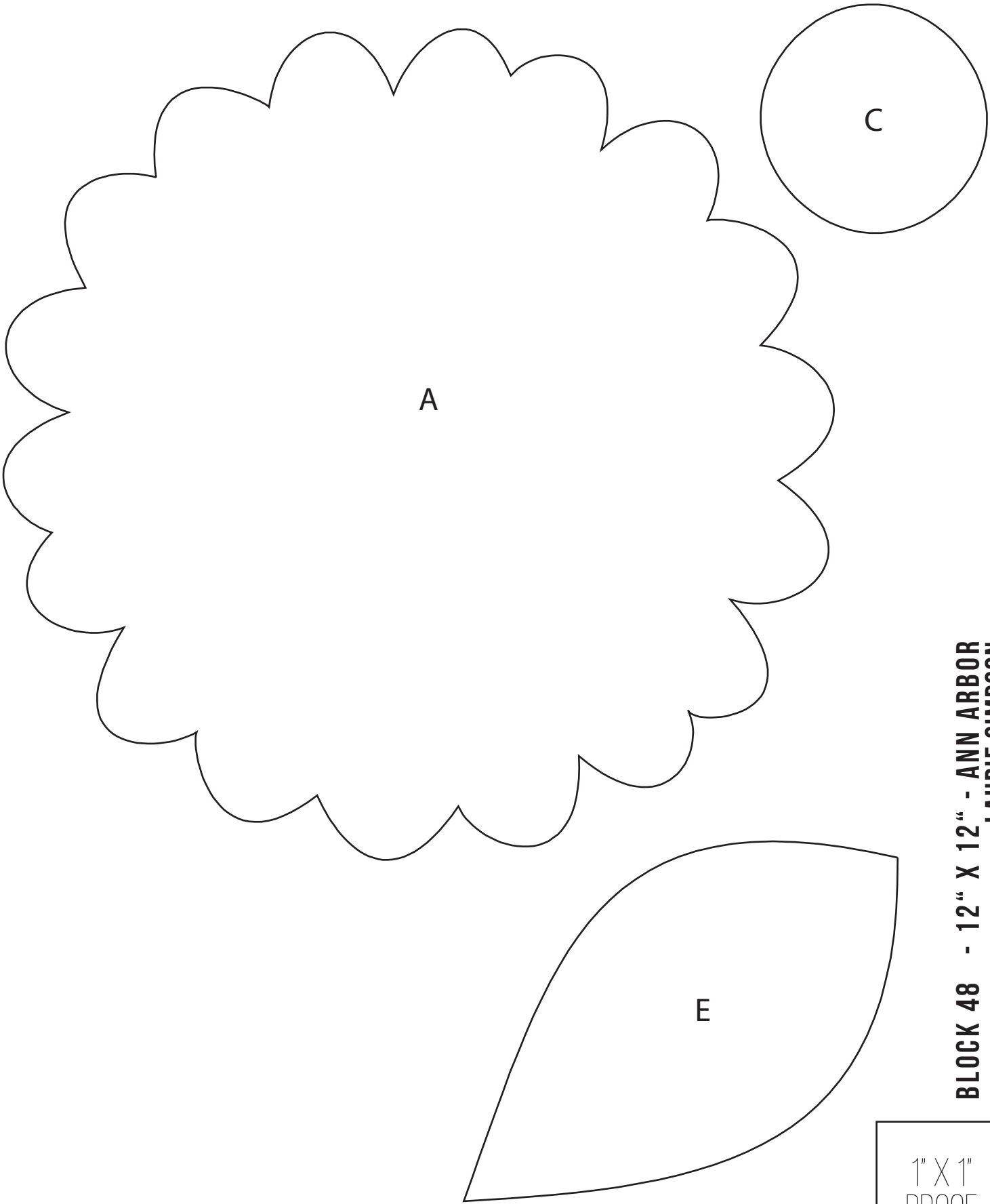
Share your blocks on social media  
[#modablockheads](#)  
[#showmethemoda](#)

[Betsy Chutchian](#)  
[Brigitte Heitland of Zen Chic](#)  
[Carrie Nelson](#)  
[Corey Yoder](#)  
[Jan Patek](#)  
[Jo Morton](#)  
[Laurie Simpson](#)  
[Lisa Bongeant of Primitive Gatherings](#)  
[Lynne Hagmeier of Kansas Troubles](#)  
[Barbara & Mary of Me & My Sister Designs](#)  
[Sherri McConnell](#)  
[Stacy Iest Hsu](#)  
[Vanessa Goertzen of Lella Boutique](#)



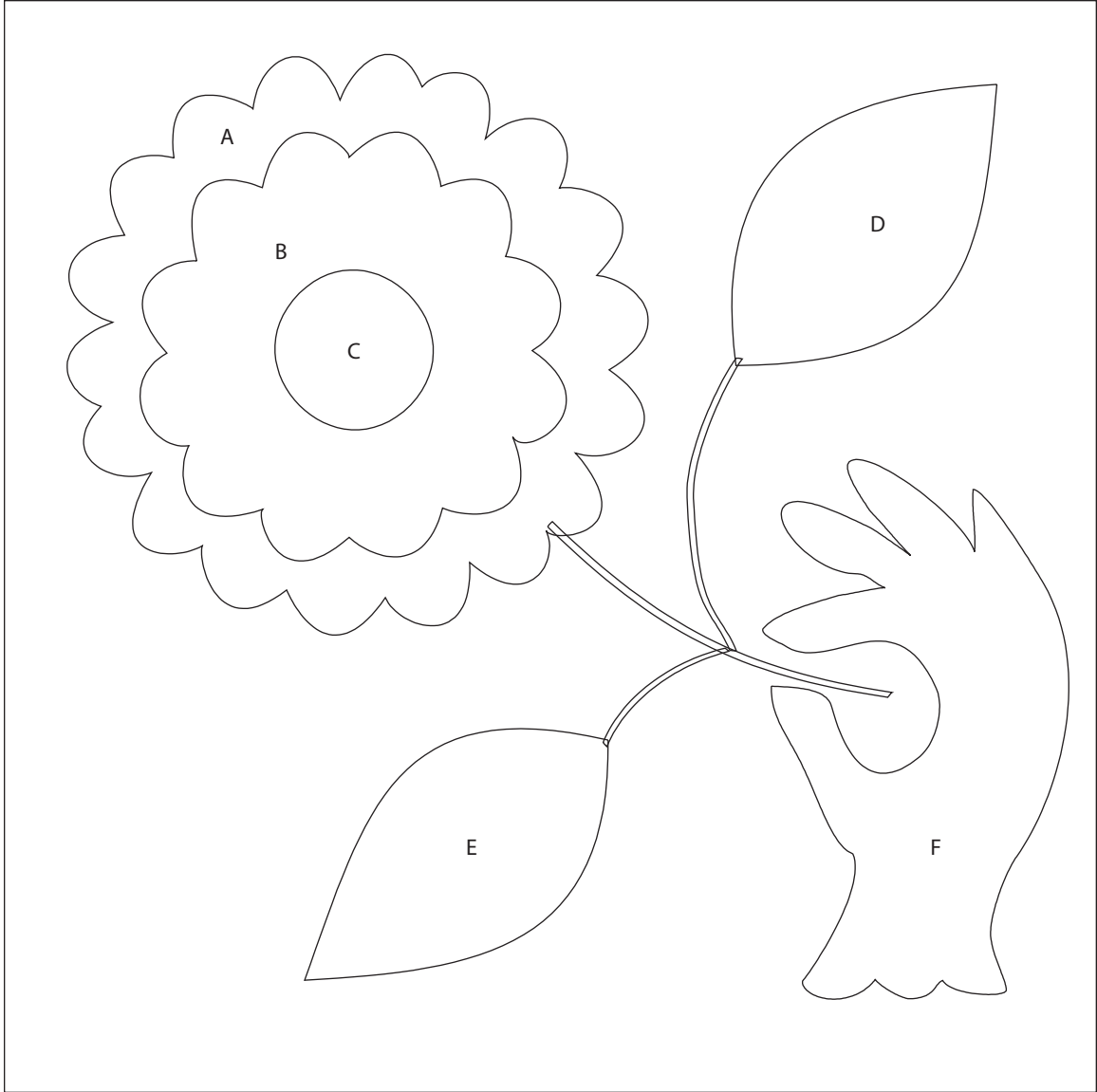
**BLOCK 48 - 12" X 12" - ANN ARBOR  
LAURIE SIMPSON**

1" X 1"  
PROOF



**BLOCK 48 - 12" X 12" - ANN ARBOR  
LAURIE SIMPSON**

1" X 1"  
PROOF



Key Block, 50% of actual size