

# Lanterns in the Cabin

by Kim Diehl



Finished Quilt Size: 92½" x 106½"

Finished Star Block Size: 14" x 14"

A Free Project Sheet from



Henry Glass & Co., Inc.



49 West 37th Street, New York, NY 10018

tel: 212-686-5194 • fax: 212-532-3525

Toll-free: 800-294-9495

[www.henryglassfabrics.com](http://www.henryglassfabrics.com)

facebook



# Lanterns in the Cabin

**Finished Quilt Size:** 92½" x 106½"

**Finished Star Block Size:** 14" x 14"

## MATERIALS

*Yardages are based on a 42" width of useable fabric after prewashing and removing selvages.*

23 fat quarters (18" x 21") of assorted prints for blocks and border (1417-30, 40, 66; 1418-33, 88; 1419-30, 88;

1420-11, 30; 1421-70, 88; 1422-11; 1423-88; 1424-33, 55, 88; 1425-40, 66; 1426-33, 66, 77; 1427-33, 88)

1⅜ yards each of 4 cream prints for blocks (1428-44; 1429-44; 1430-44; 1431-44)

1½ yards of black serpentine swirls print for blocks (1422-99)

1 yard of black floral sprays print for blocks and binding (1419-99)

4⅞ yards of 108"-wide backing print (Kim suggests the spiced seaweed print, 0894-44)

99" x 113" rectangle of batting

Standard sewing and quilting supplies

## CUTTING

*Cut all pieces across the width of the fabric in the order given unless otherwise noted.*

**From the 23 assorted prints (excluding black), choose your favorite 21 prints; from each of these 21 prints, cut:**

8 squares, 2½" x 2½" (combined total of 168)

Keep squares organized by print. Reserve the remainder of the assorted prints.

**From the reserved remainder of all assorted prints (excluding black), cut a combined total of:**

84 rectangles, 1½" x 2½"\*

168 rectangles, 1½" x 6½"\*

84 rectangles, 1½" x 10½"\*

*\*You may wish to cut a few extra rectangles in each given size for added choices when stitching the blocks.*

Enough random length 2½"-wide pieces to make a 400"-long strip when joined together end to end. †

Enough random length 2½"-wide pieces to make a 375"-long strip when joined together end to end. †

†Kim used a blend of 2½" squares and 2½"-wide rectangles in assorted lengths up to 10½" long.

**From the 4 assorted cream prints, cut a combined total of:**

168 rectangles, 2½" x 6½"

168 rectangles, 2½" x 4½"

273 squares, 2½" x 2½"

**From the black serpentine swirls print, cut:**

16 strips, 2½" x 42"; crosscut into 252 squares, 2½" x 2½"

**From the black floral sprays print, cut:**

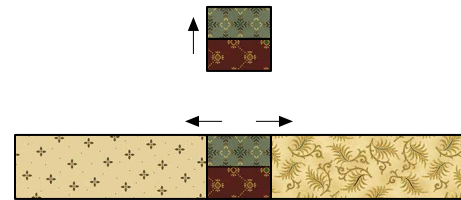
2 strips, 2½" x 42"; crosscut into 21 squares, 2½" x 2½"

10 binding strips, 2½" x 42"

## PIECING THE IRISH CHAIN BLOCKS

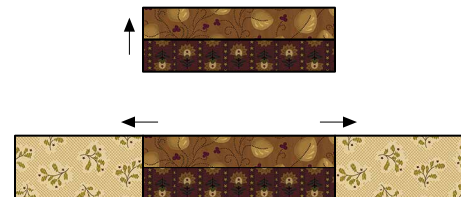
*Sew all pieces with right sides together and a ¼" seam allowance unless otherwise noted. Press the seam allowances as indicated by the arrows or otherwise directed.*

- 1 Choosing the prints randomly, select two assorted print 1½" x 2½" rectangles and two cream 2½" x 6½" rectangles. Join the assorted 1½" x 2½" rectangles along the long edges. Press. Join a cream 2½" x 6½" rectangle to each short end of the pieced rectangles. Press. Repeat for a total of 42 pieced row 1 and 7 patchwork units measuring 2½" x 14½", including the seam allowances.



Make 42 units, 2½" x 14½",  
for rows 1 and 7.

- 2 Select two assorted print 1½" x 6½" rectangles and two cream 2½" x 4½" rectangles. Join the assorted 1½" x 6½" rectangles along the long edges. Press. Join a cream 2½" x 4½" rectangle to each short end of the pieced rectangles. Press. Repeat for a total of 42 pieced row 2 and 6 patchwork units measuring 2½" x 14½", including the seam allowances.



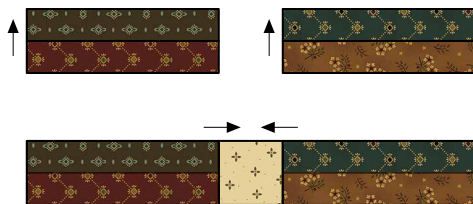
Make 42 units, 2½" x 14½",  
for rows 2 and 6.

- 3 Choose two assorted print  $1\frac{1}{2}$ " x  $10\frac{1}{2}$ " rectangles and two cream  $2\frac{1}{2}$ " squares. Join the assorted  $1\frac{1}{2}$ " x  $10\frac{1}{2}$ " rectangles along the long edges. Press. Join a cream  $2\frac{1}{2}$ " square to each short end of the pieced rectangles. Press. Repeat for a total of 42 pieced row 3 and 5 patchwork units measuring  $2\frac{1}{2}$ " x  $14\frac{1}{2}$ ", including the seam allowances.



Make 42 units,  $2\frac{1}{2}$ " x  $14\frac{1}{2}$ ",  
for rows 3 and 5.

- 4 Select four assorted print  $1\frac{1}{2}$ " x  $6\frac{1}{2}$ " rectangles and one cream  $2\frac{1}{2}$ " square. Join two assorted  $1\frac{1}{2}$ " x  $6\frac{1}{2}$ " rectangles along the long edges. Press. Repeat for a total of two pieced rectangles. Join a pieced rectangle to two opposite sides of the cream  $2\frac{1}{2}$ " square. Press. Repeat for a total of 21 pieced row 4 patchwork units measuring  $2\frac{1}{2}$ " x  $14\frac{1}{2}$ ", including the seam allowances.



Make 21 units,  $2\frac{1}{2}$ " x  $14\frac{1}{2}$ ",  
for row 4.

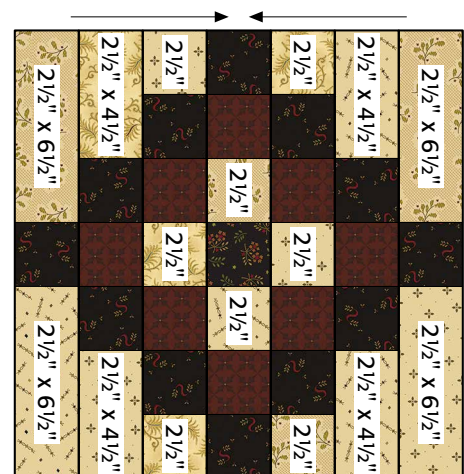
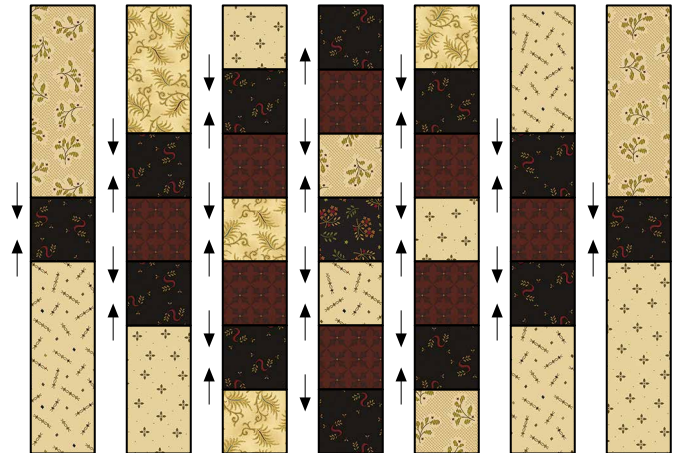
- 6 Lay out two units from step 1, two units from step 2, two units from step 3, and one unit from step 4 in seven horizontal rows as shown. Join the rows. Press. Repeat for a total of 21 pieced A blocks measuring  $14\frac{1}{2}$ " square, including the seam allowances.



Make 21 A blocks,  
 $14\frac{1}{2}$ " x  $14\frac{1}{2}$ ".

## PIECING THE B BLOCKS

- 1 For one B block, select the following pieces:
- 8 squares,  $2\frac{1}{2}$ " x  $2\frac{1}{2}$ ", cut from a single assorted print
  - 12 black serpentine swirls  $2\frac{1}{2}$ " squares
  - 1 black floral sprays  $2\frac{1}{2}$ " square
  - 4 cream  $2\frac{1}{2}$ " x  $6\frac{1}{2}$ " rectangles
  - 4 cream  $2\frac{1}{2}$ " x  $4\frac{1}{2}$ " rectangles
  - 8 cream  $2\frac{1}{2}$ " squares
- 2 Referring to the illustration, lay out the pieces in seven horizontal rows. Join the pieces in each row. Press. Join the rows. Press. The pieced B block should measure  $14\frac{1}{2}$ " square, including the seam allowances.

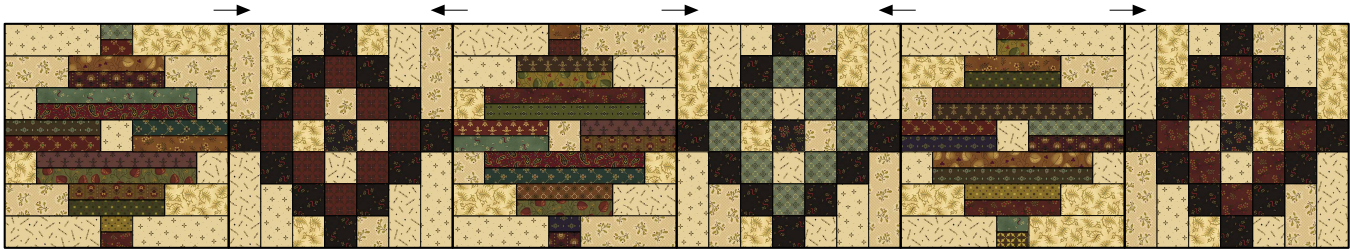


Make 21 B blocks,  
 $14\frac{1}{2}$ " x  $14\frac{1}{2}$ ".

- 3 Repeat steps 1 and 2 for a total of 21 pieced B blocks.

## PIECING THE QUILT CENTER

- 1 Referring to the illustration, lay out three pieced A blocks and three pieced B blocks in alternating positions, turning the B blocks so the row seams are positioned vertically. Join the blocks. Press. Repeat for a total of seven pieced block rows measuring  $14\frac{1}{2}$ " x  $84\frac{1}{2}$ ", including the seam allowances.



Make 7 rows,  
 $14\frac{1}{2}$ " x  $84\frac{1}{2}$ ".

- 2 Using the pictured quilt on the cover page as a guide, lay out the block rows, reversing the direction of every other row so the blocks are resting in alternating positions. Join the rows. Press the seam allowances open. The pieced quilt center should measure  $84\frac{1}{2}$ " x  $98\frac{1}{2}$ ", including the seam allowances.

## PIECING AND ADDING THE BORDER

- 1 Choosing the assorted prints randomly, and selecting a good assortment of the various  $2\frac{1}{2}$ "-wide pieces cut, join enough pieces to make a pieced strip,  $2\frac{1}{2}$ " x 400" long. (This strip doesn't need to be precise in length!) Press the seam allowances open.
- 2 From the strip pieced in step 1, cut four strips measuring  $98\frac{1}{2}$ " in length. Join two  $98\frac{1}{2}$ " strips along the long edges. Press the seam allowances open. Repeat for a total of two pieced border strips measuring  $4\frac{1}{2}$ " x  $98\frac{1}{2}$ ", including the seam allowances. Join these strips to the right and left sides of the quilt center. Press the seam allowances toward the borders.
- 3 Repeat step 1 to make a pieced strip,  $2\frac{1}{2}$ " x 375" long. Cut this pieced strip into four strips measuring  $92\frac{1}{2}$ " in length. Join the strips as instructed in step 2 to make two pieced border strips measuring  $4\frac{1}{2}$ " x  $92\frac{1}{2}$ ", including the seam allowances. Sew these pieced strips to the top and bottom edges of the quilt center to complete the quilt. Press the seam allowances toward the borders.

## COMPLETING THE QUILT

Layer and baste the quilt top, batting, and backing. Quilt the layers. Join the black binding strips to make one length, and use it to bind the quilt.



©2019 Kim Diehl

Every effort has been made to ensure that all projects are error free. All the information is presented in good faith, however no warranty can be given nor results guaranteed as we have no control over the execution of instructions. Therefore, we assume no responsibility for the use of this information or damages that may occur as a result. When errors are brought to our attention, we make every effort to correct and post a revision as soon as possible. Please make sure to check [www.henryglassfabrics.com](http://www.henryglassfabrics.com) for pattern updates prior to starting the project. We also recommend that you test the project prior to cutting for kits. Finally, all free projects are intended to remain free to you and are not for resale or other forms of distribution.



# Wit and Wisdom Fabrics in the Collection



1417-30  
Meandering Leaves-Orange



1417-40  
Meandering Leaves-Gold



1417-66  
Meandering Leaves-Green



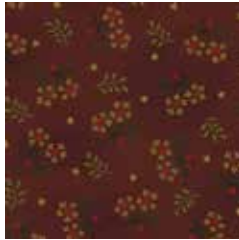
1418-33  
Folk Art Stripe-Chestnut



1418-88  
Folk Art Stripe-Plum



1419-30  
Floral Sprays-Orange



1419-88  
Floral Sprays-Red



1419-99  
Floral Sprays-Black



1420-11  
Diamond Blossoms-Aqua



1420-30  
Diamond Blossoms-Orange



1421-70  
Zigzag Strip-Teal



1421-88  
Zigzag Strip-Red



1422-11  
Serpentine Swirls-Turquoise



1422-99  
Serpentine Swirls-Black



1423-88  
Vintage Paisley-Red



1424-33  
Fleur De Lis-Brown



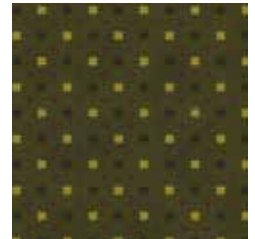
1424-55  
Fleur De Lis-Plum



1424-88  
Fleur De Lis-Red



1425-40  
Stars and Rings-Gold



1425-66  
Stars and Rings-Green



1426-33  
Dotted Diamonds-Brown



1426-66  
Dotted Diamonds-Green



1426-77  
Dotted Diamonds-Navy



1427-33  
Trumpet Flower-Brown



1427-88  
Trumpet Flower-Red



1428-44  
Geometric Petals-Cream



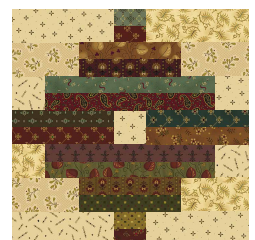
1429-44  
Leaf Clusters-Cream



1430-44  
Egg and Dart Squiggles-Cream



1431-44  
Sawtooth Leaves-Cream



1432-44  
Patchwork-Cream