



Florella

Quilt 1
by Denise Russell



Quilt size: 82" x 99"

Skill Level: Advanced Beginner

Blank Quilting Corporation
49 West 37th Street ♦ New York, NY 10018
Tel: 800-294-9495 ♦ Fax: 212-679-4578
www.blankquilting.net

facebook

Free Project
NOT FOR RESALE

Florella - Fabrics in the Collection



9343-90 Large Floral
Gray



9343-99 Large Floral
Black



9344-88 Daisies Bordeaux



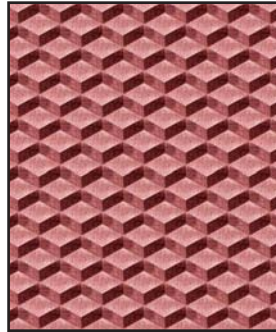
9344-99 Daisies Black



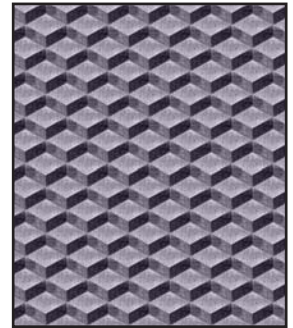
9345-22 Paisley Pink



9345-90 Paisley Gray



9346-22 Geometric Pink



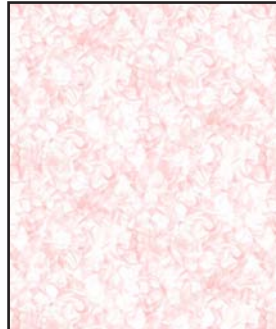
9346-90 Geometric Gray



9347-01 Tulips White



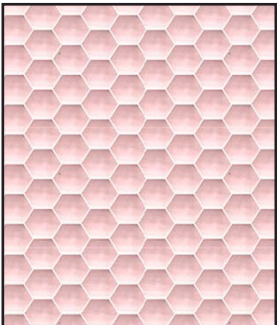
9347-99 Tulips Black



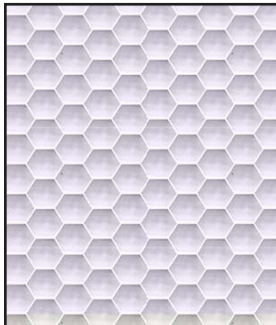
9349-22 Petal Texture
Pink



9349-90 Petal Texture
Gray



9350-22 Tonal Honeycomb
Pink



9350-90 Tonal Honeycomb
Gray



9348-95 Stripe Gray

Florella - Quilt 1

Page 1

Materials

Yardages and cutting instructions are based on 42" of usable fabric width

1/4 yard 9346-90 Geometric Gray
3/8 yard 9346-22 Geometric Pink
1/2 yard 9343-99 Large Floral Black
1/2 yard 9345-22 Paisley Pink
1/2 yard 9347-99 Tulips Black
5/8 yard 9350-22 Tonal Honeycomb Pink
3/4 yard 9344-88 Daisies Bordeaux (binding)
7/8 yard 9344-99 Daisies Black
1-3/4 yards 9347-01 Tulips White (blocks and border)
2-1/3 yards 9349-90 Petal Texture Gray
5-1/4 yards 9348-95 Stripe Gray (border)
6-7/8 yards 9343-90 Large Floral Gray for backing
90" x 107" piece of batting
Plastic or cardboard for template

Cut Fabrics

Note: All strips are cut across the width of the fabric (WOF) from selvage to selvage unless otherwise noted.

From 9346-90 Geometric Gray:

*To be cut with templates A and B.

From 9346-22 Geometric Pink:

*Cut one (2" x WOF) strip. Sub-cut fifteen 2" squares.
*Cut one (3-3/8" x WOF) strip.
*Remaining fabric will be cut with templates A and B.

From 9343-99 Large Floral Black:

*Cut one (6-1/2" x WOF) strip. Sub-cut six 6-1/2" squares.
*Remaining fabric will be cut with templates A and B.

From 9345-22 Paisley Pink:

*Cut one (6-1/2" x WOF) strip. Sub-cut five 6-1/2" squares.
*Remaining fabric will be cut with templates A and B.

From 9347-99 Tulips Black:

*Cut one (6-1/2" x WOF) strip. Sub-cut five 6-1/2" squares.
*Remaining fabric will be cut with templates A and B.

From 9350-22 Tonal Honeycomb Pink:

*Cut four (3-3/8" x WOF) strips.
*Remaining fabric will be cut with templates A and B.

From 9344-88 Daisies Bordeaux:

*Cut ten (2-1/2" x WOF) strips for binding.

From 9344-99 Daisies Black:

*Cut one (2" x WOF) strip. Sub-cut five 2" squares.
*Cut four (3-3/8" x WOF) strips.
*Cut one (6-1/2" x WOF) strip. Sub-cut four 6-1/2" squares.
*Remaining fabric will be cut with templates A and B.

From 9347-01 Tulips White:

*Cut eight (1-1/2" x WOF) strips for inner border.
*Cut one (9-3/4" x WOF) strip. Sub-cut two 9-3/4" squares. Cut once diagonally (corner triangles).
*Cut two (19" x WOF) strips. Sub-cut four 19" squares. Cut twice diagonally (side triangles).

From 9349-90 Petal Texture Gray:

*Cut one (2" x WOF) strips. Sub-cut twenty 2" squares.
*Cut one (2-1/2" x WOF) strip. Sub-cut twenty 2" x 2-1/2" rectangles.
*Cut five (3-1/2" x WOF) strips. Sub-cut sixty 3-1/2" squares.
*Cut four (6-7/8" x WOF) strips. Sub-cut twenty-four squares. Cut once diagonally. (A)
*Remaining fabric will be cut with templates A and B.

From 9348-95 Stripe Gray:

*Cut the needed repeat into 6-1/2" x LOF strips.

Assemble Blocks

Measurements include 1/4" seam allowances. Sew with right sides together unless otherwise stated. If no direction is specified, press seam toward darker fabric.

1. Make a strip set by sewing together two Daisies Black 3-3/8" strips with one 3-3/8" Tonal Honeycomb Pink strip in between. Press seams toward middle strip. Repeat to make another strip set. Cut strip sets into 3-3/8" sections. Make 24 units. (Figure 1).

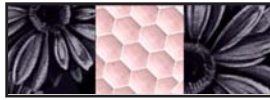


Figure 1

2. Repeat step 1 with two 3-3/8" strips of Tonal Honeycomb Pink and one 3-3/8" strip of Geometric Pink in the middle. Press seams away from middle strip. Cut 12 3-3/8" units. (Figure 2).

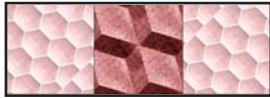


Figure 2

3. Assemble the 9-patches by sewing one unit from step 1 to the top and one to the bottom of a unit from step 2. Patch measures 9-1/4". (Figure 3). Make 12.



Figure 3

4. Sew two Petal Texture Gray triangles A to two opposing sides of one 9-patch from step 3. Press open. Sew two more Petal Texture Gray triangles A to the other two sides of the same unit. Press seams toward triangle. Repeat with remaining 9-patches to make twelve 12-1/2" blocks. (Figure 4).

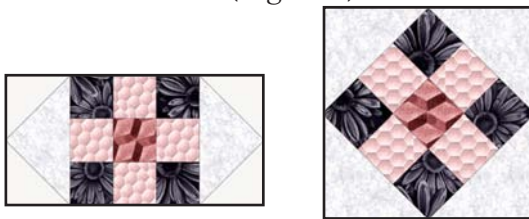


Figure 4

5. Sew a Geometric Pink 2" square to a Petal Texture Gray 2" square. Sew this patch to a 2" x 2-1/2" Petal Texture Gray rectangle. (Figure 5). Repeat to make 15 units.

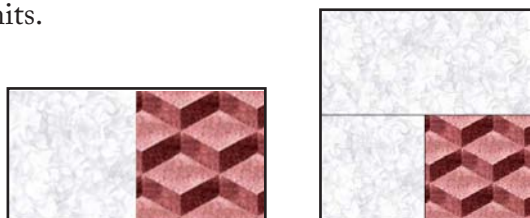


Figure 5

6. Repeat step 5 with the Daisies Black 2" squares, the remaining Petal Texture Gray 2" squares, and the 2" x 2-1/2" Petal Texture Gray rectangles. Make 5 units.

7. Trace templates onto plastic or cardboard. Cut them on the outline and label them "A - right side" and "B - right side". **Templates are placed on the right side of the fabrics for tracing and cutting.** Keep same fabrics grouped together to facilitate block construction.

8. Using **template A** and the Petal Texture Gray fabric, trace and cut 20 triangles to be used as the background on the left side of the tulip blocks. Cut each triangle on the outline with a rotary cutter or sharp scissors. Then, using **template B**, cut 60 triangles to be used as background on the top, on the bottom, and on the right side rectangles of the blocks.

9. Using **template B** and the Tonal Honeycomb Pink fabric, trace template on the right side of the fabric 22 times to cut the 'leaves' for 11 tulip blocks. Repeat with the following fabrics to cut the remaining leaves:

- Geometric Pink: cut 8 triangles.
- Geometric Gray: cut 10 triangles.

10. Using the Petal Texture Gray triangles from step 8 and the leaves triangles from step 9, sew rectangles together as shown below. (Figure 6). There will be 40 Petal Texture Gray left.



Figure 6

11. Cut the petals using **templates A** (left side petal) **and B** (right side petal) and the remainder of the fabrics below:

- Large Floral Black: cut 6 A and 6 B triangles.
- Tulips Black: cut 5 A and 5 B triangles.
- Daisies Black: cut 4 A and 4 B triangles.
- Paisley Pink: cut 5 A and 5 B triangles.

12. Using the remaining Petal Texture Gray triangles from step 10 and the triangles from step 11, sew rectangles together as shown on the next page. (Figure 7).



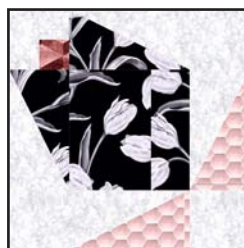
Figure 7

13. Noticing patch orientation, assemble tulip blocks row by row as follows:

- Row 1: one unit from step 5, one unit from step 12, one Petal Texture Gray 3-1/2" square.
- Row 2: one matching petal from step 12, one matching 6-1/2" square, one leaf from step 10.
- Row 3: one Petal Texture Gray 3-1/2" square, one matching leaf from step 10, one Petal Texture Gray 3-1/2" square.



Make 6



Make 5



Make 4



Make 5

Assemble Quilt Top

14. Following the quilt diagram and photograph as reference, lay out eight diagonal rows of blocks as well as the Tulips White side triangles at the beginning and at the end of each row. Sew the side triangles and blocks together in each row. Press seams in alternate directions for adjacent rows.

15. Sew a Tulips White corner triangle to the four corner blocks.

16. For the inner border, sew together the eight Tulips White 1-1/2" strips end to end using diagonal seams. Stitch a border strip to each side of the quilt center and trim the extra length. Press seams toward the border. In the same manner, stitch one border to the top

and another to the bottom. Quilt will measure approx. 67.8" x 84.8".

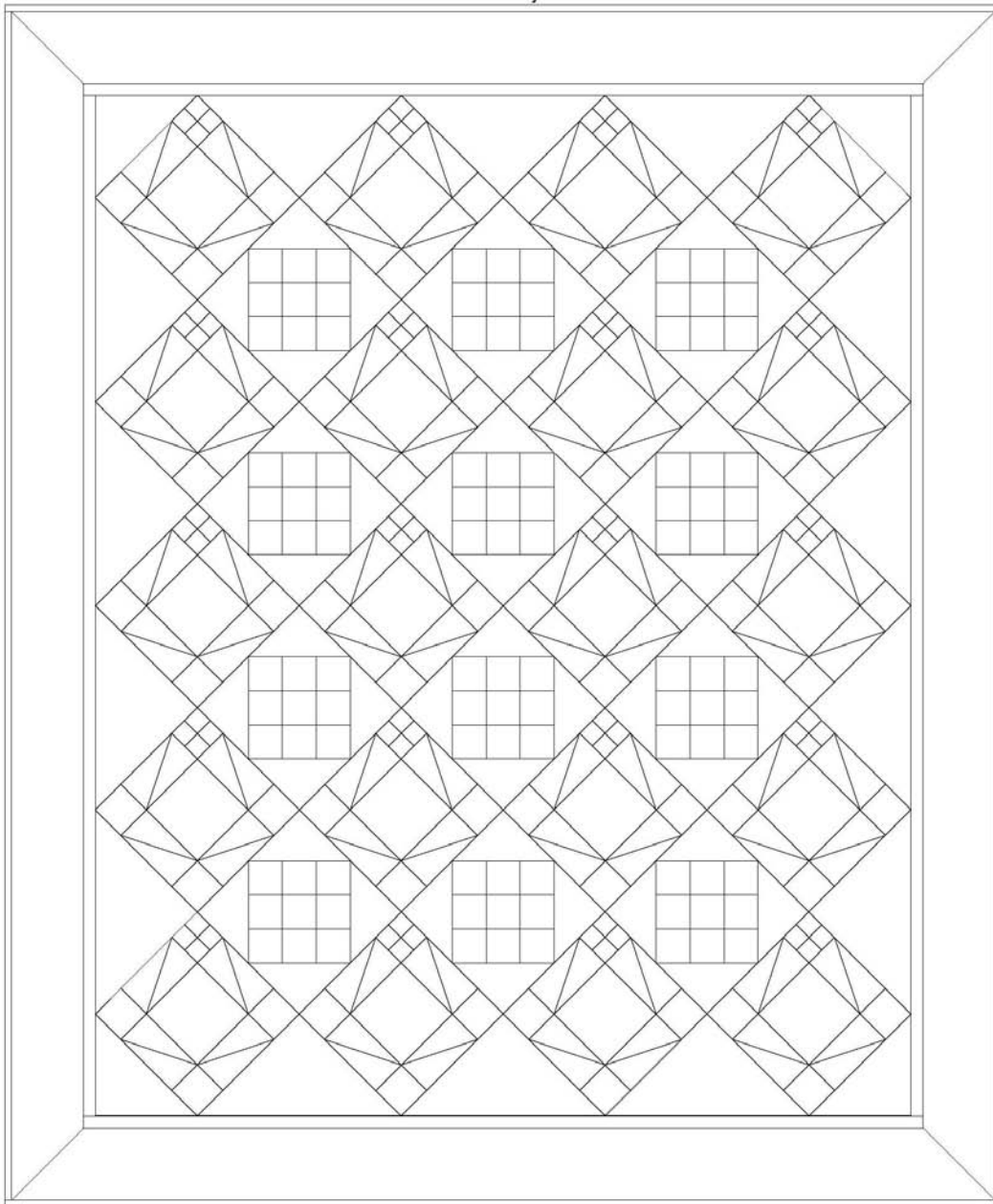
17. For the outer border, cut the 6-1/2"-wide sections featured on the quilt photograph from the Stripe Gray along the length of the fabric (LOF). From each repeat length cut one 103" strip (sides) and one 86" strip (top/bottom). Mark the quilt center along the sides, top, and bottom. Mark the center of each border strip. Matching the centers, sew each border strip in place beginning and ending exactly 1/4" from the corners. DO NOT trim the extra length.

18. To miter the borders, fold one corner of the quilt on a 45° angle so that the border strips are directly on top of one another and the seams nest together. Place rotary ruler on the fold of the quilt so that the long edge is against the fold and the 45° line is on the side of the seam. Draw a line from the corner of the quilt top to the outside edge of the border. Pin the borders together. Position your needle on the inside corner where the border meets the quilt. Stitch directly on the line you have drawn to the outside edge of the border. Trim the excess fabric leaving a 1/4" seam allowance. Press. Repeat the process for the remaining three corners of the quilt.

Finishing

19. Create a quilt sandwich with the batting between the quilt top and the backing. Pin or baste layers together, mark quilting design, and quilt by hand or machine. When quilting is complete, remove pins or basting, trim batting and backing even with raw edges of the quilt top.

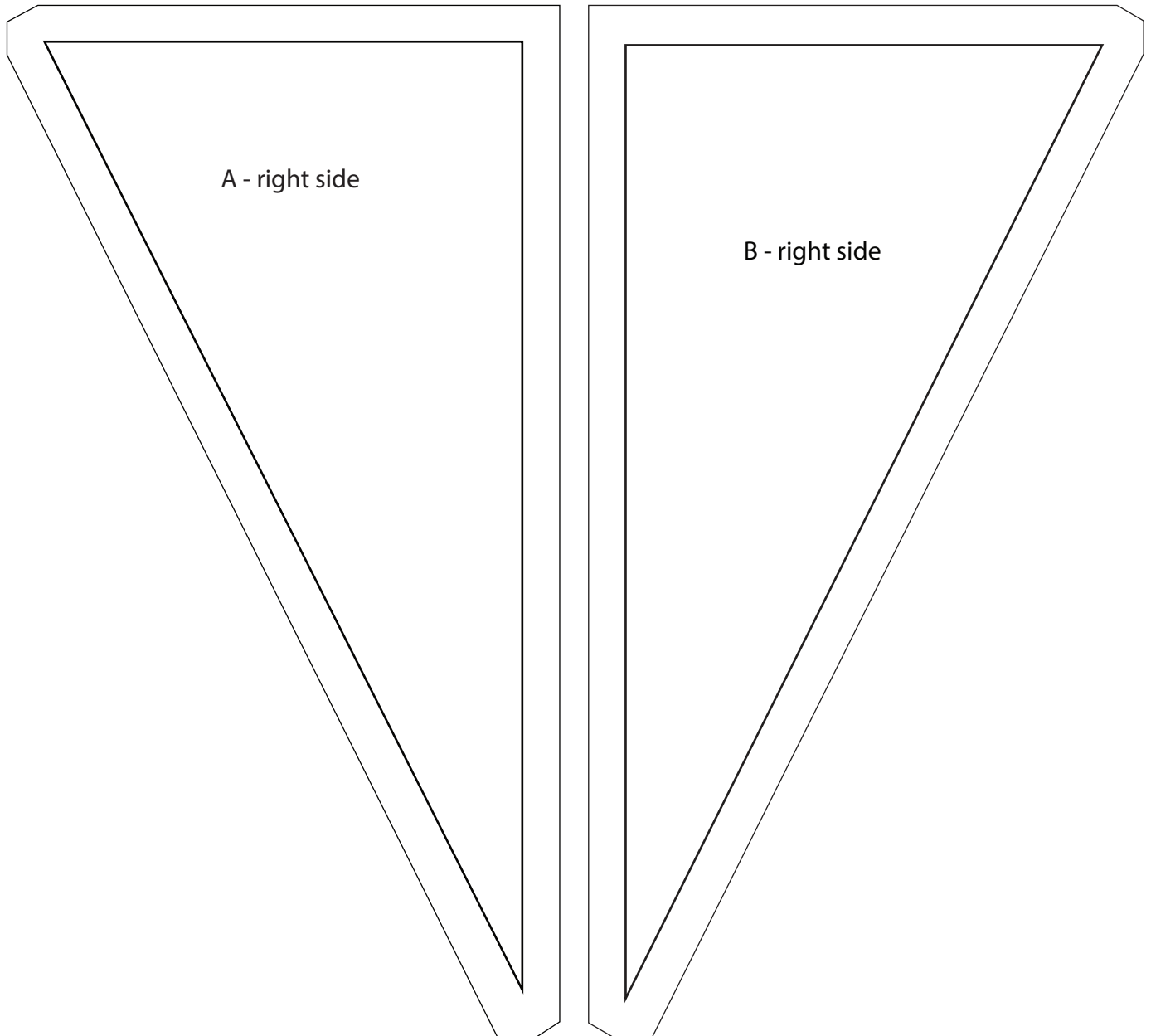
20. Join the ten Daisies Bordeaux 2-1/2" binding strips together end to end using a diagonal seam to make one long strip. Trim seams to 1/4" and press them open. Sew binding to the edges of the quilt top, mitering corners, and overlapping ends. Fold binding to the back of the quilt and stitch it in place by hand to finish.



Quilt Diagram

©2018 Blank Quilting Corporation

Every effort has been made to ensure that all projects are error free. All the information is presented in good faith; however, no warranty can be given nor results guaranteed as we have no control over the execution of instructions. Therefore, we assume no responsibility for the use of this information or damages that may occur as a result. When errors are brought to our attention, we make every effort to correct and post a revision as soon as possible. Please make sure to check www.blankquilting.net for pattern updates prior to starting the project. We also recommend that you test the project prior to cutting for kits. Finally, all free projects are intended to remain free to you and are not for resale.



©2018 Blank Quilting Corporation

Every effort has been made to ensure that all projects are error free. All the information is presented in good faith; however, no warranty can be given nor results guaranteed as we have no control over the execution of instructions. Therefore, we assume no responsibility for the use of this information or damages that may occur as a result. When errors are brought to our attention, we make every effort to correct and post a revision as soon as possible. Please make sure to check www.blankquilting.net for pattern updates prior to starting the project. We also recommend that you test the project prior to cutting for kits. Finally, all free projects are intended to remain free to you and are not for resale.