



Country Paradise

Quilt 2
by Denise Russell



Quilt size: 52-1/2" x 75-1/2"

Skill Level: Advanced Beginner

Blank Quilting Corporation
49 West 37th Street ♦ New York, NY 10018
Tel: 800-294-9495 ♦ Fax: 212-679-4578
www.blankquilting.net

facebook

Free Project
NOT FOR RESALE

Country Paradise - Fabrics in the Collection



9353P-88 Sunflower Panel
Yellow



9352P-88 Red Truck Panel
Red



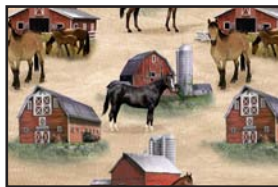
9354-39 Blocks-Brown



9355-66 Tossed Barns
Green



9356-35 Country Signs
Tan



9357-41 Horses-Ecru



9358-44 Sunflowers
Yellow



9359-88 Chickens-Red



9360-99 Tossed Trucks
Black

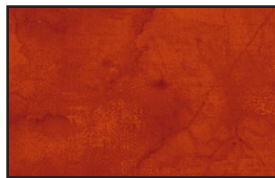


9361-66 Scenic Allover
Green



9362-39 Stripe-Brown

Selected Fabrics from
Urban Legend
by Tana Mueller



7101-33 Texture-Terra



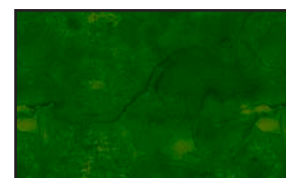
7101-37 Texture-Chocolate



7101-41 Texture-Ecru



7101-45 Texture-Gold



7101-66 Texture-Hunter

Materials

Yardages and cutting instructions are based on 42" of usable fabric width

1/8 yard 9359-88 Chickens-Red
1/8 yard 9356-35 Country Signs-Tan
1/4 yard 7101-33 Texture-Terra
1/4 yard 7101-66 Texture-Hunter
1/2 yard 7101-45 Texture-Gold
3/4 yard 9354-39 Blocks-Brown
3/4 yard 9361-66 Scenic Allover-Green
5/8 yard 7101-37 Texture-Chocolate (cornerstones and binding)
7/8 yard 9358-44 Sunflowers-Yellow (border)
1-5/8 yards 7101-41 Texture-Ecru (blocks, sashing, and border)
3-5/8 yards 9355-66 Tossed Barns-Green for backing
61" x 84" piece of batting

Cut Fabrics

Note: All strips are cut across the width of the fabric (WOF) from selvage to selvage unless otherwise noted.

From 9359-88 Chickens-Red:

*Cut one (3-7/8" x WOF) strip. Sub-cut six 3-7/8" squares.

From 9356-35 Country Signs-Tan:

*Cut one (3-7/8" x WOF) strip. Sub-cut six 3-7/8" squares.

From 7101-33 Texture-Terra:

*Cut two (2-1/8" x WOF) strips.

From 7101-66 Texture-Hunter:

*Cut two (2-1/8" x WOF) strips.

From 7101-45 Texture-Gold:

*Cut six (2-1/2" x WOF) strips. Sub-cut ninety-six 2-1/2" squares. Cut once diagonally.

From 9354-39 Blocks-Brown:

*Trim blocks down to eight 10-1/2" squares.

From 9361-66 Scenic Allover-Green:

*Fussy cut four 10-1/2" squares.

From 7101-37 Texture-Chocolate:

*Cut one (2" x WOF) strip. Sub-cut fifteen 2" squares for cornerstones.

*Cut seven (2-1/2" x WOF) strips for binding.

From 9358-44 Sunflowers-Yellow:

*Cut six (3-1/2" x WOF) strips for wide border.

From 7101-41 Texture-Ecru:

*Cut six (2-1/8" x WOF) strips.

*Cut four (2-7/8" x WOF) strips. Sub-cut forty-eight 2-7/8" squares.

*Cut two (10-1/2" x WOF) strips. Sub-cut thirty-eight 2" x 10-1/2" rectangles for sashing.

*Cut six (1-1/2" x WOF) strips for inner border.

Assemble Blocks

Measurements include 1/4" seam allowances. Sew with right sides together unless otherwise stated. If no direction is specified, press seam toward darker fabric.

1. Make a strip set by sewing a 2-1/8" Texture-Terra strip to a 2-1/8" Texture-Ecru strip. Do not press yet. Make two more strip sets with the Texture-Terra and Texture-Ecru. Cut strips into twenty-four 3-7/8" sections. Press open. Rectangles will measure 3-3/4" x 3-7/8". (Figure 1)



Figure 1

2. Sew two Texture-Gold triangles to two opposing sides of a Texture-Ecru 2-7/8" square. Trim and press open. Sew two more Texture-Gold triangles to the remaining sides of the same square. Trim ears and press open. Repeat to make forty-eight 3-3/4" diamond in the square blocks (Use 24 patches for the red and 24 for the green blocks). (Figure 2).



Figure 2

3. Noticing patch orientation, sew one patch from step 1 to the right and one to the left side of a Chickens-Red 3-7/8" square. Press seams toward center. Repeat to make six block center rows. (Figure 3).



Figure 3

4. Noticing patch orientation, sew two patches from step 2 and one patch from step 1 to make the top of the block. Repeat to make the bottom of the block. (Figure 4). Repeat to make 12 units.



Figure 4

5. Assemble block by sewing one unit from step 3 to two units from step 4. Make 6 blocks. (Figure 5).



Figure 5

6. Repeat steps 1 - 5 using the Texture-Ecru and Texture-Hunter 2-1/8" strips on step 1 and the Country Signs-Tan 2-7/8" squares on step 3. Make 6 blocks. (Figure 6).



Figure 6

Assemble Quilt Top

7. Following the quilt photo for block placement, lay out the Blocks-Brown 10-1/2" blocks, the Sce-

nic Allover-Green 10-1/2" blocks, and Texture-Ecru 2" x 12-1/2" sashing rectangles into six rows as shown. Sew the blocks and sashing strips together in each row. Press seams toward the blocks.

8. To make the horizontal sashing rows, alternately sew together four Texture-Ecru 2" x 12-1/2" sashing rectangles and three Texture-Chocolate 2" squares. Repeat to make a total of five sashing strips. Press seams toward the cornerstones.

9. Sew the block rows together with a sashing strip in between, matching adjacent seams. Press seams in one direction.

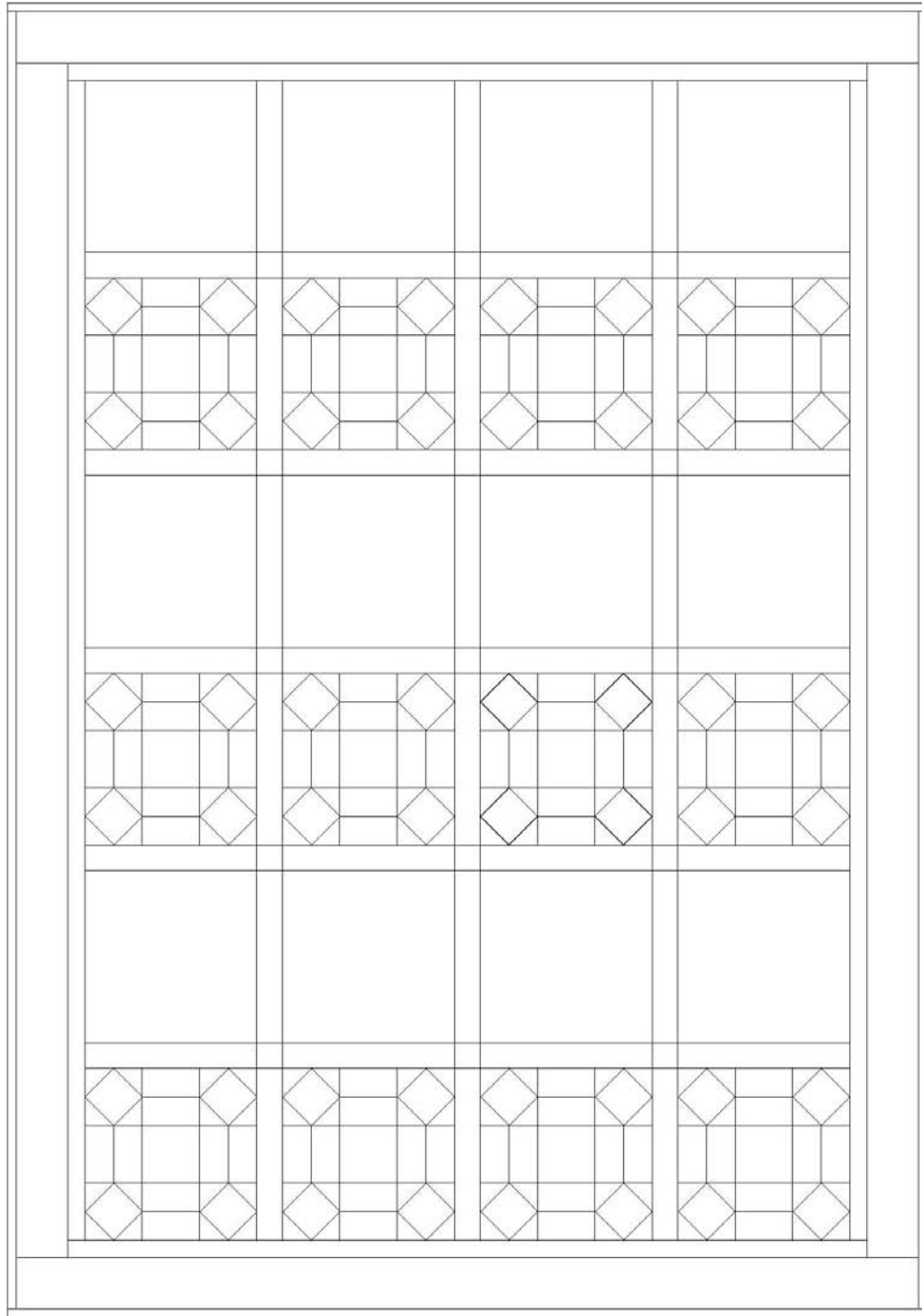
10. For the inner border, sew together the six Texture-Ecru 1-1/2" strips end to end using diagonal seams. Stitch a border strip to each side of the quilt center and trim the extra length. Press seams toward the border. In the same manner, stitch one border to the top and another to the bottom.

11. For the outer border, repeat step 10 using the six Sunflowers-Yellow 3-1/2" strips.

Finishing

12. Create a quilt sandwich with the batting between the quilt top and the backing. Pin or baste layers together, mark quilting design, and quilt by hand or machine. When quilting is complete, remove pins or basting, trim batting and backing even with raw edges of the quilt top.

13. Join the seven Texture-Chocolate 2-1/2" binding strips together end to end using a diagonal seam to make one long strip. Trim seams to 1/4" and press them open. Sew binding to the edges of the quilt top, mitering corners and overlapping ends. Fold binding to the back of the quilt and stitch it in place by hand to finish.



Quilt Diagram

©2018 Blank Quilting Corporation

Every effort has been made to ensure that all projects are error free. All the information is presented in good faith; however, no warranty can be given nor results guaranteed as we have no control over the execution of instructions. Therefore, we assume no responsibility for the use of this information or damages that may occur as a result. When errors are brought to our attention, we make every effort to correct and post a revision as soon as possible. Please make sure to check www.blankquilting.net for pattern updates prior to starting the project. We also recommend that you test the project prior to cutting for kits. Finally, all free projects are intended to remain free to you and are not for resale.