

Humming Along *By Nancy Mink*

Throw Quilt: 47" x 66"



Humming Along

Please read all instructions carefully AND identify all fabrics before beginning.
All instructions include a 1/4" seam allowance and strips are cut selvage to selvage, unless stated otherwise.

1. Cut the following:

Fabric A - PLEASE NOTE: Panels do not always print the size intended. For this pattern, the panel has a coping border added then trimmed so the panel will fit the quilt correctly.

Fussy cut 1/4" beyond outside edges of panel to approximately 23" x 42"

Fabric B - Referring to the quilt image, fussy cut strips, the length of fabric parallel to selvage: (2) 3-1/4" x 46" diamond stripe, (2) 3-1/4" x 32-1/2" diamond stripe, and (2) 6" x 36-1/2" plant stripe borders.
Cut (8) 6" squares with plants centered

Fabric C - Cut (2) 3" strips, subcut (16) 3" squares

Fabric D - Cut (3) 2" strips, subcut (32) 2" x 3" pieces

Fabric E - Cut (6) 2-1/2" strips (binding)
Cut (3) 2" strips, subcut (32) 2" x 3" pieces

Fabric F - Cut (4) 3" strips, subcut (2) 3" x 28-1/2" strips
Cut (3) 2-1/2" strips, sewn together end to end and cut into (2) 2-1/2" x 51-1/2" borders
Cut (2) 2-1/2" strips, subcut (2) 2-1/2" x 36-1/2" borders and (4) 2" squares
Cut (3) 2" strips, subcut (60) 2" squares

2. Piecing Order:

1. Arrange 1 **Fabric C** 3" square, 4 **Fabric F** 2" squares, and 2 each **Fabrics D** and **E** 2" x 3" pieces in 3 rows. Stitch into rows. Sew rows together. Make a total of 16 blocks (6" square unfinished).



2. Refer to Quilt Layout (Page 2) for arrangement and placement of blocks, panel, strips, squares, and borders.

3. Stitch **Fabric F** 3" x width of fabric strips to sides of the **Fabric A** panel. Trim strip ends even. Add 3" x 28-1/2" **Fabric F** strips to top and bottom of panel. **Trim bordered panel to 27" x 46" (unfinished).**

4. Sew **Fabric B** 3-1/4" x 46" diamond borders to right and left sides of bordered panel. Add **Fabric B** 3-1/4" x 32-1/2" diamond borders to top and bottom of bordered panel.

5. Sew **Fabric F** 2-1/2" x 51-1/2" borders to right and left sides of quilt. Add **Fabric F** 2-1/2" x 36-1/2" borders to top and bottom of quilt to complete quilt center (36-1/2" x 55-1/2" unfinished).

6. Arrange 6 blocks and 4 **Fabric B** 6" squares in vertical rows on right and left sides of quilt center. Stitch into vertical borders (6" x 55-1/2" unfinished) and add to sides of quilt center.

7. Sew a block to short ends of both **Fabric B** 6" x 36-1/2" borders then add to top and bottom of quilt center.

8. The quilt measures approximately 47-1/2" x 66-1/2" (unfinished). Make backing (**Fabric G**) approximately 8" larger than the top.

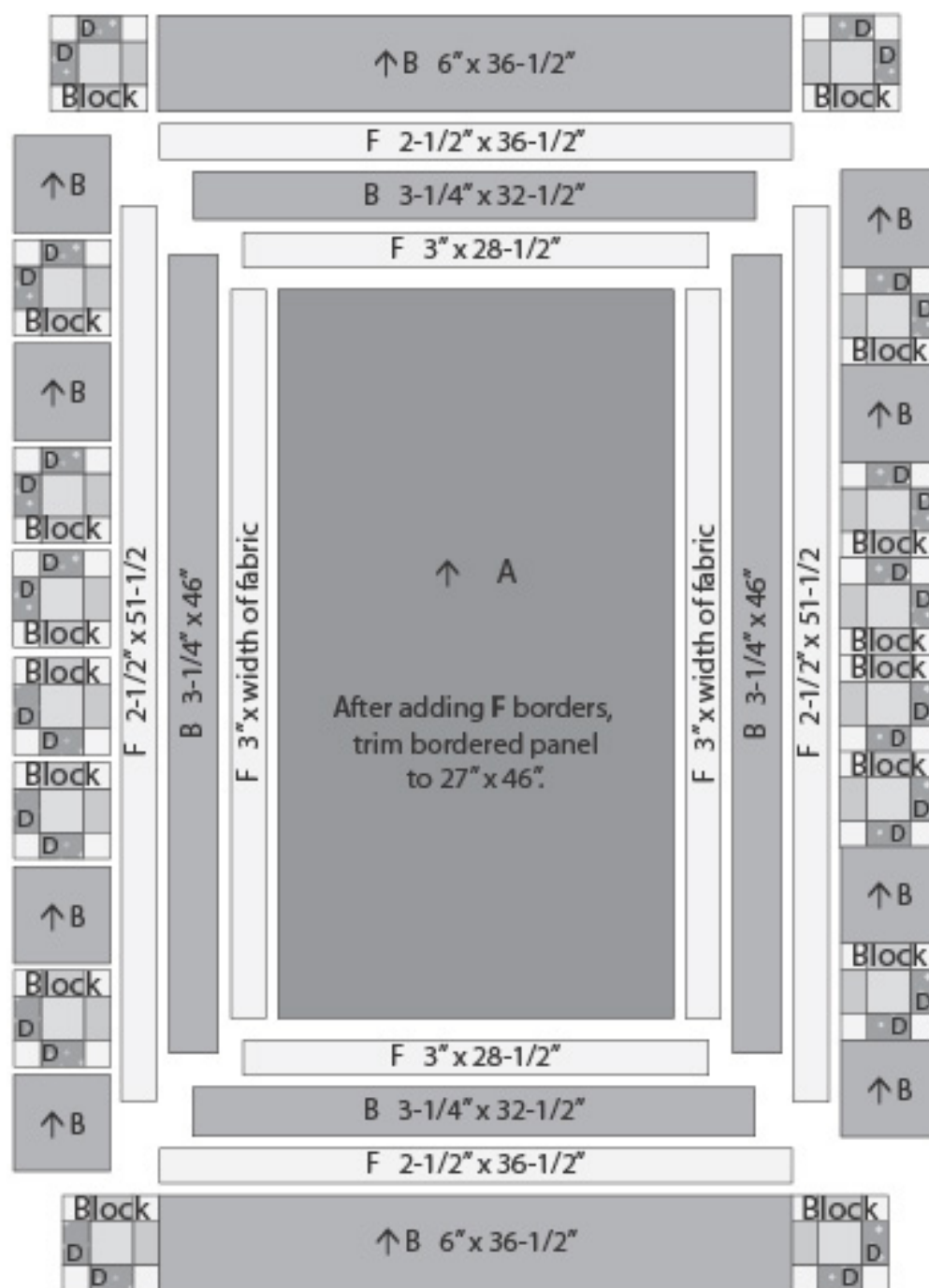
9. Layer and baste top, batting, and backing together. Quilt as desired. Attach binding (**Fabric E**) and enjoy!!

Humming Along

QUILT LAYOUT

Border measurements are the cut size.

Arrows indicate orientation of directional prints.



Humming Along *By Nancy Mink*



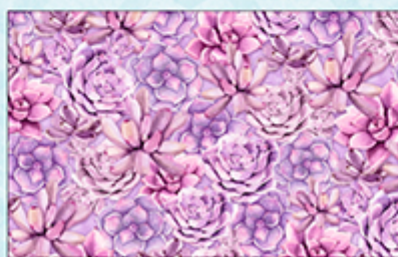
Fabric A
1665-33828-473
2/3 yd. (1 Panel)



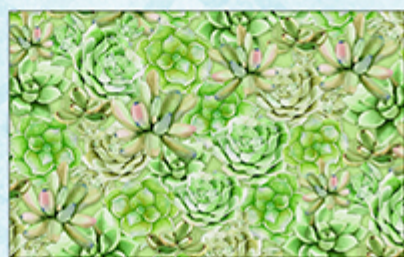
Fabric B
1665-33829-427
1 1/2 yds.



Fabric C
1665-33831-643
1/4 yd. (FQ)



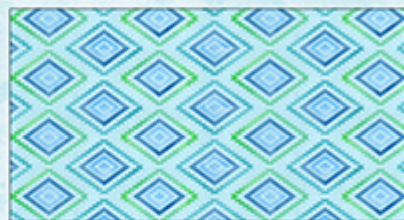
Fabric D
1665-33832-663
1/4 yd. (FQ)



Fabric E
1665-33832-773
7/8 yd.
(incl. binding)

Essentials white on white

Fabric F
1817-39097-100
1 1/4 yds.



Fabric G
1665-33836-474
3 1/4 yds.
(backing only)