

Lewis & Irene

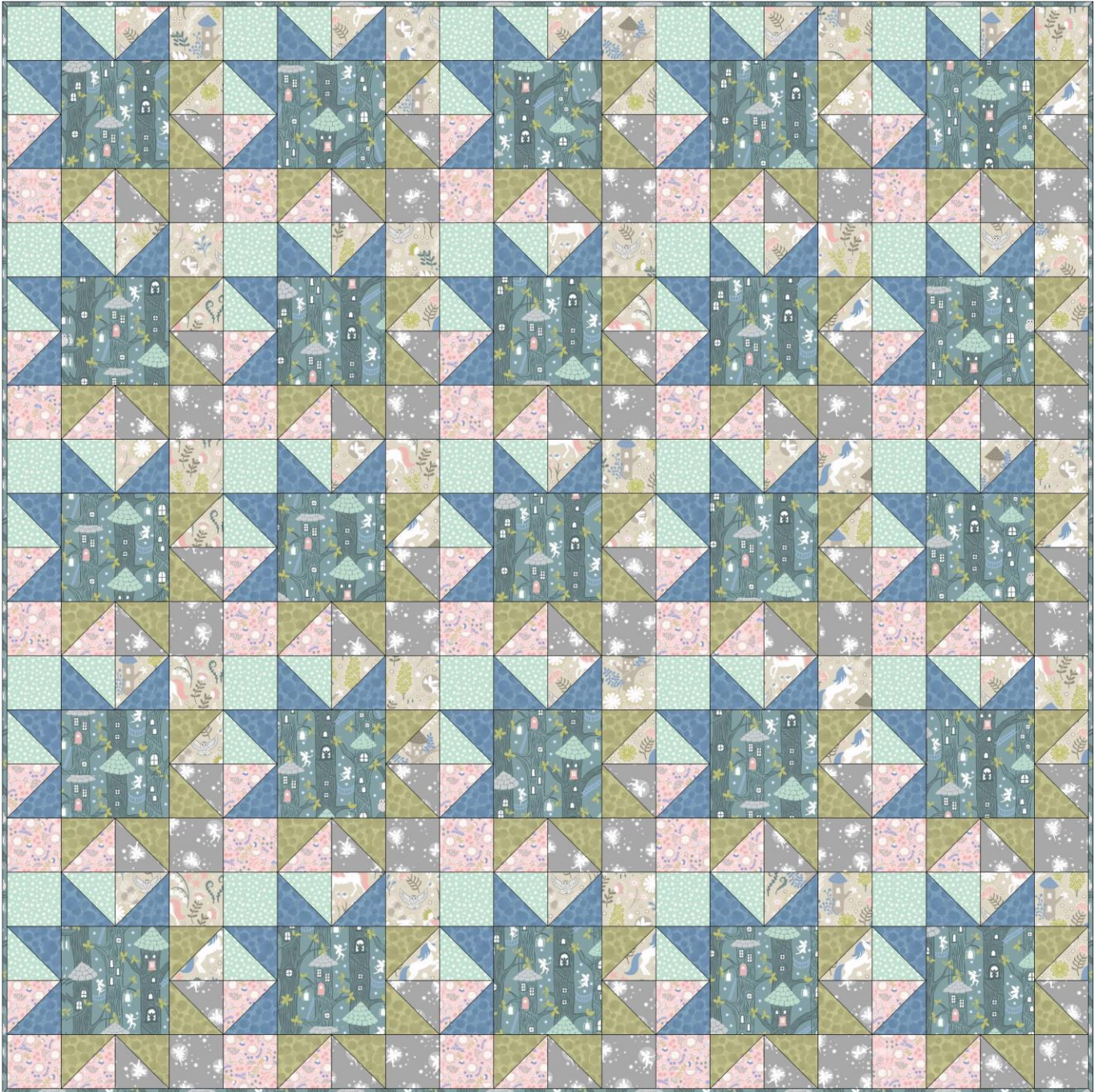
threaded with love

Fairy Lights Quilt

Designed and made by Sally Ablett

Quilt Size: 60" x 60"

Block Size: 12½" x 12½"



DESIGN 1 (Main Diagram)

FABRIC REQUIREMENTS (Fairy Lights Collection)

Fabric 1: 1⅛yd - 1.10mtr - A306.3 (Fairy houses dusk)

Fabric 2: ⅝yd - 70cm - A307.1 (Glow sparkles mist)

Fabric 3: ⅝yd - 70cm - A308.1 (Unicorn forest natural)

Fabric 4: ⅝yd - 70cm - A309.3 (Fairies on grey)

Fabric 5: ⅝yd - 70cm - A310.1 (Magical flowers on pink)

Fabric 6: ⅝yd - 70cm - BB153 (Orchard)

Fabric 7: ⅝yd - 70cm - BB160 (Dorset blue)

Wadding and backing 64" x 64"

All measurements include ¼" seam allowances; press each seam as you go

CUTTING

- 1.** From fabric 1 cut:
(25x) 6½" x 6½" block centres
- 2.** From fabric 2 cut:
(25x) 3⅞" x 3⅞" cut in half diagonally once
(25x) 3½" x 3½" block corners
- 3.** From fabric 3 cut:
(25x) 3⅞" x 3⅞" cut in half diagonally once
(25x) 3½" x 3½" block corners
- 4.** From fabric 4 cut:
(25x) 3⅞" x 3⅞" cut in half diagonally once
(25x) 3½" x 3½" block corners
- 5.** From fabric 5 cut:
(25x) 3⅞" x 3⅞" cut in half diagonally once
(25x) 3½" x 3½" block corners
- 6.** From fabric 6 cut:
(50x) 3⅞" x 3⅞" cut in half diagonally once
- 7.** From fabric 7 cut:
(50x) 3⅞" x 3⅞" cut in half diagonally once

MAKING UP THE BLOCK

Lay out the fabric pieces for each block as in Figure 1



Figure 1

Sew the pairs of triangles together to make triangle units as in Figure 2. Repeat for all the triangles



Figure 2

Sew pairs of triangle units together as in Figure 3



Figure 3

Sew the top row of each block together as in Figure 4



Figure 4

Sew the middle row of each block together as in Figure 5



Figure 5

Sew the bottom row together as in Figure 6



Figure 6

Stitch all three rows together to make each block. Make 25 blocks in total

Lay out the blocks and sew them together in rows. Sew the rows together to complete the quilt top

Quilting

Sandwich quilt top, wadding and backing together. Quilt by hand or machine as desired

Trim backing and wadding to size

Binding

Use your favourite method from fabric 1 to bind the quilt

Lewis & Irene

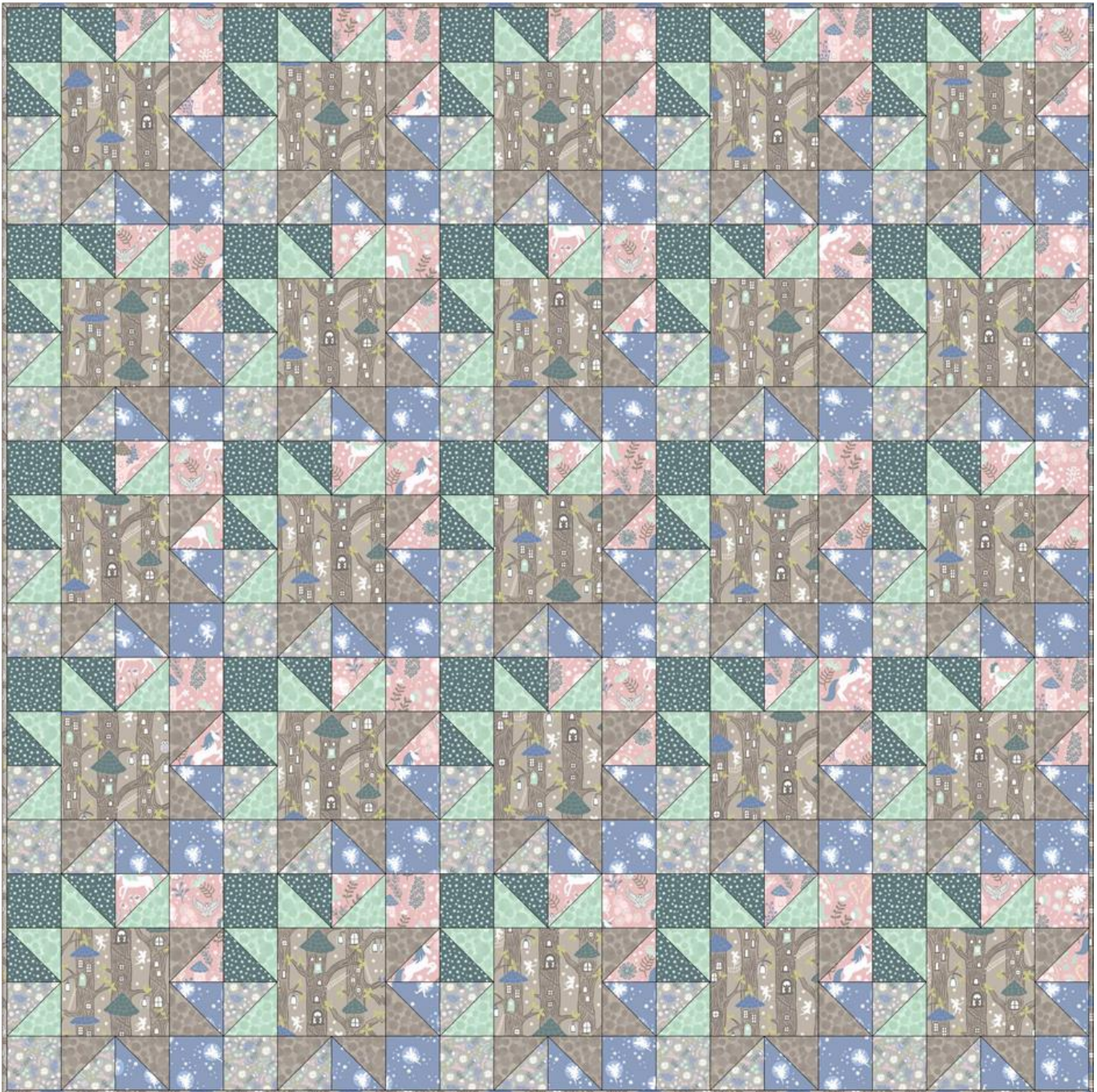
threaded with love

Fairy Lights Quilt

Designed and made by Sally Ablett

Quilt Size: 60" x 60"

Block Size: 12½" x 12½"



DESIGN 2 (Main Diagram)

FABRIC REQUIREMENTS (Fairy Lights Collection)

Fabric 1: 1½yd - 1.10mtr - A306.2 (Fairy houses natural)

Fabric 2: ⅝yd - 70cm - A307.3 (Glow sparkles midnight)

Fabric 3: ⅝yd - 70cm - A308.2 (Unicorn forest pink)

Fabric 4: ⅝yd - 70cm - A309.1 (Fairies on warm lavender)

Fabric 5: ⅝yd - 70cm - A310.2 (Magical flowers on grey)

Fabric 6: ⅝yd - 70cm - BB164 (Hazelwood)

Fabric 7: ⅝yd - 70cm - BB152 (Minty)

Wadding and backing 64" x 64"

All measurements include ¼" seam allowances; press each seam as you go

CUTTING

- 1.** From fabric 1 cut:
(25x) 6½" x 6½" block centres
- 2.** From fabric 2 cut:
(25x) 3⅞" x 3⅞" cut in half diagonally once
(25x) 3½" x 3½" block corners
- 3.** From fabric 3 cut:
(25x) 3⅞" x 3⅞" cut in half diagonally once
(25x) 3½" x 3½" block corners
- 4.** From fabric 4 cut:
(25x) 3⅞" x 3⅞" cut in half diagonally once
(25x) 3½" x 3½" block corners
- 5.** From fabric 5 cut:
(25x) 3⅞" x 3⅞" cut in half diagonally once
(25x) 3½" x 3½" block corners
- 6.** From fabric 6 cut:
(50x) 3⅞" x 3⅞" cut in half diagonally once
- 7.** From fabric 7 cut:
(50x) 3⅞" x 3⅞" cut in half diagonally once

MAKING UP THE BLOCK

Lay out the fabric pieces for each block as in Figure 1



Figure 1

Sew the pairs of triangles together to make triangle units as in Figure 2. Repeat for all the triangles

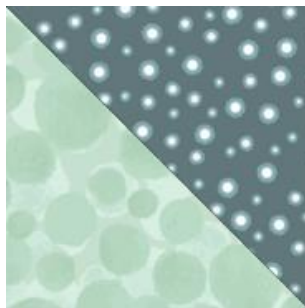


Figure 2

Sew pairs of triangle units together as in Figure 3

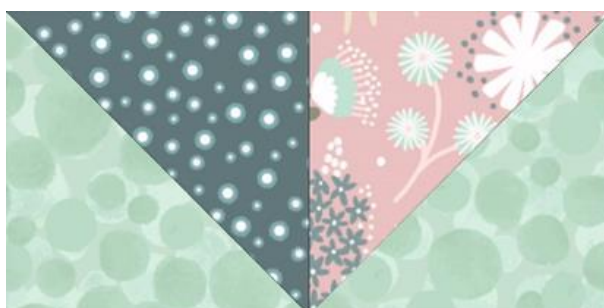


Figure 3

Sew the top row of each block together as in Figure 4



Figure 4

Sew the middle row of each block together as in Figure 5



Figure 5

Sew the bottom row together as in Figure 6

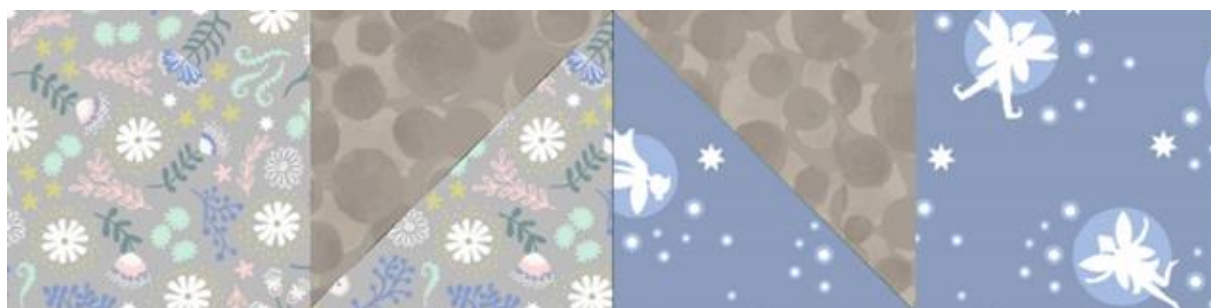


Figure 6

Stitch all three rows together to make each block. Make 25 blocks in total

Lay out the blocks and sew them together in rows. Sew the rows together to complete the quilt top

Quilting

Sandwich quilt top, wadding and backing together. Quilt by hand or machine as desired

Trim backing and wadding to size

Binding

Use your favourite method from fabric 1 to bind the quilt

Lewis & Irene

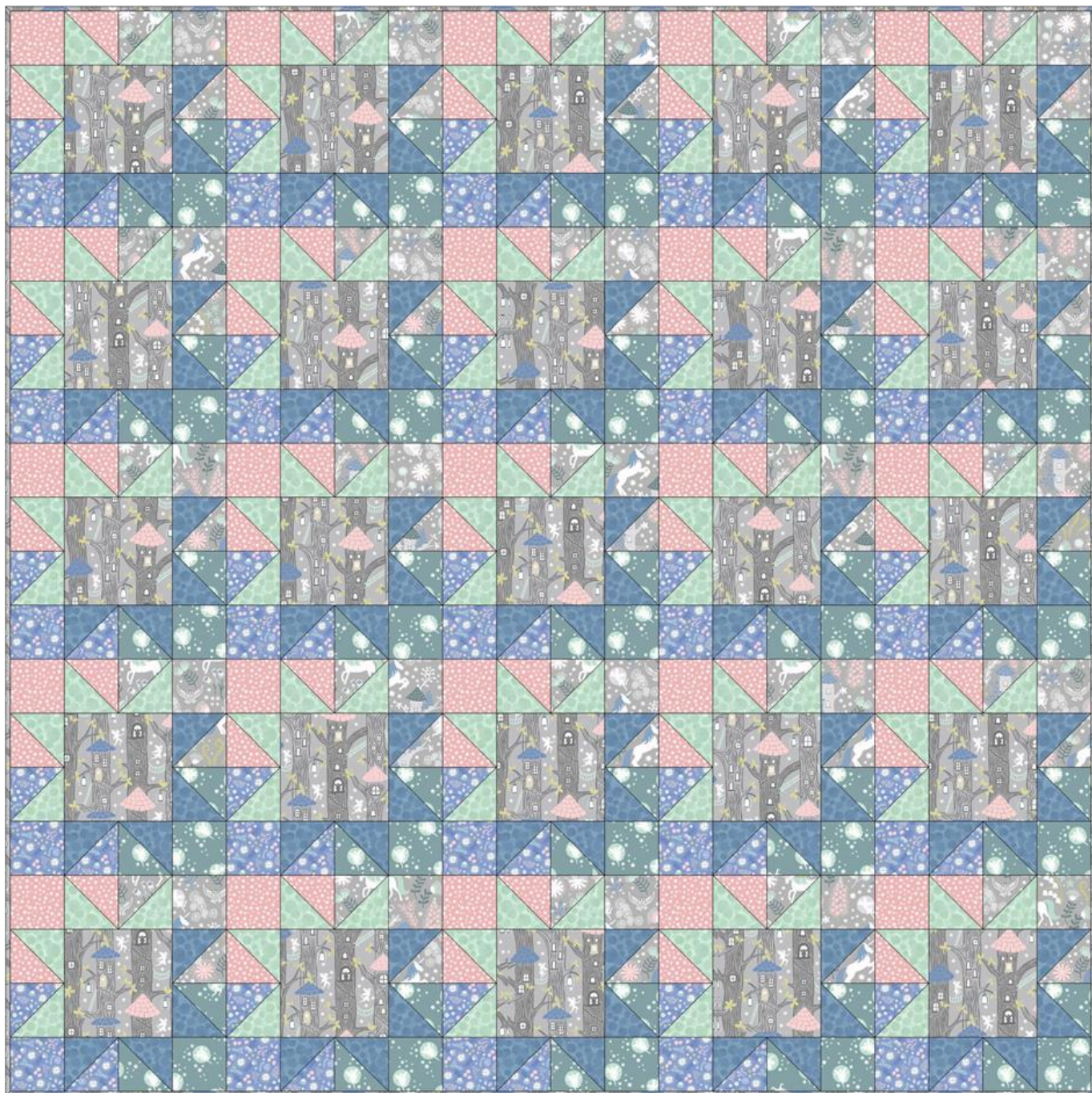
threaded with love

Fairy Lights Quilt

Designed and made by Sally Ablett

Quilt Size: 60" x 60"

Block Size: 12½" x 12½"



DESIGN 3 (Main Diagram)

FABRIC REQUIREMENTS (Fairy Lights Collection)

Fabric 1: 1⅛yd - 1.10mtr - A306.1 (Fairy houses grey)

Fabric 2: ⅝yd - 70cm - A307.2 (Glow sparkles dusky pink)

Fabric 3: ⅝yd - 70cm - A308.3 (Unicorn forest grey)

Fabric 4: ⅝yd - 70cm - A309.2 (Fairies on dusky green)

Fabric 5: ⅝yd - 70cm - A310.3 (Magical flowers on dusky blue)

Fabric 6: ⅝yd - 70cm - BB160 (Dorset blue)

Fabric 7: ⅝yd - 70cm - BB152 (Minty)

Wadding and backing 64" x 64"

All measurements include ¼" seam allowances; press each seam as you go

CUTTING

- 1.** From fabric 1 cut:
(25x) 6½" x 6½" block centres
- 2.** From fabric 2 cut:
(25x) 3⅞" x 3⅞" cut in half diagonally once
(25x) 3½" x 3½" block corners
- 3.** From fabric 3 cut:
(25x) 3⅞" x 3⅞" cut in half diagonally once
(25x) 3½" x 3½" block corners
- 4.** From fabric 4 cut:
(25x) 3⅞" x 3⅞" cut in half diagonally once
(25x) 3½" x 3½" block corners
- 5.** From fabric 5 cut:
(25x) 3⅞" x 3⅞" cut in half diagonally once
(25x) 3½" x 3½" block corners
- 6.** From fabric 6 cut:
(50x) 3⅞" x 3⅞" cut in half diagonally once
- 7.** From fabric 7 cut:
(50x) 3⅞" x 3⅞" cut in half diagonally once

MAKING UP THE BLOCK

Lay out the fabric pieces for each block as in Figure 1

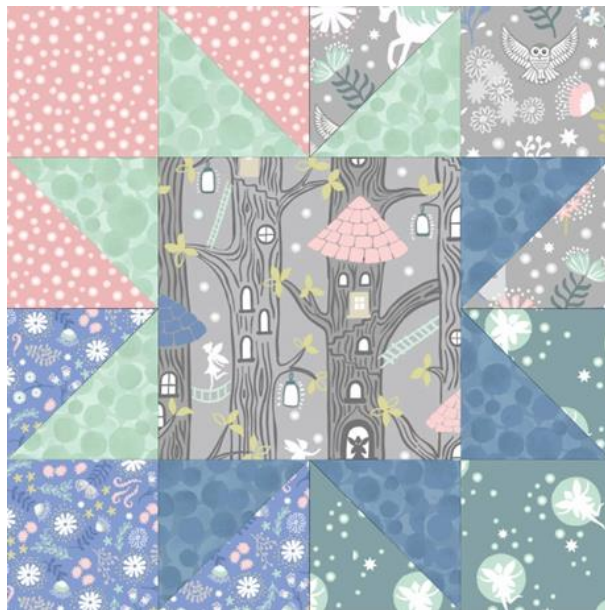


Figure 1

Sew the pairs of triangles together to make triangle units as in Figure 2. Repeat for all the triangles



Figure 2

Sew pairs of triangle units together as in Figure 3



Figure 3

Sew the top row of each block together as in Figure 4



Figure 4

Sew the middle row of each block together as in Figure 5



Figure 5

Sew the bottom row together as in Figure 6



Figure 6

Stitch all three rows together to make each block. Make 25 blocks in total

Lay out the blocks and sew them together in rows. Sew the rows together to complete the quilt top

Quilting

Sandwich quilt top, wadding and backing together. Quilt by hand or machine as desired

Trim backing and wadding to size

Binding

Use your favourite method from fabric 1 to bind the quilt