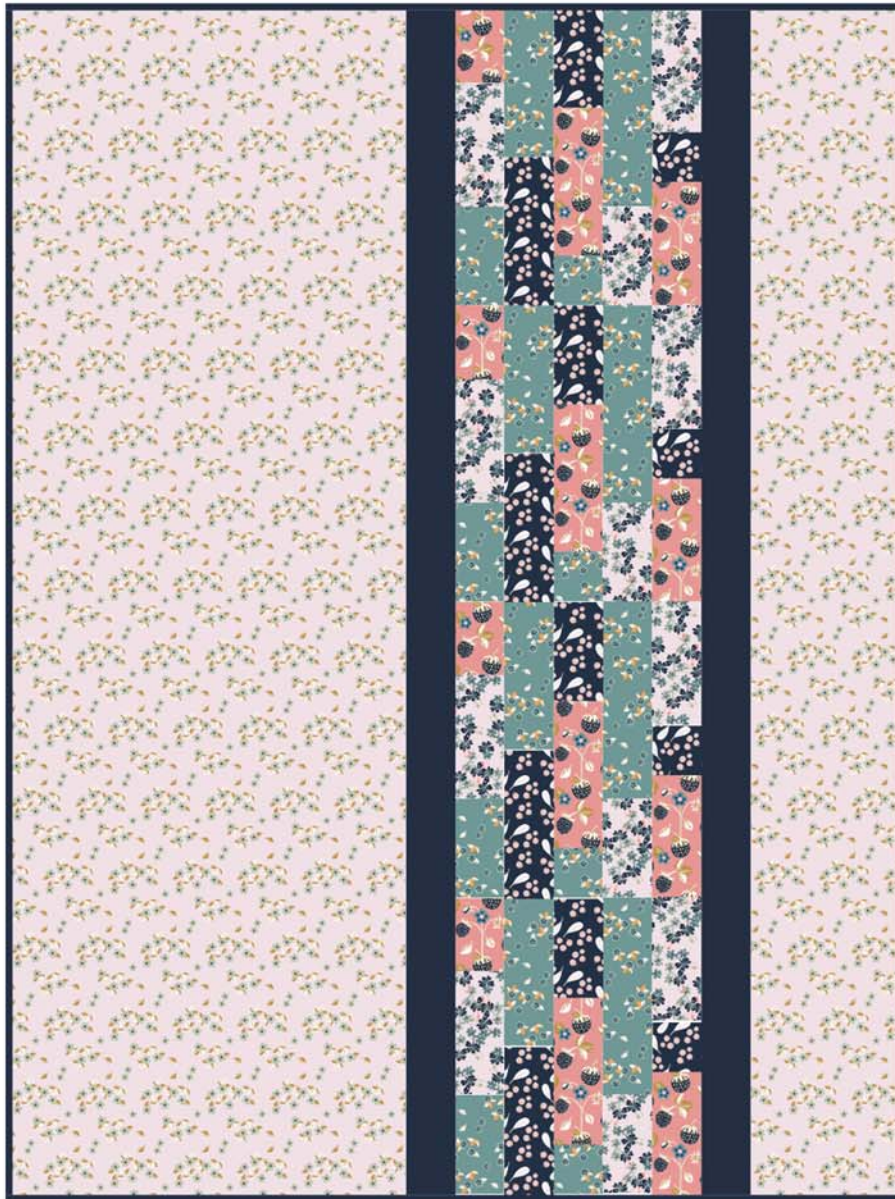


Modern Strippy Quilt (Q-035)



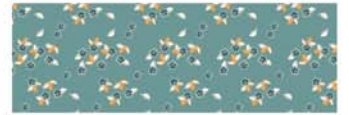
Fabric requirements



Fabric A: 29170301 #2
1/4 yd



Fabric B: 29170303 #1
1/4 yd



Fabric C: 29170302 #1
1/4 yd



Fabric D: 29170304 #3
1/4 yd



Fabric E: 29170302 #2
1-3/8 yd



Fabric F: 214-0097
5/8 yd (incl. binding)



Suggested Backing
21008-0097
1-1/2 yds

Exclusive Quilt Design by Tricia Maloney for Camelot Fabrics.
Fabric collection: Berry Blossoms by Teresa Chan for Camelot Fabrics.
The direction of the fabrics in the digital imagery may not be accurate to the final product.

Finished Size: 36" x 48"
Skill Level: Beginner



Blog, Facebook, Twitter @CamelotFabrics
Pinterest, YouTube & Instagram @Camelot_Fabrics
camelotfabrics.com • camelotfabricsblog.com
Toll-Free: 1-800-361-4120 • 514-382-2400
info@camelotfabrics.com • www.camelotfabrics.com

OTHER TOOLS & SUPPLIES

- needle and coordinating thread
- sewing machine
- iron & pressing surface
- rotary cutter and mat
- fabric shears
- straight pins

NOTES

- For best results, read through all instructions before starting.
- Please wash, dry & iron your fabrics before beginning, and trim selvages.
- Unless otherwise indicated, sew all seams with a 1/4" seam allowance.
- Press your seams open as you go.
- WOF = width of fabric

CUTTING

Fabric A

Cut (2) 2-1/2" x WOF strips. Sub-cut:

- (4) 3-1/2" x 2-1/2" rectangles. These will be referred to as piece (a).
- (4) 6-1/2" x 2-1/2" rectangles. These will be referred to as piece (b).
- (4) 5-1/2" x 2-1/2" rectangles. These will be referred to as piece (c).

Fabric B

Cut (2) 2-1/2" x WOF strips. Sub-cut:

- (8) 5-1/2" x 2-1/2" rectangles. These will be referred to as piece (d).
- (4) 4-1/2" x 2-1/2" rectangles. These will be referred to as piece (e).

Fabric C

Cut (3) 2-1/2" x WOF strips. Sub-cut:

- (4) 4-1/2" x 2-1/2" rectangles. These will be referred to as piece (f).
- (4) 6-1/2" x 2-1/2" rectangles. These will be referred to as piece (g).
- (4) 8-1/2" x 2-1/2" rectangles. These will be referred to as piece (h).
- (4) 2-1/2" x 2-1/2" squares. These will be referred to as piece (i).

Fabric D

Cut (2) 2-1/2" x WOF strips. Sub-cut:

- (4) 6-1/2" x 2-1/2" rectangles. These will be referred to as piece (j).
- (4) 4-1/2" x 2-1/2" rectangles. These will be referred to as piece (k).
- (4) 2-1/2" x 2-1/2" squares. These will be referred to as piece (l).



Fabric E

Cut (2) 16-1/2" x WOF strips. Sew the strips together end-to-end. Trim strip to 48-1/2" long. This will be referred to as piece (m).

Cut (2) 6-1/2" x WOF strips. Sew the strips together end-to-end. Trim strip to 48-1/2" long. This will be referred to as piece (n).

Fabric F

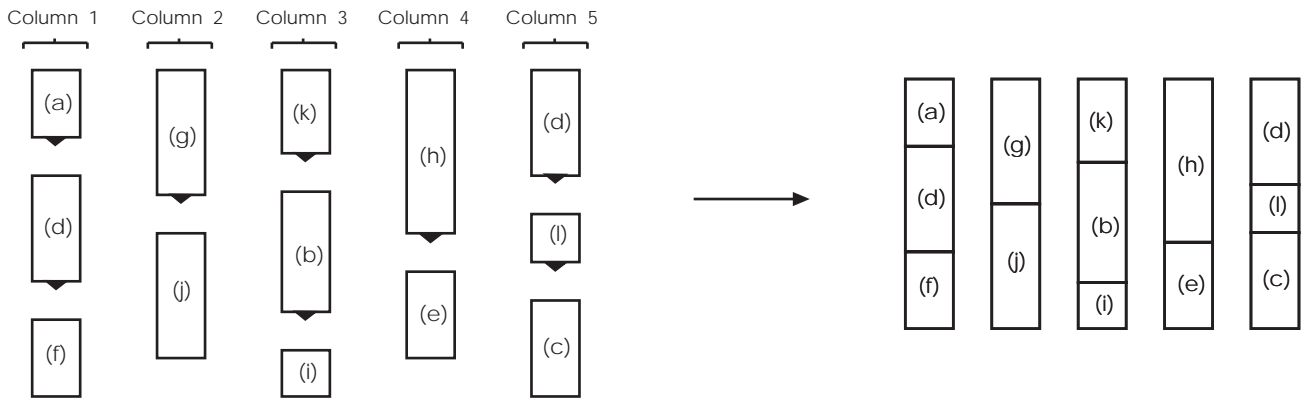
Cut (8) 2-1/2" x WOF strips. Sew (2) strips together end-to-end. Trim strip to 48-1/2" long. Repeat to make a second 48-1/2" strip. These will be referred to as piece (o).

Set remaining strips aside for binding.

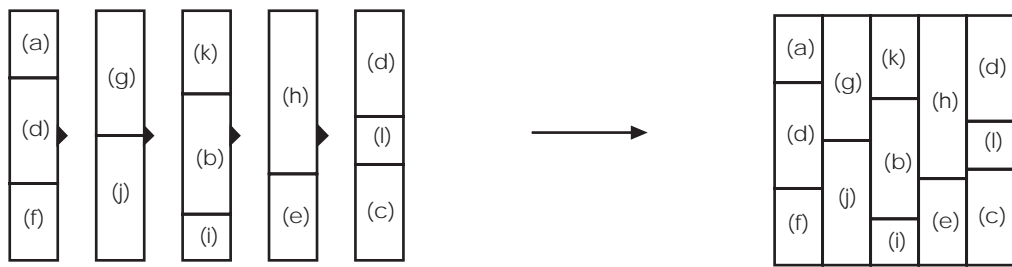
PIECING (NOTE: refer to the Assembly Layout on p.4 for fabric placement)

Making the Blocks

1. Sew the following pieces together from top to bottom, to create the columns within the blocks.



2. Sew the columns together from left to right. This completes the first block. Block measures 10-1/2" x 12-1/2". Repeat to make 4 blocks.

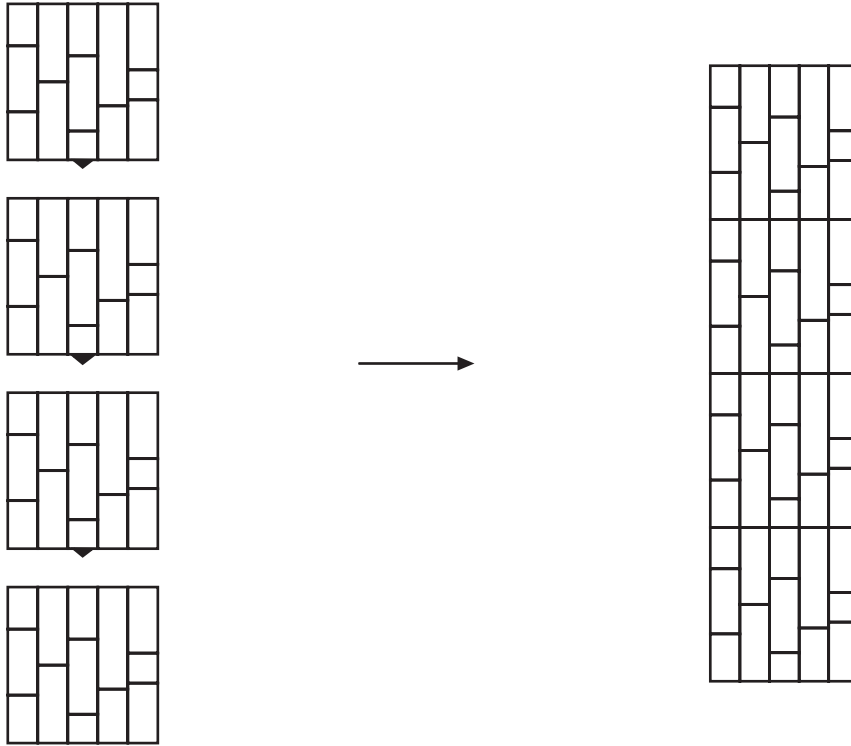


Measures 10-1/2" x 12-1/2"
Make 4.

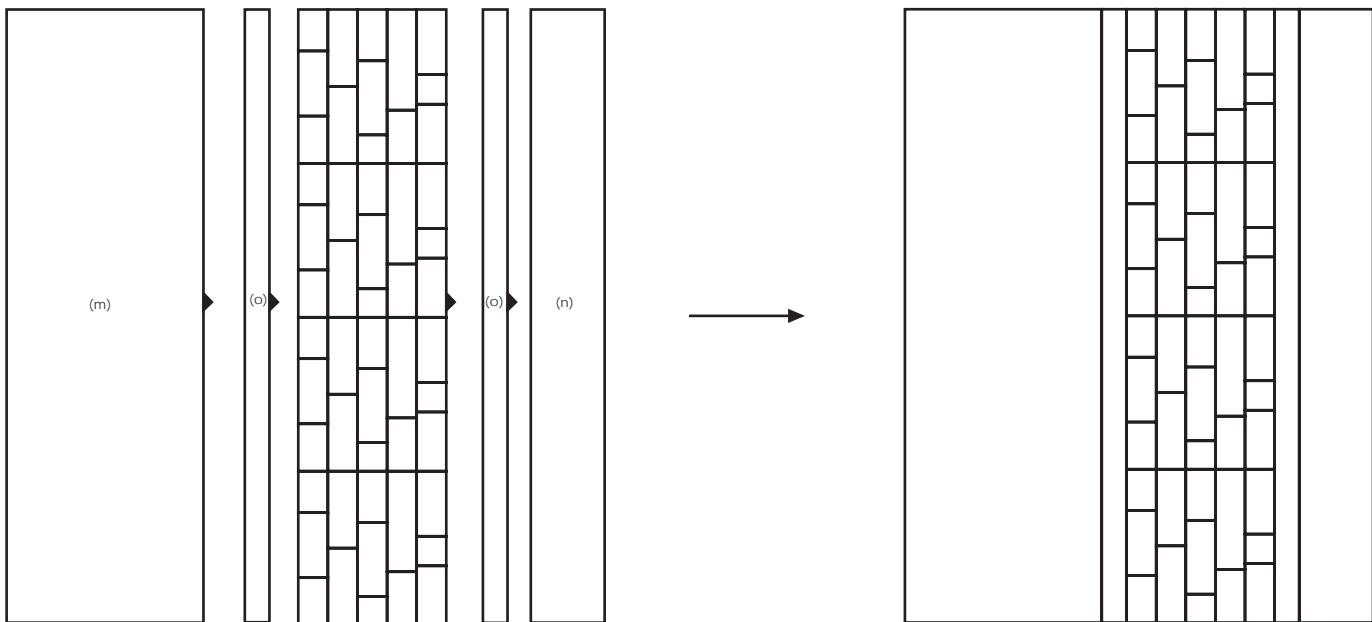


ASSEMBLY

3. Sew the four blocks together from top to bottom.



4. Sew the following pieces together, from left to right. This completes the quilt top.



FINISHING

5. Layer the quilt top with batting and backing. Baste and quilt as desired.

6. Sew the Fabric F binding strips together end-to-end and press seams open. Bind the quilt using your favorite method.

ASSEMBLY LAYOUT

