

Lewis & Irene

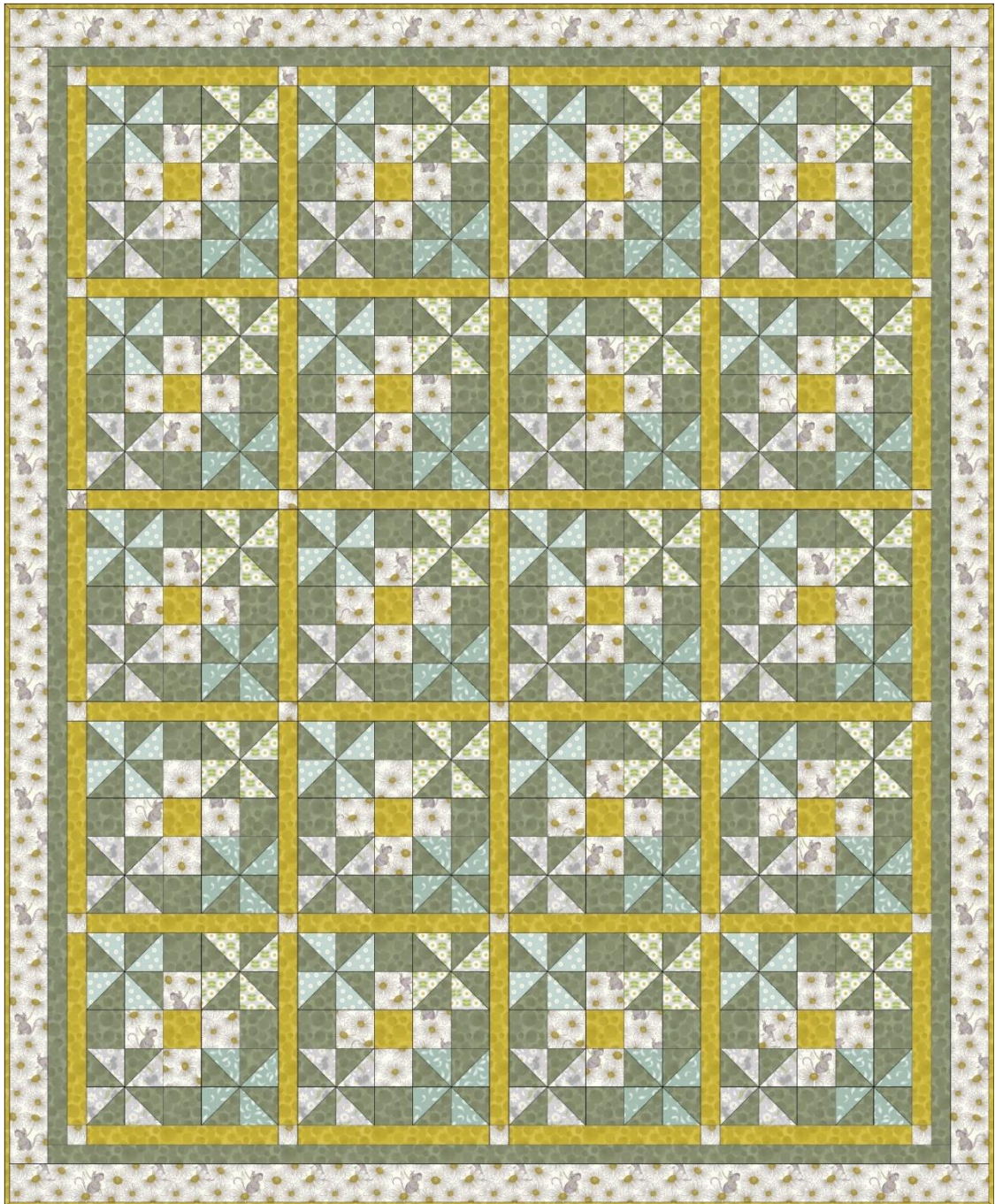
threaded with love

Love Me Love Me Not Quilt

Designed and made by Sally Ablett

Size: 51" x 62"

Block: 10½" x 10½"



DESIGN 1 (Main Diagram)

FABRIC REQUIREMENTS (Love Me Love Me Not Collection)

Fabric 1: 1yd - 1mtr - A271.1 (Little mouse & daisies on cream)

Fabric 2: fat¼ - A272.3 (Falling petals on duck egg)

Fabric 3: fat¼ - A273.1 (Mirrored mice on light grey)

Fabric 4: fat¼ - A274.1 (Retro daisy on palest grey)

Fabric 5: fat¼ - A275.2 (Dotty daisy on duck egg)

Fabric 6: 1⅝yd - 1.5mtr - BB141 (Khaki green)

Fabric 7: 1¼yd - 1.2mtr - BB139 (Chartreuse)

Wadding and backing 55" x 66"

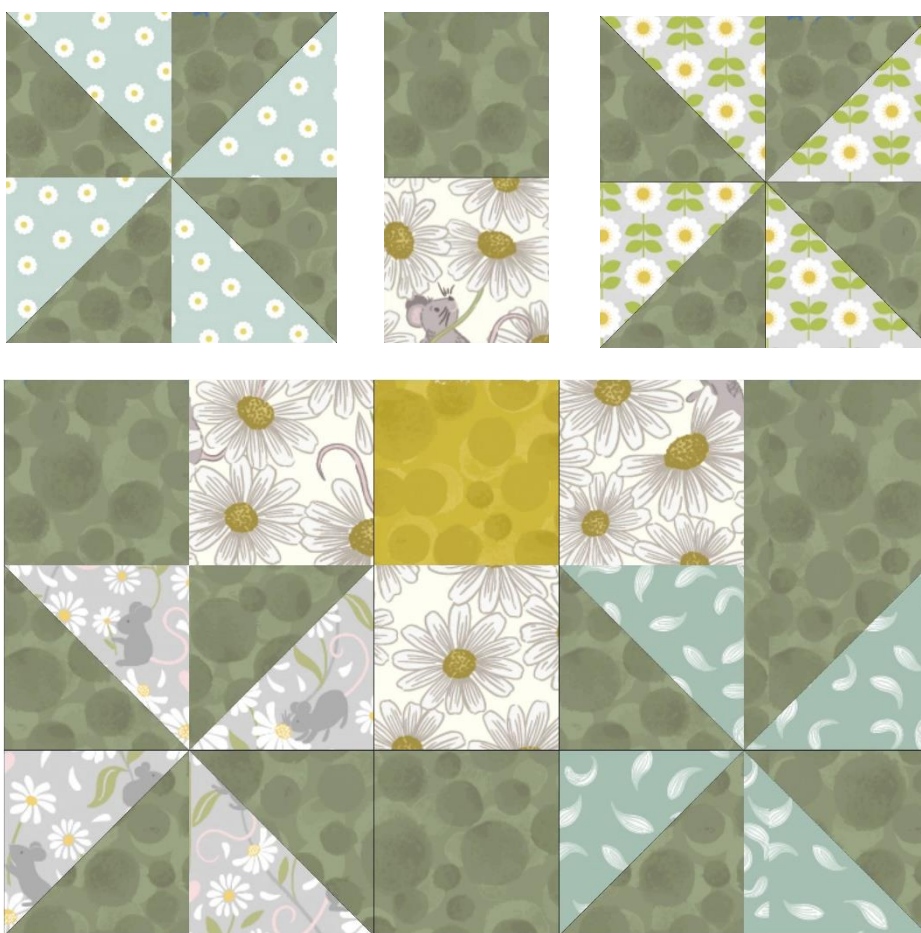
Use ¼" seam allowance throughout. Press all seams open unless otherwise noted

CUTTING

- 1.** From fabric 1 cut:
 - 2 x 2½" x 58½" (outer border, sides)
 - 2 x 2½" x 51½" (outer border, top and bottom)
 - 80 x 2½" x 2½"
 - 30 x 1½" x 1½"
- 2.** From fabric 2 cut:
 - 40 x 2⅞" x 2⅞" cut in half diagonally once
- 3.** From fabric 3 cut:
 - 40 x 2⅞" x 2⅞" cut in half diagonally once
- 4.** From fabric 4 cut:
 - 40 x 2⅞" x 2⅞" cut in half diagonally once
- 5.** From fabric 5 cut:
 - 40 x 2⅞" x 2⅞" cut in half diagonally once
- 6.** From fabric 6 cut:
 - 2 x 1½" x 56½" (inner border, sides)
 - 2 x 1½" x 47½" (inner border, top and bottom)
 - 80 x 2½" x 2½"
 - 160 x 2⅞" x 2⅞" cut in half diagonally once
- 7.** From fabric 7 cut:
 - 20 x 2½" x 2½"
 - 49 x 1½" x 12½"

MAKING UP THE BLOCK

For each block lay out the fabric pieces. This block is made up of small triangles and squares



Block diagram

Sew the small triangles together to make a square. Do this to all four

Next sew the squares together, your background square will be on the outside

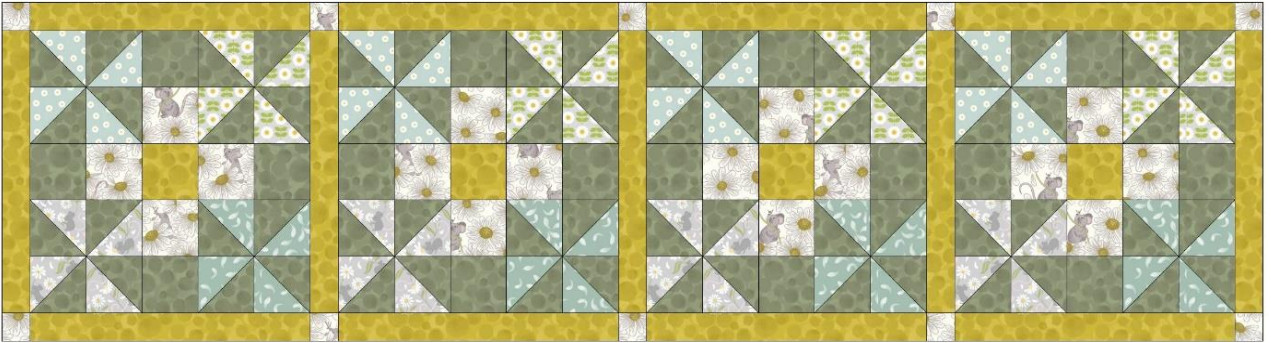
Lay out all the sewn pieces and stitch the rows together and then sew the rows to make the block

20 in total

MAKING UP THE QUILT TOP

Lay out all your blocks, sashing and small squares as in the main diagram

Stitch in rows



Stitch small square, sashing and then a square. Keep going until you have stitched the first row

Press the seam to the right and on the next row press your seams to the left. So, on each row it will be left and then right

BORDERS

When you have sewn all the rows add the borders, inner to the sides and then the top and bottom

Stitch the outer border sides and then the top and bottom

QUILTING

Sandwich quilt top, wadding and backing together

Quilt by hand or machine as desired

Trim backing and wadding to size

BINDING

Use your favourite method from fabric 7 to bind the quilt

Lewis & Irene

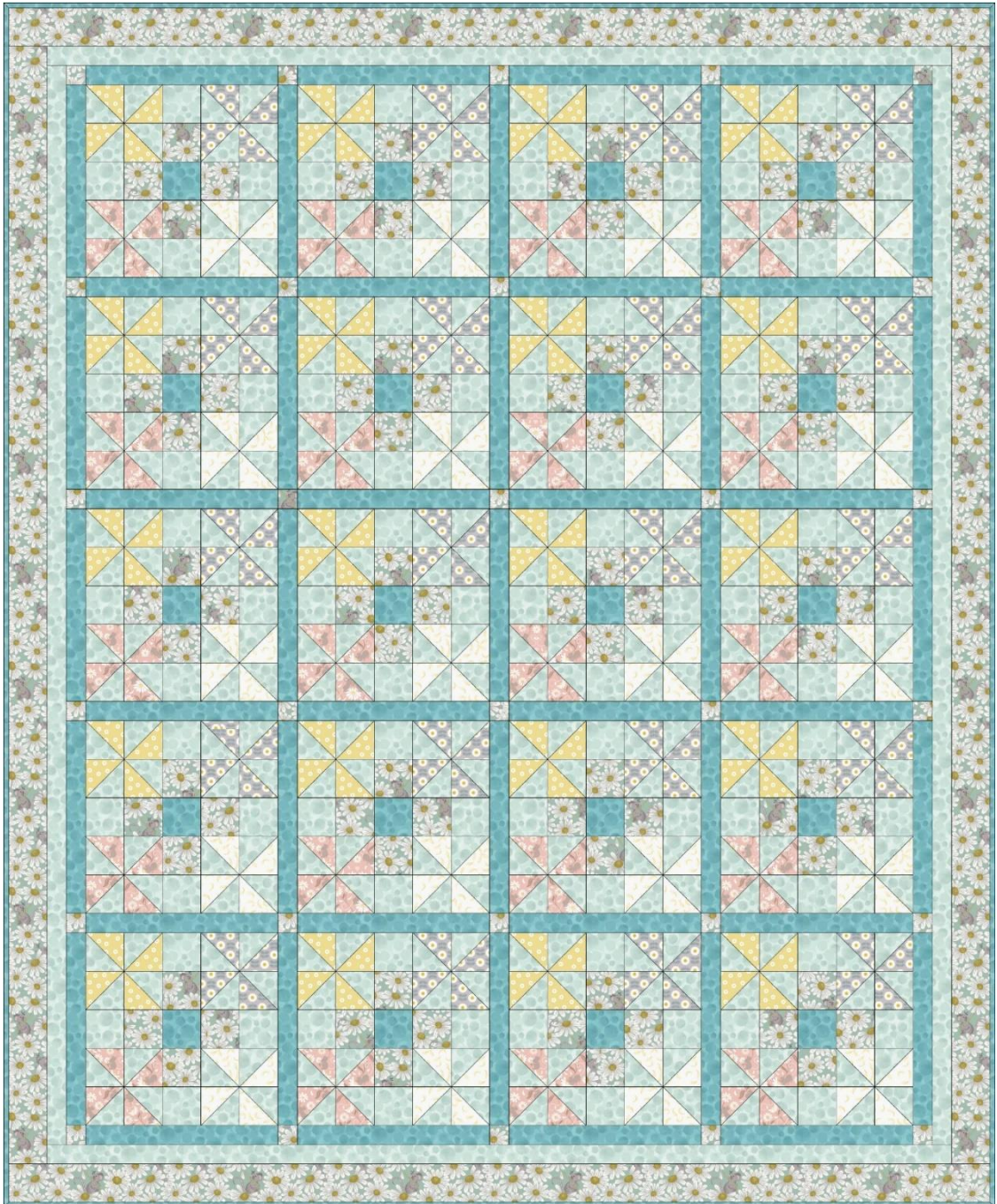
threaded with love

Love Me Love Me Not Quilt

Designed and made by Sally Ablett

Size: 51" x 62"

Block: 10½" x 10½"



DESIGN 2 (Main Diagram)

FABRIC REQUIREMENTS (Love Me Love Me Not Collection)

Fabric 1: 1yd - 1mtr - A271.2 (Little mouse & daisies on duck egg)

Fabric 2: fat¼ - A272.1 (Falling petals on cream)

Fabric 3: fat¼ - A273.3 (Mirrored mice on pink)

Fabric 4: fat¼ - A274.2 (Retro daisy on mid grey)

Fabric 5: fat¼ - A275.1 (Dotty daisy on yellow)

Fabric 6: 1⅝yd - 1.5mtr - BB131 (Light duck egg)

Fabric 7: 1¼yd - 1.2mtr - BB134 (Turquoise)

Wadding and backing 55" x 66"

Use ¼" seam allowance throughout. Press all seams open unless otherwise noted

CUTTING

- 1.** From fabric 1 cut:
 - 2 x 2½" x 58½" (outer border, sides)
 - 2 x 2½" x 51½" (outer border, top and bottom)
 - 80 x 2½" x 2½"
 - 30 x 1½" x 1½"
- 2.** From fabric 2 cut:
 - 40 x 2⅞" x 2⅞" cut in half diagonally once
- 3.** From fabric 3 cut:
 - 40 x 2⅞" x 2⅞" cut in half diagonally once
- 4.** From fabric 4 cut:
 - 40 x 2⅞" x 2⅞" cut in half diagonally once
- 5.** From fabric 5 cut:
 - 40 x 2⅞" x 2⅞" cut in half diagonally once
- 6.** From fabric 6 cut:
 - 2 x 1½" x 56½" (inner border, sides)
 - 2 x 1½" x 47½" (inner border, top and bottom)
 - 80 x 2½" x 2½"
 - 160 x 2⅞" x 2⅞" cut in half diagonally once
- 7.** From fabric 7 cut:
 - 20 x 2½" x 2½"
 - 49 x 1½" x 12½"

MAKING UP THE BLOCK

For each block lay out the fabric pieces. This block is made up of small triangles and squares



Block diagram

Sew the small triangles together to make a square. Do this to all four

Next sew the squares together, your background square will be on the outside

Lay out all the sewn pieces and stitch the rows together and then sew the rows to make the block

20 in total

MAKING UP THE QUILT TOP

Lay out all your blocks, sashing and small squares as in the main diagram

Stitch in rows



Stitch small square, sashing and then a square. Keep going until you have stitched the first row

Press the seam to the right and on the next row press your seams to the left. So, on each row it will be left and then right

BORDERS

When you have sewn all the rows add the borders, inner to the sides and then the top and bottom

Stitch the outer border sides and then the top and bottom

QUILTING

Sandwich quilt top, wadding and backing together

Quilt by hand or machine as desired

Trim backing and wadding to size

BINDING

Use your favourite method from fabric 7 to bind the quilt

Lewis & Irene

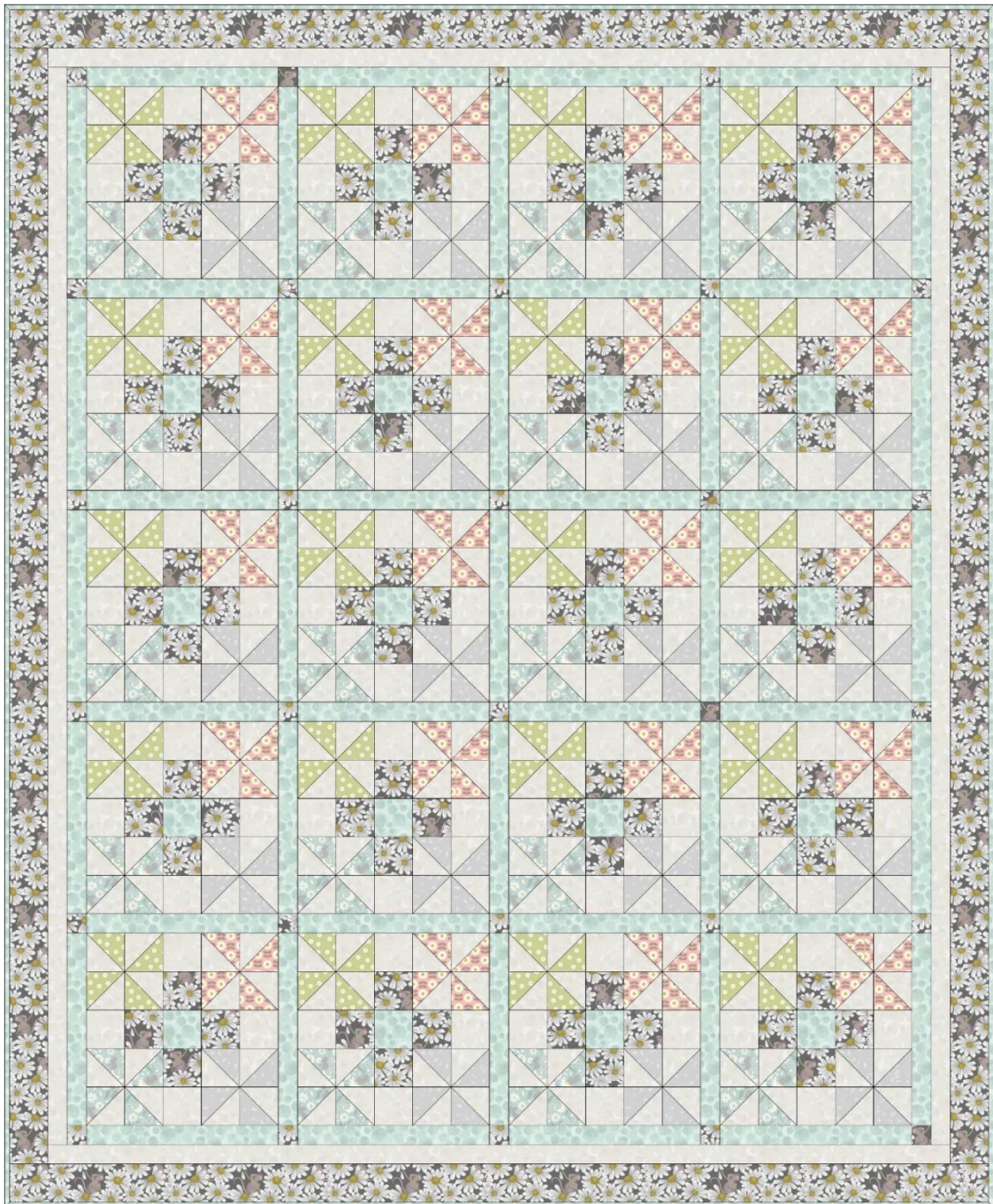
threaded with love

Love Me Love Me Not Quilt

Designed and made by Sally Ablett

Size: 51" x 62"

Block: 10½" x 10½"



DESIGN 3 (Main Diagram)

FABRIC REQUIREMENTS (Love Me Love Me Not Collection)

Fabric 1: 1yd - 1mtr - A271.3 (Little mouse & daisies on charcoal)

Fabric 2: fat¼ - A272.2 (Falling petals on light grey)

Fabric 3: fat¼ - A273.2 (Mirrored mice on duck egg)

Fabric 4: fat¼ - A274.3 (Retro daisy on pink)

Fabric 5: fat¼ - A275.3 (Dotty daisy on light grass)

Fabric 6: 1½yd - 1.5mtr - BB40 (Cream)

Fabric 7: 1¼yd - 1.2mtr - BB131 (Light duck egg)

Wadding and backing 55" x 66"

Use ¼" seam allowance throughout. Press all seams open unless otherwise noted

CUTTING

- 1.** From fabric 1 cut:
2 x 2½" x 58½" (outer border, sides)
2 x 2½" x 51½" (outer border, top and bottom)
80 x 2½" x 2½"
30 x 1½" x 1½"
- 2.** From fabric 2 cut:
40 x 2⅞" x 2⅞" cut in half diagonally once
- 3.** From fabric 3 cut:
40 x 2⅞" x 2⅞" cut in half diagonally once
- 4.** From fabric 4 cut:
40 x 2⅞" x 2⅞" cut in half diagonally once
- 5.** From fabric 5 cut:
40 x 2⅞" x 2⅞" cut in half diagonally once
- 6.** From fabric 6 cut:
2 x 1½" x 56½" (inner border, sides)
2 x 1½" x 47½" (inner border, top and bottom)
80 x 2½" x 2½"
160 x 2⅞" x 2⅞" cut in half diagonally once
- 7.** From fabric 7 cut:
20 x 2½" x 2½"
49 x 1½" x 12½"

MAKING UP THE BLOCK

For each block lay out the fabric pieces. This block is made up of small triangles and squares



Block diagram

Sew the small triangles together to make a square. Do this to all four

Next sew the squares together, your background square will be on the outside

Lay out all the sewn pieces and stitch the rows together and then sew the rows to make the block

20 in total

MAKING UP THE QUILT TOP

Lay out all your blocks, sashing and small squares as in the main diagram

Stitch in rows



Stitch small square, sashing and then a square. Keep going until you have stitched the first row

Press the seam to the right and on the next row press your seams to the left. So, on each row it will be left and then right

BORDERS

When you have sewn all the rows add the borders, inner to the sides and then the top and bottom

Stitch the outer border sides and then the top and bottom

QUILTING

Sandwich quilt top, wadding and backing together

Quilt by hand or machine as desired

Trim backing and wadding to size

BINDING

Use your favourite method from fabric 7 to bind the quilt