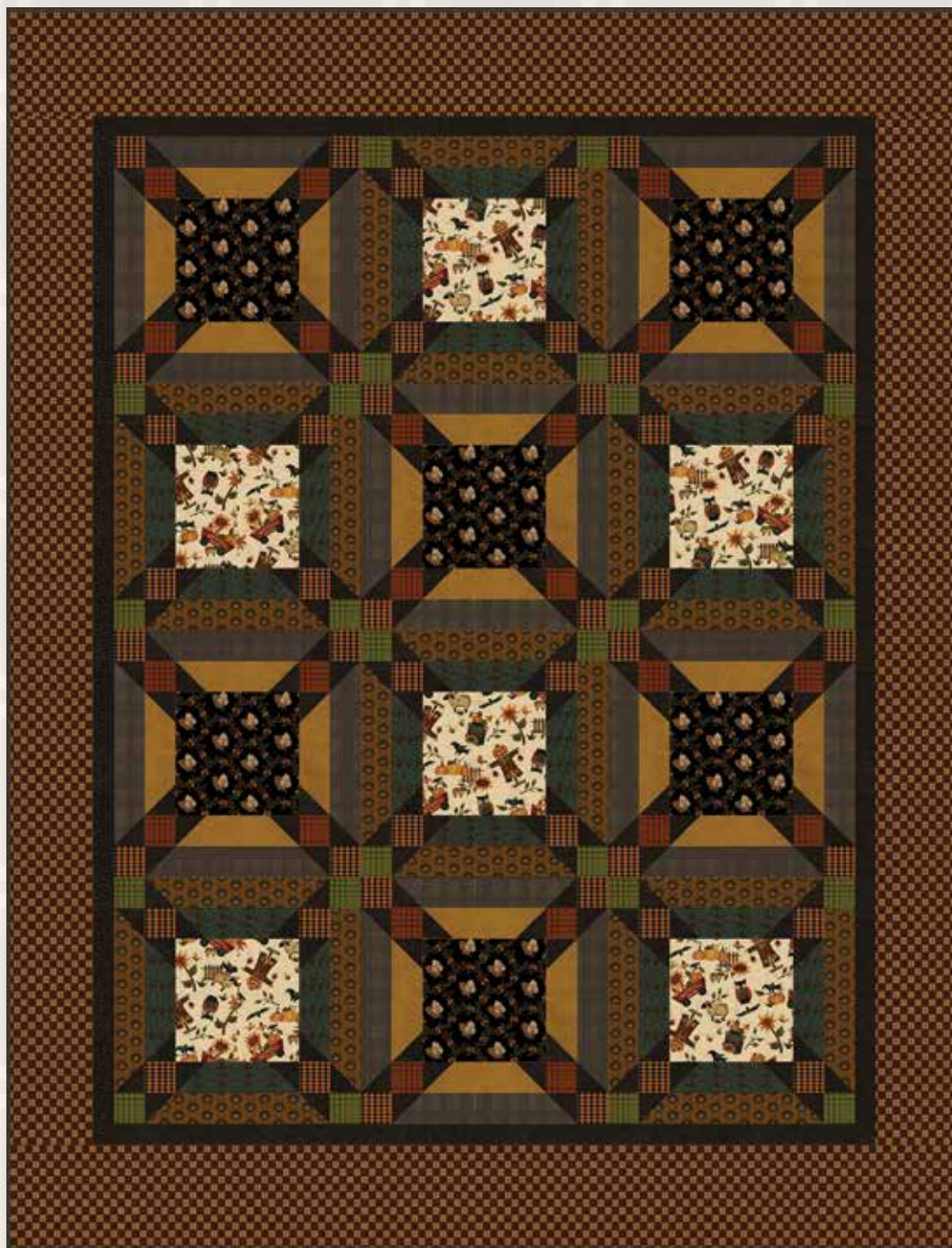


Buttermilk Basin's Pumpkin Farm

A Free Project Sheet
NOT FOR RESALE

By Stacy West of Buttermilk Basin

Quilt Design by Heidi Pridemore



Quilt 2

Skill Level: Advanced Beginner

 Henry Glass & Co., Inc.



[facebook](#)

Finished Quilt Size: 46" x 60"
49 West 37th Street, New York, NY 10018
tel: 212-686-5194 fax: 212-532-3525
Toll Free: 800-294-9495
www.henryglassfabrics.com

PUMPKIN FARM Quilt 2

Fabrics in the Collection



Pumpkin Farm Panel - Cream
2050P-44



Border Stripe - Cream
2051-44



Tossed Characters - Cream
2052-44



Oak Leaf Stripe - Teal
2053-76



Oak Leaf Stripe - Red
2053-88



Mini Check - Green
2054-66



Mini Check - Black
2054-99



Whirlygigs - Squash
2055-35



Whirlygigs - Purple
2055-58



Calico Flowers - Raisin
2056-58



Calico Flowers - Red
2056-88



Pumpkin Blossoms - Gold
2057-33



Pumpkin Blossoms - Pumpkin
2057-35



Checkerboard Foulards
Gold - 2058-33



Checkerboard Foulards
Pumpkin - 2058-35



Checkerboard Foulards
Sage - 2058-66



Oak Leaf Toss - Forest
2059-66



Oak Leaf Toss - Black
2059-99

Select Fabrics from Wool Yarn Dyes & Cotton Yarn Dyes



Wool Yarn Dyes
Gold
2060WY-33



Cotton Yarn Dyes
Pumpkin/Brown
2064Y-38



Cotton Yarn Dyes
Pumpkin/Brown
2065Y-38



Cotton Yarn Dyes
Olive
2065Y-66



Cotton Yarn Dyes
Charcoal
2066Y-99



Cotton Yarn Dyes
Pumpkin/Brown
2067Y-73

Materials

¼ yard	Oak Leaf Toss - Black (A)	2059-99
⅓ yard	Wool Yarn Dyes - Gold (B)	2060WY-33
⅞ yards	Cotton Yarn Dyes - Charcoal (C)	2066Y-99
¼ yard	Cotton Yarn Dyes - Pumpkin/Brown (D)	2065Y-38
¼ yard	Cotton Yarn Dyes - Pumpkin/Brown (E)	2067Y-73
¼ yard	Tossed Characters - Cream (F)	2052-44
⅓ yard	Oak Leaf Stripe - Teal (G)	2053-76
½ yard	Pumpkin Blossoms - Gold (H)	2057-33
¼ yard	Cotton Yarn Dyes - Olive (I)	2065Y-66
1 yard	Checkerboard Foulards - Pumpkin (J)	2058-35
⅞ yard	Mini Check - Black (K)	2054-99*
3 yards	Cotton Yarn Dyes - Pumpkin/Brown (Backing)	2064Y-38

*Includes binding

Cutting Instructions

Please note: all strips are cut across the width of fabric (WOF) from selvage to selvage unless otherwise noted.

From the Oak Leaf Toss - Black (A), cut:

- (1) 6 ½" x WOF strip. Sub-cut (6) 6 ½" squares.

From the Wool Yarn Dyes - Gold (B), cut:

- (4) 2" x WOF strips. Sub-cut (24) 2" x 6 ½" strips.

From the Cotton Yarn Dyes - Charcoal (C), cut:

- (10) 2" x WOF strips. Sub-cut (192) 2" squares.
- (3) 1 ½" x WOF strips. Sew the strips together end to end with diagonal seams and cut (2) 1 ½" x 48 ½" strips.
- (2) 1 ½" x 38 ½" WOF strips.

From the Cotton Yarn Dyes - Pumpkin/Brown (D), cut:

- (2) 2" x WOF strips. Sub-cut (24) 2" squares.

From the Cotton Yarn Dyes - Pumpkin/Brown (E), cut:

- (3) 2" x WOF strips. Sub-cut (48) 2" squares.

From the Tossed Characters - Cream (F), cut:

- (1) 6 ½" x WOF strip. Sub-cut (6) 6 ½" squares.

From the Oak Leaf Stripe - Teal (G), cut:

- (4) 2" x WOF strips. Sub-cut (24) 2" x 6 ½" strips.

From the Pumpkin Blossoms - Gold (H), cut:

- (6) 2" x WOF strips. Sub-cut (24) 2" x 9 ½" strips.

From the Cotton Yarn Dyes - Olive (I), cut:

- (2) 2" x WOF strips. Sub-cut (24) 2" squares.

From the Checkerboard Foulards - Pumpkin (J), cut:

- (3) 4 ½" x WOF strips. Sew the strips together end to end with diagonal seams and cut (2) 4 ½" x 50 ½" strips.
- (3) 5 ½" x WOF strips. Sew the strips together end to end with diagonal seams and cut (2) 5 ½" x 46 ½" strips.

From the Mini Check - Black (K), cut:

- (6) 2" x WOF strips. Sub-cut (24) 2" x 9 ½" strips.
- (6) 2 ½" x WOF strips for the binding.

From the Cotton Yarn Dyes - Pumpkin/Brown (Backing), cut:

- (2) 54" x WOF strips for the backing. Sew the strips together and trim to make the 54" x 68" back.

Sewing Instructions

1. Place (1) 2" Fabric C square on the left side of (1) 2" x 6 ½" Fabric B strip, right sides together (Fig. 1). Sew across the diagonal of the square from the upper right corner to the lower left corner (Fig. 1). Flip open the triangle formed and press (Fig. 2). Trim away the excess fabric from behind the triangle, leaving a ¼" seam allowance.



Fig. 1



Fig. 2

2. Place another 2" Fabric C square on the right side of the 2" x 6 ½" Fabric B strip, right sides together (Fig. 3). Sew across the diagonal of the square from the upper left corner to the lower right corner (Fig. 3). Flip open the triangle formed and press. Trim away the excess fabric from behind the triangle, leaving a ¼" seam allowance to make (1) Unit 1 strip (Fig. 4).



Fig. 3

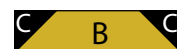
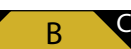


Fig. 4

3. Repeat Steps 1-2 to make (24) Unit 1 strips total.

4. Repeat Steps 1-2 using (24) 2" x 9 ½" Fabric K strips and (48) 2" Fabric C strips to make (24) Unit 2 strips (Fig. 5).

Unit 1
make 24



Unit 2
make 24



Fig. 5

5. Sew (1) Unit 1 strip to each side of (1) 6 ½" Fabric A square. Sew (1) 2" Fabric D square to each end of (1) Unit 1 strip. Repeat to make a second strip. Sew the strips to the top and to the bottom of the Fabric A strip to make (1) Unit 3 block (Fig. 6). Repeat to make (6) Unit 3 blocks total.

Unit 3
make 6

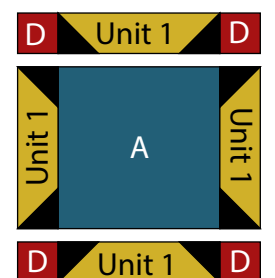
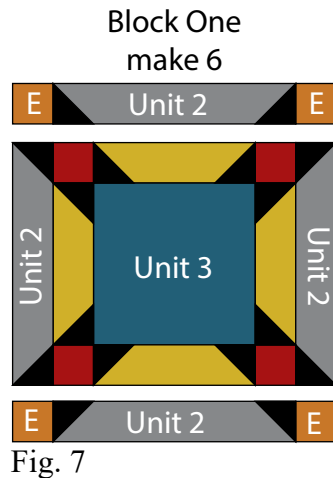
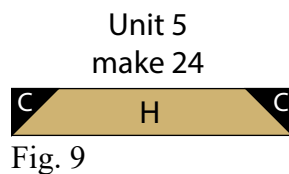
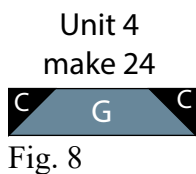


Fig. 6

6. Sew (1) Unit 2 strip to each side of (1) Unit 3 block. Sew (1) 2" Fabric E square to each end of (1) Unit 2 strip. Repeat to make a second strip. Sew the strips to the top and to the bottom of the Unit 3 block to make (1) Block One square (Fig. 7). Repeat to make (6) Block One squares total.

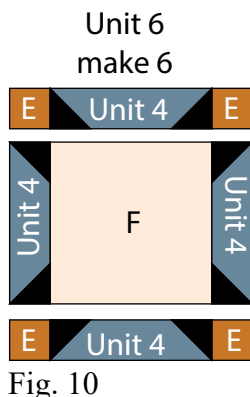


7. Repeat Steps 2-3 using (24) 2" x 6 1/2" Fabric G strips and (48) 2" Fabric C squares to make (24) Unit 4 strips (Fig. 8).

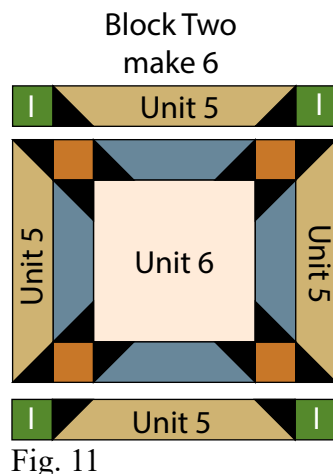


8. Repeat Steps 2-3 using (24) 2" x 9 1/2" Fabric H strips and (48) 2" Fabric C squares to make (24) Unit 5 strips (Fig. 9).

9. Sew (1) Unit 4 strip to each side of (1) 6 1/2" Fabric F square. Sew (1) 2" Fabric E square to each end of (1) Unit 4 strip. Repeat to make a second strip. Sew the strips to the top and to the bottom of the Fabric F strip to make (1) Unit 6 block (Fig. 10). Repeat to make (6) Unit 6 blocks total.



10. Sew (1) Unit 5 strip to each side of (1) Unit 6 block. Sew (1) 2" Fabric I square to each end of (1) Unit 5 strip. Repeat to make a second strip. Sew the strips to the top and to the bottom of the Unit 6 block to make (1) Block Two square (Fig. 11). Repeat to make (6) Block Two squares total.



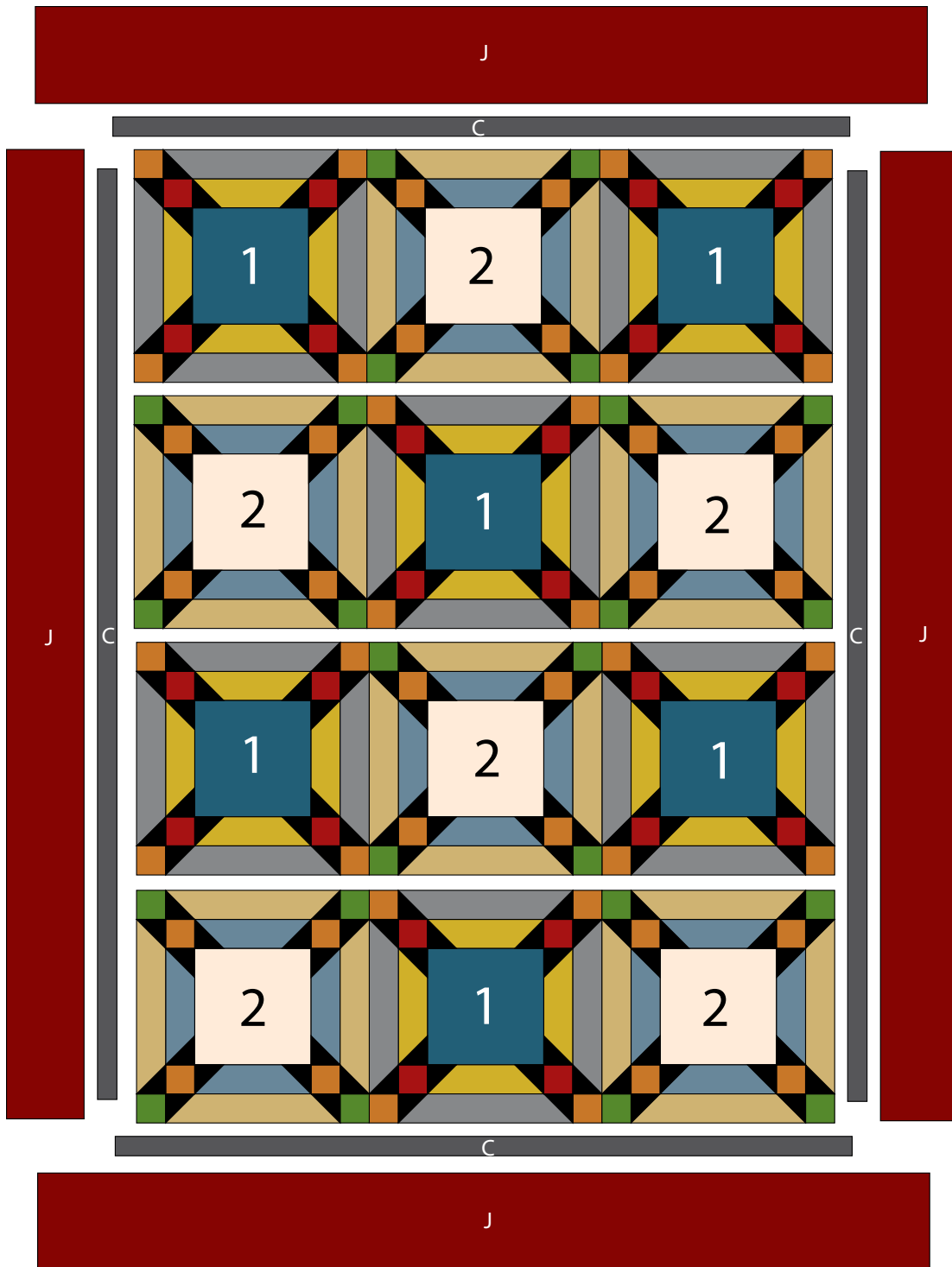
Quilt Top Assembly

(Refer to the Quilt Layout while assembling.)

11. Sew (1) Block One square to each side of (1) Block Two square to make Row One. Repeat to make Row Three.
12. Sew (1) Block Two square to each side of (1) Block One square to make Row Two. Repeat to make Row Four.
13. Sew the (4) rows together in numerical order to make the Center Block.
14. Sew (1) 1 1/2" x 48 1/2" Fabric C strip to each side of the Center Block. Sew (1) 1 1/2" x 38 1/2" Fabric C strip to the top and to the bottom of the Center Block.
15. Sew (1) 4 1/2" x 50 1/2" Fabric J strip to each side of the Center Block. Sew (1) 5 1/2" x 46 1/2" Fabric J strip to the top and to the bottom of the Center Block to make the quilt top.
16. Layer and quilt as desired.
17. Sew the (6) 2 1/2" x WOF Fabric K strips together, end to end with 45-degree seams, to make the binding. Fold this long strip in half lengthwise with wrong sides together and press.
18. Bind as desired.

PUMPKIN FARM

Quilt 2



Quilt Layout

Every effort has been made to ensure that all projects are error free. All the information is presented in good faith, however no warranty can be given nor results guaranteed as we have no control over the execution of instructions. Therefore, we assume no responsibility for the use of this information or damages that may occur as a result. When errors are brought to our attention, we make every effort to correct and post a revision as soon as possible. Please make sure to check www.henryglassfabrics.com for pattern updates prior to starting the project. We also recommend that you test the project prior to cutting for kits. Finally, all free projects are intended to remain free to you and are not for resale.