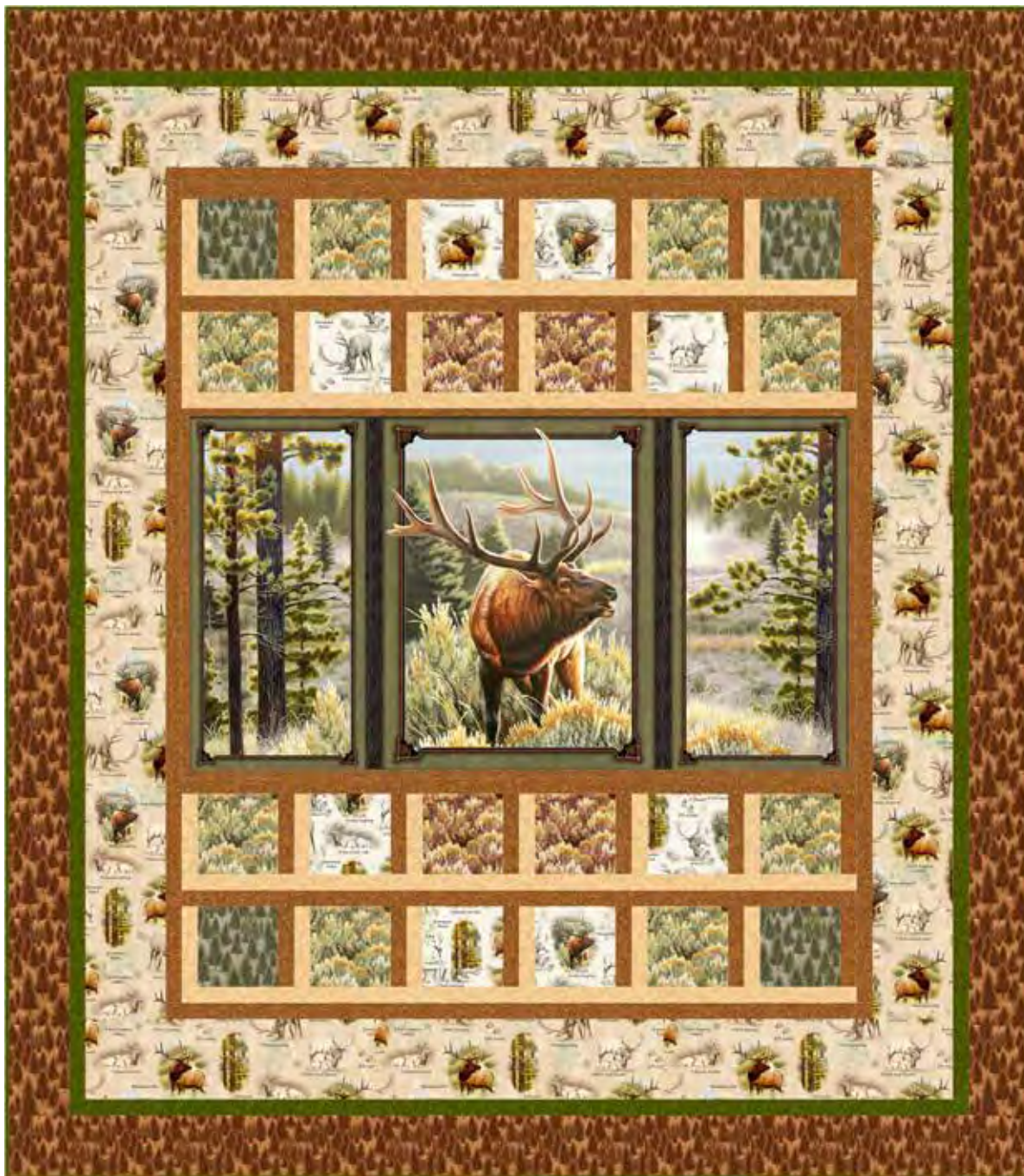




quilting
treasures
IMAGINE & CREATE

Mountain Elk



Designed By: Larene Smith of The Quilted Button
Finished Quilt Size: 64" x 73"

Cynthia Fisher



25808 X



25810 G



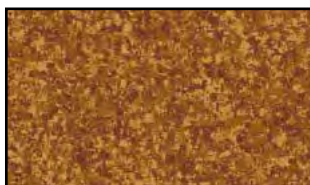
25811 G



25811 A



25809 K



23528 A



24777 SA



25809 A



23528 F



25810 AT

| QUILT REQUIREMENTS | | |
|----------------------------|---------------|---------|
| | | 12 Kits |
| Design: | Yards | Bolts |
| 25808 X | (1) 24" Panel | 1 |
| 25810 G | ¼ | 1 |
| 25811 G | ¾ | 1 |
| 25811 A | ¼ | 1 |
| 25809 K | ½ | 1 |
| 23528 A | ⅞ | 1 |
| 24777 SA | ½ | 1 |
| 25809 A | 1⅓ | 2 |
| 23528 F (includes binding) | 1 | 1 |
| 25810 AT | 2 | 2 |
| 25809 A (Backing) | 4½ | 4 |

General Information

- Skill Level: Confident Beginner
- Please read all instructions before beginning.
- All seams are sewn with a ¼" seam allowance.
- Pre-wash all fabrics and press with spray starch. *It is not recommended to pre-wash the Panel.*
- WOF = Width of Fabric is based on 40" except for the Panel - **Note:** *Be very careful when cutting the Panel to maximize the fabric.*
- Press all seams open (unless directed otherwise) to decrease bulk.
- There are SIX Borders including ONE with Blocks around the Panel and are numbered from the inside out.
- Finished Blocks are 7" Square.
- Label all pieces when cut for easier construction.

Step 1: Cutting the Fabric

1. 25808 X - Mountain Elk Picture Panel Fabric A

- Fussy cut the Panel to measure 41½" x 22½" - Center.

2. 25810 G - Pine Trees - Green Fabric B

- Cut (1) strip at 5½" x WOF - Sub-cut into (4) 5½" squares - Block A.

3. 25811 G - Brush - Green Fabric C

- Cut (2) strips at 5½" x WOF - Sub-cut into (8) 5½" squares - Block B.

4. 25811 A - Brush - Nutmeg Fabric D

- Cut (1) strip at 5½" x WOF - Sub-cut into (4) 5½" squares - Block C.

5. 25809 K - Elk Vignettes - Stone Fabric E

- Fussy cut (8) 5½" squares - Block D.

6. 23528 A - Color Blends - Nutmeg Fabric F

- Cut (4) strips at 1" x WOF - Sub-cut into (2) 41½" x 1" rectangles (Top and Bottom) and (2) 1" x 23½" rectangles (Left and Right Sides) - Border 1.
- Cut (2) strips at 6½" x WOF - Sub-cut into (48) 1½" x 6½" rectangles - Blocks.
- Cut (6) strips at 1½" x WOF - Join all the 1½" edges then sub-cut into (2) 51½" x 1½" rectangles (Left and Right Sides) and (2) 1½" x 44½" rectangles (Top and Bottom) - Border 3.



7. 24777 SA - Leaf Cornsilk - Fabric G

- Cut (2) strips at $6\frac{1}{2}$ " x WOF - Sub-cut into (48) $1\frac{1}{2}$ " x $6\frac{1}{2}$ " rectangles - Blocks.

8. 25809 A - Elk Vignettes - Light Tan Fabric H

- Cut (2) strips at $5\frac{1}{2}$ " parallel to the selvage - Sub-cut (2) $53\frac{1}{2}$ " x $5\frac{1}{2}$ " rectangles (Left and Right Sides). From the balance of the fabric cut (4) strips at $5\frac{1}{2}$ " x WOF (approximately 29") - Join the $5\frac{1}{2}$ " edge then sub-cut into (2) $54\frac{1}{2}$ " x $5\frac{1}{2}$ " rectangles (Top and Bottom) - Border 4.

9. 23528 F - Color Blends - Avocado - Fabric I

- Cut (7) strips at $1\frac{1}{2}$ " x WOF - Join all the $1\frac{1}{2}$ " edges - Sub-cut into (2) $1\frac{1}{2}$ " x $63\frac{1}{2}$ " rectangles (Left and Right Sides) and (2) $56\frac{1}{2}$ " x $1\frac{1}{2}$ " rectangles (Top and Bottom) - Border 5.
- Cut (8) strips at $2\frac{1}{2}$ " x WOF - Join all the strips at the $2\frac{1}{2}$ " edge to make on continuous strip - Binding.

10. 25810 AT - Pine Trees - Nutmeg Fabric J

- Cut (2) strips at $4\frac{1}{4}$ " parallel to the selvage - Sub-cut into (2) $4\frac{1}{4}$ " x $65\frac{1}{2}$ " rectangle (Left and Right Sides). From the balance of the fabric cut (5) strips at $4\frac{1}{4}$ " x WOF (approximately 31") - Join the $4\frac{1}{4}$ " edges, then sub-cut into (2) 64 " x $4\frac{1}{4}$ " rectangles (Top and Bottom) - Border 6.

11. 25809 A - Elk Vignettes - Light Tan

- Cut (2) 79" x WOF Piece together to make directional backing.

Step 2 - Border 1

- Sew (1) Fabric F $41\frac{1}{2}$ " x 1" rectangle to the top and bottom and (1) Fabric F 1" x $23\frac{1}{2}$ " rectangle to the left and right sides to measure $42\frac{1}{2}$ " x $23\frac{1}{2}$ " to finish Border 1.

Note: From this point forward each time a border or block is added to the center it will be referred to as the Center.

Step 3 - Border 2 - Blocks

(Fabrics B, C, D, and E are all directional. Please take care when piecing blocks)

- Sew (1) Fabric G $1\frac{1}{2}$ " x $6\frac{1}{2}$ " rectangle to the left side of (1) Fabric B $5\frac{1}{2}$ " square with a PARTIAL SEAM (A "Partial Seam" aka "PS" is sewing only half way down the shortest edge - This balance of the seam will be finished last).
- Sew (1) Fabric F $6\frac{1}{2}$ " x $1\frac{1}{2}$ " rectangle to the top - all the way across.
- Sew (1) Fabric F $1\frac{1}{2}$ " x $6\frac{1}{2}$ " rectangle to the right side all the way across.
- Sew (1) Fabric G $6\frac{1}{2}$ " x $1\frac{1}{2}$ " rectangle to the bottom all the way across.
- Finish the "PS" to finish the block at $7\frac{1}{2}$ " square.
- Repeat (3) more times to make (4) of Block A as illustrated in Example A.



Example A
Finished Block

Note:

Label each block when finished for easier construction.

Refer to the illustration of the cover for Blocks B, C, and D.

Make (8) of Block B (Fabric C $5\frac{1}{2}$ " Square)

Make (4) of Block C (Fabric D $5\frac{1}{2}$ " Square)

Make (8) of Block D (Fabric E $5\frac{1}{2}$ " Square)

Repeat Instructions 13 - 17 to make the remaining Blocks exactly as done for Block A except Fabric B will change.



19. Sew (6) blocks together keeping Fabric F towards the top to make (4) rows at $42\frac{1}{2}$ " x $7\frac{1}{2}$ " as follows:

- a. Row 1 - Block A - Block B - Block D - Block D - Block B - Block A
- b. Row 2 - Block B - Block D - Block C - Block C - Block D - Block B
- c. Row 3 - Same as Row 2
- d. Row 4 - Same as Row 1

20. Sew Rows 1 and 2 together at the $42\frac{1}{2}$ " edge then sew to the TOP of the Center.

21. Sew Rows 3 and 4 together at the $42\frac{1}{2}$ " edge then sew to the BOTTOM of the Center to finish Border 2 at $42\frac{1}{2}$ " x $51\frac{1}{2}$ ".

Step 4 - Border 3 and Border 4

(Fabrics H is a directional fabric. Please take care when piecing)

22. Sew (1) Fabric F $1\frac{1}{2}$ " x $51\frac{1}{2}$ " rectangles to the left and right sides of the Center, then sew (1) Fabric F $44\frac{1}{2}$ " x $1\frac{1}{2}$ " rectangle to the top and bottom to finish Border 3 at $44\frac{1}{2}$ " x $53\frac{1}{2}$ ".

23. Sew (1) Fabric H $5\frac{1}{2}$ " x $53\frac{1}{2}$ " rectangle to the left and right sides of the Center, then sew (1) Fabric H $54\frac{1}{2}$ " x $5\frac{1}{2}$ " rectangle to the top and bottom to finish Border 4 at $54\frac{1}{2}$ " x $63\frac{1}{2}$ ".

Step 5 - Border 5 and Border 6

(Fabrics J is a directional fabric. Please take care when piecing)

24. Sew (1) Fabric I $1\frac{1}{2}$ " x $63\frac{1}{2}$ " rectangle to the left and right sides of the Center, then sew (1) Fabric I $56\frac{1}{2}$ " x $1\frac{1}{2}$ " rectangle to the top and bottom to finish Border 5 at $56\frac{1}{2}$ " x $65\frac{1}{2}$ ".

25. Sew (1) Fabric J $4\frac{1}{4}$ " x $65\frac{1}{2}$ " rectangle to the left and right sides of the Center, then sew (1) Fabric J 64 " x $4\frac{1}{4}$ " rectangle to the top and bottom to finish the quilt top at 64 " x 73 ".

Step 6 - Finishing the Quilt

26. Layer the directional backing, batting, and quilt top and quilt as desired.

27. Using Fabric I $2\frac{1}{2}$ " strips sew on the binding to finish the quilt.