

NON-SLIP Log Cabin Trim Tool Two

The Log Cabin Ruler features exclusive markings to help you create perfect 12" or 6" finished Log Cabin, Half Log Cabin, or Courthouse Step blocks. Since each round is squared up before the next set of logs are added, the results are spectacular.

Designed by Jean Ann Wright



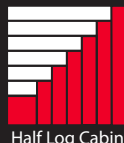
#CGRJAW2
Made in USA



Log Cabin



Courthouse Steps



Half Log Cabin

SEE A DEMO
SCAN WITH ANY
QR READER



Creative Grids® USA, Inc.
400 W. Dussel Dr. Ste B,
Maumee, OH 43537
www.creativegridsUSA.com

Creative Grids® UK, Ltd.
Unit 23A Pate Road
Leicester Road Industrial Estate
Melton Mowbray
Leicestershire, LE13 0RG England
www.creativegrids.com

Creative Grids is covered by U.S. Trademark Registration No. 2,796,615

NON-SLIP Log Cabin Trim Tool Two

Cutting Instructions for Log Cabin, Courthouse Steps, Half Log Cabin Blocks

Block size: 12" or 6" finished

Center squares: For the 12" block cut a precise 3½" square. For the 6" block cut a precise 2" square.

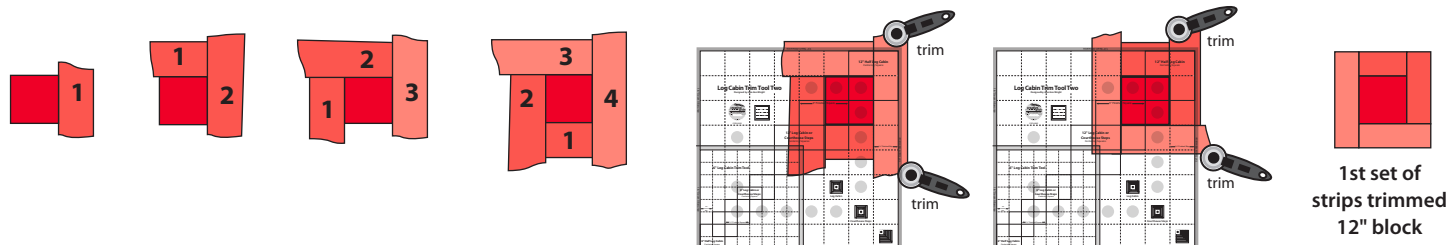
Strips: For the 12" block, cut the strips any width as long as they are at least 2¼" wide. For the 6" block, cut the strips any width as long as they are at least 1½" wide. All strips must have a straight rotary cut edge on one long side. The strip ends and the opposite long side of the strips do not need to be rotary cut, they can be ripped, wavy or angled as the strips will be trimmed after sewing using the Log Cabin Trim Tool Two. Cut all strips slightly longer than needed.

Sewing and Trimming Sequence for the Log Cabin Block

Note: The blocks are constructed by adding each new strip in a clockwise direction. Sew all seams with a scant ¼" seam allowance. As you add each strip, fold the new strip out with the seam allowances towards the outside edge. Press the seams as you sew.

Sewing and trimming the 1st set of strips — 12" blocks

1. With the right side of the 3½" center square facing UP, place a strip that is at least as wide as 2¼" and slightly longer than 3½" on top of the square with the right side facing DOWN. Stitch and press.
2. Turn the center square in a counter-clockwise direction, adding strip #2 in a clockwise direction. Stitch and press.
3. Following the method in step 2, add strips #3 and strips #4. The first set of strips around the center square is ready to trim.
4. Position the Log Cabin Trim Tool Two marked with the large squares, use the 2nd square from the corner square marked on the tool over the center square of the pieced unit. Trim up the right side and across the top. Turn the pieced unit a half turn with untrimmed sides positioned to trim up and across using the same centering square.

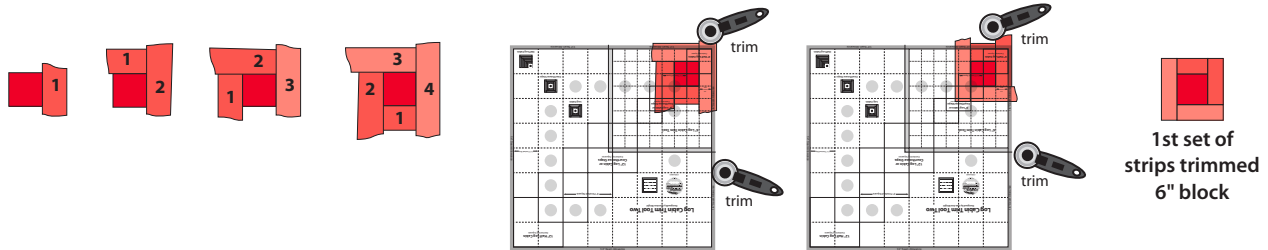


1st set of
strips trimmed
12" block

Sewing and trimming the 1st set of strips — 6" blocks

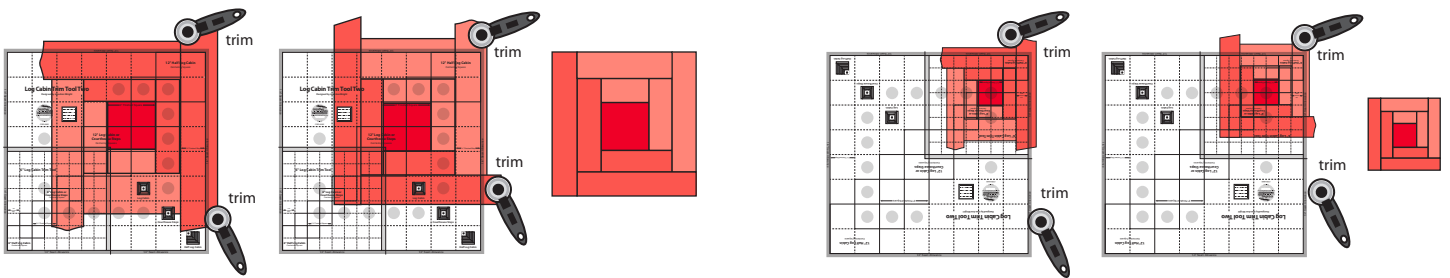
With the right side of the 2" center square facing UP, place a strip that is at least as wide as 1½" and slightly longer than 2" on top of the square with the right side facing DOWN. Stitch and press. Add strips #2 through 4 in the same manner as for the 12" block.

Position the Log Cabin Trim Tool Two marked with the small squares, use the 2nd square from the corner square marked on the tool over the center square of the pieced unit. Trim up the right side and across the top. Turn the pieced unit a half a turn with untrimmed sides positioned to trim up and across using the same centering square.



2nd Set of Log Cabin Strips - 12" and 6" Blocks

Sew a 2nd round of strips around the center square. Trim the block in the same manner as the 1st round using the 3rd marked square from the outside corner to position the trim tool.

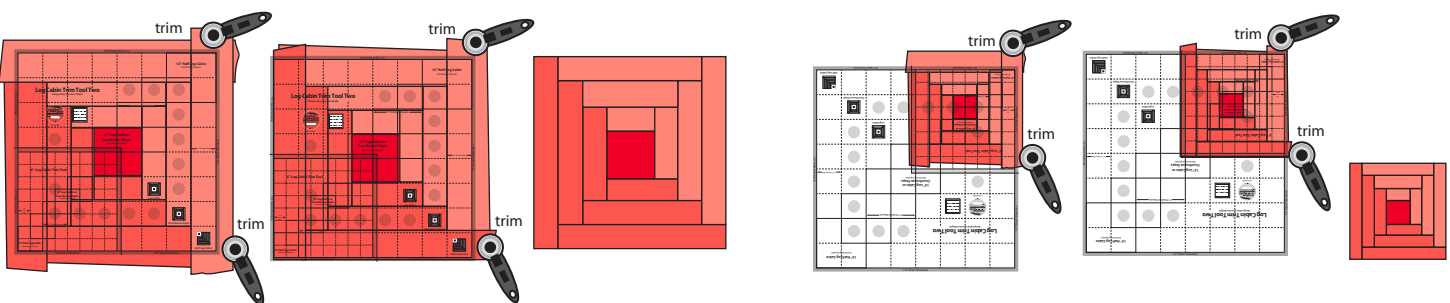


Trimming 2nd round of 12" blocks

Trimming 2nd round of 6" blocks

3rd Set of Log Cabin Strips - 12" and 6" Blocks

Sew a 3rd round of strips around the center square. Trim the block in the same manner as the 1st round using the 4th marked square from the outside corner to position the trim tool.

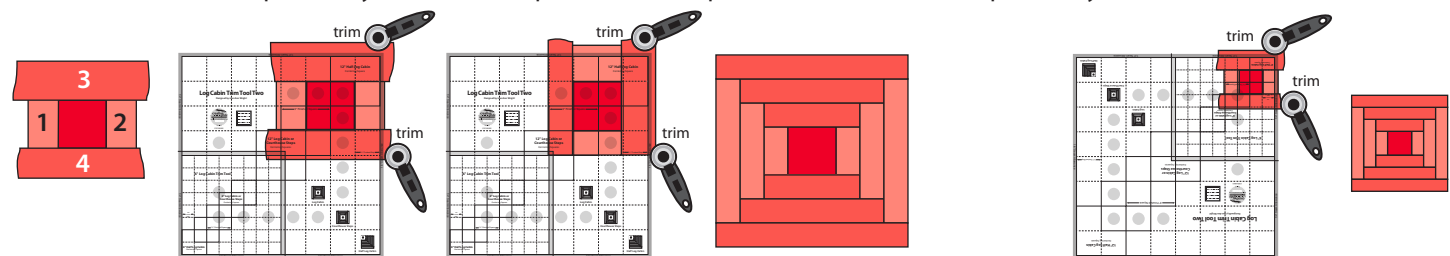


Trimming 3rd round of 12" blocks

Trimming 3rd round of 6" blocks

Sewing and Trimming Sequence for the Courthouse Steps Block

The Courthouse Steps block is similar to the Log Cabin block with the strips added in sequence to opposite sides, then the top and bottom of the center square. As you add the strips fold out and press. Trim each set of strips as they are added.

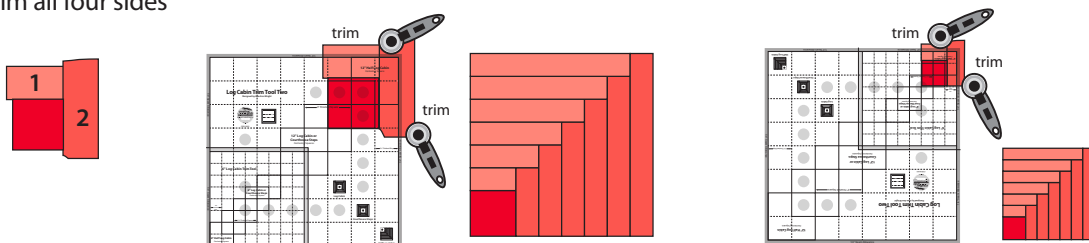


Trimming 12" blocks

Trimming 6" blocks

Sewing and Trimming Sequence for the Half Log Cabin Block

To create a Half Log Cabin block add strips in sequence to two adjacent sides of a 3½" square for the 12" version or a 2" square for the 6" version. Each set of strips is trimmed after sewing. As you add strips fold out and press. Trim each set of strips as they are added. Add five additional sets to make the block. To complete the block, place the corner square on the ruler over the corner square of the block and trim all four sides



Trimming 12" blocks

Trimming 6" blocks