

# Handful of Stars

by Kim Diehl



Finished Quilt Size: 62½" x 62½"

Finished Star Block Size: 8" x 8"

A Free Project Sheet from



Henry Glass & Co., Inc.



49 West 37th Street, New York, NY 10018

tel: 212-686-5194 • fax: 212-532-3525

Toll-free: 800-294-9495

[www.henryglassfabrics.com](http://www.henryglassfabrics.com)

facebook



# Handful of Stars

**Finished Quilt Size: 62½" x 62½"**

**Finished Star Block Size: 8" x 8"**

## Design Notes

*The plaid fabrics included in this project have a smooth, flat finish on one side, and a lightly "peached" finish on the other. As a matter of personal preference, I considered the flat side to be the front of the fabric when stitching my patchwork.*

## Materials

*Yardages are based upon a 42" width of useable fabric after prewashing and removing selvages.*

½ yard each of four assorted cream prints and check for blocks and border #2 (6877-44; 6878-44; 6880-44; 6891Y-44)

15 fat quarters (18" x 21") of assorted prints for blocks, border #2, and border #3 (6874-70, 88; 6875-33, 77; 6876-66; 6878-33, 88; 6879-66; 6880-11, 55; 6881-40; 6882-40, 88; 6883-30, 66)

7 fat quarters of assorted plaids for blocks and border #2 (6884Y-33; 6885Y-77; 6886Y-66; 6887Y-30; 6888Y-33; 6889Y-11; 6890Y-88)

2½ yards of black star print for blocks, border #3, and binding (6883-99)

⅞ yard of brown seaweed flower print for sashing, border #1, and border #3 (6879-33)

⅞ yard of black fancy stripe print for border #2 (6876-99)

4 yards of fabric of choice for backing (Kim suggests the brown seaweed flower print, 6879-33)

69" x 69" square of batting

Freezer paper

Fabric glue stick, water-soluble and acid-free

Standard sewing and quilting supplies

Supplies for your favorite appliqué method

## Cutting

*Cut all pieces across the width of the fabric in the order given unless otherwise noted. For greater ease, cutting instructions for the circle appliqués and half-circle appliqués are provided separately.*

**From each of the 4 assorted cream prints and check, cut:**

62 squares, 2½" x 2½" (combined total of 248)

25 squares, 1½" x 1½" (combined total of 100)

**From the 15 assorted print fat quarters, cut a total of 25 Star patchwork sets, with each set cut from a single print and consisting of the following:**

1 square, 2½" x 2½" (combined total of 25)

8 squares, 1½" x 1½" (combined total of 200)

Keep the Star patchwork sets organized by print.

Reserve the remainder of the 15 assorted print fat quarters.

**From the black star print, cut:**

7 strips, 8½" x 42"; from each of 4 strips, cut 4 squares, 8½" x 8½" (total of 16), and 1 square, 4½" x 4½"

(total of 4). Crosscut the remaining 3 strips into 9

additional squares, 8½" x 8½" (combined total of 25)

7 binding strips, 2½" x 42"

**From the brown seaweed flower print, cut;**

16 strips, 1½" x 42"; crosscut 11 strips into 40 rectangles, 1½" x 8½". Set the remaining 5 strips aside.

Reserve the remainder of the brown seaweed flower print.

**From one short end (not the length) of the fat quarter of teal plaid, cut:**

2 strips, 1½" x 18"; crosscut into 20 squares, 1½" x 1½"

Reserve the remainder of the teal plaid.

**From the reserved remainder of the 15 assorted print fat quarters and the brown seaweed flower print, cut a combined total of:**

144 rectangles, 2" x 4½"

Reserve the scraps of the 15 assorted print fat quarters.

**From the black fancy stripe print, cut:**

6 strips, 4½" x 42"; crosscut into 12 rectangles, 4½" x 9½", 8 rectangles, 4½" x 10", and 4 squares, 4½" x 4½"

## Piecing and Preparing the Star Blocks

*Sew all pieces with right sides together and a ¼" seam allowance unless otherwise noted. Press the seam allowances as indicated by the arrows*

- 1 Select one Star patchwork set (consisting of one 2½" square and eight 1½" squares) cut from a single assorted print. Use a pencil and an acrylic ruler to draw a diagonal sewing line from corner to corner on the wrong side of each 1½" square.

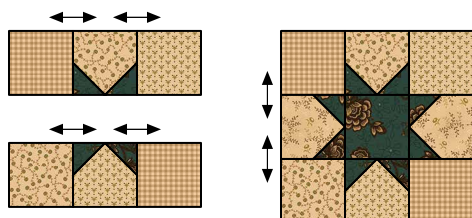
- 2 Choosing the cream prints randomly, select four assorted cream  $2\frac{1}{2}$ " squares. Layer a prepared  $1\frac{1}{2}$ " square onto one corner of a cream  $2\frac{1}{2}$ " square. Stitch the pair together along the drawn diagonal line. Fold the resulting inner triangle open, aligning the corner with the corner of the cream square. Press. Trim away the layers beneath the top triangle, leaving a  $\frac{1}{4}$ " seam allowance. In the same manner, add a mirror-image triangle to the adjacent corner of the cream square. Repeat for a total of four pieced star point units measuring  $2\frac{1}{2}$ " square, including the seam allowances.



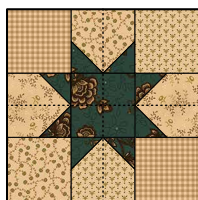
- 3 Join a star point unit to two opposite sides of a matching star print  $2\frac{1}{2}$ " square. Press.



- 4 Choosing the cream prints randomly, join an assorted cream  $2\frac{1}{2}$ " square to each end of the remaining two pieced star point units. Press. Join these pieced units to the remaining sides of the step 3 star unit. Press. (Be sure to press the seams as indicated in the illustration, as this will minimize bulk and streamline the appliqué steps.)



- 5 To prepare the block for the appliqué process, fold it in half, right sides together, and use a hot, dry iron to lightly press a center vertical crease at the top and bottom block edges. In the same manner, add center horizontal creases.

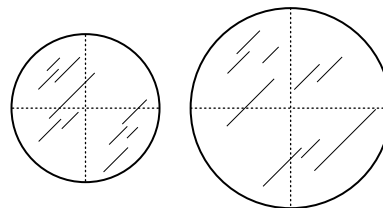


- 6 Repeat steps 1–5 for a total of 25 pieced and prepared Star blocks measuring  $6\frac{1}{2}$ " square, including the seam allowances. Reserve the remaining assorted cream  $2\frac{1}{2}$ " squares.

## Appliquing the Star Blocks

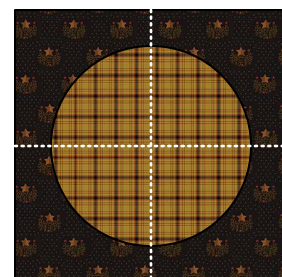
*The large and small circle appliqué patterns are provided on page 6.*

- 1 Use a pencil and scissors to trace and cut 25 *each* of the large and small circles from freezer paper. (Be sure to cut the circles on the drawn lines, as the seam allowances will be added later when the appliqués are cut from fabric). Fold each large and small circle in half and finger press the center vertical crease. Repeat to add a horizontal crease to each circle. Set the small circle pattern pieces aside for later use.

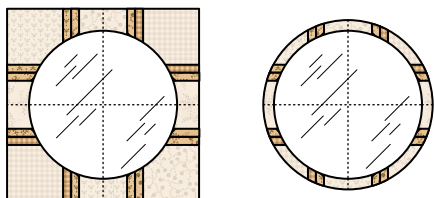


Prepare 25 each  
from freezer paper.

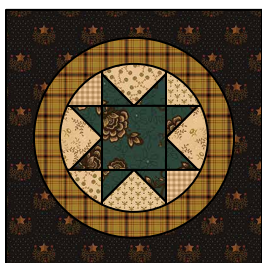
- 2 With right sides together, use a hot, dry iron to press a center vertical and horizontal crease onto each black star  $8\frac{1}{2}$ " square as previously instructed.
- 3 Apply a few swipes of fabric glue stick to the dull side of a large circle pattern piece, keeping the glue at least 1" in from the edge. Affix the pattern piece to the wrong (peached) side of an assorted plaid fat quarter. Use a rotary cutter and mat to cut out the large circle shape, adding an approximate  $\frac{1}{4}$ " seam allowance. Repeat using all assorted plaid fat quarters, and the reserved remainder of the teal plaid, for a total of 25 large circle appliqués. Reserve the scraps of all assorted plaids.
- 4 Use a hot, dry iron to press the seam allowance of each large circle appliqué onto the waxy side of the freezer paper pattern piece (the waxy surface will hold the cloth in place).
- 5 Align the vertical and horizontal creases of a step 4 large circle appliqué with the pressed creases of a black star  $8\frac{1}{2}$ " square to perfectly center it. Pin or baste in place. Use your favorite method to stitch the large circle appliqué to the black square. Cut away the black fabric underneath the appliqué circle, leaving a  $\frac{1}{4}$ " seam allowance, and remove the paper pattern piece. Repeat for a total of 25 appliquéed black squares.



- 6 Apply a few swipes of fabric glue stick to the dull side of a reserved small circle paper pattern piece as previously instructed. Align the creases of the small circle pattern piece, glued side down, with the creases of the Star block to perfectly center it; affix the pattern piece in place. Use a rotary cutter as previously instructed to cut out the circle shape, adding a generous  $\frac{1}{4}$ " seam allowance. Repeat with the remaining Star blocks for a total of 25 star circle appliques.



- 7 Use a hot, dry iron to press the seam allowance of each star circle applique onto the pattern piece and prepare it for stitching.
- 8 Center, baste, and stitch a prepared star circle applique onto a step 5 appliquéd black square. Remove the paper pattern piece. Repeat for a total of 25 appliquéd Star blocks measuring  $8\frac{1}{2}$ " square, including the seam allowances.



Make 25.

## Completing the Star Block Patchwork

- 1 Draw a diagonal sewing line on the wrong side of each cream  $1\frac{1}{2}$ " square and each cream  $2\frac{1}{2}$ " square as previously instructed. Set the prepared cream  $2\frac{1}{2}$ " squares aside for later use.
- 2 Layer, stitch, press, and trim a prepared cream  $1\frac{1}{2}$ " square onto each corner of an appliquéd Star block as previously instructed. Repeat for a total of 25 completed Star blocks measuring  $8\frac{1}{2}$ " square, including the seam allowances.



Make 25.

## Piecing the Quilt Center

- 1 Using the pictured quilt as a guide, lay out five brown seaweed flower  $1\frac{1}{2}$ " x  $8\frac{1}{2}$ " rectangles and four teal  $1\frac{1}{2}$ " squares in alternating positions. Join the pieces. Press the seam allowances toward the brown rectangles. Repeat for a total of four pieced sashing rows measuring  $1\frac{1}{2}$ " x  $44\frac{1}{2}$ ", including the seam allowances. Reserve the four remaining teal  $1\frac{1}{2}$ " squares for later use.
- 2 Using the pictured quilt as a guide, lay out five completed Star blocks and four brown seaweed flower  $1\frac{1}{2}$ " x  $8\frac{1}{2}$ " rectangles in alternating positions. Press the seam allowances toward the brown rectangles. Repeat for a total of five pieced block rows measuring  $8\frac{1}{2}$ " x  $44\frac{1}{2}$ ", including the seam allowances.
- 3 Referring to the pictured quilt, lay out the five pieced block rows and the four pieced sashing rows in alternating positions. Join the rows. Press the seam allowances toward the sashing rows. The pieced quilt center should now measure  $44\frac{1}{2}$ " square, including the seam allowances.

## Adding Border #1

- 1 Join the five brown seaweed flower  $1\frac{1}{2}$ " x 42" strips to make one length. Press the seam allowances to one side. From this pieced strip, cut four strips,  $1\frac{1}{2}$ " x  $44\frac{1}{2}$ ".
- 2 Join a brown  $1\frac{1}{2}$ " x  $44\frac{1}{2}$ " strip to the right and left side of the quilt center. Press the seam allowances away from the quilt center. Join a reserved teal  $1\frac{1}{2}$ " square to each end of the remaining brown  $1\frac{1}{2}$ " x  $44\frac{1}{2}$ " strips. Press the seam allowances toward the brown print. Join these pieced strips to the remaining sides of the quilt center. Press the seam allowances away from the quilt center. The pieced quilt top should now measure  $46\frac{1}{2}$ " square, including the seam allowances.

## Appliquing, Piecing, and Adding Border #2

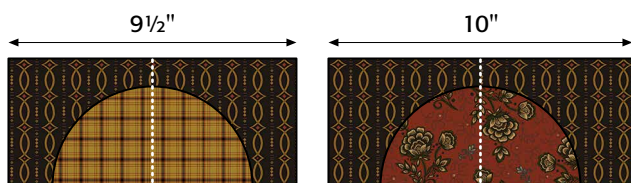
*The large and small half-circle applique patterns are provided on page 6.*

- 1 Using the reserved remainder of the 15 assorted print fat quarters, and the reserved scraps of all assorted plaids, cut and prepare a total of 20 large and 20 small half-circle appliques as instructed in steps 3–4 of "Appliquing the Star Blocks" on page 3. Do not press the seam allowances of the half circles along the straight edges.



2 Fold each prepared large and small half-circle appliqué in half and finger press a center vertical crease. Press a center vertical crease into each black fancy stripe  $4\frac{1}{2}$ " x  $9\frac{1}{2}$ " and  $4\frac{1}{2}$ " x 10" rectangle as previously instructed.

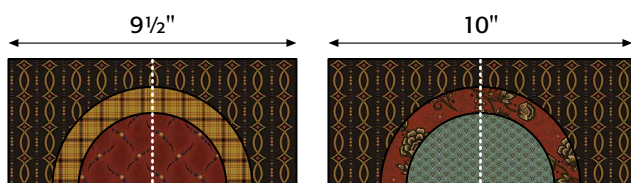
3 Align the vertical creases to position, baste, and stitch a prepared large half-circle appliqué onto each  $9\frac{1}{2}$ "- and 10"-long black stripe rectangle, with the bottom straight edges flush. Remove the paper pattern pieces.



Make 12.

Make 8.

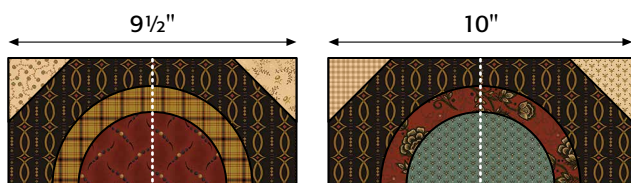
4 Position, baste, and stitch a prepared small half-circle appliqué onto each step 3 rectangle. Remove the paper pattern pieces.



Make 12.

Make 8.

5 Layer, stitch, press, and trim a reserved prepared cream  $2\frac{1}{2}$ " square onto two adjacent corners of each step 4 appliquéd rectangle as previously instructed.



Make 12.

Make 8.

6 Layer, stitch, press, and trim two prepared cream  $2\frac{1}{2}$ " squares onto two opposite corners of a black stripe  $4\frac{1}{2}$ " square as shown. Repeat for a total of two pieced black corner squares and two pieced black mirror-image corner squares measuring  $4\frac{1}{2}$ " square, including the seam allowances.



Make 2 each.

7 Using the pictured quilt as a guide, join three pieced and appliquéd black  $9\frac{1}{2}$ "-long rectangles end to end. Press the seam allowances open. Repeat for a total of four pieced border #2 units measuring  $4\frac{1}{2}$ " x  $27\frac{1}{2}$ ", including the seam allowances.

8 Referring to the pictured quilt, stitch a pieced and appliquéd black  $10\frac{1}{2}$ "-long rectangle to each end of the step 7 pieced border #2 units. Press the seam allowances open. Repeat for a total of four pieced border #2 rows measuring  $4\frac{1}{2}$ " x  $46\frac{1}{2}$ ", including the seam allowances.

9 Join a pieced border #2 row to the right and left side of the quilt top. Press the seam allowances toward the quilt center. Using the pictured quilt as a guide, join a step 6 pieced black corner square and a pieced black mirror-image corner square to each end of the remaining pieced border #2 rows. Press the seam allowances open. Join these pieced rows to the remaining sides of the quilt top. Press the seam allowances toward the quilt center. The quilt top should now measure  $54\frac{1}{2}$ " square, including the seam allowances.

## Piecing and Adding Border #3

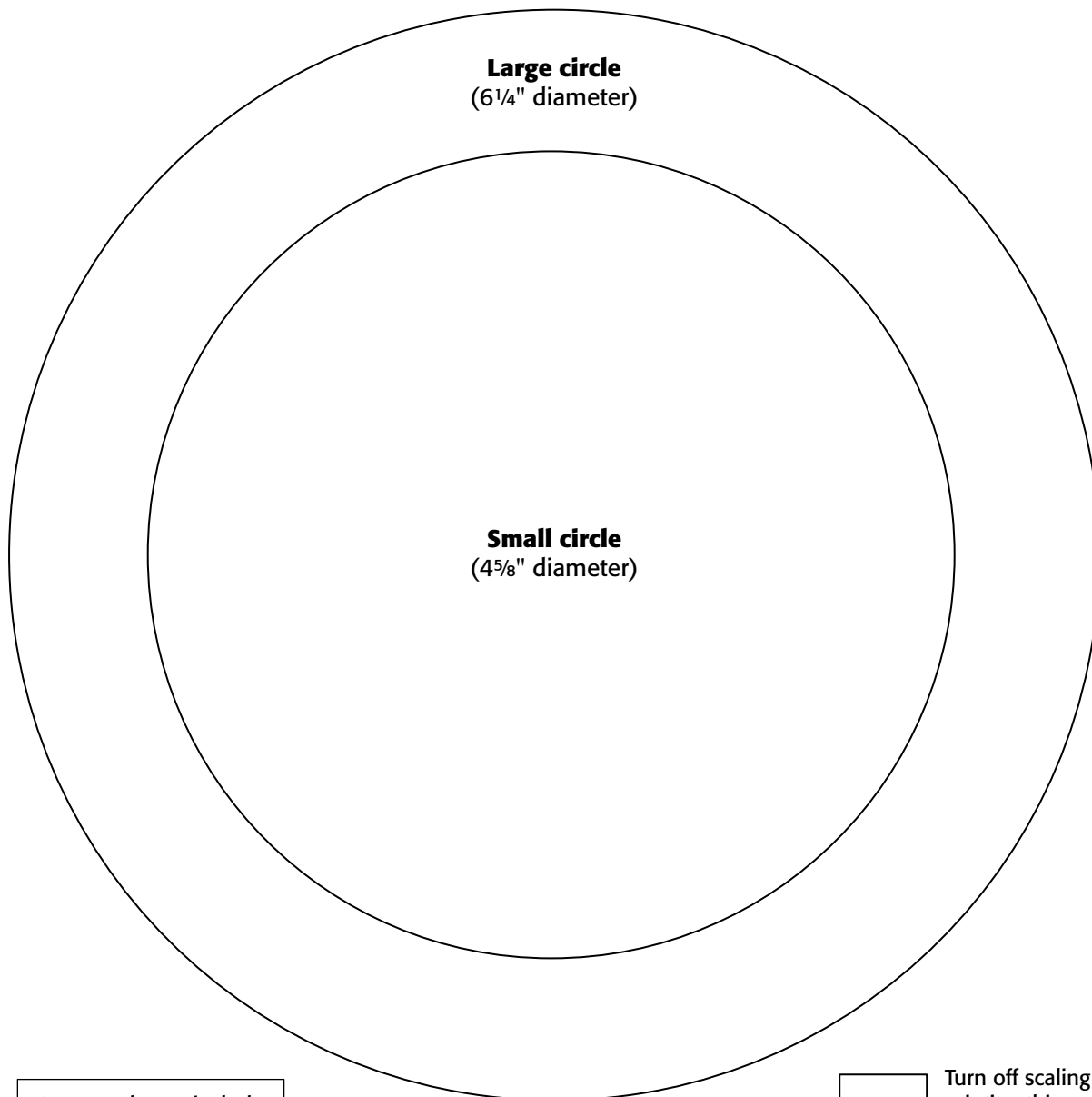
1 Choosing the assorted prints randomly, join 36 assorted print  $2$ " x  $4\frac{1}{2}$ " rectangles along the long edges. Press the seam allowances to one side. Repeat for a total of four pieced border #3 rows measuring  $4\frac{1}{2}$ " x  $54\frac{1}{2}$ ", including the seam allowances.

2 Join a pieced border #3 row to the right and left side of the quilt top. Press the seam allowances away from the quilt center. Join a black star  $4\frac{1}{2}$ " square to each end of the remaining pieced border #3 rows. Press the seam allowances away from the black squares. Join these pieced row units to the remaining sides of the quilt top. Press the seam allowances away from the quilt center.

## Completing the Quilt

Layer and baste the quilt top, batting, and backing. Quilt the layers. Join the black star binding strips to make one length and use it to bind the quilt.

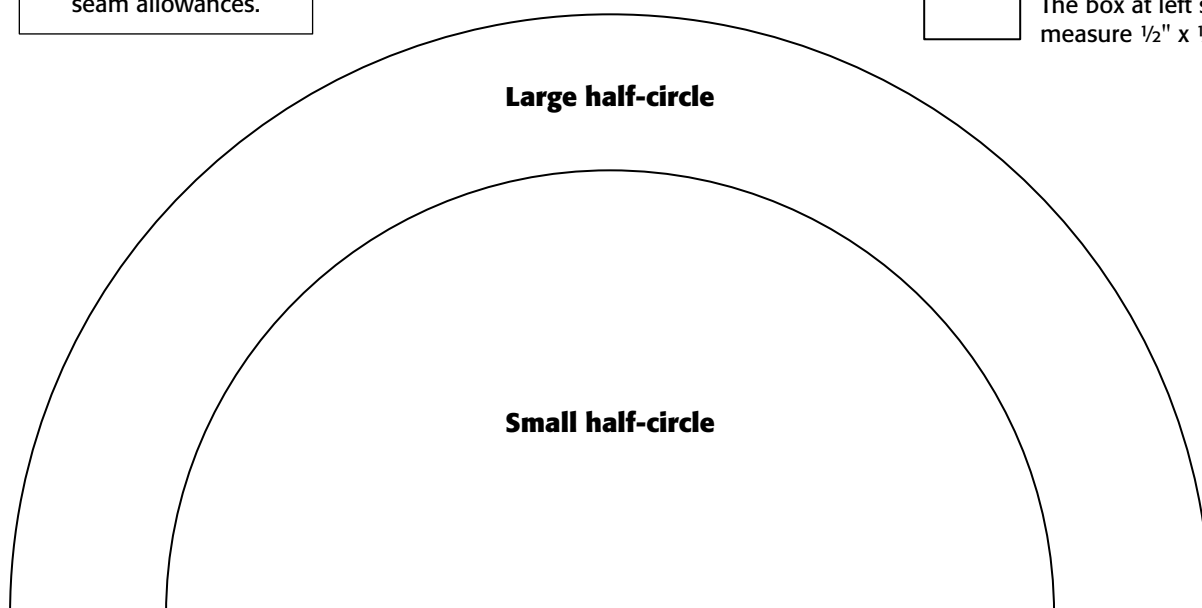
Every effort has been made to ensure that all projects are error free. All the information is presented in good faith, however no warranty can be given nor results guaranteed as we have no control over the execution of instructions. Therefore, we assume no responsibility for the use of this information or damages that may occur as a result. When errors are brought to our attention, we make every effort to correct and post a revision as soon as possible. Please make sure to check [www.henryglassfabrics.com](http://www.henryglassfabrics.com) for pattern updates prior to starting the project. We also recommend that you test the project prior to cutting for kits. Finally, all free projects are intended to remain free to you and are not for resale.



Patterns do not include  
seam allowances.



Turn off scaling when  
printing this page.  
The box at left should  
measure  $\frac{1}{2}$ " x  $\frac{1}{2}$ ".



# Helping Hands Fabrics in the Collection



6874-70



6874-88



6875-33



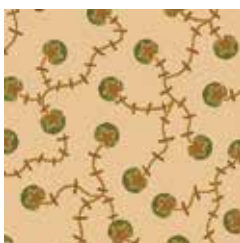
6875-77



6876-66



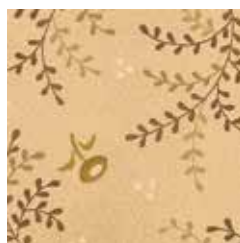
6876-99



6877-44



6878-33



6878-44



6878-88



6879-33



6879-66



6880-11



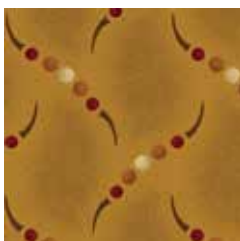
6880-44



6880-55



6881-40



6882-40



6882-88



6883-30



6883-66



6883-99



6884Y-33



6885Y-77



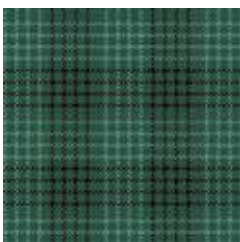
6886Y-66



6887Y-30



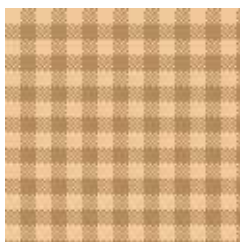
6888Y-33



6889Y-11



6890Y-88



6891Y-44

