



quilting  
treasures

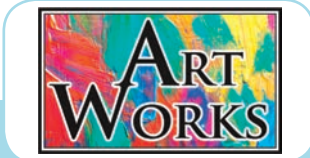
IMAGINE & CREATE

Magical

SIZE 44" X 52"



Designed by: Heidi Pridemore of The Whimsical Workshop





26243-B

KIT CALCULATIONS		
Quilt		12 KITS
Size: 44" x 52"	YARDS	BOLTS
26243-B	1 panel	1
23528-LE	$\frac{3}{8}$	1
23528-K (includes binding)	$\frac{7}{8}$	1
23528-BE	$\frac{1}{3}$	1
23528-N	$\frac{1}{3}$	1
26244-BZ (Backing)	$3 \frac{1}{2}$	4

**Cutting Directions:**

Note: All strips are cut across the width of the fabric (perpendicular to selvages) unless noted otherwise.

WOF = Width of fabric from selvaige to selvaige

**A. 26243-B: Magical Panel - Blue**

- Fussy cut one  $34 \frac{1}{2}$ " x  $42 \frac{1}{2}$ " panel.

**B. 23528-LE: Color Blends — Iris**

- Cut three 2" x WOF strips. Sew the strips together end to end with diagonal seams and cut two 2" x  $42 \frac{1}{2}$ " strips.
- Cut two 2" x  $37 \frac{1}{2}$ " strips.

**C. 23528-K: Color Blends — Graphite**

- Cut three  $2 \frac{1}{2}$ " x WOF strips. Sew the strips together end to end with diagonal seams and cut two  $2 \frac{1}{2}$ " x  $44 \frac{1}{2}$ " strips.
- Cut two  $2 \frac{1}{2}$ " x  $40 \frac{1}{2}$ " strips.
- Cut five  $2 \frac{1}{2}$ " x WOF strips for the binding.

**D. 23528-BE: Color Blends — Sky Blue**

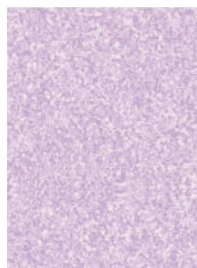
- Cut three  $2 \frac{1}{2}$ " x WOF strips. Sub-cut strips into twenty-two  $2 \frac{1}{2}$ " x  $4 \frac{1}{2}$ " strips.

**E. 23528-N: Color Blends — Indigo**

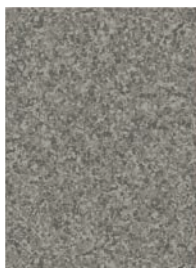
- Cut three  $2 \frac{1}{2}$ " x WOF strips. Sub-cut strips into twenty-two  $2 \frac{1}{2}$ " x  $4 \frac{1}{2}$ " strips and four  $2 \frac{1}{2}$ " squares.

**Backing 26244-BZ: Magical Scenic — Blue/White**

- Cut two 60" x WOF strips. Sew together and trim to make one 52" x 60" back.



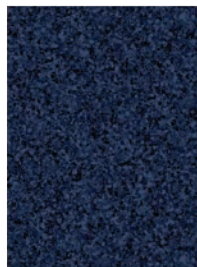
23528-LE



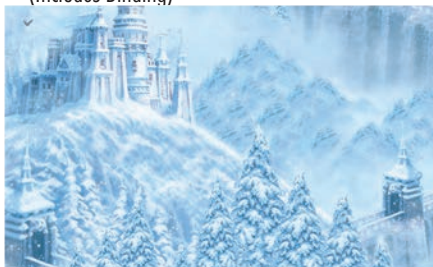
23528-K  
(Includes Binding)



23528-BE



23528-N



26244-BZ  
(Backing)

### Block Assembly:

1. Sew one 2" x 42 1/2" Fabric B strip to each side of the Fabric A panel. Sew one 2" x 37 1/2" Fabric B strip to the top and to the bottom of the Fabric A panel to make the Center Block. Trim the Center Block to measure 36 1/2" x 44 1/2" (Fig. 1)

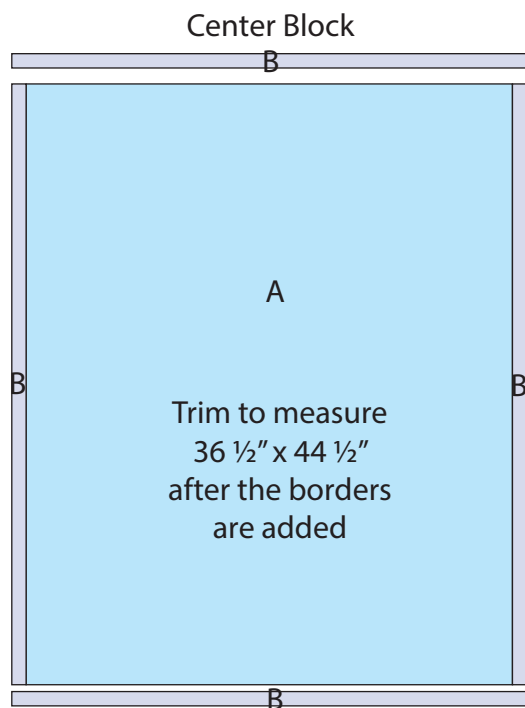
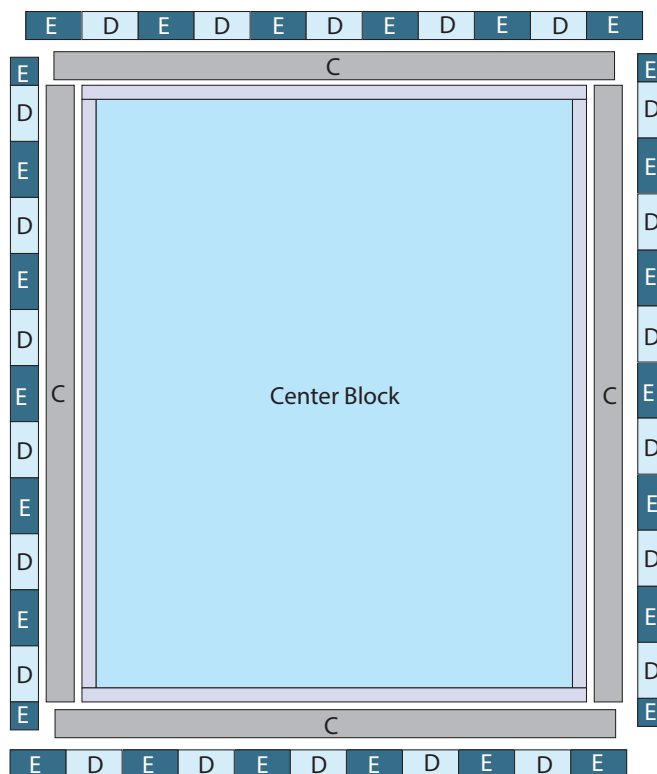


Fig. 1

### Quilt Assembly:

(Refer to the Quilt Layout while assembling the quilt top.)

2. Sew one 2 1/2" x 44 1/2" Fabric C strip to each side of the Center Block. Sew one 2 1/2" x 40 1/2" Fabric C strip to the top and to the bottom of the Center Block.
3. Sew two 2 1/2" Fabric E squares, six 2 1/2" x 4 1/2" Fabric D strips and five 2 1/2" x 4 1/2" Fabric E strips together to make one side border strip. Repeat to make a second side border strip. Sew one side border strip to each side of the Center Block.
4. Sew six 2 1/2" x 4 1/2" Fabric E strips and five 2 1/2" x 4 1/2" Fabric D strips together, alternating them, to make the top border strip. Repeat to make the bottom border strip. Sew the border strips to the top and to the bottom of the Center Block to make the quilt top.



Quilt Layout

### Finishing:

5. Layer quilt top, batting and backing; baste, quilt as desired. Trim layers even with quilt top.
6. Sew the five 2 1/2 x WOF Fabric C strips together, end to end with 45-degree seams, to make the binding. Fold this long strip in half, lengthwise with wrong sides together, and press.
7. Bind as desired.