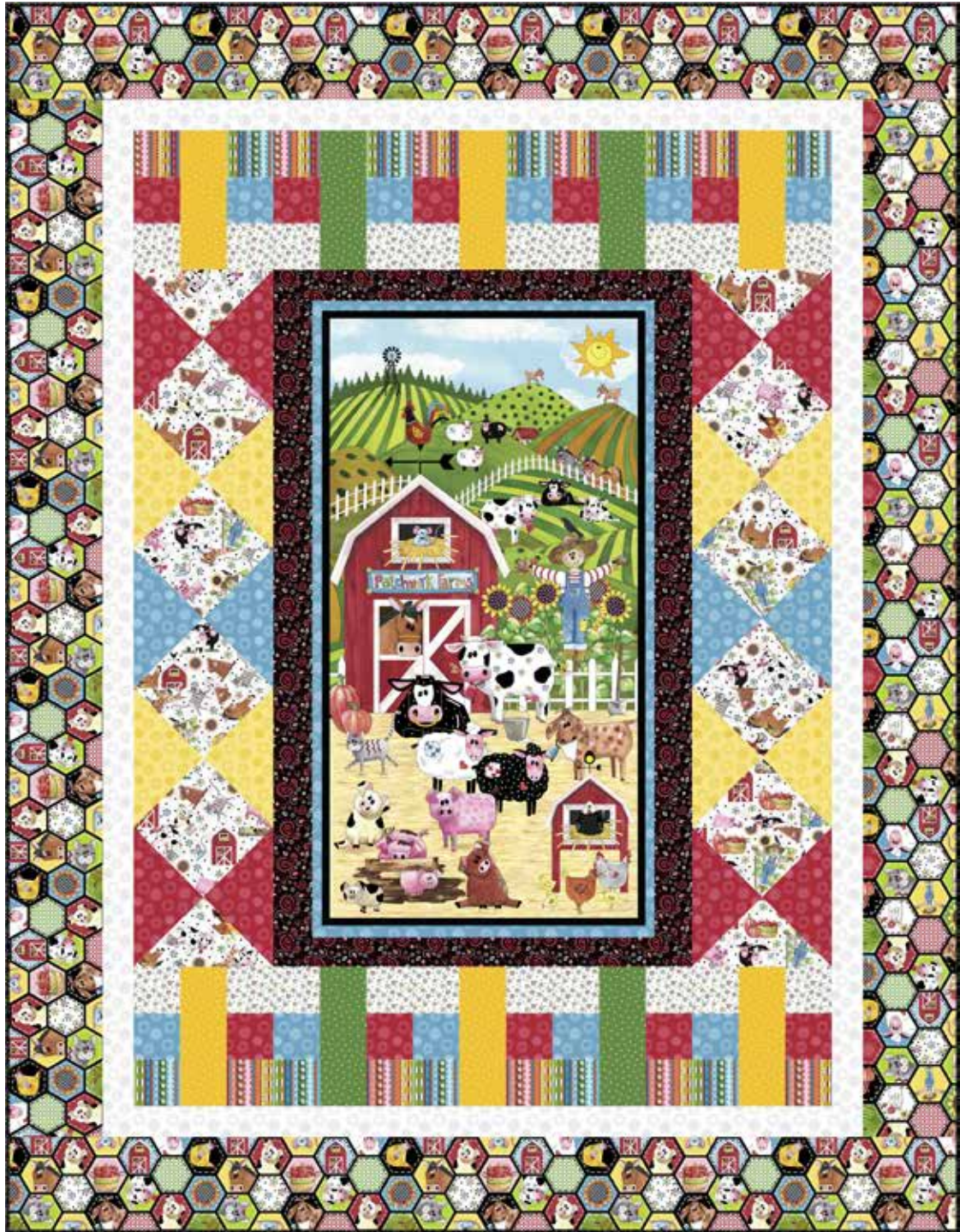
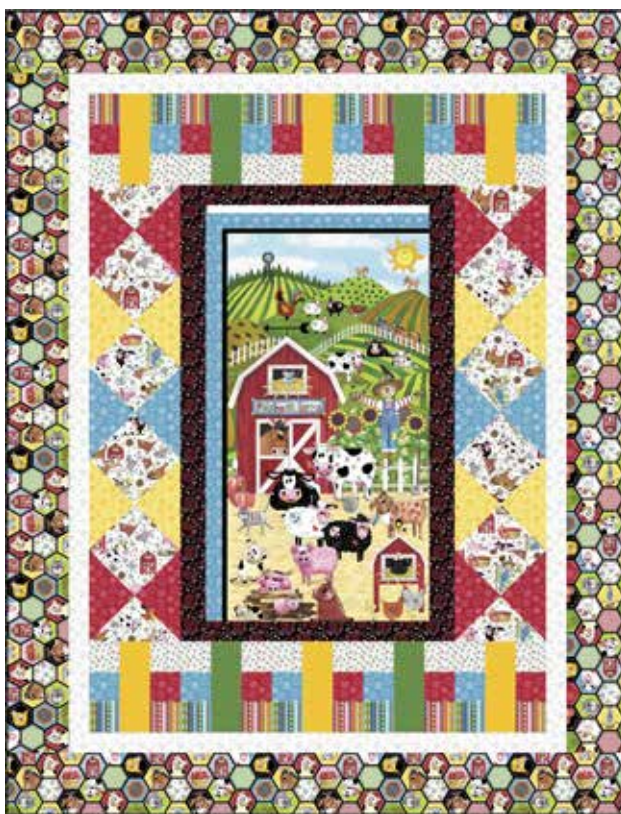


61½" x 79½"





Finished Size: 61½" x 79½"

FABRIC REQUIREMENTS

	26107 X 1 PANEL		26108 J 2⅛ YARD		26109 Z ⅔ YARD		26110 J ½ YARD
	1 BOLT		2 BOLT		1 BOLT		1 BOLT
	26111 J binding only ⅔ YARD		26111 Z ¼ YARD		26112 B ⅔ YARD		26112 R ⅔ YARD
	1 BOLT		1 BOLT		1 BOLT		1 BOLT
	26112 S ⅔ YARD		26112 Z ½ YARD		26113 B ⅛ YARD		26113 R ⅛ YARD
	1 BOLT		1 BOLT		1 BOLT		1 BOLT
	26114 G ⅛ YARD		26114 S ¼ YARD		26110 R backing only 5 YARDS		
	1 BOLT		1 BOLT		4 BOLT		

* Numbers within gray box = Number of Bolts needed to make 12 Kits

We recommend that you carefully read through all instructions before getting started on your project.

CUTTING DIRECTIONS

9" F Blocks

Fabric A. 26107 X

- Cut panel $\frac{1}{4}$ " beyond printed motif. Should be approx. $22\frac{1}{2}$ " x $41\frac{1}{2}$ ".

Fabric B. 26108 J (hexagon print)

- Outer Borders: cut (4) $6\frac{1}{2}$ " x WOF strips x LOF. Cut (2) $6\frac{1}{2}$ " x $67\frac{1}{2}$ " (sides) and (2) $6\frac{1}{2}$ " x $61\frac{1}{2}$ " top and bottom.

Fabric C. 26109 Z (white tossed animal print)

- Cut (2) $10\frac{1}{4}$ " x WOF strips. Cut (5) $10\frac{1}{4}$ " squares. Cut each square diagonally in both directions to yield twenty quarter-square triangles.

Fabric D. 26110 J (black paisley)

- Cut (2) $3\frac{1}{2}$ " x WOF strips for sides frames and (2) 3" frames for top and bottom frames.

Fabric E. 26111 J (black mini posey)

- Cut (8) $2\frac{1}{2}$ " x WOF strips for binding.

Fabric F. 26111 Z (white mini posey)

- Cut (2) $3\frac{1}{2}$ " x WOF strips.

Fabric G. 26112 B (blue tonal flower)

- Cut (1) $10\frac{1}{4}$ " x WOF strip. Cut (1) $10\frac{1}{4}$ " square. Cut square diagonally in both directions to yield four quarter-square triangles.

Fabric H. 26112 R (red tonal flower)

- Cut (1) $10\frac{1}{4}$ " x WOF strip. Cut (2) $10\frac{1}{4}$ " squares. Cut squares diagonally in both directions to yield eight quarter-square triangles.

Fabric I. 26112 S (yellow tonal flower)

- Cut (1) $10\frac{1}{4}$ " x WOF strip. Cut (2) $10\frac{1}{4}$ " squares. Cut squares diagonally in both directions to yield eight quarter-square triangles.

Fabric J. 26112 Z (white tonal flower)

- Cut (6) $2\frac{1}{2}$ " x WOF strips for inner border. Sew strips together end to end with diagonal seams; press. Use pieced strip to cut (2) $2\frac{1}{2}$ " x $63\frac{1}{2}$ " (sides) and (2) $2\frac{1}{2}$ " x $49\frac{1}{2}$ " top and bottom.

Fabric K. 26113 B (blue stripe)

- Cut (1) $3\frac{1}{2}$ " x WOF strip.

Fabric L. 26113 R (red stripe)

- Cut (1) $3\frac{1}{2}$ " x WOF strip.

Fabric M. 26114 G (green dot)

- Cut (1) $3\frac{1}{2}$ " x WOF strip. Sub cut (4) $3\frac{1}{2}$ " x $9\frac{1}{2}$ " rectangles

Fabric N. 26114 S (yellow dot)

- Cut (2) $3\frac{1}{2}$ " x WOF strips. Sub cut (6) $3\frac{1}{2}$ " x $9\frac{1}{2}$ " rectangles

CONSTRUCTION

Quarter-Square-Triangle Blocks:

1. Refer to quilt image to create blocks.

"Fence Blocks"

1. Sew one $3\frac{1}{2}$ " strip of red stripe, red tonal flower and white mini posey together to create strip set #1. Press; subcut ten $3\frac{1}{2}$ " segments.
2. Repeat above using blue stripe, blue tonal flower and white mini posey to make strip set #2.
3. Join segments together per quilt image to create blocks.

ASSEMBLY

1. Center and sew side frames to panel. Trim ends and press. Center/sew top and bottom frames to panel. Trim ends and press.
2. Trim framed panel to measure $27\frac{1}{2}$ " x $45\frac{1}{2}$ ".
3. Refer to quilt image to sew blocks to sides; press. Sew blocks to top and bottom; press.
4. Sew white inner frames to panel; press.
5. Sew outer border to quilt; press.

While all possible care has been taken to ensure the accuracy of this pattern, we are not responsible for printing errors or the way in which individual work varies.