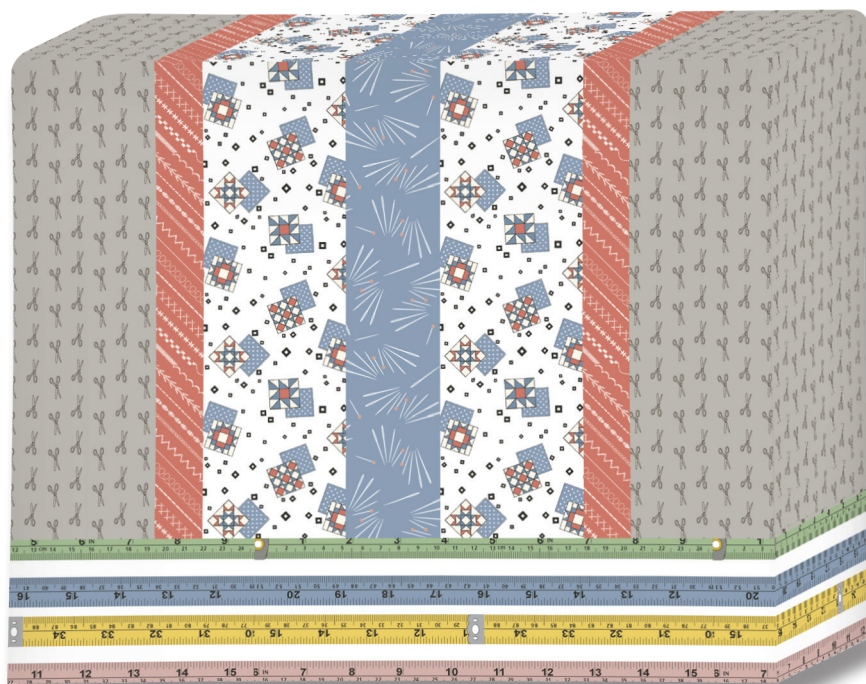


Sew Special - Sewing Machine Cover

Designed by Heidi Pridemore of The Whimsical Workshop
Featuring the Take Me Home Collection by Whistler Studios

Pattern by Heidi Pridemore

Cover Size: 16" x 13" x 5"



Please Note: Quilt Image shown is a digital representation, fabric look may vary on your project. Check www.windhamfabrics.com Free Project section online to see if there are any pattern updates before you start your quilt project.



WINDHAM FABRICS

812 Jersey Ave – Jersey City, NJ 07310 – 201.659.0444 ~ FAX: 201.659.9719
www.windhamfabrics.com email: retail@windhamfabrics.com

Sew Special - Sewing Machine Cover

Page 2

Estimated Fabric Requirements:

¼ yard – 43251-X Multi

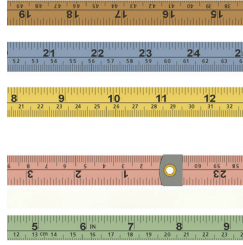
½ yard – 43256-1 Grey

⅛ yard – 43255-3 Coral

¼ yard – 43252-2 Blue

⅛ yard – 43253-2 Blue

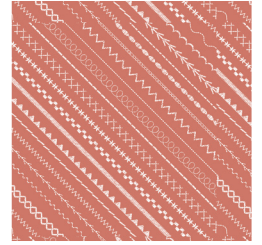
⅝ yard – 43254-3 Coral



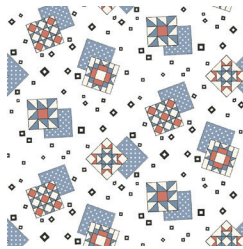
43251-X Multi (A)



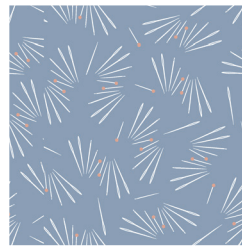
43256-1 Grey (B)



43255-3 Coral (C)



43252-2 Blue (D)



43253-2 Blue (E)



43254-3 Coral (F)

Cutting Instructions:

Fabric A: Rulers – Multi

- Cut two 3 ½" x 21 ½" strips.

Fabric B: Scissors – Grey

- Cut two 6" x WOF strips. Sub-cut into four 6" x 13" strips.

Fabric C: Stitches – Coral

- Cut two 1 ½" x WOF strips. Sub-cut into four 1 ½" x 13" strips.

Fabric D: Blocks – Blue

- Cut two 3 ½" x WOF strips. Sub-cut into four 3 ½" x 13" strips.

Fabric E: Pins – Blue

- Cut one 2 ½" x WOF strips. Sub-cut into two 2 ½" x 13" strips.

Fabric F: Buttons – Coral

- Cut one 21 ½" x WOF strip. Sub-cut into two 16 ½" x 21 ½" strips.

You will also need:

Fusible Fleece

- (2) 16 ½" x 21 ½" strips.



WINDHAM FABRICS

www.windhamfabrics.com

Sew Special - Sewing Machine Cover

Page 3

Cover Assembly:

1. Sew together two 6" x 13" Fabric B strips, two 1 1/2" x 13" Fabric C strips, two 3 1/2" x 13" Fabric D strips and one 2 1/2" x 13" Fabric E strip. Sew one 3 1/2" x 21 1/2" Fabric A strip to the bottom of the sewn unit to make Unit 1 (Fig. 1). Repeat to make a second Unit 1.
2. Press each Unit 1 to one 16 1/2" x 21 1/2" piece of Fusible Fleece and quilt as desired.
3. Place the two Unit 1 pieces, right sides together. Sew down each side and across the top to make the outer cover.
4. Place the two 16 1/2" x 21 1/2" Fabric F pieces, right sides together. Sew down each side and across the top. Leaving a 4" opening for turning, to make the lining.
5. Measure in from the side edge 3" and down from the top edge 3" at each top lining corners. Cut out the square of fabric (Fig. 2). Open the cut top and align the top edge with the side edge and sew the two edges together to make a box corner (Fig. 3). Repeat with the other top corner to make the box top. Repeat with the outer cover.
6. Place the outer cover, right sides together with the lining, aligning the bottom raw edges of the outer cover and lining, pin together. Sew the lining and cover together. Turn the outer cover and lining right side out through the opening in the lining. Press as needed and top stitch the open closed. Put the lining into the cover, aligning the sides and bottom. Press seams to complete the cover (Fig. 4).

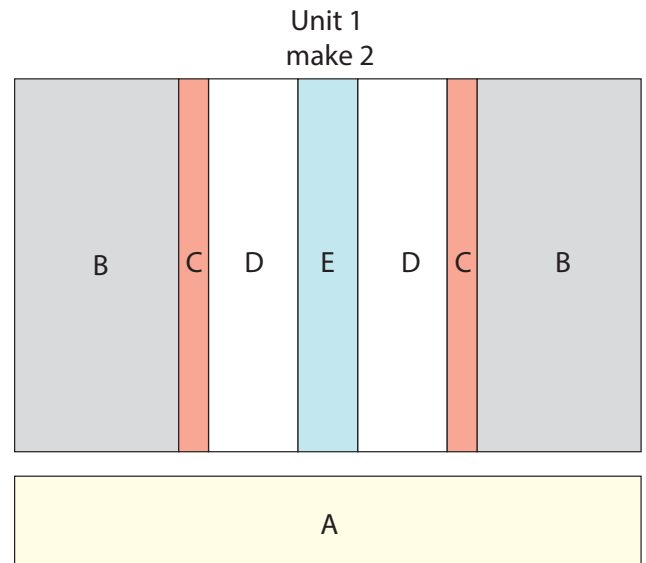


Fig. 1

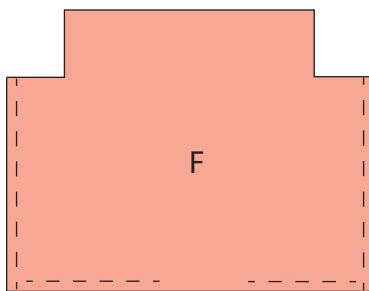


Fig. 2

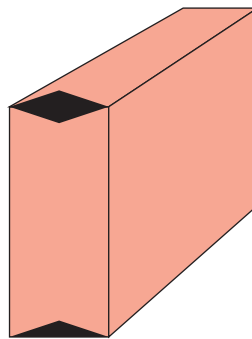


Fig. 3

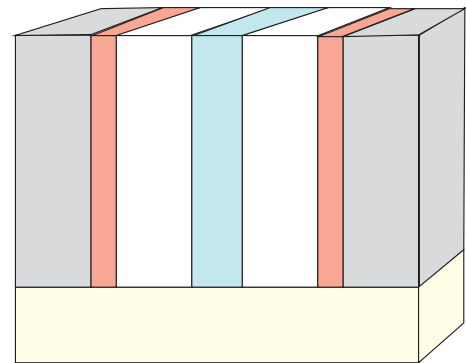


Fig. 4

Be sure to visit www.windhamfabrics.com to see the complete collection and to download this and other FREE Projects