



BEGINNER | 1 DAY CLASS

SIMPLE PATH

Finished Quilt: 64" x 64"

Quilt design by
Lyn Brown

Featuring Dream Big and Grand Blooms Spectrum Digital prints and Bali Watercolors, showcase this breathtaking digital print with our photo realistic bouquet. Lyn's pattern makes it easy to create your own floral arrangement.



P4389 94- Wild Rose



P4371 333- Peony



1895 391- Blush



1895 404- Bubblegum

Hoffman
Spectrum Digital



FABRICS	1 KIT
P4371 333-Peony	1 1/4 Yards
P4389 94-Wild Rose	1 Panel
1895 391-Blush	1 1/2 Yards
1895 404-Bubblegum	5/8 Yard*

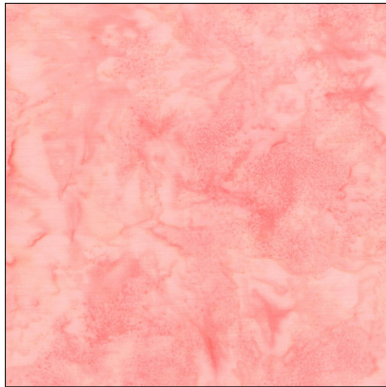
*binding

FREE PATTERN DOWNLOAD
hoffmanfabrics.com

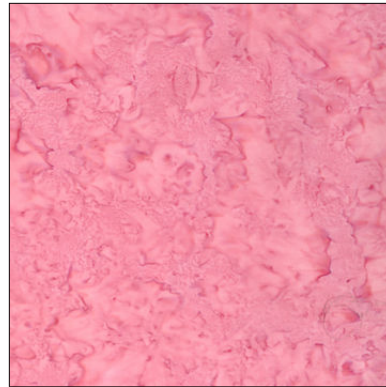
Dream Big Simple Path - Peony

Yardage Chart

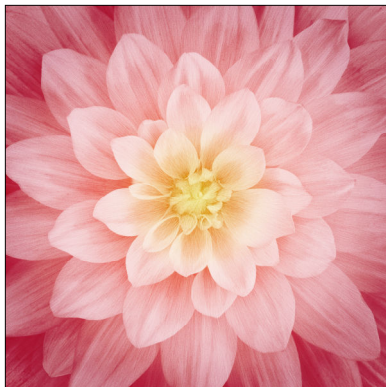
Fabric	1 Kit
Dream Big Wild Rose P4389 94	One Panel
Peony Digital Print P4371 333	1 1/4 yards
Blush for Background 1895 391	1 1/2 yards
Bubble Gum for Binding 1895 404	5/8 yard



Blush 1895 391



Bubble Gum 1895 404



Wild Rose 4389 94



Peony 4371 333

Dream Big Simple Path - Peony

Cutting:

Binding:

7 ea. 2 1/2" x Width Of Fabric (WoF) Strips

Background:

2 ea. WoF x 2 1/2" (Border 1A)

3 ea. WoF x 2 1/2" (Border 1B)

5 ea. WoF x 2 1/2" (Center Border)

Subcut 76 ea. 2 1/2" Snowball Squares (190") for Center Border. Mark one diagonal on each of these Snowball Squares.

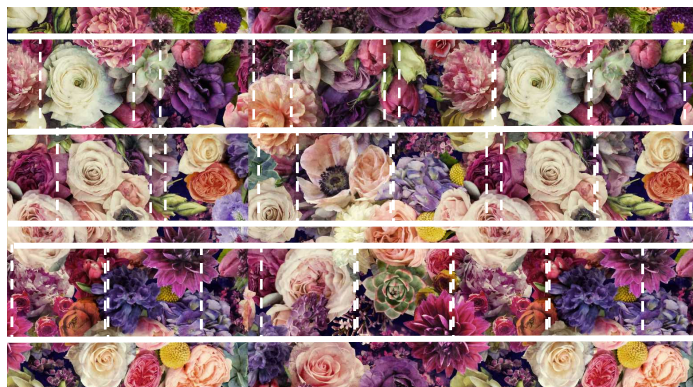
3 ea. WoF x 3 1/2" (Border 3A)

4 ea. WoF x 3 1/2" (Border 3 B)

Cutting the Center Panel: Mark the Top of the Center Panel. Trim Panel to 42 1/2" x 42 1/2". (That should require trimming off selvages and trimming 5/8" from top and bottom.)

From Peony:

For the Center Border pieces: This print is densely printed with digital flowers. Look at YOUR piece of the Peony fabric. Use the Strip Fussy Cutting method to cut. That is, cut strips to contain lots of flowers. You should have at least 45" of fabric but only NEED 37 1/2" so you have a bit of leeway. Plan your cuts. Most often, you will be able to cut and get 3-5 whole flowers. Not every square should have a flower centered, but it is nice to have many centered and other squares have recognizable bits to create a "Bouquet" effect. Cut 6 strips that are 6 1/4". Then cut 6 squares (6 1/4") from each strip. Note that when you cut your squares, you can again plan your cuts. The squares don't have to be cut in succession. You can trim a bit to better position the next flower as illustrated below:



Example of Strip Fussy Cutting

Plan the cutting of your strips to "capture" as many flowers as possible...
Then cut squares to highlight those flowers

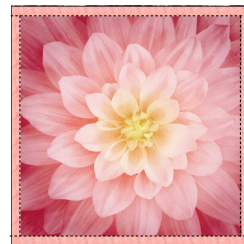
Strip Fussy Cutting Method:

1. Straighten the top edge near the top of some flowers. Plan your cuts to capture whole flowers but be sure you will get 6 of the 6 1/4" strips.
2. Cut a 6 1/4" strip, then cut 6 1/4" squares from the strip, not necessarily right next to each other, getting as many whole flowers as you can, but also some partial flowers to achieve a "Bouquet" effect in the finished border. Be sure to get 6 of 6 1/4" squares from each strip.
3. Continue to cut Strips, again not necessarily right next to each other to capture whole flowers, then cut 6 1/4" squares from each of the slices. From the 6 cut strips, you should have 36 patches each 6 1/4" square.

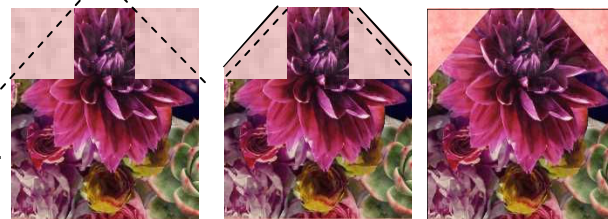
Dream Big Simple Path - Peony

Quilt Assembly:

1. Trim (if Necessary) 2 Border 1A strips (42 1/2") and add to sides of Center Panel. Assemble 2 Border 1B strips (46 1/2") and add to top and bottom of Center Panel. Quilt center should now measure 46 1/2" X 46 1/2".
2. Working with the patches cut from the Peony fabric, lay out the patches in a pleasing manner around the quilt center. Add snowballs to the outer edge of each patch. Note that the Corner Patches each get 3 snowballs. To add a Snowball, position the Snowball square on the patch as indicated by its grid piece following orientation shown in the diagram. Stitch along marked diagonal of the Snowball square. Trim away snowball excess 1/4" from stitched line. Fold "Snowball" out to complete the square.
3. Now assemble the snowballed patches into the Left and Right borders (8 Patches each.) Side Borders should each be 6 1/4" x 46 1/2". Add Left and Right Side Borders to the quilt center.
4. Assemble the remaining snowballed patches into the Top and Bottom borders (10 Patches each.) These Borders should each be 6 1/4" x 58". Add Top and Bottom Borders to the quilt center. Quilt should measure 58" x 58".
5. Assemble 2 Border 3A to be 58 1/2". Add these strips to sides of Center Panel. Assemble 2 Border 3B to be 64 1/2". Add these strips to top and bottom of Center Panel. Quilt should now measure 64" x 64".
6. Layer Quilt with Batting and Backing. Quilt as desired.
7. Bind with Binding Strips.



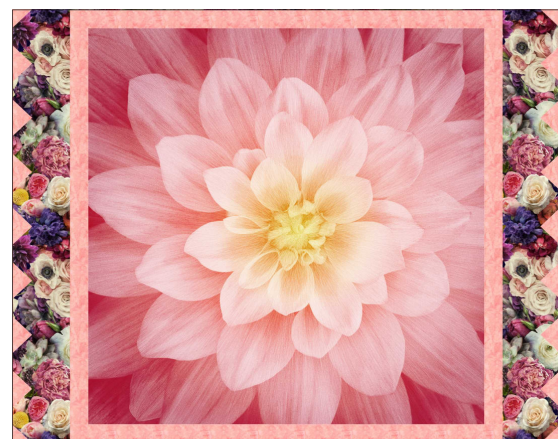
1. Add Inner Borders (1A and 1B strips) to Center Panel



2. Add 2 Snowballs as Middle Border Patches. Make 32.



Add 3 Snowballs to Corner Patches. Make 4 Corners.



Add Middle Pieced Border



Add Outer Border using 3A strips and 3B strips