

Pumpkin Patch

By Cheryl Haynes

FREE PATTERNS



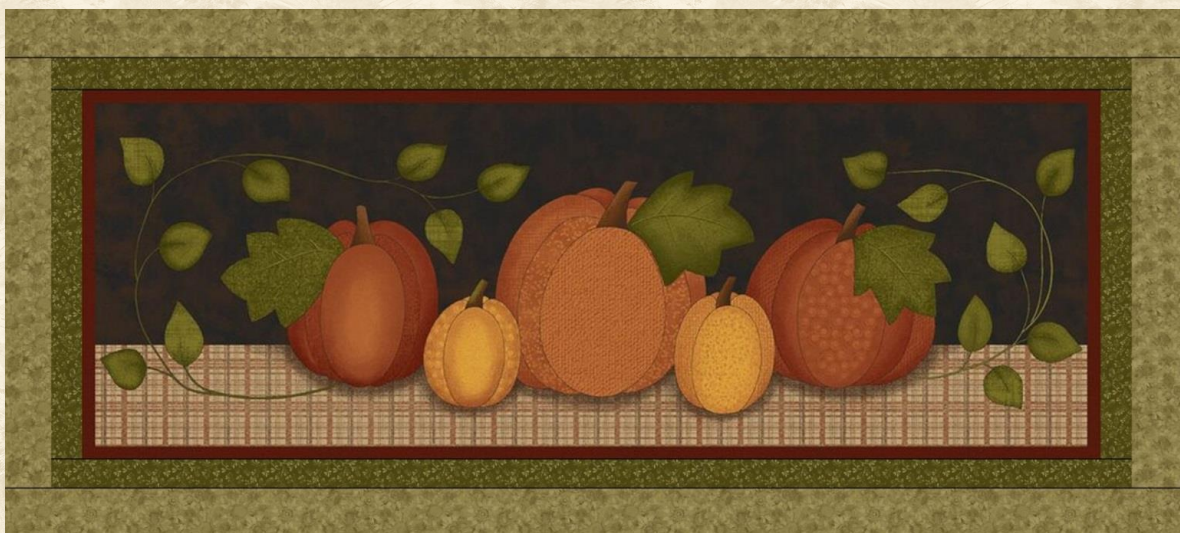
Pumpkin and Crow
Finished Size: 13" x 14"



Flowers In The Pumpkin
Wall Hanging - Orange
Finished Size: 17" x 20"



Flowers In The Pumpkin
Wall Hanging
Finished Size: 17" x 20"



The Pumpkin Patch Table Runner/Mat
Finished Size: 13" x 25"

Flowers in the Pumpkin 17" X 20" Wall Hanging



Materials needed:

One Pumpkin Patch panel
#2770-88

1/8 yard for sashing
#2549-12

1/3 yard for border/binding
#2773-40

1/2 yard for backing

Cutting:

Sashing black floral #2549-12

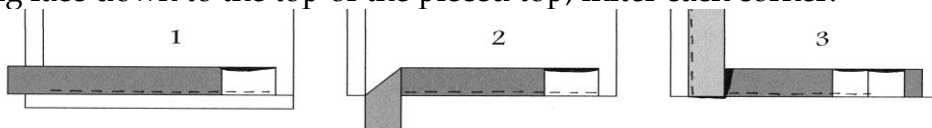
2 1-1/2" strips

Border/binding green #2773-40

2 2-1/2" strips

2 2-1/2" strips (binding)

1. Trim the panel picture outside the red edge with 1/4" extra all the way around.
2. Cut two 1-1/2" strips of black fabric for the sashing.
3. Sew one sashing strip to each side and trim the excess on the ends to match the panel.
4. Sew the remaining strip to the top and bottom and trim the excess.
5. Cut two 2-1/2" strips of green fabric for the border.
6. Sew one border strip to each side and trim the excess.
7. Sew the remaining border strip to the top and bottom and trim the excess.
8. Lay the quilt top on a layer of batting and backing fabric. Hand or machine the quilt.
9. Cut two 2-1/2" X WOF strips of border fabric and sew end to end, making a continuous strip of binding for the quilt.
10. Fold in half lengthwise, with right sides out, and press flat.
11. Pin around the edge of the pieced top with the raw edges to the outside edge of the quilt.
12. Sew the binding face down to the top of the pieced top, miter each corner.



13. Overlap the ends. Fold over to the back, pin, and hand-stitch on the back of the quilt.

Flowers in the Pumpkin 17" X 20" Wall Hanging



Materials needed:

One Pumpkin Patch panel
#2770-88

1/8 yard for sashing
#2776-87

1/3 yard for border/binding
#2774-28

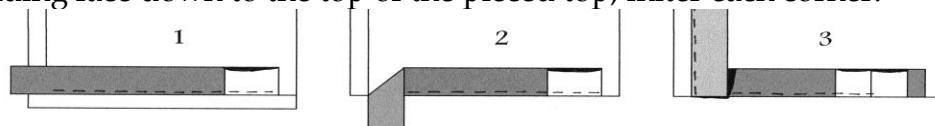
1/2 yard for backing

Cutting:

Sashing dark orange #2776-87
2 1-1/2" strips

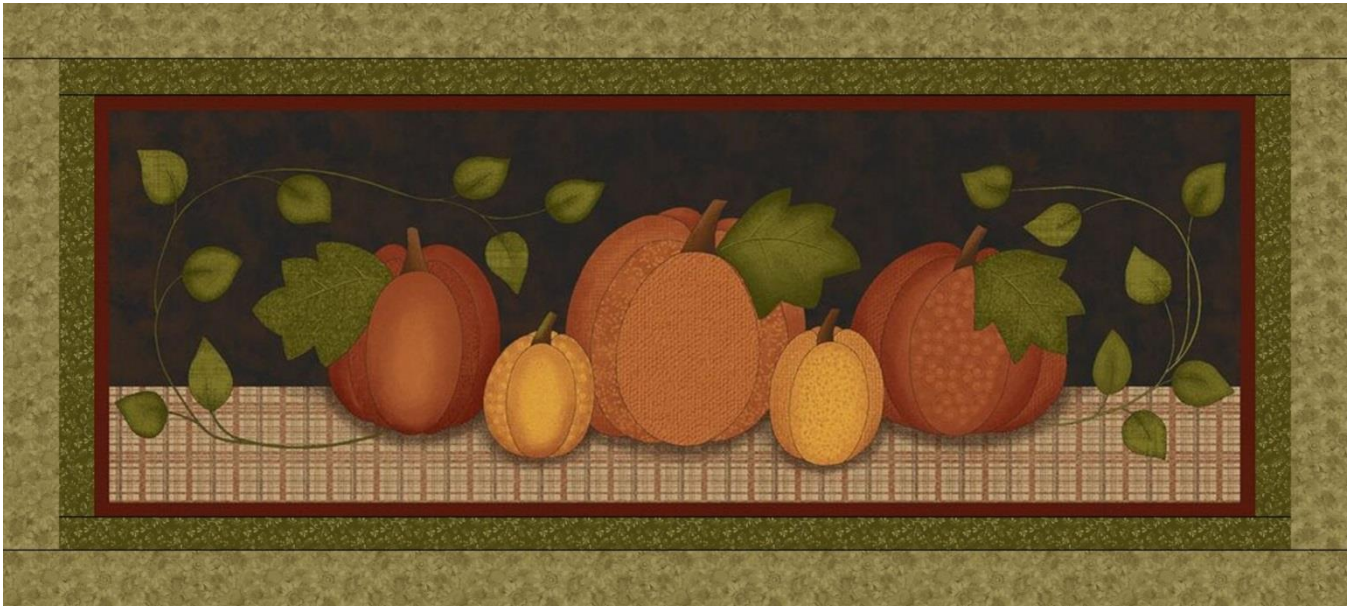
Border/binding orange #2774-28
2 2-1/2" strips
2 2-1/2" strips (binding)

1. Trim the panel picture outside the red edge with 1/4" extra all the way around.
2. Cut two 1-1/2" strips of dark orange fabric for the sashing.
3. Sew one sashing strip to each side and trim the excess on the ends to match the panel.
4. Sew the remaining strip to the top and bottom and trim the excess.
5. Cut two 2-1/2" strips of lighter orange fabric for the border.
6. Sew one border strip to each side and trim the excess.
7. Sew the remaining border strip to the top and bottom and trim the excess.
8. Lay the quilt top on a layer of batting and backing fabric. Hand or machine the quilt.
9. Cut two 2-1/2" X WOF strips of border fabric and sew end to end, making a continuous strip of binding for the quilt.
10. Fold in half lengthwise, with right sides out, and press flat.
11. Pin around the edge of the pieced top with the raw edges to the outside edge of the quilt.
12. Sew the binding face down to the top of the pieced top, miter each corner.



13. Overlap the ends. Fold over to the back, pin, and hand-stitch on the back of the quilt.

The Pumpkin Patch 13" X 25" Table Runner/ Mat



Materials needed:

One Pumpkin Patch fabric panel #2770-88

1/8 yard for sashing #2776-40

3/8 yard for border/ binding #2774-40

Cutting:

Sashing #2776-40

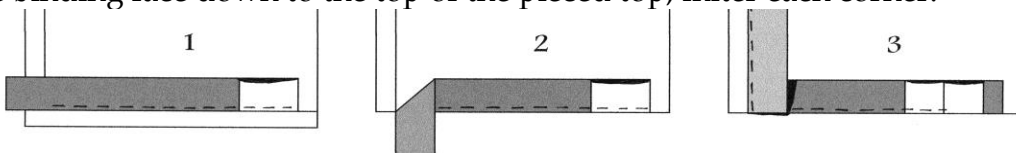
2 1-1/2" strips

Border #2774-40

2 2-1/2" strips

2 2-1/2" strips (used for binding)

1. Trim the panel picture outside the red border with $\frac{1}{4}$ " extra all the way around.
2. Cut two 1-1/2" strips of green fabric for the sashing.
3. Sew one strip down one side and the second strip down the other side.
4. Trim the excess on both ends to match the panel.
5. Using the remaining partial strips, sew to the top and bottom and trim the excess.
6. Cut two 2-1/2" strips of lighter green fabric for the border.
7. Sew one strip down one side and the second strip down the other side.
8. Sew the remainder of each strip across the top and bottom and trim the excess.
9. Lay the runner on a layer of batting and backing fabric. Hand or machine the quilt.
10. Cut two 2-1/2" X WOF strips of border fabric and sew end to end, making a continuous strip of binding for the quilt.
11. Fold in half lengthwise, with right sides out, and press flat.
12. Pin around the edge of the pieced top with the raw edges to the outside edge of the quilt.
13. Sew the binding face down to the top of the pieced top, miter each corner.



14. Overlap the ends.
15. Fold over to the back, pin, and hand-stitch on the back of the quilt.

www.prairiegrovepeddler.com

Pumpkin and Crow 13" X 14" Pillow



Materials needed:

One Pumpkin Patch panel #2770-88

1-1/2" strip of orange for sashing #2776-87

3/8 yard for pumpkin border/backing #2771-12

****Before cutting the fabric strips, set aside a piece of border fabric 13-1/2" X 16" for the backing**

1. Trim the panel picture outside the red edge with 1/4" extra all the way around.
2. Cut one 1-1/2" strip of orange fabric for the sashing.
3. Sew the strip to each side and trim the excess each time.
4. Sew the remainder to the top and bottom and trim the excess on the ends.
5. Cut three 2-1/2" strips of orange fabric for the outer border from the remainder of the backing.
6. Sew one strip to one side and trim the excess.
7. Sew the remainder of the same strip to the other side.
8. Sew the remaining two strips the top and bottom border and trim the excess.
9. Lay the pieced top with right sides together on the backing fabric.
10. Lay both pieces on top of two layers of quilt batting.
11. Sew all the way around, leaving about 6" open for turning, starting and stopping on the bottom. Trim the seam and turn the pillow top right side out.
12. Push the corners out and smooth the seams. Stuff with Poly-fil between the two layers of batting. Hand-stitch the opening closed.