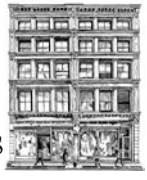


**TIMELESS
TREASURES**

BROOME STREET PATTERNS



Row by Row On the Go

by Debra Gabel

Travelogue

Designed by Osie Lebowitz



Finished quilt size: 73½" x 79½"

Fabric Requirements

One fat quarter Row-C5061 Multi
1/3 yard Row-C5058 Multi
1/3 yard Row-C5062 Stamp
3/4 yard Hatch-C2959 Citrus
1/2 yard Hatch-C2959 Tomato
1 1/2 yards Row-C5059 Tan
5/8 yard Fun-C8224 Ocean (binding)
5 yards Row by Row On the Go backing fabric
of your choice

Other supplies:

8 rows of your choice from the Row by Row Experience
2017 (36 1/2" x 9 1/2" unfinished; two must be vertical or
non-directional)
81" x 88" batting

Cutting

From Row-C5061 Multi:

- Fussy-cut two 4 1/2" x 9 1/2" strips following the quilt photo for motif placement.

From Row-C5058 Multi:

- Fussy-cut one 9 1/2" x 20 1/2" strip following the quilt photo for motif placement.

From Row-C5062 Stamp:

- Cut one 9 1/2" x 20 1/2" strip.

From Hatch-C2959 Citrus:

- Cut nine 2 1/2" x width of fabric (WOF) strips. Sub-cut three 2 1/2" x 36 1/2" strips and two 2 1/2" x 42 1/2" strips. Sub-cut one strip into two 2 1/2" x 20 1/2" strips. Sub-cut one strip into two 2 1/2" x 9 1/2" strips. Set the remaining strips aside for quilt construction.

From Hatch-C2959 Tomato:

- Cut seven 2" x WOF for the inner border.

From Row-C5059 Tan:

- Cut eight 6 1/2" x WOF for the outer border.

From Fun-C8224 Ocean:

- Cut eight 2 1/2" x WOF for binding.

Quilt Top Assembly

All seam allowances are 1/4" and pieces are sewn right sides together.

1. Lay out six horizontal rows and two vertical rows in a pleasing arrangement. For construction reference, horizontal rows start at top, numbers 1 to 6. Vertical rows are numbered left to right, 7 and 8.
2. Sew a 2 1/2" x 36 1/2" C2959 Citrus sashing strip to the bottom of row 1. Sew row 2 to the bottom of row 1.
3. Repeat step 2 for rows 3 and 4; and 5 and 6.
4. Sew a 2 1/2" x 20 1/2" C2959 Citrus sashing strip to the right side of row 1/2 section. Sew a 9 1/2" x 20 1/2" C5062 Stamp strip to the right of that sashing strip. This section will measure 20 1/2" x 47 1/2".
5. Sew a 2 1/2" x 20 1/2" C2959 Citrus sashing strip to the left side of row 5/6 section. Sew a 9 1/2" x 20 1/2" C5058 Multi strip to the left of the sashing strip. This section will measure 20 1/2" x 47 1/2".
6. Sew a 2 1/2" x 9 1/2" C2959 Citrus sashing strip to the top of vertical row 7. Sew a 4 1/2" x 9 1/2" C5061 Multi strip to the top of the sashing strip. Sew a 2 1/2" x 42 1/2" C2959 Citrus sashing strip to the right of the row 7 section. This section will measure 11 1/2" x 42 1/2".
7. Sew a 2 1/2" x 9 1/2" C2959 Citrus sashing strip to the bottom of vertical row 8. Sew a 4 1/2" x 9 1/2" C5061 Multi strip to the bottom of the sashing strip. Sew a 2 1/2" x 42 1/2" C2959 Citrus sashing strip to the left of the row 8 section. This section will measure 11 1/2" x 42 1/2".
8. Sew the remaining 2 1/2" C2959 Citrus strips together end to end using diagonal seams. Cut two 2 1/2" x 47 1/2" strips. Sew one strip to the bottom of row 1/2 Section. Sew the other strip on the top of the row 5/6 section.
9. The final assembly requires sewing a partial seam. Line up the row 3/4 section on top of the row 5/6 section, aligning the left edges. Starting on the left, sew the rows together stopping halfway along row 4.



10. Sew the row 7 section to the left of rows 3/4 and 5/6.
11. Sew the row 1/2 section to the top of row 7/3.
12. Sew row 8 to the right of rows 1/2 and 3/4 sections.
13. Complete the sewing on the partially sewn row between row 4 and 5 to the lower end of row 8.
14. Sew the seven 2" x WOF C2959 Tomato strips together end to end using diagonal seams. Measure the quilt center length and cut two strips that measurement. Sew one strip to each side of the quilt.
15. Measure the quilt center width and cut two strips that measurement from the pieced C2959 Tomato strip. Sew one strip to the top and the other to the bottom of the quilt.
16. Repeat steps 14 and 15 using eight 6¹/₂" x WOF C5059 Tan strips for the outer border, noting the print direction.

Finishing

17. Layer the quilt top, batting and backing and quilt as desired.
18. Stitch the binding strips together end to end using diagonal seams. Fold and press the resulting long strip in half lengthwise with wrong sides together. Stitch to the quilt front, matching raw edges and mitering the corners.
19. Fold the binding to the quilt underside and hand-stitch the folded edge to the quilt back.

Featured 2016 Row Patterns

- Row 1 - Northwest Sewing Center - Austin, Texas
- Row 2 - A Sewing Basket - Salado, Texas
- Row 3 - Over the Top Quilting Studio - Cedar Park, Texas
- Row 4 - The Fig Leaf - Fort Collins, Colorado
- Row 5 - Snowy River Quilts - Laramie, Wyoming
- Row 6 - Prints Charming Quilt Shop - Fulton, Maryland
- Row 7 (vertical) - Discover Quilting - Salem, Oregon
- Row 8 (vertical) - Heirloom Elegance - Corpus Christi, Texas

Osie Lebowitz

©2017 Timeless Treasures www.ttfabrics.com
 This pattern is for individual home use only. This pattern may not be reproduced for commercial purposes (i.e., may not be sold).