

Birds 'n Bees

By Shelly Comiskey

Simply Shelly
design and illustration



Quilt 1

A Free Project Sheet From

 Henry Glass & Co., Inc.



facebook

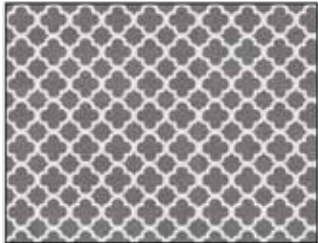
Finished Quilt Size: 52" x 64"
49 West 37th Street, New York, NY 10018
tel: 212-686-5194 fax: 212-532-3525
Toll Free: 800-294-9495
www.henryglassfabrics.com

BIRDS 'N BEES

Quilt 1

Finished Quilt Size: 52" x 64"

Fabrics in the Collection



Geometric - Gray
6497-90



Geometric - Yellow
6497-44



Geometric - Blue
6497-11



Floral - Black
6496-99



Floral - Yellow
6496-44



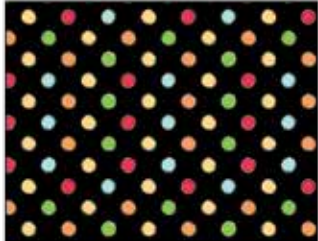
Floral - Blue
6496-11



Birds/Bees - Yellow
6495-44



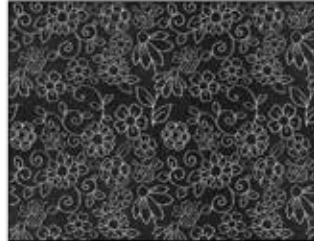
Birds/Bees - Blue
6495-11



Dot - Black
6494-99



Dot - White/Multi
6494-86



Monotone Floral - Black
6493-99



Monotone Floral - Green
6493-66



Novelty Stripe - Multi
6492-99



Monotone Floral - Blue
6493-11



Birdhouse/Beehives - Green
6491-66



Panel - Multi
6490P-99



Birdhouse/Beehives - Yellow
6491-44

Select Fabrics
from Folio



Folio - White on White
7755-01

Materials

1 panel	Panel - Multi (A)	6490P-99
$\frac{5}{8}$ yard	Geometric - Yellow (B)	6497-44
$\frac{1}{2}$ yard	Floral - Blue (C)	6496-11
$\frac{7}{8}$ yard	Monotone Floral - Green (D)	6493-66
1 yard	Dot - Black (E)	6494-99*
$\frac{1}{4}$ yard	Birds/Bees - Blue (F)	6495-11
$\frac{1}{2}$ yard	Birdhouse/Beehives - Yellow (G)	6491-44
$\frac{1}{4}$ yard	Monotone Floral - Blue (H)	6493-11
$\frac{3}{8}$ yard	Monotone Floral - Black (I)	6493-99
2 yards	Novelty Stripe - Multi (J)	6492-99
3 $\frac{1}{2}$ yards	Floral - Yellow (Backing)	6496-44

*Includes binding

Quilt Cutting Instructions

Please note: all strips are cut across the width of fabric (WOF) from selvage to selvage unless otherwise noted.

From the Panel - Multi (A):

- Fussy cut (1) 22 $\frac{1}{2}$ " x 36 $\frac{1}{2}$ " strip.

From the Geometric - Yellow (B), cut:

- (2) 2" x 36 $\frac{1}{2}$ " strips from the WOF.
- (6) 2" x WOF strips. Sub-cut strips into (112) 2" squares.

From the Floral - Blue (C), cut:

- (2) 6 $\frac{1}{2}$ " x WOF strips. Sub-cut strips into (18) 2 $\frac{1}{2}$ " x 6 $\frac{1}{2}$ " strips and (4) 2 $\frac{1}{2}$ " x 5 $\frac{1}{2}$ " strips.

From the Monotone Floral - Green (D), cut:

- (5) 2" x WOF strips. Sub-cut strips into (92) 2" squares.
- (3) 2 $\frac{1}{2}$ " x WOF strips. Sew the strips together end to end, with diagonal seams, and cut (2) 2 $\frac{1}{2}$ " x 54 $\frac{1}{2}$ " strips.
- (3) 2 $\frac{1}{2}$ " x WOF strips. Sew the strips together end to end, with diagonal seams, and cut (2) 2 $\frac{1}{2}$ " x 46 $\frac{1}{2}$ " strips.

From the Dot - Black (E), cut:

- (2) 3 $\frac{1}{2}$ " x WOF strips. Sub-cut strips into (14) 3 $\frac{1}{2}$ " squares.
- (2) 1 $\frac{1}{2}$ " x 40 $\frac{1}{2}$ " WOF strips.
- (2) 1 $\frac{1}{2}$ " x 30 $\frac{1}{2}$ " WOF strips.
- (6) 2 $\frac{1}{2}$ " x WOF strips for the binding.

From the Birds/Bees - Blue (F), cut:

- (1) 6 $\frac{1}{2}$ " x WOF strip. Sub-cut strip into (6) 6 $\frac{1}{2}$ " squares.

From the Birdhouse/Beehives - Yellow (G), cut:

- (2) 6 $\frac{1}{2}$ " x WOF strips. Sub-cut strips into (8) 6 $\frac{1}{2}$ " squares.

From the Monotone Floral - Blue (H), cut:

- (3) 2" x WOF strips. Sub-cut strips into (56) 2" squares.

From the Monotone Floral - Black (I), cut:

- (3) 3 $\frac{1}{2}$ " x WOF strips. Sub-cut strips into (56) 2" x 3 $\frac{1}{2}$ " strips.

From the Novelty Stripe - Multi (J), cut:

- (2) 3 $\frac{1}{2}$ " x 68" strips from the length of fabric (LOF).
- (2) 3 $\frac{1}{2}$ " x 56" LOF strips.

From the Floral - Yellow (Backing), cut:

- (2) 60" x WOF strips for the backing. Sew the strips together and trim to make the 60" x 72" back.

Sewing Instructions

1. Sew (1) 2" x 36 $\frac{1}{2}$ " Fabric B strip to each side of the 22 $\frac{1}{2}$ " x 36 $\frac{1}{2}$ " Fabric A strip. Trim the block to measure 24 $\frac{1}{2}$ " x 36 $\frac{1}{2}$ " to make the Center Block (Fig. 1).

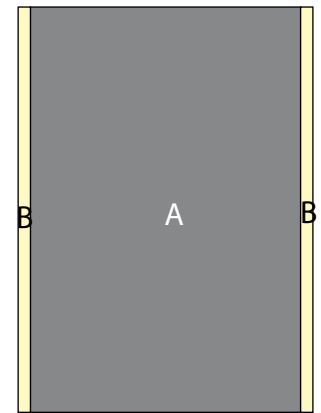


Fig. 1

2. Place (1) 2" Fabric B square on the left side of (1) 2" x 3 $\frac{1}{2}$ " Fabric I strip, right sides together (Fig. 2). Sew across the diagonal of the square from the upper right corner to the lower left corner (Fig. 2). Flip open the triangle formed and press (Fig. 3). Trim away the excess fabric from behind the triangle, leaving a $\frac{1}{4}$ " seam allowance.



Fig. 2



Fig. 3

3. Place another 2" Fabric B square on the right side of the 2" x 3 $\frac{1}{2}$ " Fabric I strip, right sides together (Fig. 4). Sew across the diagonal of the square from the upper left corner to the lower right corner (Fig. 4). Flip open the triangle formed and press (Fig. 5). Trim away the excess fabric from behind the triangle, leaving a $\frac{1}{4}$ " seam allowance to make (1) BIB unit.

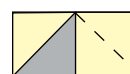


Fig. 4

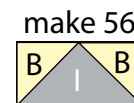


Fig. 5

4. Repeat Steps 2-3 to make (56) BIB units total.

5. Place (1) 2" Fabric D square on the top left corner of (1) 3 1/2" Fabric E square, right sides together (Fig. 6). Sew across the diagonal of the smaller square from the upper right corner to the lower left corner (Fig. 6). Flip open the triangle formed and press (Fig. 7). Trim away the excess fabric from behind the triangle 1/4" away from the sewn seam.

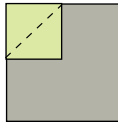


Fig. 6

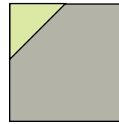


Fig. 7

6. Follow Figure 8 for the seam direction to add a 2" Fabric D square to each of the remaining corners of the 3 1/2" Fabric E square to make (1) E-block (Fig. 9).

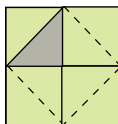


Fig. 8



Fig. 9

7. Repeat Steps 5-6 to make (14) E-blocks total.

8. Sew (1) BIB unit to each side of (1) E-block. Sew (1) 2" Fabric H square to each end of (1) BIB unit. Repeat to make a second strip. Sew the strips to the top and to the bottom of the E-block to make (1) Border Block (Fig. 10). Repeat to make (14) Border Blocks total.

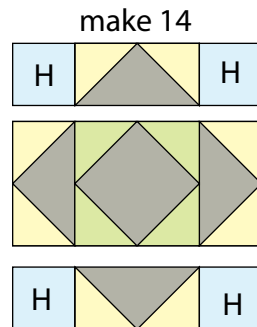


Fig. 10

9. Place (1) 2" Fabric D square on the lower left side of (1) 2 1/2" x 6 1/2" Fabric C strip, right sides together (Fig. 11). Sew across the diagonal of the square from the upper left corner to the lower right corner (Fig. 11). Flip open the triangle formed and press (Fig. 12). Trim away the excess fabric from behind the triangle, leaving a 1/4" seam allowance.



Fig. 11

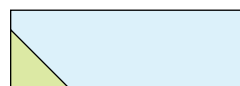


Fig. 12

10. Place another 2" Fabric D square on the lower right side of the 2 1/2" x 6 1/2" Fabric C strip, right sides together (Fig. 13). Sew across the diagonal of the square from the upper right corner to the lower left corner (Fig. 13). Flip

open the triangle formed and press (Fig. 14). Trim away the excess fabric from behind the triangle, leaving a 1/4" seam allowance to make (1) DCD unit.

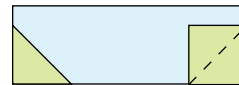


Fig. 13

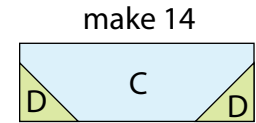


Fig. 14

11. Repeat Steps 9-10 to make (14) DCD units total.

12. Place (1) 2" Fabric D square on the lower right side of (1) 2 1/2" x 5 1/2" Fabric C strip, right sides together. Sew across the diagonal of the square from the upper right corner to the lower left corner. Flip open the triangle formed and press. Trim away the excess fabric from behind the triangle, leaving a 1/4" seam allowance to make (1) short CD unit (Fig. 15). Repeat to make a second short CD unit.

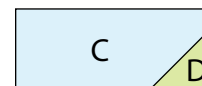


Fig. 15



Fig. 16

13. Place (1) 2" Fabric D square on the lower left side of (1) 2 1/2" x 5 1/2" Fabric C strip, right sides together. Sew across the diagonal of the square from the upper left corner to the lower right corner. Flip open the triangle formed and press. Trim away the excess fabric from behind the triangle, leaving a 1/4" seam allowance to make (1) short DC unit (Fig. 16). Repeat to make a second short DC unit.

14. Place (1) 2" Fabric D square on the lower right side of (1) 2 1/2" x 6 1/2" Fabric C strip, right sides together. Sew across the diagonal of the square from the upper right corner to the lower left corner. Flip open the triangle formed and press. Trim away the excess fabric from behind the triangle, leaving a 1/4" seam allowance to make (1) long CD unit (Fig. 17). Repeat to make a second long CD unit.

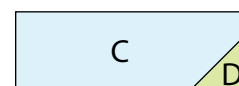


Fig. 17

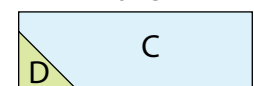


Fig. 18

15. Place (1) 2" Fabric D square on the lower left side of (1) 2 1/2" x 6 1/2" Fabric C strip, right sides together. Sew across the diagonal of the square from the upper left corner to the lower right corner. Flip open the triangle formed and press. Trim away the excess fabric from behind the triangle, leaving a 1/4" seam allowance to make (1) long DC unit (Fig. 18). Repeat to make a second long DC unit.

16. Sew (3) DCD units together end to end. Sew (1) short CD unit to the left end and (1) short DC unit to the right end of the DCD strip to make (1) top/bottom strip (Fig. 19). Repeat to make a second top/bottom strip.

17. Sew (4) DCD units together end to end. Sew (1) long CD unit to the left end and (1) long DC unit to the right end of the DCD strip to make (1) side strip (Fig. 20). Repeat to make a second side strip.

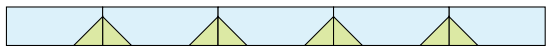


Fig. 19

make 2

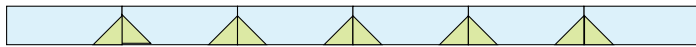


Fig. 20

make 2

Quilt Top Assembly

(Refer to the Quilt Layout while assembling.)

18. Sew (1) side strip to each side of the Center Block. Sew (1) top/bottom strip to the top and to the bottom of the Center Block.

19. Sew (1) 1 1/2" x 40 1/2" Fabric E strip to each side of the Center Block. Sew (1) 1 1/2" x 30 1/2" Fabric E strip to the top and to the bottom of the Center Block.

20. Sew (4) Border Blocks, (2) 6 1/2" Fabric G squares and (1) 6 1/2" Fabric F square together to make (1) strip. Repeat to make a second strip. Sew (1) strip to each side of the Center Block.

21. Sew (2) 6 1/2" Fabric F squares, (3) Border Blocks and (2) 6 1/2" Fabric G squares together to make (1) strip. Repeat to make a second strip. Sew the strips to the top and to the bottom of the Center block to make the quilt top.

22. Sew (1) 2 1/2" x 54 1/2" Fabric D strip to each side of the quilt top. Sew (1) 2 1/2" x 46 1/2" Fabric D strip to the top and to the bottom of the quilt top.

23. Center (1) 3 1/2" x 68" Fabric J strip on one side of the quilt top and pin in place. Start sewing the strip a 1/4" from the top edge of the quilt top and stop a 1/4" from the bottom edge. **DO NOT TRIM THE EXCESS.** Repeat with the opposite side.

24. Repeat Step 23 to sew (1) 3 1/2" x 56" strip to the top and to the bottom of the quilt top, making sure to stop and start 1/4" away from each end of the quilt top. To miter each corner, fold the quilt top on a diagonal, wrong side together. This should line up the strips from adjacent sides (Fig. 21).

25. Starting at the sewn seam (represented by the arrow in Figure 21), draw a 45-degree line to the edge of the fabric. Sew on the drawn line. Trim the excess fabric leaving a 1/4" seam. Repeat this step with the remaining corners.

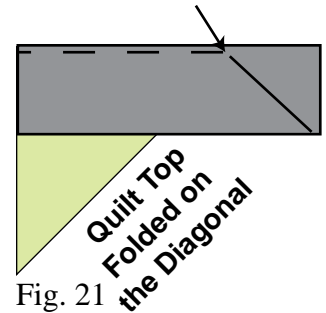


Fig. 21

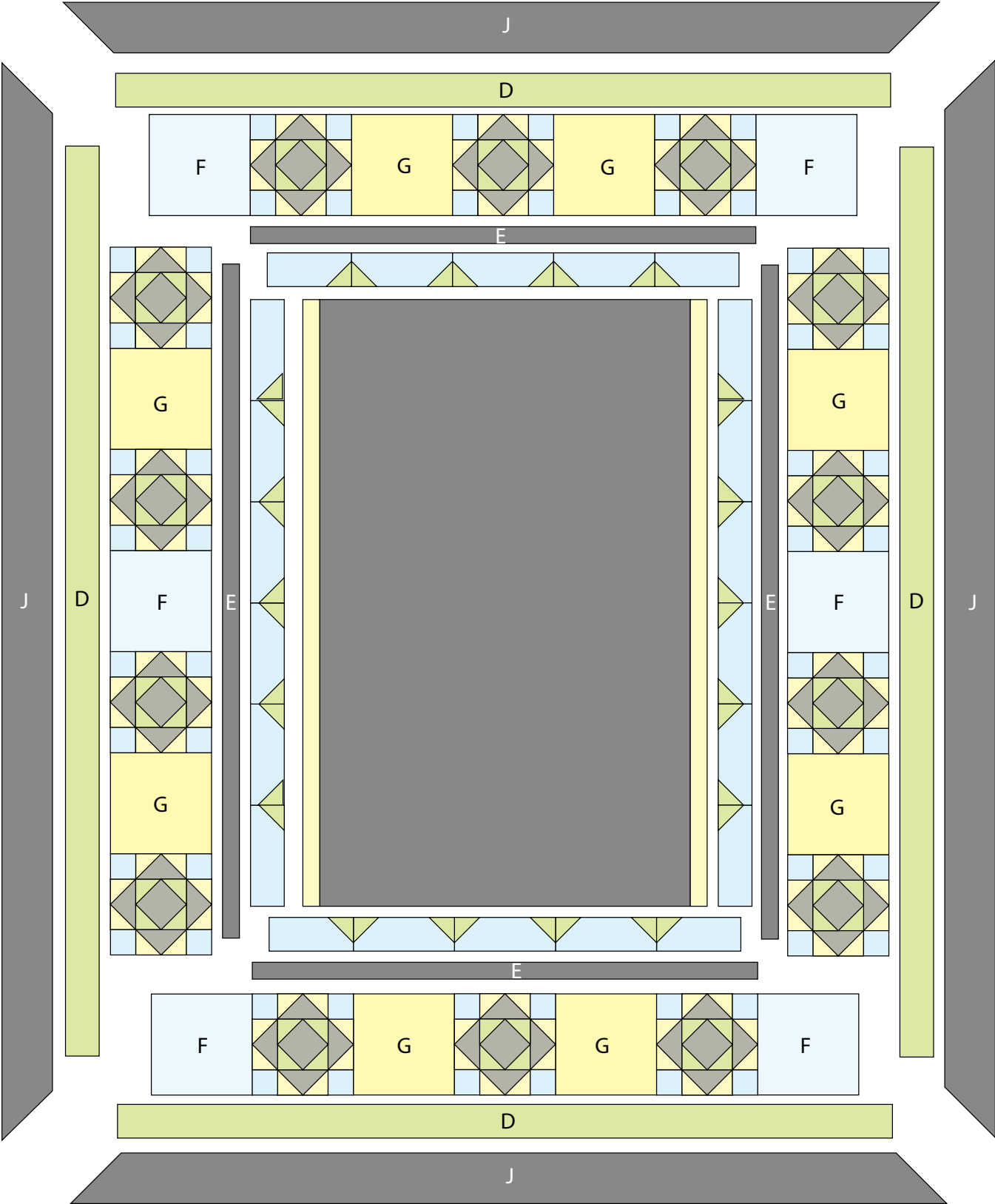
26. Layer and quilt as desired.

27. Sew the (6) 2 1/2" x WOF Fabric E strips together, end to end with 45-degree seams, to make the binding. Fold this long strip in half lengthwise with wrong sides together and press.

28. Bind as desired.

BIRDS 'N BEES

Quilt 1



Quilt Layout