

Peaceful Garden

By Mary Jane Carey



Quilt 2



Quilt Design by Mary Jane Carey

Skill Level: Beginner

A Free Project Sheet From



Finished Quilt Size: 34 1/4" x 43"
49 West 37th Street, New York, NY 10018
tel: 212-686-5194 fax: 212-532-3525
Toll Free: 800-294-9495
www.henryglassfabrics.com

PEACEFUL GARDEN

Finished Quilt Size: 34 1/4" x 43"

Quilt 2

Fabrics in the Collection



Master Floral - Blush
8690-22



Master Floral - Cream
8690-44



Master Floral - Green
8690-66



Astilbe - Blush
8692-22



Astilbe - Cream
8692-44



Astilbe - Green
8692-66



Paisley - Blush
8693-22



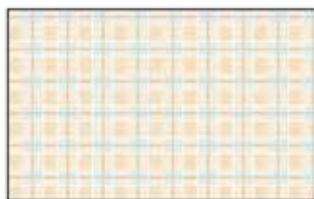
Paisley - Cream
8693-44



Paisley - Green
8693-66



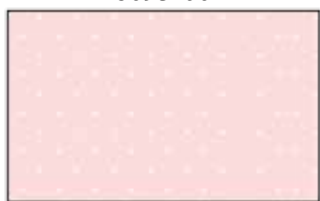
Plaid - Blush
8694-22



Plaid - Cream
8694-44



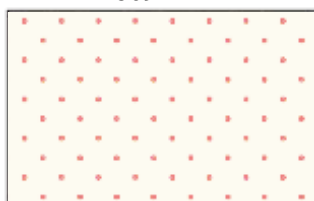
Plaid - Green
8694-66



Dot - Blush
8695-22



Dot - Cream/Blue
8695-41



Dot - Cream/Pink
8695-42



Small Floral - Blush
8696-22



Small Floral - Cream
8696-44



Small Floral - Green
8696-66



Packed Floral - Pink
8698-22



Packed Floral - Cream
8698-44



Border Stripe - Cream
8697-44

Materials

¼ yard	Small Floral - Blush (A)	8696-22
¼ yard	Dot - Cream/Pink (B)	8695-42
¼ yard	Paisley - Blush (C)	8693-22
¼ yard	Small Floral - Green (D)	8696-66
¼ yard	Dot - Blush (E)	8695-22
¼ yard	Small Floral - Cream (F)	8696-44
¼ yard	Paisley - Green (G)	8693-66
¼ yard	Plaid - Blush (H)	8694-22
½ yard	Astilbe - Green (I)	8692-66*
1 ⅛ yards	Border Stripe - Cream (J)	8697-44
½ yard	Master Floral - Blush (K)	8690-22
1 ½ yards	Master Floral - Blush (Backing)	8690-22

*Includes binding

Quilt Cutting Instructions

Please note: all strips are cut across the width of fabric (WOF) from selvage to selvage edge unless otherwise noted.

From the Small Floral - Blush (A), cut:

- (2) 2" x WOF strips. Sub-cut strips into (12) 2" x 4 ½" strips.

From the Dot - Cream/Pink (B), cut:

- (2) 2" x WOF strips. Sub-cut strips into (12) 2" x 4 ½" strips.

From the Paisley - Blush (C), cut:

- (2) 2" x WOF strips. Sub-cut strips into (12) 2" x 4 ½" strips.

From the Small Floral - Green (D), cut:

- (2) 2" x WOF strips. Sub-cut strips into (12) 2" x 4 ½" strips.

From the Dot - Blush (E), cut:

- (2) 2" x WOF strips. Sub-cut strips into (12) 2" x 4 ½" strips.

From the Small Floral - Cream (F), cut:

- (2) 2" x WOF strips. Sub-cut strips into (12) 2" x 4 ½" strips.

From the Paisley - Green (G), cut:

- (2) 2" x WOF strips. Sub-cut strips into (12) 2" x 4 ½" strips.

From the Plaid - Blush (H), cut:

- (2) 2" x WOF strips. Sub-cut strips into (12) 2" x 4 ½" strips.

From the Astilbe - Green (I), cut:

- (2) 1" x 36 ½" WOF strips.
- (2) 1" x 28 ¾" WOF strips.
- (4) 2 ½" x WOF strips for the binding.

From the Border Stripe - Cream (J), fussy cut:

- (5) 2 ¾" x 36 ½" WOF strips, each centered on a floral strip.

From the Master Floral - Blush (K), cut:

- (2) 3 ½" x 37 ½" WOF strips.
- (2) 3 ½" x 34 ¾" WOF strips.

From the Master Floral - Blush (Backing), cut:

- (1) 51" x 42" strip for the back.

Sewing Instructions

1. Follow Figure 1 and sew (8) assorted 2" x 4 ½" strips together lengthwise to make (1) Block. Repeat to make (12) Blocks total.
2. Sew (3) Blocks together end to end to make (1) Column (Fig. 2). Repeat to make (4) Columns total.

Quilt Top Assembly

(Refer to the *Quilt Layout while assembling.*)

3. Sew (5) 2 ¾" x 36 ½" Fabric J strips and (4) Columns together lengthwise and alternating them, to make the quilt top.
4. Sew (1) 1" x 36 ½" Fabric I strip to each side of the quilt top. Sew (1) 1" x 28 ¾" Fabric I strip to the top and to the bottom of the quilt top.
5. Sew (1) 3 ½" x 37 ½" Fabric K strip to each side of the quilt top. Sew (1) 3 ½" x 34 ¾" Fabric K strip to the top and to the bottom of the quilt top.
6. Layer and quilt as desired.
7. Sew the (4) 2 ½" x WOF Fabric I strips together, end to end with 45-degree seams, to make the binding. Fold this long strip in half lengthwise with wrong sides together and press.
8. Bind as desired.

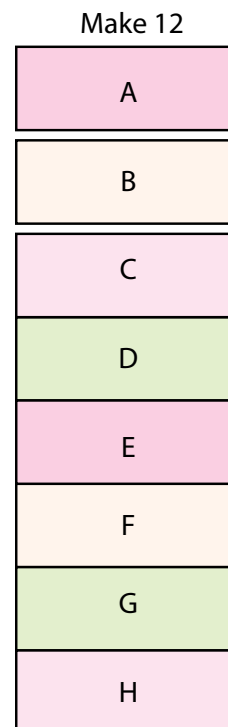


Fig. 1

make 4
Columns

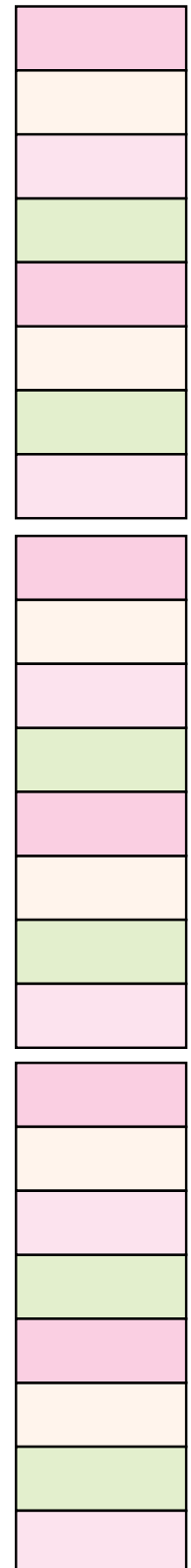
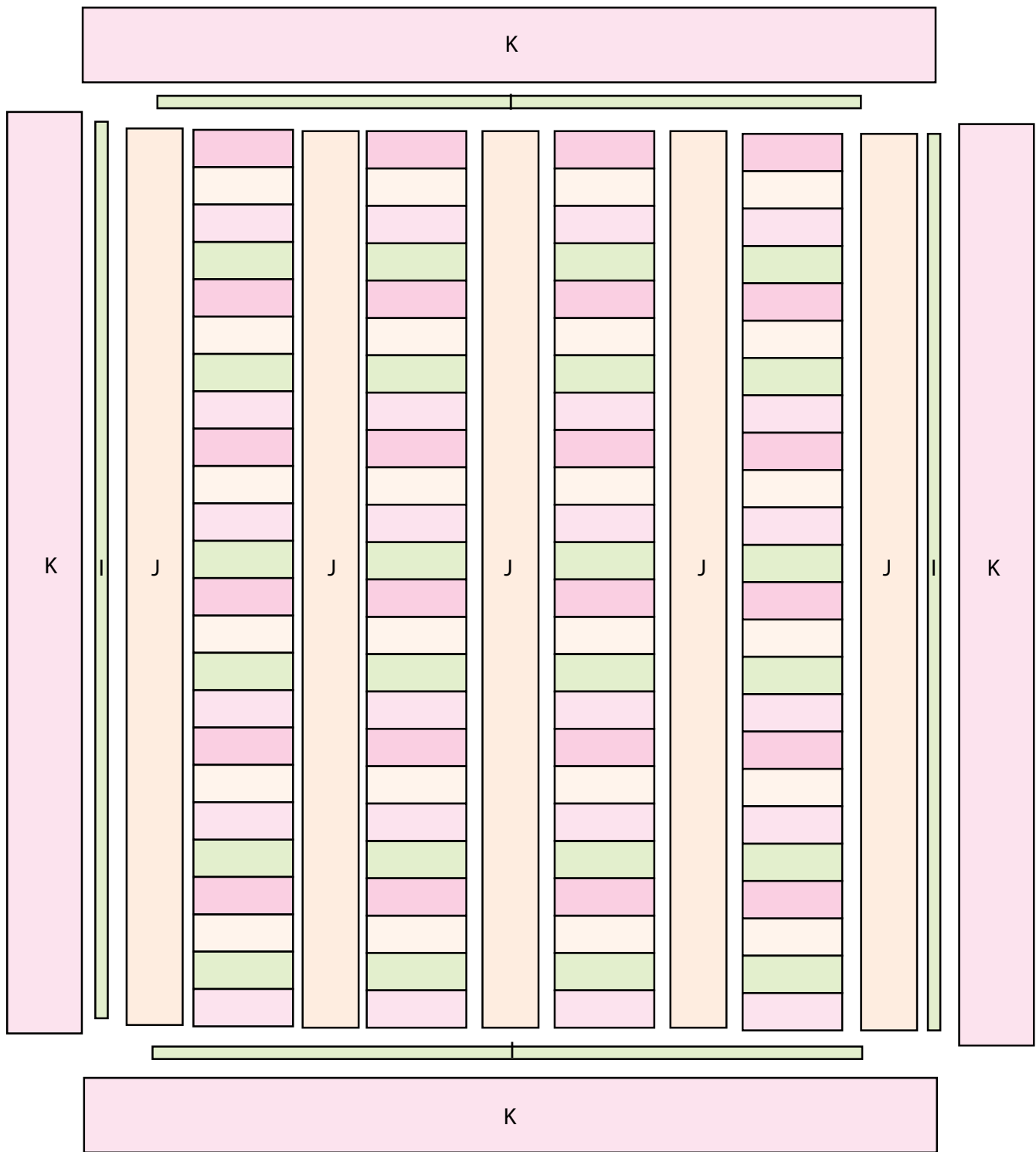


Fig. 2

PEACEFUL GARDEN

Quilt 2



Quilt Layout

Every effort has been made to ensure that all projects are error free. All the information is presented in good faith, however no warranty can be given nor results guaranteed as we have no control over the execution of instructions. Therefore, we assume no responsibility for the use of this information or damages that may occur as a result. When errors are brought to our attention, we make every effort to correct and post a revision as soon as possible. Please make sure to check www.henryglassfabrics.com for pattern updates prior to starting the project. We also recommend that you test the project prior to cutting for kits. Finally, all free projects are intended to remain free to you and are **not for resale**.