

Katie's Cupboard

Fat Quarter Lap Quilt

by *Kim Diehl*



Finished Quilt Size: 60½" x 64½"
A Free Project Sheet from

49 West 37th Street, New York, NY 10018
tel: 212-686-5194 • fax: 212-532-3525
Toll-free: 800-294-9495
www.henryglassfabrics.com

 Henry Glass & Co., Inc.



[facebook](#)

Katie's Cupboard Fat Quarter Lap Quilt

Finished quilt size: 60½" x 64½"

MATERIALS

Yardages are based on a 42" width of useable fabric after prewashing and removing selvages.

1 fat quarter (18" x 21") each of 4 assorted neutral prints for inner border patchwork (6674-40; 6675-40; 6676-40; 6678-40)

1 fat quarter each of 24 assorted prints for patchwork for quilt center, inner border, outer border, and binding (6670-33, 88, 99; 6671-66, 88, 99; 6672-44, 66, 88; 6673-30, 66, 88; 6674-11, 22, 44; 6675-11, 33; 6676-44, 77; 6677-33, 66, 88; 6678-33, 77)

4 yards of print of choice for backing (Kim suggests 6674-40)

CUTTING

Please cut all pieces across the width of the fabric in the order given unless otherwise noted.

From the 24 assorted prints, cut a combined total of:

124 squares, 4⅞" x 4⅞"; cut each square in half diagonally *once* to yield two triangles (combined total of 248)

256 rectangles, 1½" x 4½"

100 squares, 2½" x 2½"

Enough 2½"-wide rectangles in random lengths to make a 252" length of binding when joined together end to end.

From each of the four assorted neutral prints, cut:

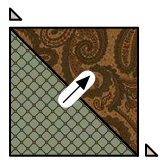
25 squares, 2½" x 2½" (combined total of 100)



PIECING THE PATCHWORK UNITS

Sew all pieces with right sides together using a ¼" seam allowance unless otherwise noted.

- 1 Select two assorted print 4⅞" triangles, choosing the prints randomly. Join the triangles along the long diagonal edges. Press the seam allowances to one side. Trim away the dog ear points. Repeat for a total of 124 pieced Half-Square-Triangle units measuring 4½" x 4½", including the seam allowances.



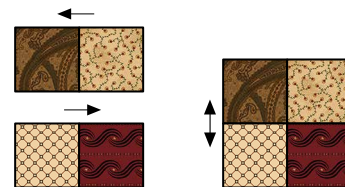
Make 124.

- 2 Join four assorted print 1½" x 4½" rectangles along the long edges. Press the seam allowances to one side. Repeat for a total of 64 pieced Rail Fence units measuring 4½" square, including the seam allowances.



Make 64.

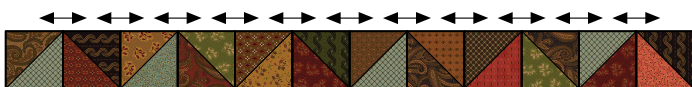
- 3 Select two assorted print and two assorted neutral print 2½" squares. Lay out the pieces as shown. Join the pieces in each horizontal row. Press the seam allowances toward the assorted prints. Join the rows. Press the seam allowances open. Repeat for a total of 100 pieced Four Patch units measuring 4½" square, including the seam allowances.



Make 100.

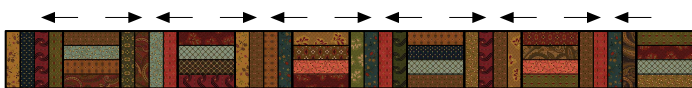
PIECING THE QUILT CENTER

- Using the illustration as a guide, join 12 pieced Half-Square-Triangle units end-to-end. Press the seam allowances open. Repeat for a total of six pieced Half-Square-Triangle rows measuring $4\frac{1}{2}$ " x $48\frac{1}{2}$ ", including the seam allowances. Reserve the remaining Half-Square-Triangle units.



Make 6.

- Referring to the illustration, join 12 pieced Rail Fence units end to end. Press the seam allowances toward the vertically positioned units. Repeat for a total of five pieced Rail Fence rows measuring $4\frac{1}{2}$ " x $48\frac{1}{2}$ ", including the seam allowances. Reserve the remaining Rail Fence units.

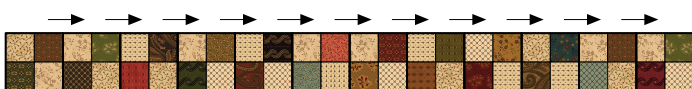


Make 5.

- Using the pictured quilt as a guide, lay out the six pieced Half-Square-Triangle rows and the five pieced Rail Fence rows in alternating positions. Join the rows. Press the seam allowances toward the Rail Fence rows. The pieced quilt center should now measure $44\frac{1}{2}$ " x $48\frac{1}{2}$ ", including the seam allowances.

PIECING AND ADDING THE INNER BORDER

- Referring to the illustration to correctly orient the position of the light and dark prints, join 12 pieced Four Patch units end-to-end. Press the seam allowances to one side, all in the same direction. Repeat for a total of two pieced side quilt center checkerboard strips measuring $4\frac{1}{2}$ " x $48\frac{1}{2}$ ", including the seam allowances. Using the pictured quilt as a guide, join these pieced strips to the right and left sides of the quilt center. Press the seam allowances toward the checkerboard strips.



Make 2.

- Using 13 pieced Four Patch units for each strip, repeat step 1 to make two pieced top and bottom checkerboard strips measuring $4\frac{1}{2}$ " x $52\frac{1}{2}$ ", including the seam allowances. Join these pieced strips to the remaining sides of the quilt center, taking care to orient the light and dark prints of the checkerboard strips correctly. Press the seam allowances toward the checkerboard strips. The pieced quilt top should now measure $52\frac{1}{2}$ " x $56\frac{1}{2}$ ", including the seam allowances.



Make 2.

PIECING AND ADDING THE OUTER BORDER

- Referring to the pictured quilt, join 14 reserved pieced Half-Square-Triangle units together end-to-end, with the diagonal center seam oriented to the right. Press the seam allowances open. Repeat for a total of two pieced strips measuring $4\frac{1}{2}$ " x $56\frac{1}{2}$ ", including the seam allowances. Using the pictured quilt as a guide, join these pieced strips to the right and left sides of the quilt top. Press the seam allowances toward the inner checkerboard border.
- Using 13 reserved pieced Half-Square-Triangle units for each strip, repeat step 1 to make a pieced top and bottom strip. Referring to the pictured quilt, join a reserved pieced Rail Fence unit to each end of the pieced strips. Press the seam allowances toward the Rail Fence units. Join these strips to the remaining sides of the quilt top. Press the seam allowances toward inner checkerboard border. The pieced quilt top should now measure $60\frac{1}{2}$ " x $64\frac{1}{2}$ ", including the seam allowances.

COMPLETING THE QUILT

Layer the quilt top, batting, and backing. Quilt the layers. Join the random lengths of $2\frac{1}{2}$ "-wide assorted print rectangles to make a strip, and use it to bind the quilt.

Every effort has been made to ensure that all projects are error free. All the information is presented in good faith, however no warranty can be given nor results guaranteed as we have no control over the execution of instructions. Therefore, we assume no responsibility for the use of this information or damages that may occur as a result. When errors are brought to our attention, we make every effort to correct and post a revision as soon as possible. Please make sure to check www.henryglassfabrics.com for pattern updates prior to starting the project. We also recommend that you test the project prior to cutting for kits. Finally, all free projects are intended to remain free to you and are not for resale.

Katie's Cupboard Fabrics in the Collection



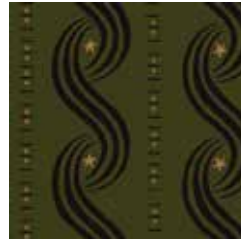
6670-33



6670-88



6670-99



6671-66



6671-88



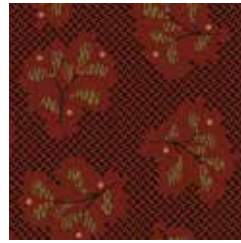
6671-99



6672-44



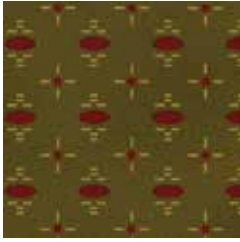
6672-66



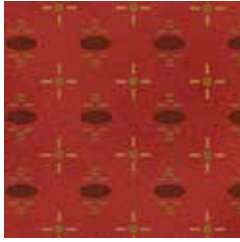
6672-88



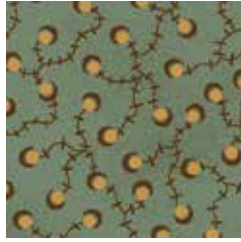
6673-30



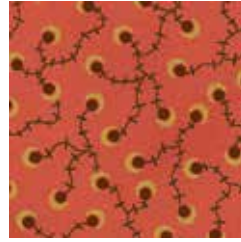
6673-66



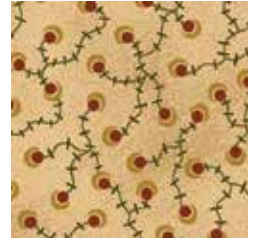
6673-88



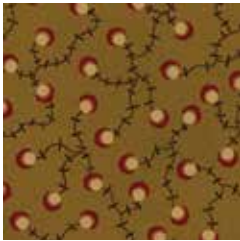
6674-11



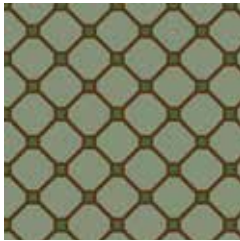
6674-22



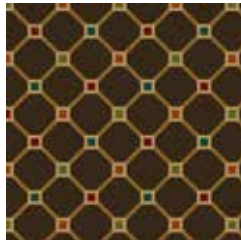
6674-40



6674-44



6675-11



6675-33



6675-40



6676-40



6676-44



6676-77



6677-33



6677-66



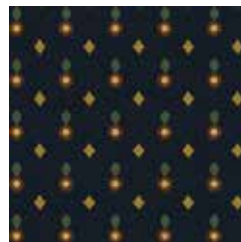
6677-88



6678-33



6678-40



6678-77