



HOFFMAN FABRICS
EST.1924

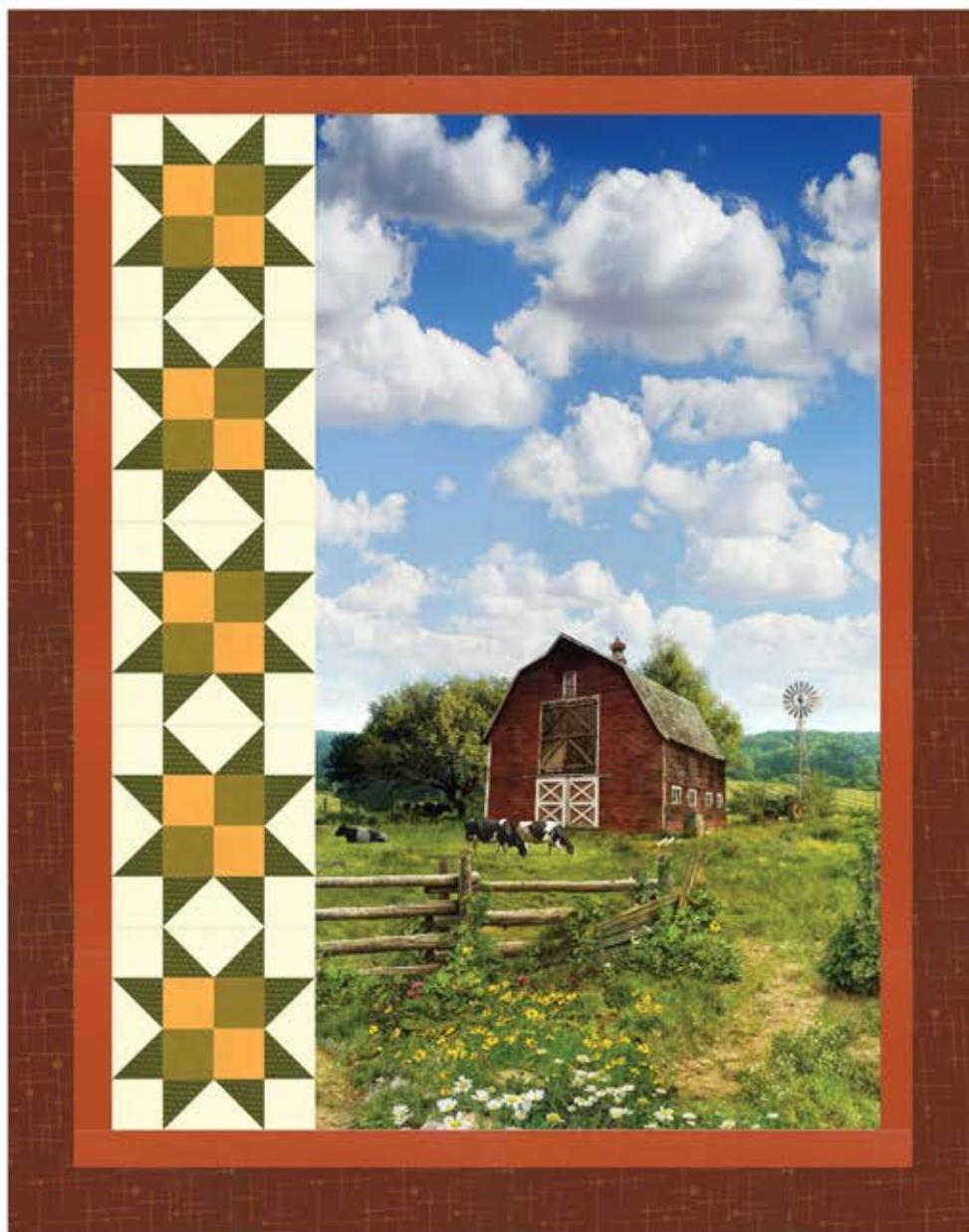
Hoffman
A QUILT INNOVATION COMPANY

Mountainpeak
Creations™

PASTORAL RETREAT

BEGINNER |

Finished Quilt: 39" X 48"



Quilt design by Kari Nichols of Mountainpeak Creations, featuring American Byways, a Hoffman Spectrum Digital print, Indah Batiks and Hand-dyes. The "Cornflower" 4-patch stars are the perfect accents to the idealic country scene.

Free pattern available at hoffmanfabrics.com



Yardage Chart

<i>FABRIC</i>	
P4328 16-Sky	2/3 yard
100 165-Melon	1/2 yard
100 432-Dijon	1/8 yard
100 526-Incense	3/8 yard
100 624-Gold Ochre	1/8 yard
102 96-Olive	1 yard *

* Binding included



P4328 16-Sky



100 165-Melon



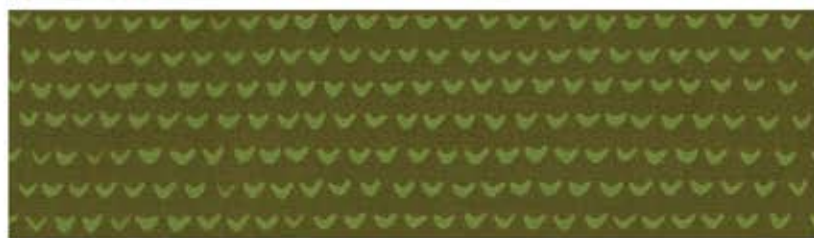
100 432-Dijon



100 526-Incense



100 624-Gold Ochre



102 96-Olive

Pastoral Retreat

Quilt design by Kari Nichols
of Mountainpeek Creations

39" x 48" finished size

Cutting

4 Patch- from the Dijon and the Gold Ochre solids cut (1) 2 ½" strip WOF (each).

From the Melon (background), for the Flying Geese and corner squares- cut (2) 4 ½" WOF strips. Sub-cut (20) 2 ½" x 4 ½" rectangles.

Also from the Melon, cut (2) 2 ½" WOF strips. Sub-cut (20) 2 ½" x 2 ½" squares for corners.

From the Olive, for the Flying Geese, cut (3) 2 ½" WOF strips and sub-cut (40) 2 ½" x 2 ½" squares.

Also from the Olive, cut (5) 2 ½" WOF strips for binding.

For the inner border, cut (4) 2" WOF strips. Sew all short ends together to make one long strip.

For the outer border, cut (5) 3" WOF strips. Sew all short ends together to make one long strip.

Construction

Sew the Dijon and Gold Ochre strips together lengthwise. Cut (10) 2 ½" x 4 ½" segments. Join segments into (5) 4 ½" x 4 ½" squares.

For the Flying Geese units, draw a diagonal line on the wrong side of Olive squares. Place a square, right sides together, at a corner of (1) Melon rectangle. Sew on the drawn line. Trim ¼" away from the sewn line. Open and press to reveal a Olive corner triangle. Repeat with another Olive square on the opposite side, to complete 1 Flying Geese unit.

Sew 1 Flying Geese unit to each side of the Four Patch squares. With the remaining Flying Geese units, attach a Melon square to each end. Sew this strip to the top and bottom of the center unit.

Sew the star units in a vertical column of 5 blocks. Once this column is pressed, measure down the middle. Cut the feature panel height to this measurement. Attach the 5 blocks to the left side of the feature panel.

Measure down the middle, from top to bottom and cut (2) inner border strips to this measurement. Attach to the left and right sides of the center quilt.

Measure across the middle, from left to right and cut (2) strips to this measurement. Attach a strip to the top and the bottom.

Repeat this process for the outer border.

Layer the backing, batting and top. Quilt as desired and attach binding.