

Lewis & Irene

threaded with love

To Catch A Dream Quilt

Designed and made by Sally Ablett

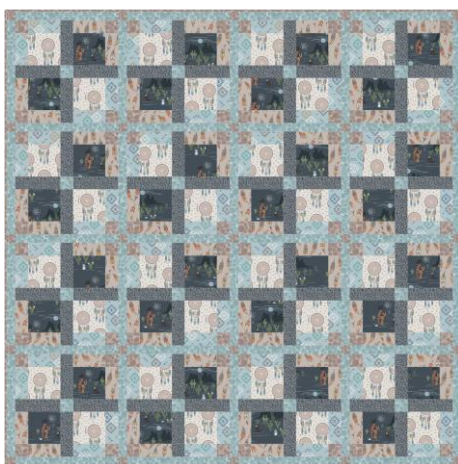
Size: 53" x 53"

Block size: 12" Square

DESIGN 1



DESIGN 2



DESIGN 3



FABRIC REQUIREMENTS (To Catch A Dream Collection)

DESIGN 1

Fabric 1: 50cm - A170.1 (Daytime dream catching)
Fabric 2: 50cm - A171.2 (Dream swirls on sand)
Fabric 3: 50cm - A172.2 (Dream catchers on sand)
Fabric 4: 50cm - A173.1 (Triangle print on cream)
Fabric 5: 50cm - A174.3 (Feathers on duck egg)
Fabric 6: 75cm - BB84 (Terracotta bumbleberries)
Fabric 7: 75cm - BB92 (Nightmare blue bumbleberries)
60" square wadding
60" square backing

DESIGN 2

Fabric 1: 50cm - A170.3 (Nighttime dream catching)
Fabric 2: 50cm - A171.3 (Dream swirls on nighttime)
Fabric 3: 50cm - A172.2 (Dream catchers on sand)
Fabric 4: 50cm - A173.1 (Triangle print on cream)
Fabric 5: 50cm - A174.3 (Feathers on duck egg)
Fabric 6: 75cm - BB77 (Light brown bumbleberries)
Fabric 7: 75cm - BB81 (Light blue bumbleberries)
60" square wadding
60" square backing

DESIGN 3

Fabric 1: 50cm - A170.2 (Dream catching on sand)
Fabric 2: 50cm - A171.1 (Dream swirls on cream)
Fabric 3: 50cm - A172.3 (Dream catchers on light)
Fabric 4: 50cm - A173.3 (Triangle print on cream)
Fabric 5: 50cm - A174.1 (Feathers on cream)
Fabric 6: 75cm - BB81 (Light blue bumbleberries)
Fabric 7: 75cm - BB40 (Off white bumbleberries)
60" square wadding
60" square backing

CUTTING

Cut across width of fabric.

1. From fabric 1 cut:
 - 32 x 4¼" x 4¼"
2. From fabric 2 cut:
 - 64 x 2" x 5¾"
3. From fabric 3 cut:
 - 32 x 4¼" x 4¼"
4. From fabric 4 cut:
 - 64 x 2" x 4¼"
5. From fabric 5 cut:
 - 64 x 2" x 4¼"
6. From fabric 6 cut:
 - 64 x 2" x 2"
 - 25 x 1½" x 1½"
7. From fabric 7 cut:
 - 16 x 2" x 2"
 - 40 x 1½" x 12½"

PIECING

Use ¼" seam allowance throughout. Press all seams open unless otherwise noted.

1a. Take one, 4¼" fabric 3 square, one 2" fabric 6 square and one of each, 2" x 4¼" fabric 4 rectangles

b. Arrange pieces and join together in pairs. Join pairs together to make one quarter unit

DESIGN 1



DESIGN 2



DESIGN 3



c. Make a second quarter unit with same fabrics

DESIGN 1



DESIGN 2



DESIGN 3

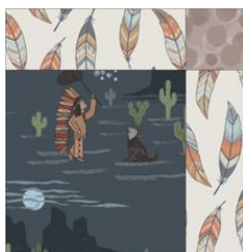


2. Make two similar quarter units with 4¼" fabric 1 squares and 2" x 4¼" fabric 5 rectangles with 2" fabric 6 squares

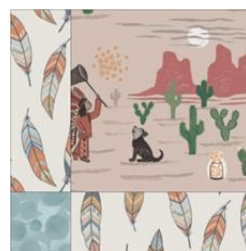
DESIGN 1



DESIGN 2



DESIGN 3



PIECING (continued)

3a. Join quarter units together with four, 2" x 5³/₄" fabric 2 rectangles and one, 2" fabric 7 square to make block

b. Block should measure 12¹/₂" square

DESIGN 1



DESIGN 2



DESIGN 3



4. Repeat to make sixteen blocks in total.

ASSEMBLY

1a. Arrange blocks in four rows of four blocks together with 1¹/₂" fabric 6 squares and 1¹/₂" x 12¹/₂" fabric 7 strips

b. Join pieces together in rows

c. Join rows together to complete quilt top

COMPLETION

1. Sandwich quilt top, wadding and backing. Pin or baste layers

2. Quilt as desired

3. Double bind edges with 2¹/₂" fabric 6 strips