

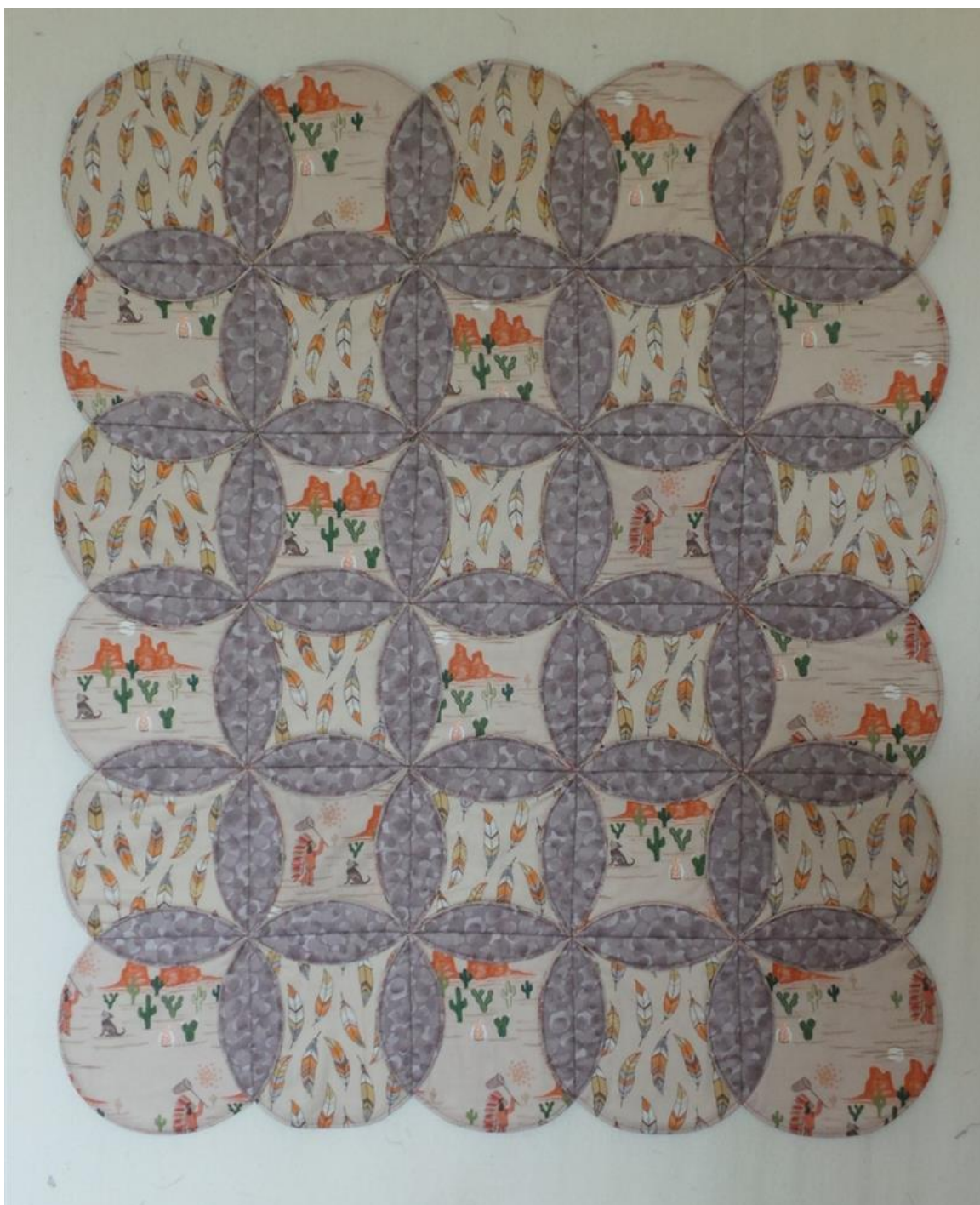
Lewis & Irene

threaded with love

To Catch A Dream Small Quilt

Designed and made by Sally Ablett

Size: 30" x 35"



FABRIC REQUIREMENTS (To Catch A Dream Collection)

Fabric 1: ½yd - ½mtr - A170.1 (Daytime dream catching)

Fabric 2: ½yd - ½mtr - A174.1 (Feathers on cream)

Fabric 3: 1yd - 1mtr - BB77 (Light Brown)

Wadding - 1yd - 1mtr

CUTTING

Cutting for this quilt it was base on an 8" circle. You may like to have a bigger circle so you will need more fabric. A tea plate is a good size for your circle

1. From fabric 1 cut:
 - 15 x the circle 8"
2. From fabric 2 cut:
 - 15 x the circle 8"
3. From fabric 3 cut:
 - 30 x the circle 8"
4. From wadding cut:
 - 30 x the circle 8"

ASSEMBLING THE BLOCKS

Take your fabrics wadding, backing and pattern fabric top (this will be right sides together)

Stitch all the way around the circle. Do this to all your circles. 15 will be fabric 1 and 3 and the other 15 will be with fabric 2 and 3

Trim away the wadding close to the stitching line, clip all the way around your circle



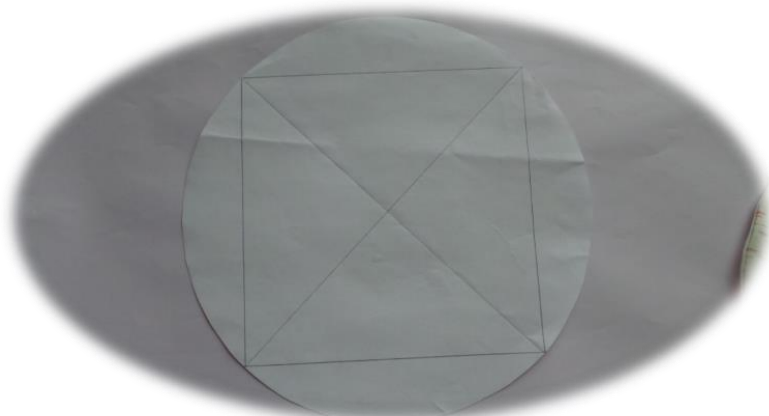
Make a small opening on the side for turning. On some the cut will have to be on the right or the left. You will see as you are making the blocks up. On the outside ones!



Turn to the right side and press well

Next you will need to work out what size to mark for folding over sides

Take your circle fold in half and the fold in half the other way



ASSEMBLING THE BLOCKS (continued)

You can draw a line on the folds, now you will see you can join to get you square. Make a template from this. Place onto your circles for making line. Not all the circles will need to be marked on all four sides. Corners only twice and the other outside blocks three times.



Lay them out as in main photo. Join together in rows and then the rows together
Match the line on each side pin into place and stitch together



Then join your rows together to complete the quilt