

# Lewis & Irene

*threaded with love*

## Enchanted Forest Quilt

*Designed and made by Sally Ablett*

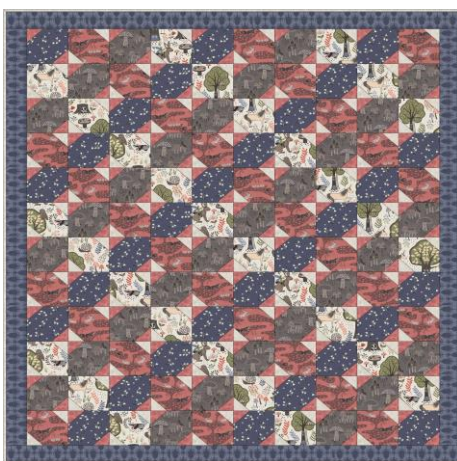
Size: 44" x 52"

Block: 8" square

**DESIGN 1**



**DESIGN 2**



**DESIGN 3**



### **FABRIC REQUIREMENTS (Enchanted Forest Collection)**

#### **DESIGN 1**

Fabric 1: 50cm - A185.3 (Enchanted Forest on midnight blue)

Fabric 2: 50cm - A186.2 (Snowdrops on dusk red)

Fabric 3: 50cm - A187.1 (Fairy houses on light biscuit)

Fabric 4: 50cm - A188.1 (Bunny tunnels on earth)

Fabric 5: 50cm - A189.2 (Owls on forest green)

Fabric 6: 40cm - BB41 (Light Linen Bumbleberries)

Fabric 7: 70cm - BB90 (Olive Bumbleberries)

48" x 56" wadding

48" x 56" backing

#### **DESIGN 2**

Fabric 1: 50cm - A185.1 (Enchanted Forest on cream)

Fabric 2: 50cm - A186.3 (Snowdrops on midnight blue)

Fabric 3: 50cm - A187.2 (Fairy houses on chocolate)

Fabric 4: 50cm - A188.2 (Bunny tunnels clay red)

Fabric 5: 50cm - A189.3 (Owls on midnight blue)

Fabric 6: 40cm - BB84 (Terracotta Bumbleberries)

Fabric 7: 70cm - BB41 (Light Linen Bumbleberries)

48" x 56" wadding

48" x 56" backing

#### **DESIGN 3**

Fabric 1: 50cm - A185.2 (Enchanted Forest on dusky red)

Fabric 2: 50cm - A186.1 (Snowdrops on light biscuit)

Fabric 3: 50cm - A187.3 (Fairy houses on midnight)

Fabric 4: 50cm - A188.3 (Bunny tunnels on forest green)

Fabric 5: 50cm - A189.1 (Owls on latte)

Fabric 6: 40cm - BB78 (Earth Bumbleberries)

Fabric 7: 70cm - BB92 (Nighttime Blue Bumbleberries)

48" x 56" wadding

48" x 56" backing

## CUTTING

Cut across width of fabric

**1.** From fabrics 1, 2, 3 and 4 cut:  
x4 4½" strips sub cut into x30 4½" squares

**2.** From fabric 5 cut:  
x5 2½" strips - border

**3.** From fabric 6 cut:  
x4 2½" strips sub cut into x60 2½" squares

Cut squares in half along diagonal to make one hundred and twenty triangles

**4.** From fabric 7 cut:

x4 2½" strips sub cut into x60 2½" squares

Cut squares in half along diagonal to make one hundred and twenty triangles

x5 2½" strips - binding

## PIECING

Use ¼" seam allowance throughout. Press all seams open unless otherwise noted

- 1a. Take 4½" fabric 2 and fabric 3 squares and measuring 1¾" from top left corner, cut a triangle from corner
- b. Cut a 1¾" triangle from opposite bottom right corner
2. Cut 1¾" triangles from bottom left and top right corners from 4½" fabric 1 and fabric 4 squares in a similar manner
- 3a. Take 2½" fabric 6 triangles and join triangles to trimmed corners of fabric 2 and fabric 3 squares

### DESIGN 1



### DESIGN 2



### DESIGN 3



b. Units should measure 4½" square

4. Join 2½" fabric 7 triangles to trimmed corners of fabric 1 and fabric 4 squares in the same way

### DESIGN 1



### DESIGN 2



### DESIGN 3





5a. Take one of each unit and arrange in two rows of two units

**DESIGN 1**

**DESIGN 2**

**DESIGN 3**



b. Join blocks together in pairs and then join pairs together to make block A

c. Make fifteen block A in total

d. Block should measure 8½" square

6. Make fifteen block B in same way with the remaining units

**DESIGN 1**

**DESIGN 2**

**DESIGN 3**



### **ASSEMBLY**

1a. Arrange blocks into six rows of five blocks, alternating blocks

b. Join blocks together in rows

c. Join rows together to make quilt centre

2a. Take 2½" fabric 5 strips and join strips together end to end

b. Sub cut two, 2½" x 48½" strips from joined strips and join to opposite sides of quilt top

c. Sub cut two, 2½" x 44½" strips from remainder and join to top and bottom edges to complete quilt top

### **COMPLETION**

Sandwich quilt top, wadding and backing. Pin or baste layers

Quilt as desired

Double bind edges with 2½" fabric 7 strips