



Designed By: Cyndi Hershey
Finished Quilt Size: 56½" x 76½"

Lane
Kendrick



24794 X



24795 X



24796 A



24796 E



24797 B



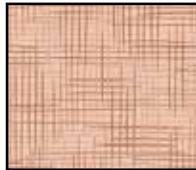
24798 K



24798 A



24779 T



24776 A



24776 E



24778 QB



23528 A

| QUILT REQUIREMENTS | | | |
|------------------------|------------------------|-----------------|---------|
| Mountain Horses | Canyon Horses | | 12 Kits |
| Design: | | Yards | Bolts |
| 24794 X | 24795 X | (1) 24" panel | 1 |
| 24796 A | 24796 E | 1 | 1 |
| 24797 B | 24796 A | 1 | 1 |
| 24798 K | 24798 A | 1 $\frac{1}{3}$ | 2 |
| 24779 T (inc. binding) | 24779 T (inc. binding) | 1 $\frac{1}{3}$ | 2 |
| 24776 A | 24776 E | 1 $\frac{1}{8}$ | 1 |
| 24778 QB | 23528 A | $\frac{2}{3}$ | 1 |
| 24797 B (also backing) | 24798 A (also backing) | 4 $\frac{3}{4}$ | 4 |

Additional Supplies: Template Plastic

Cutting

Note: All strips are cut across the width of the fabric (perpendicular to selvages) unless noted otherwise. $\frac{1}{4}$ " seam allowance is assumed.

Note: Mountain Horses info is shown first followed by Canyon Horses info. Fabrics are referred to by letter within instructions.

A. 24794X (mountain horse panel) -OR- 24795-X (canyon horse panel)

- Cut panel 22" x 40 $\frac{1}{2}$ " keeping design centered.

B. 24796 A (brown packed horse print) -OR- 24796 E (tan packed horse print)

- Cut 6 $\frac{1}{8}$ " square from template plastic.
- Position template diagonally on fabric so that print is vertical within diamond. Trace and cut thirteen diamonds.

C. 24797 B (blue stream print) -OR- 24796 A (brown packed horse print)

- Using template, trace and cut twelve diamonds keeping print vertical within each diamond.

D. 24798 K (gray canyon print) -OR- 24798 A (tan canyon print)

- Cut (1) 2 $\frac{1}{2}$ " strip; subcut (6) 2 $\frac{1}{2}$ " squares and (2) 2 $\frac{1}{2}$ " x 6 $\frac{1}{2}$ " rectangles.
- Cut (8) 4 $\frac{1}{2}$ " strips.

E. 24779 T (rust tonal squares) -OR- 24779 T (same)

- Cut (3) 1 $\frac{3}{4}$ " strips. Sew together end to end with diagonal seams; press. From this, cut (2) 1 $\frac{3}{4}$ " x 44 $\frac{1}{2}$ " strips.
- Cut (4) 2 $\frac{1}{2}$ " strips; subcut (50) 2 $\frac{1}{2}$ " squares.
- Cut (3) 2 $\frac{1}{2}$ " strips. Sew together end to end with diagonal seams; press. From this, cut (2) 2 $\frac{1}{2}$ " x 62" strips. (If you need additional length, sew remainder of 2 $\frac{1}{2}$ " strip from above to end of strip.)
- Cut (7) 2 $\frac{1}{2}$ " strips for binding.

F. 24776 A (wheat tonal weave) -OR- 24776 E (vanilla tonal weave)

- Cut (4) 2 $\frac{1}{2}$ " strips.
- Cut (8) 2 $\frac{7}{8}$ " strips; subcut (100) 2 $\frac{7}{8}$ " squares. Cut each square diagonally in half to yield two hundred half-square triangles.

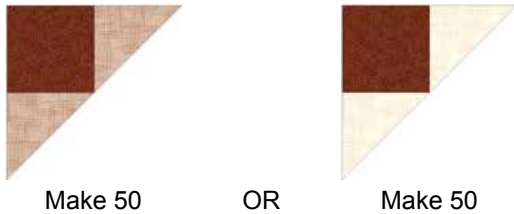
G. 24778 QB (teal tonal curly scrolls) -OR- 23528 A (nutmeg tonal print)

- Cut (8) 2 $\frac{1}{2}$ " strips. Use four strips to cut (56) 2 $\frac{1}{2}$ " squares.

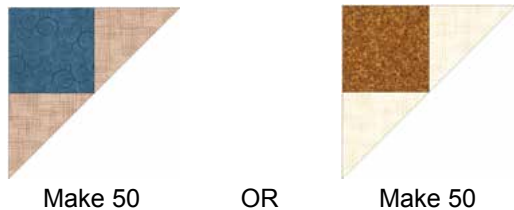
Construction

Block 1 (8" finished)

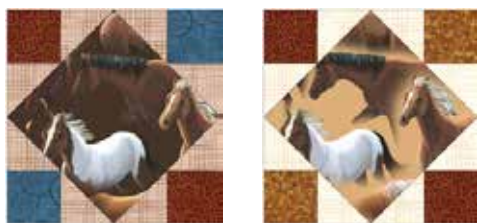
1. Sew a (F) $2\frac{7}{8}$ " triangle to adjacent sides of one (E) $2\frac{1}{2}$ " square. Press toward the triangles. Repeat to make fifty units.



2. Sew a (F) $2\frac{7}{8}$ " triangle to adjacent sides of one (G) $2\frac{1}{2}$ " square. Press toward the triangles. Repeat to make fifty units.



3. Sew a unit from step one to opposite sides of a (B) diamond. Press toward the triangle units.
4. Sew a unit from step two to remaining sides of the diamond. Press toward the triangle units. Repeat to make thirteen Block 1.



Make 13- Block 1

Block 1a (8" finished)

1. Sew remaining triangle units to (C) diamonds. Make twelve Block 1a.



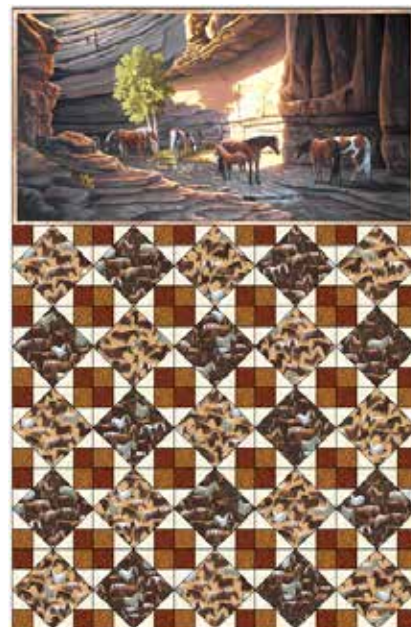
Make 12- Block 1a

Inner quilt construction

1. Referring to quilt image for correct placement, sew Block 1 and Block 1a into rows of five blocks each alternating blocks within rows. Press seams within rows toward Block 1.
2. Sew rows together and press. Sew panel to top of block section. Press toward panel.



OR

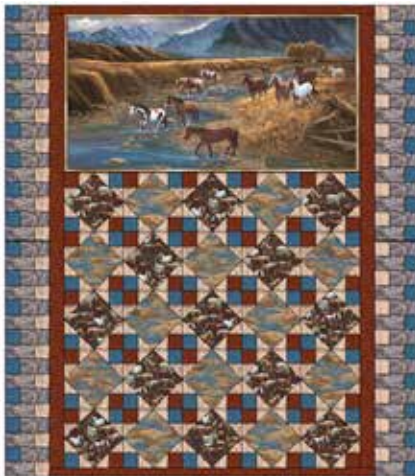




- Sew (E) 2½" x 62" strips to both sides of quilt. Press toward the strips. Sew (E) 1¾" x 44½" strips to the top and bottom of quilt. Press toward the strips.

Pieced Borders

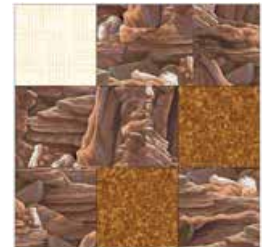
- Sew one (F) 2½" strip to one (D) 4½" strip. Press toward the (D) strip. Repeat to make four Strip Set #1.
- Sew one (G) 2½" strip to one (D) 4½" strip. Press toward the (D) strip. Repeat to make four Strip Set #2.
- Cut (56) 2½" segments from Strip Set #1.
- Cut (58) 2½" segments from Strip Set #2.
- Referring to quilt image for correct placement, sew sixteen each of #1 and #2 segments alternately together; press. Repeat to make two side borders. Sew borders to quilt. Press toward inner border.



- Sew one (D) 2½" square to each side of one (G) 2½" square. Press toward the (D) squares. Repeat to make two units.
- Sew together one Strip Set #1 unit, one Strip Set #2 unit and one unit from step 6 to make one Border Block A. Press. Repeat to make two blocks (6" finished).



Make 2



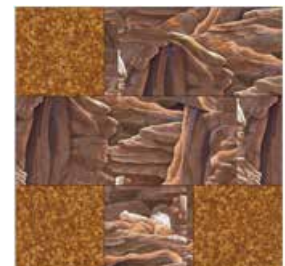
Make 2

OR

- Sew one (G) 2½" square to each side of one (D) 2½" square. Press toward the (G) squares. Repeat to make two units.
- Sew together one Strip Set #2 segment, one (D) 2½" x 6½" rectangle and one unit from step 8 to make one Border Block B. Press. Repeat to make two blocks (6" finished).



Make 2



Make 2

OR

- Referring to quilt image for correct placement, sew eleven each of #1 and #2 segments alternately together; press. Repeat to make top and bottom borders.
- For top border, sew one Border Block A to left end of border and one Border Block B to right end of border. Press toward the border blocks. Sew border to top of quilt. Press toward inner border.
- For bottom border, sew one Border Block B to the left end of border and one Border Block A to the right end of border. Press toward the border blocks. Sew border to bottom of quilt. Press toward inner border.



Finishing

1. Prepare backing using two widths with vertical seam/s. Press seams open.
2. Layer backing, batting and quilt top. Baste and quilt as desired.
3. Trim layers even with quilt top.
4. Prepare binding using (E) 2½" strips. Sew binding to quilt using your preferred method.