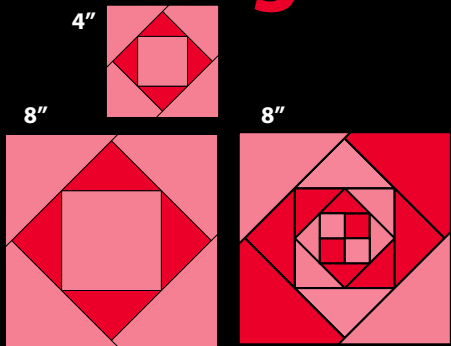




# NON-SLIP Square on Square 8" Trim Tool



Create 4" or 8" square on square blocks. No calculations - the cutting measurements are printed right on the tool. Trimming each round as triangles are added creates perfect blocks!

Designed by Jean Ann Wright

#CGRJAW8  
Made in USA



SEE A DEMO  
SCAN WITH ANY  
QR READER



Creative Grids is covered by U.S. Trademark Registration No. 2,796,615

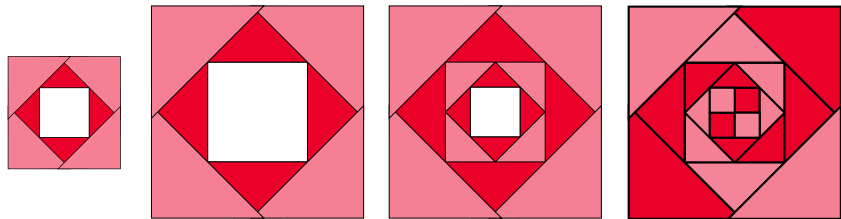
Creative Grids® UK, Ltd.  
Unit 23A Pate Road  
Leicester Road Industrial Estate  
Meitton Mowbray  
Leicestershire, LE13 0RG England  
www.creativegrids.com

Creative Grids® USA, Inc.  
400 W. Dussel Dr. Ste B,  
Maumee, OH 43537  
www.creativegridsUSA.com



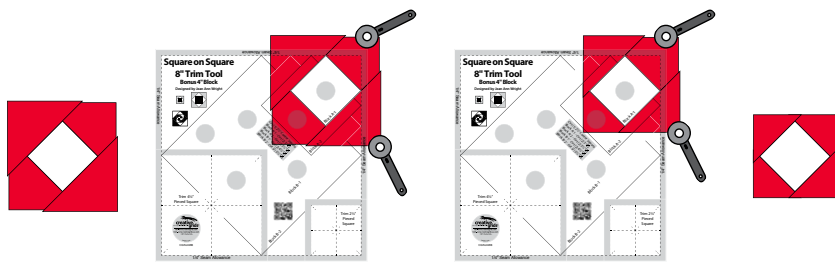
## NON-SLIP Square on Square 8" Trim Tool

Make a variety of 8" Square on Square blocks (or 4" bonus blocks) by following the cutting chart printed on the tool. Add the triangles sequentially to the square - then trim each round for perfect piecing!

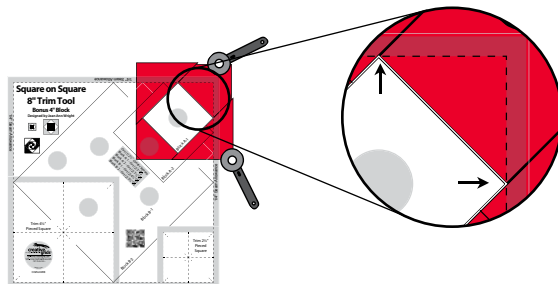


### For a 4" finished block Step A-1

Center and sew the Block A-1 triangles to opposite sides of the center square. Press. Add the remaining two triangles to the other two sides. Press. Place the square marked A-1 on the ruler on top of the fabric center square. Trim two adjoining sides. Turn the partially trimmed unit a half turn (180°) then trim the remaining two sides.



*Tip: If the sewn square does not fit exactly into the alignment square on the tool, be sure you match the two corners. This assures a 1/4" seam allowance.*

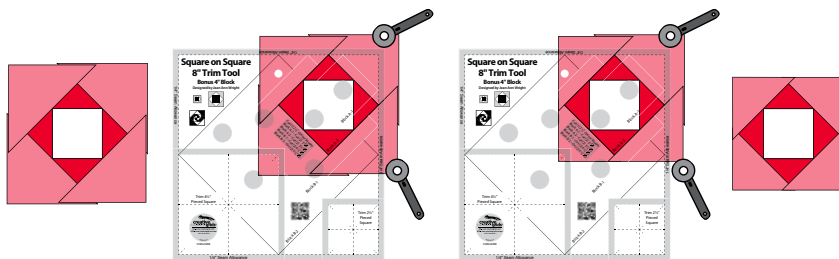


## NON-SLIP Square on Square 8" Trim Tool

### For a 4" finished block (cont.)

#### Step A-2

Center and sew the Block A-2 triangles to opposite sides of your pieced square. Press. Add the remaining two triangles to the other two sides. Press. Place the square marked A-2 on the ruler on top of the fabric center square. Trim two adjoining sides. Turn the partially trimmed unit a half turn (180°) then trim the remaining two sides.

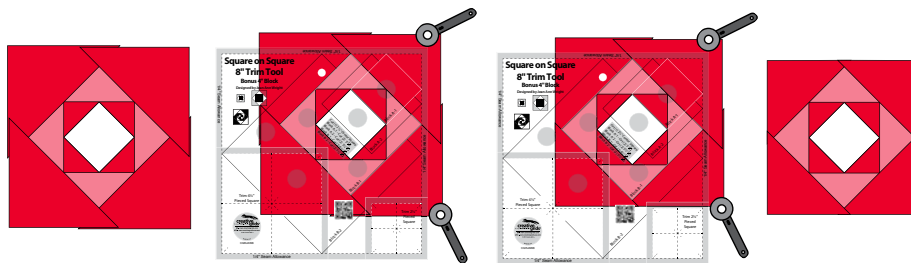


**NOTE:** The Square on Square block now measures 4 1/2" (4" finished). Continue with Steps B-1 and B-2 to create an 8" finished block. You may also choose to START with step B-1 - simply use a 4 1/2" fabric square (or pieced square) in the center.

### For an 8" finished block

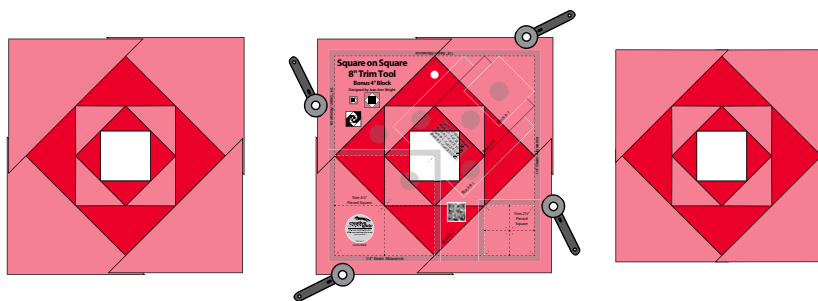
#### Step B-1

Center and sew the Block B-1 triangles to opposite sides of the center square. Press. Add the remaining two triangles to the other two sides. Press. Place the square marked B-1 on the ruler on the fabric center square. Trim two adjoining sides. Turn the partially trimmed unit a half turn (180°) then trim the remaining two sides.



#### Step B-2

Center and sew the Block B-2 triangles to opposite sides of the center square. Press. Add the remaining two triangles to the other two sides. Press. Place the square marked B-2 on the ruler on the fabric center square. Trim two adjoining sides. Turn the partially trimmed unit a half turn (180°) then trim the remaining two sides.



### Center Cutting / Trimming To Size

#### 2" Four-Patch

- cut (4) 2" squares

#### 4" Four-Patch

- cut (4) 3" squares

#### 2" Hourglass Square

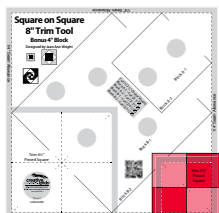
- cut (2) 3 1/2" squares, then cut in half on diagonal twice.

#### 4" Hourglass

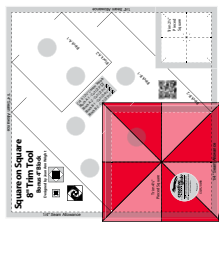
- cut (2) 5 1/2" squares, then cut in half on diagonal twice.

#### 4" Pinwheel

- cut (2) 3 1/2" squares, then cut in half on diagonal once.



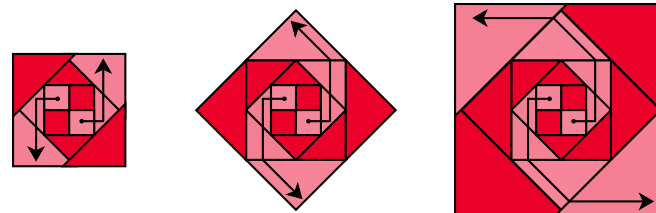
**Trimming**  
2 1/2" Center



**Trimming**  
4 1/2" Center

#### Snail's Trail Block

A Snail's Trail block can be created by simply changing the colors of the triangles.



Creative Grids® USA, Inc.  
400 W. Dussel Dr. Ste B,  
Maumee, OH 43537  
www.creativegridsUSA.com

Creative Grids® UK, Ltd.  
Unit 23A Pate Road  
Leicester Road Industrial Estate  
Melton Mowbray  
Leicestershire, LE13 0RG England  
www.creativegrids.com

Creative Grids is covered by U.S. Trademark Registration No. 2,796,615

08.25.15