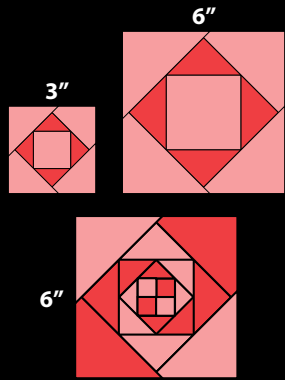




NON-SLIP

Square on Square 6" Trim Tool



Create 3" or 6" square on square blocks. No calculations - the cutting measurements are printed right on the tool. Trimming each round as triangles are added creates perfect blocks!

Designed by Jean Ann Wright

#CGRJAW7
Made in USA



SEE A DEMO
SCAN WITH ANY
QR READER



Creative Grids is covered by U.S. Trademark Registration No. 2,796,615

Creative Grids® UK, Ltd.
Unit 23A Pate Road
Leicester Road Industrial Estate
Milton Mowbray
Leicestershire, LE13 0RG England
www.creativegrids.com

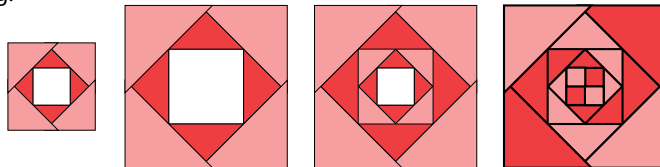
Creative Grids® USA, Inc.
400 W. Dussel Dr. Ste B,
Maumee, OH 43537
www.creativegridsUSA.com



NON-SLIP

Square on Square 6" Trim Tool

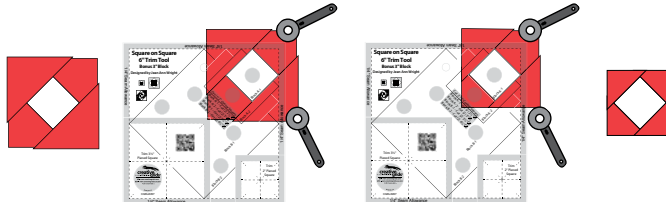
Make a variety of 6" Square on Square blocks (or 3" bonus blocks) by following the cutting chart printed on the tool. Add the triangles sequentially to the square - then trim each round for perfect piecing!



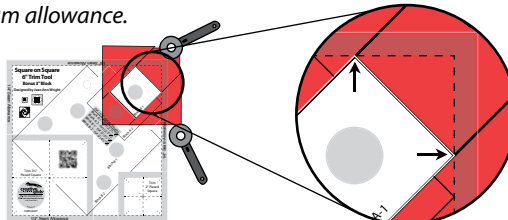
For a 3" finished block

Step A-1

Center and sew the Block A-1 triangles to opposite sides of the center square. Press. Add the remaining two triangles to the other two sides. Press. Place the square marked A-1 on the ruler on top of the fabric center square. Trim two adjoining sides. Turn the partially trimmed unit a half turn (180°) then trim the remaining two sides.



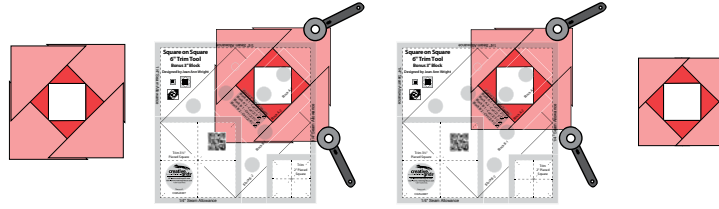
Tip: If the sewn square does not fit exactly into the alignment square on the tool, be sure you match the two corners. This assures a 1/4" seam allowance.



NON-SLIP Square on Square 6" Trim Tool

Step A-2

Center and sew the Block A-2 triangles to opposite sides of the pieced square. Press. Add the remaining two triangles to the other two sides. Press. Place the square marked A-2 on the ruler on top of the fabric center square. Trim two adjoining sides. Turn the partially trimmed unit a half turn (180°) then trim the remaining two sides.

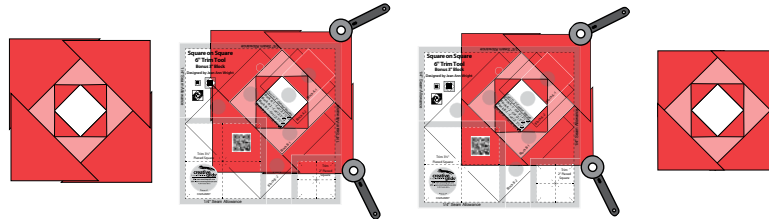


Note: The Square on Square block now measures 3 1/2" (3" finished). Continue with Steps B-1 and B-2 to create a 6" finished block. You may also choose to START with step B-1 - simply use a 3 1/2" fabric square (or pieced square) in the center.

For a 6" finished block

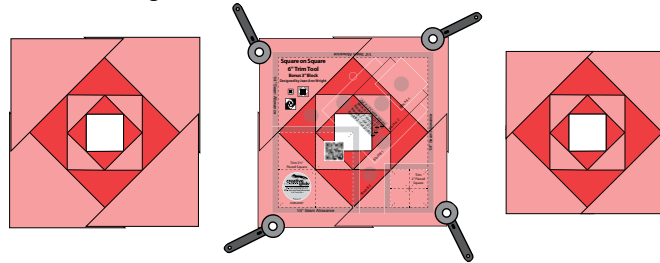
Step B-1

Center and sew the Block B-1 triangles to opposite sides of the center square. Press. Add the remaining two triangles to the other two sides. Press. Place the square marked B-1 on the ruler on the fabric center square. Trim two adjoining sides. Turn the partially trimmed unit a half turn (180°) then trim the remaining two sides.



Step B-2

Center and sew the Block B-2 triangles to opposite sides of the center square. Press. Add the remaining two triangles to the other two sides. Press. Place the square marked B-2 on the ruler on the fabric center square. Trim two adjoining sides. Turn the partially trimmed unit a half turn (180°) then trim the remaining two sides.



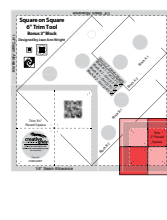
Center Cutting / Trimming To Size

2" Four-Patch - cut (4) 1 1/2" squares
3 1/2" Four-Patch - cut (4) 2 1/2" squares

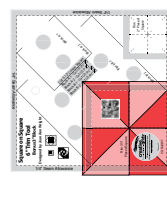
2" Hourglass Square - cut (2) 3" squares, then cut in half on diagonal twice.

3 1/2" Hourglass - cut (2) 4 1/2" squares, then cut in half on diagonal twice.

3 1/2" Pinwheel - cut (2) 3" squares, then cut in half on diagonal once.



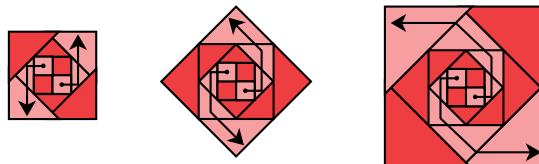
**Trimming
2" Center**



**Trimming
3 1/2" Center**

Snail's Trail Block

A Snail's Trail block can be created by simply changing the colors of the triangles.



Creative Grids is covered by U.S. Trademark Registration No. 2,796,615

08.25.15.1