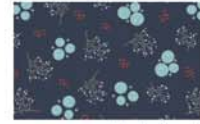




Chevron Arrows Quilt (Q-020)



Fabric requirements



Fabric A
2240805 #2
1/4 yard



Fabric B
2240804 #3
1/4 yard



Fabric C
2240805 #1
1/4 yard



Fabric D
2240803 #1
1/4 yard



Fabric E
2240801 #1
1/4 yard



Fabric F
2240805 #3
1/4 yard



Fabric G
2240803 #3
5/8 yard



Fabric H
2240801 #2
5/8 yard



Fabric I
2240804 #2
2-1/8 yards



Fabric J (Binding)
2240802 #2
1/2 yard



Backing
2240803 #2
4 yards

Exclusive Quilt Design by Marta Strzeszewski of From Marta with Love for Camelot Fabrics
Fabric collection: Happy Thoughts by Alisse Courter for Camelot Fabrics
The direction of the fabrics in the digital imagery may not be accurate to the final product.

FROM MARTA WITH LOVE
(Quilts & crafts)



Blog, Facebook, Twitter @CamelotFabrics
Pinterest, YouTube & Instagram @Camelot_Fabrics
camelotfabrics.com • camelotfabricsblog.com
Toll-Free: 1-800-361-4120 • 514-382-2400
info@camelotfabrics.com • www.camelotfabrics.com

Finished quilt size: 60" x 72"

OTHER TOOLS & SUPPLIES

2 yards extra-wide quilt batting (at least 74" wide)

Rotary cutter, cutting mat, rulers, straight pins, sewing machine, fabric maker, and threads to match your fabrics

NOTES

All seams are sewn with a 1/4" seam allowance.

Please wash, dry & iron your fabric before beginning, and trim selvages.

WOF = Width of Fabric.

Press seams open as you go.

CUTTING

	Fabric A	Fabric B	Fabric C	Fabric D	Fabric E	Fabric F	Fabric G	Fabric H
7-1/4" square	1	1	1	1	1	1	3	3
3-7/8" square	4	4	4	4	4	4	12	12
6-1/2" x 3-1/2" rectangle	4	4	4	4	4	4	12	12

Fabric I

Cut (1) 12" x 72" rectangle & (1) 24" x 72" rectangle.

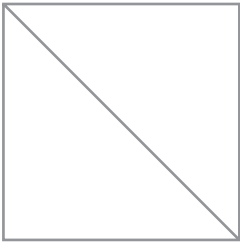
Fabric J (Binding)

Cut (7) 2-1/2" x WOF strips for Binding.

Backing

Cut (2) 72" x WOF rectangles.

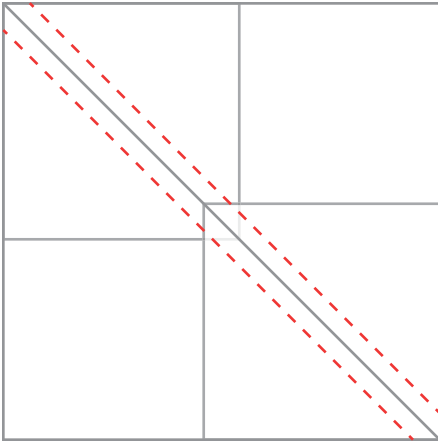




FLYING GEESE

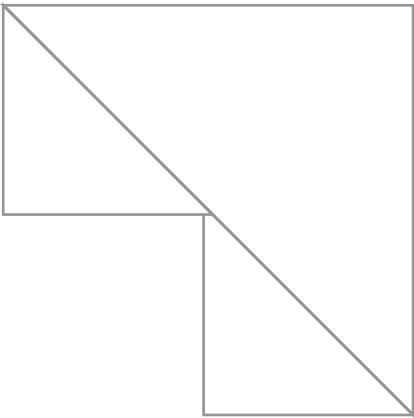
Note: each (1) 7-1/4" square + (4) 3-7/8" squares yields (4) Flying Geese.

1. Mark a diagonal line across the center of each of your 3-7/8" squares.

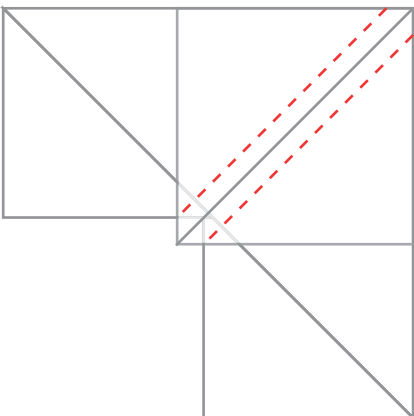


2. Place (2) matching 3-7/8" squares on (1) 7-1/4" square as shown, Right Sides together, with the small squares' diagonal lines touching.

Sew the small squares to the large square with a seam on either sides of the marked lines, 1/4" from the lines.

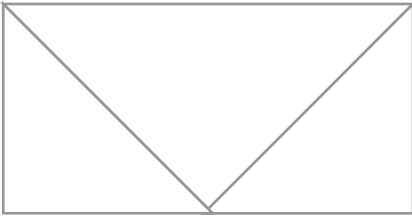


3. Cut along the center line, unfold the units and press the seams open. You now have (2) heart-shaped units like the one shown.



4. Place a matching 3-7/8" square on the corner of the 7-1/4" square that is opposite to the (2) small squares already attached.

Sew the new square to the large square with (2) seams, 1/4" from either side of its marked center line.



5. Cut along the small block's center line to yield (2) Flying Geese like the one shown.

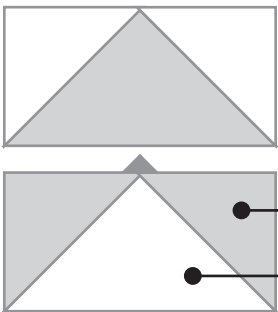
6. For each one of your Fabrics from A to F, make (4) Flying Geese from each of the following combinations:

Make (4) of Each

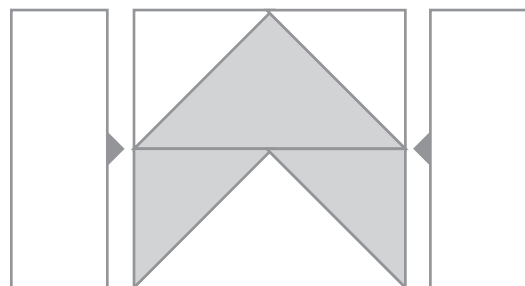
7-1/4" Square	3-7/8" Squares	
Fabric F	Fabric G	
Fabric A-D-B	Fabric H	
Fabric G	Fabric C-E-F	
Fabric C-E	Fabric G	
Fabric H	Fabric A-B-D	

CHEVRON BLOCKS

Note - each chevron block uses either Fabric G or Fabric H, but not both.



1. Sew the Flying Geese together in pairs as shown, with the smaller triangles of the lower unit matching the larger triangle of the upper unit.



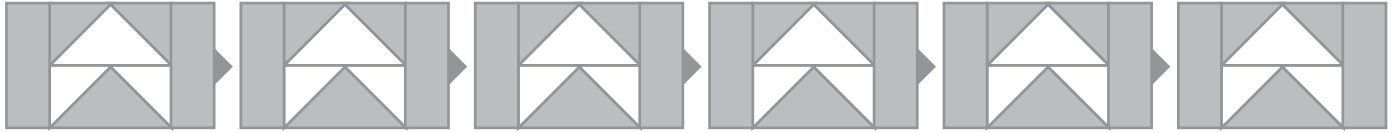
2. Sew a 6-1/2" x 3-1/2" rectangle to either short side of each Flying Geese unit. These rectangles should be made of the same fabric as the unit's background.



QUILT TOP

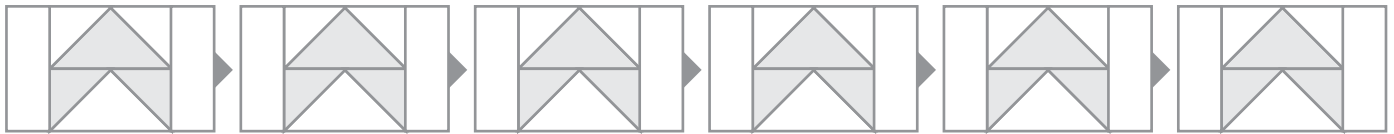
Note: Please refer to the quilt illustration on Page 1 for arranging the various parts of the quilt top.

1. Sew your (6) Chevron Blocks with Fabric G *Backgrounds* together end-to-end as shown, to make (1) right-pointing column.



● Fabric G ○ Various fabrics.

2. Sew your (6) Chevron Blocks with Fabric H *Arrows* together end-to-end as shown, to make (1) right-pointing column.



● Fabric H ○ Various fabrics.

3. Sew your (6) Chevron Blocks with Fabric G Arrows together and your (6) Chevrons Blocks with Fabric H Backgrounds together top-to-bottom, to make (1) upward-pointing column. Make sure to alternate between blocks using Fabric H and blocks using Fabric G.
4. Sew the right-pointing column from Step 1 to the right-hand side of your upward-pointing column.
5. Sew the right-pointing column from Step 2 to the right-hand side of the work.
6. Sew the 24" x 72" Fabric I rectangle to the left-hand side of the work, and the 12" x 72" Fabric I rectangle to the right-hand side of the work.

FINISHING THE QUILT

1. Sew the (2) Backing rectangles together along their 72" edges.
2. Sew the Fabric J strips together end-to-end and press for binding.
3. Layer your quilt top with the Backing & a layer of batting in between; baste & quilt as desired, and bind with the Fabric J strip.

ASSEMBLY LAYOUT

● Fabric G ● Fabric H ○ Various fabrics.

