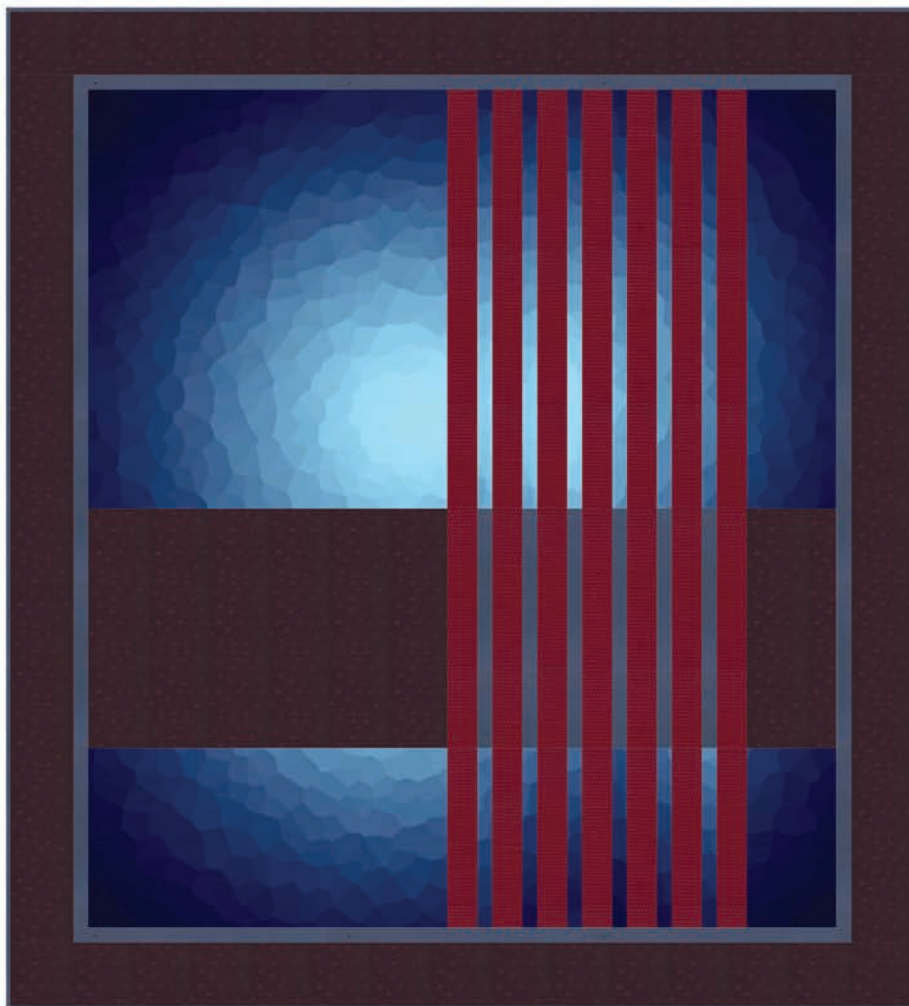


Create quilted modern art with this free pattern. Quilt design by Larene Smith featuring Supernova, a Hoffman Spectrum Digital Print panel designed by Jeanie Sumrall-Ajero. Shown with Me + You Indah Batiks.

BEGINNER |



Sapphire Colorway

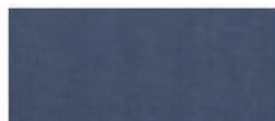
Finished Quilt: 61" x 67"



P4286 230-Sapphire



102 38-Burgundy



100 D7-Dusty Blue



116 34-Eggplant

Free pattern available at www.hoffmanfabrics.com

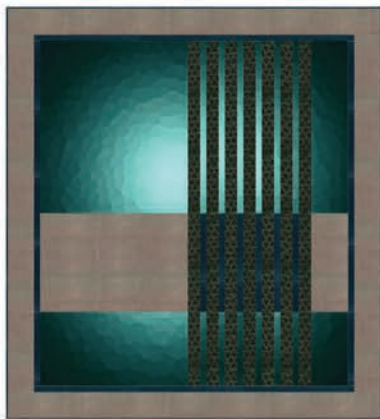
MODERN GEO

Quilt design by Larene Smith featuring Supernova, a Hoffman Spectrum Digital Print panel designed by Jeanie Sumrall-Ajero. Shown with Me + You Indah Batiks.

61" x 67"

Yardage Chart

FABRIC SAPPHIRE COLORWAY		
A	P4286 230-Sapphire	1 panel
B	102 38-Burgundy	7/8 yard
C	100 D7-Dusty Blue	1 yard
D	116 34-Eggplant	1 3/4 yards
FABRIC EMERALD COLORWAY		
A	P4286 31-Emerald	1 panel
B	107 494-Raven	7/8 yard
C	102 90-Spruce	1 yard
D	101 302-Stone	1 3/4 yards
FABRIC AMETHYST COLORWAY		
A	P4286 91-Amethyst	1 panel
B	110 133-Pacific	7/8 yard
C	106 14-Purple	1 yard
D	103 494-Raven	1 3/4 yards



Emerald Colorway



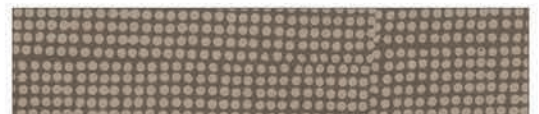
P4286 31-Emerald



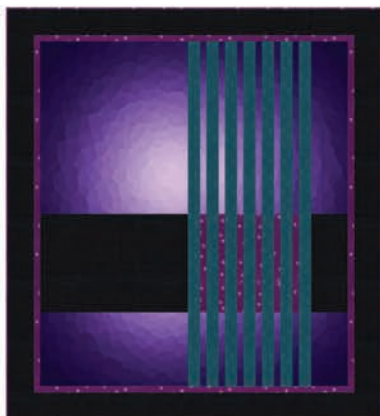
102 90-Spruce



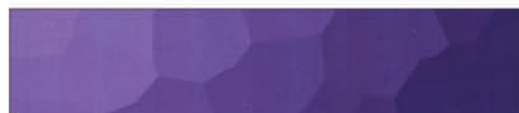
107 494-Raven



101 302-Stone



Amethyst Colorway



P4286 91-Amethyst



106 14-Purple



110 133-Pacific



103 494-Raven

General Information and Instructions

- All seams are sewn with a 1/4" seam allowance.
- Pre-wash and press with spray starch before cutting.
- WOF = Width of Fabric.
- Press seams open as much as possible to decrease bulk.

Note: Read all the instructions before beginning. When cutting the fabric label each piece for the appropriate section for less confusion. Always refer to the illustration on the COVER as a guide when sewing the sections together.

Step 1 – Cutting the Fabric

1. Fabric A – Fussy cut the panel to measure 41" square – Sub-cut the Panel into TWO SECTIONS measuring 41" x 28-1/2" (Piece A) and 41" x 12-1/2" (Piece B) and sub-cut those pieces as follows:

Note: When cutting be sure to mark the TOP of the piece as this will help maintain the correct position of the fabric when sewn together.

- a. Piece A – Sub-cut as follows:
 - i. (1) 24-1/2" x 28-1/2" rectangle – Top Row Left Corner
 - ii. (6) 1-1/2" x 28-1/2" rectangles – Top Row Middle
 - iii. (1) 6-1/2" x 28-1/2" rectangle – Top Row Right Corner
- b. Piece B – Sub-cut as follows:
 - i. (1) 24-1/2" x 12-1/2" rectangle – Bottom Row Left Corner
 - ii. (6) 1-1/2" x 12-1/2" rectangle – Bottom Row Middle
 - iii. (1) 6-1/2" x 12-1/2" rectangle – Bottom Row Right Corner
2. Fabric B (Long Vertical) – Cut (11) strips at 2-1/2" x WOF – Sub-cut into (7) 2-1/2" x 28-1/2" rectangles (Top Row Middle), (7) 2-1/2" x 12-1/2" rectangles (Bottom Row Middle), and (7) 2-1/2" x 16-1/2" rectangles (Middle Row Middle).
3. Fabric C (Accent, Inner Border, and Binding) – Cut (9) strips at 1-1/2" x WOF – Sub-cut as follows:
 - a. Pull (3) strips and cut (6) 1-1/2" x 16-1/2" (Middle Row Middle)
 - b. Sew the remaining (6) strips together at the 1-1/2" edge – Sub-cut into (2) 1-1/2" x 56-1/2" rectangles (Left and Right Sides) and (2) 1-1/2" x 52-1/2" rectangles (Top and Bottom) – Inner Border.
 - c. Cut (7) strips at 2-1/2" x WOF – Join all the 2-1/2" edges for the binding.
4. Fabric D (Horizontal Section and Outer Border) – Cut as follows:
 - a. Parallel to the SELVAGE cut (4) strips at 4-3/4" x 62" – Sub-cut into (2) 58-1/2" x 4-3/4" rectangles (Left and Right Sides) and (2) 61" x 4-3/4" rectangles (Top and Bottom) – Outer Border.
 - b. From the remainder of the fabric cut (1) 24-1/2" x 16-1/2" rectangles (Middle Row Right) and (1) 6-1/2" x 16-1/2" rectangle (Middle Row Left).

Step 2 – Top Row

5. Sew the following pieces together at the 28-1/2" edge from left to right as follows to measure 50-1/2" x 28-1/2" – Label "Top Row" and set aside for use later.
 - a. Fabric A 24-1/2", Fabric B 2-1/2", Fabric A 1-1/2", Fabric B 2-1/2", Fabric A 1-1/2", Fabric B 2-1/2", Fabric A 1-1/2", Fabric B 2-1/2", Fabric A 1-1/2", Fabric B 2-1/2", Fabric A 1-1/2", Fabric B 2-1/2", Fabric A 1-1/2", Fabric B, 2-1/2", Fabric A 6-1/2".

Step 3 – Middle Row

6. Sew the following pieces together at the 16-1/2" edge from left to right as follows to measure 50-1/2" x 16-1/2" – Label "Middle Row" and set aside for use later.
 - a. Fabric D 24-1/2", Fabric B 2-1/2", Fabric C 1-1/2", Fabric B 2-1/2", Fabric C 1-1/2", Fabric B 2-1/2", Fabric C 1-1/2", Fabric B 2-1/2", Fabric C 1-1/2", Fabric B 2-1/2", Fabric C 1-1/2", Fabric B, 2-1/2", Fabric D 6-1/2".
7. Sew the Middle Row to the bottom of the Top Row at the 50-1/2" edge to measure 50-1/2" x 44-1/2" – Label "Middle Row" and set aside for use later.

Step 4 – Bottom Row

8. Sew the following pieces together at the 12-1/2" edge from left to right as follows to measure 50-1/2" x 12-1/2" – Label "Top Row" and set aside for use later.
 - a. Fabric A 24-1/2", Fabric B 2-1/2", Fabric A 1-1/2", Fabric B 2-1/2", Fabric A 1-1/2", Fabric B 2-1/2", Fabric A 1-1/2", Fabric B 2-1/2", Fabric A 1-1/2", Fabric B 2-1/2", Fabric A 1-1/2", Fabric B, 2-1/2", Fabric A 6-1/2".
9. Sew the Bottom Row to the bottom of the Middle Row to finish the CENTER of the quilt at 50-1/2" x 56-1/2".

Step 5 – Adding the Borders

10. Inner Border – Sew (1) Fabric C 1-1/2" x 56-1/2" rectangle to the left and right sides, then sew (1) Fabric C 52-1/2" x 1-1/2" rectangle to the top and bottom to finish the Inner Border at 52-1/2" x 58-1/2".
11. Outer Border – Sew (1) Fabric D 4-3/4" x 58-1/2" rectangle to the left and right sides, then sew (1) Fabric D 61" x 4-3/4" rectangle to the top and bottom to finish the quilt top at 61" x 67".

Step 6 – Finishing the Quilt

12. Layer the backing, batting, and quilt top and quilt as desired.
13. Using Fabric C 2-1/2" strips sew on the binding to finish the quilt.