

Blossom Vine

By Danielle Murray

Table Set



Skill Level: Advanced Beginner

A Free Project Sheet From



facebook

Finished Runner Size: 68" x 26"

Finished Place Mat Size: 26" x 18"

49 West 37th Street, 14th floor, New York, NY 10018

Toll Free: 800-294-9495

fax: 212-679-4578

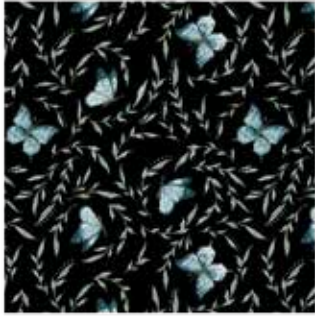
www.blankquilting.com

BLOSSOM VINE

Table Set

Finished Runner Size: 68" x 26"
Finished Place Mat Size: 26" x 18"

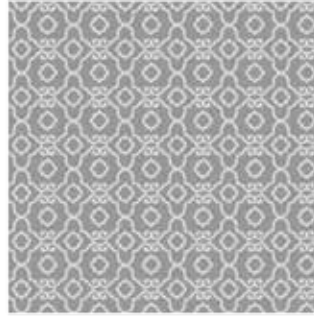
Fabrics in the Blossom Vine Collection



Little Leaves with Butterflies
Black - 8282-99



Little Leaves with Butterflies
Lt. Blue - 8282-11



Geometric - Grey
8281-90



Geometric - Blue
8281-70



Geometric - Green
8281-66



Magnolia Buds - Grey
8280-90



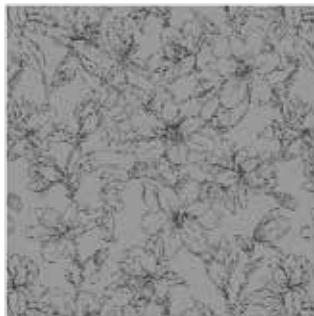
Magnolia Buds - Lt. Blue
8280-11



Fern - Black
8279-99



Fern - Grey
8279-01



Magnolia Sketch - Grey
8278-95



Magnolia Sketch - Lt. Grey
8278-90



Small Magnolia - Black
8277-99



Small Magnolia - Green
8277-60



Stripe - Grey
8276-90



Large Magnolia - Black
8275-99



Large Magnolia - Grey
8275-90

Runner Materials

1 ½ yards	Large Magnolia - Black (A)	8275-99
⅔ yard	Geometric - Blue (B)	8281-70*
½ yard	Magnolia Buds - Grey (C)	8280-90
⅓ yard	Magnolia Sketch - Grey (D)	8278-95
⅞ yard	Little Leaves with Butterflies - Lt. Blue (E)	8282-11
⅝ yard	Small Magnolia - Black (F)	8277-99
2 ¼ yards	Little Leaves with Butterflies - Black (Backing)	8282-99

*Includes binding

Runner Cutting Instructions

Please note: All strips are cut across the width of fabric (WOF) from selvage to selvage unless otherwise noted.

From the Large Magnolia - Black (A), cut:

- (1) 8 ½" x 50 ½" LOF strip.

From the Geometric - Blue (B), cut:

- (1) 1 ½" x WOF strip. Sub-cut strip into (2) 1 ½" x 8 ½" strips.
- (3) 1 ½" x WOF strips. Sew the strips together end to end with diagonal seams and cut (2) 1 ½" x 52 ½" strips.
- (5) 2 ½" x WOF strips for the binding.

From the Magnolia Buds - Grey (C), cut:

- (1) 3 ½" x WOF strip. Sub-cut strip into (2) 3 ½" x 10 ½" strips.
- (3) 3 ½" x WOF strips. Sew the strips together end to end with diagonal seams and cut (2) 3 ½" x 58 ½" strips.

From the Magnolia Sketch - Grey (D), cut:

- (1) 1 ½" x WOF strip. Sub-cut strip into (2) 1 ½" x 16 ½" strips.
- (4) 1 ½" x WOF strips. Sew the strips together end to end with diagonal seams and cut (2) 1 ½" x 60 ½" strips.

From the Little Leaves with Butterflies - Lt. Blue (E), cut:

- (1) 4 ½" x WOF strip. Sub-cut strip into (4) 4 ½" squares.
- (6) 3 ½" x WOF strips. Sub-cut strips into (52) 3 ½" x 4 ½" strips.

From the Small Magnolia - Black (F), cut:

- (5) 3 ½" x WOF strips. Sub-cut strips into (56) 3 ½" squares.

From the Little Leaves with Butterflies - Black (Backing), cut:

- (1) 76" x 34" strip for the back.

Runner Sewing Instructions

1. Sew (1) 1 ½" x 8 ½" Fabric B strip to each side of the 8 ½" x 50 ½" Fabric A strip. Sew (1) 1 ½" x 52 ½" Fabric B strip to the top and to the bottom of the Fabric A strip to make (1) A block (Fig. 1).
2. Sew (1) 3 ½" x 10 ½" Fabric C strip to each side of the A block. Sew (1) 3 ½" x 58 ½" Fabric C strip to the top and to the bottom of the A block (Fig. 1).
3. Sew (1) 1 ½" x 16 ½" Fabric D strip to each side of the A block. Sew (1) 1 ½" x 60 ½" Fabric D strip to the top and to the bottom of the A block to make the Center Block (Fig 1).

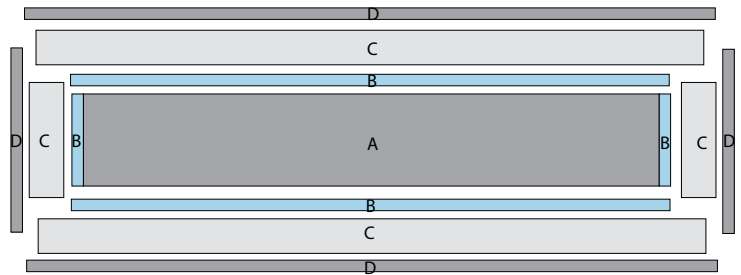


Fig. 1

4. Place (1) 3 ½" Fabric F square on the top left corner of (1) 4 ½" Fabric E square, right sides together (Fig. 2). Sew across the diagonal of the smaller square from the upper right corner to the lower left corner (Fig. 2). Flip open the triangle formed and press (Fig. 2). Trim away the excess fabric from behind the triangle ¼" away from the sewn seam to make (1) Corner Block (Fig. 2). Repeat to make (4) Corner Blocks total.

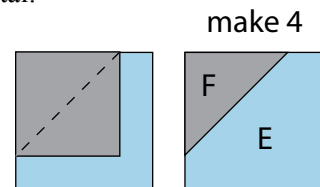


Fig. 2

5. Place (1) 3 ½" Fabric F square on top of (1) 3 ½" x 4 ½" Fabric E strip, with the tops aligned and right sides together. Sew across the diagonal of the Fabric F square from the upper left corner to the lower right corner. Flip open the triangle formed and press. Trim away the excess fabric from behind the triangle ¼" away from the sewn seam to make (1) EF strip (Fig. 3). Repeat to make (26) EF strips total.

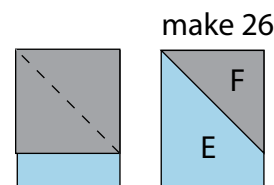
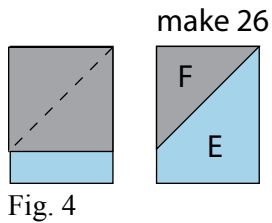


Fig. 3

6. Place (1) 3 1/2" Fabric F square on top of (1) 3 1/2" x 4 1/2" Fabric E strip, with the tops aligned and right sides together. Sew across the diagonal of the Fabric F square from the upper right corner to the lower left corner. Flip open the triangle formed and press. Trim away the excess fabric from behind the triangle 1/4" away from the sewn seam to make (1) FE strip (Fig. 4). Repeat to make (26) FE strips total.



7. Sew (1) EF strip and (1) FE strip together to make (1) side unit.

Runner Assembly

(Refer to the Figure 5 while assembling.)

8. Sew (3) side units together. Repeat to make a second strip. Sew (1) strip to each side of the Center Block.

9. Sew (10) side units together. Repeat to make a second strip. Sew (1) Corner Block to each end of each strip. Sew the resulting strips to the top and to the bottom of the Center Block to make the Runner top.

10. Layer and quilt as desired.

11. Sew the (5) 2 1/2" x WOF Fabric B strips together, end to end with 45-degree seams, to make the binding. Fold this long strip in half lengthwise with wrong sides together and press.

12. Bind as desired.

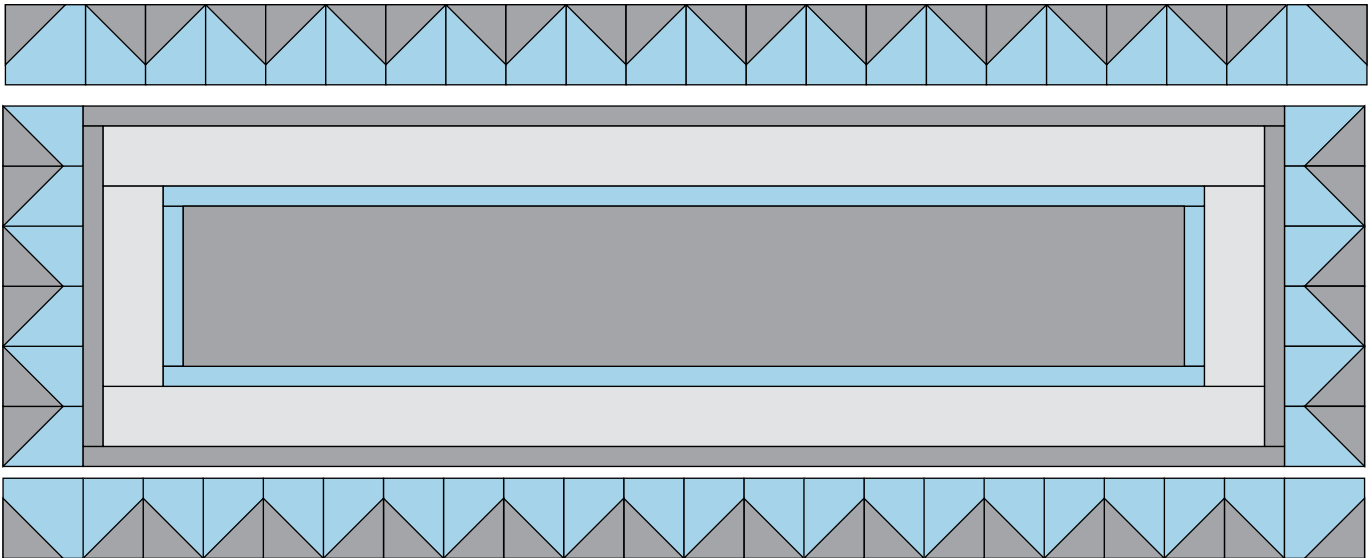


Fig. 5

Place Mat Materials

1/3 yard	Large Magnolia - Black (A)	8275-99
1 yard	Geometric - Blue (B)	8281-70*
3/4 yard	Magnolia Buds - Grey (C)	8280-90
1/2 yard	Magnolia Sketch - Grey (D)	8278-95
1/2 yard	Small Magnolia - Black (E)	8277-99
3/4 yard	Little Leaves with Butterflies - Lt. Blue (F)	8282-11
2 1/2 yards	Little Leaves with Butterflies - Black (Backing)	8282-99

*Includes binding

Place Mat Cutting Instructions

Please note: All strips are cut across the width of fabric (WOF) from selvage to selvage unless otherwise noted.

From the Large Magnolia - Black (A), cut:

- (1) 8 1/2" x WOF strip. Sub-cut strip into (4) 8 1/2" squares.

From the Geometric - Blue (B), cut:

- (2) 1 1/2" x WOF strips. Sub-cut strips into (8) 1 1/2" x 8 1/2" strips.
- (2) 1 1/2" x WOF strips. Sub-cut strips into (8) 1 1/2" x 10 1/2" strips.
- (10) 2 1/2" x WOF strips for the binding.

From the Magnolia Buds - Grey (C), cut:

- (2) 3 1/2" x WOF strips. Sub-cut strips into (8) 3 1/2" x 10 1/2" strips.
- (4) 3 1/2" x WOF strips. Sub-cut strips into (8) 3 1/2" x 16 1/2" strips.

From the Magnolia Sketch - Grey (D), cut:

- (4) 1 1/2" x WOF strips. Sub-cut strips into (8) 1 1/2" x 16 1/2" strips.
- (4) 1 1/2" x WOF strips. Sub-cut strips into (8) 1 1/2" x 18 1/2" strips.

From the Small Magnolia - Black (E), cut:

- (4) 3 1/2" x WOF strips. Sub-cut strips into (48) 3 1/2" squares.

From the Little Leaves with Butterflies - Lt. Blue (F), cut:

- (6) 3 1/2" x WOF strips. Sub-cut strips into (48) 3 1/2" x 4 1/2" strips.

From the Little Leaves with Butterflies - Black (Backing), cut:

- (4) 22" x 30" strips for the backs.

Place Mat Sewing Instructions

13. Sew (1) 1 1/2" x 8 1/2" Fabric B strip to each side of (1) 8 1/2" Fabric A square. Sew (1) 1 1/2" x 10 1/2" Fabric B strip to the top and to the bottom of the Fabric A square to make (1) A block (Fig. 6). Repeat to make (4) A blocks total.

14. Sew (1) 3 1/2" x 10 1/2" Fabric C strip to each side of (1) A block. Sew (1) 3 1/2" x 16 1/2" Fabric C strip to the top and to the bottom of the A block to make (1) AC block (Fig. 6). Repeat to make (4) AC blocks.

15. Sew (1) 1 1/2" x 16 1/2" Fabric D strip to each side of (1) AC block. Sew (1) 1 1/2" x 18 1/2" Fabric D strip to the top and to the bottom of the AC block to make (1) Center Block (Fig. 6). Repeat to make (4) Center Blocks total.

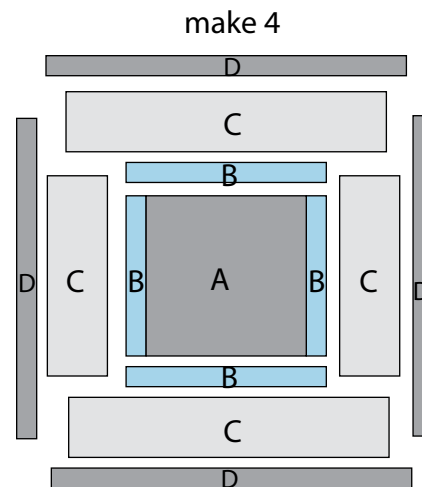


Fig. 6

16. Place (1) 3 1/2" Fabric E square on top of (1) 3 1/2" x 4 1/2" Fabric F strip, with the tops aligned and right sides together. Sew across the diagonal of the Fabric E square from the upper left corner to the lower right corner. Flip open the triangle formed and press. Trim away the excess fabric from behind the triangle 1/4" away from the sewn seam to make (1) FE strip (Fig. 7). Repeat to make (24) FE strips total.

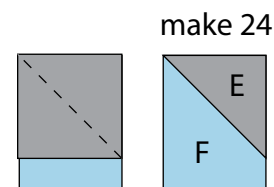


Fig. 7

17. Place (1) 3 1/2" Fabric E square on top of (1) 3 1/2" x 4 1/2" Fabric F strip, with the tops aligned and right sides together. Sew across the diagonal of the Fabric E square from the upper right corner to the lower left corner. Flip open the triangle formed and press. Trim away the excess fabric from behind the triangle 1/4" away from the sewn seam to make (1) EF strip (Fig. 8). Repeat to make (24) EF strips total.

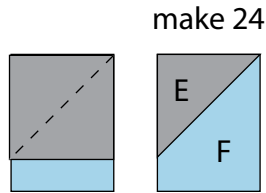


Fig. 8

18. Sew (3) FE strips and (3) EF strips together to make (1) side unit (Fig. 9). Repeat to make (8) side units total.

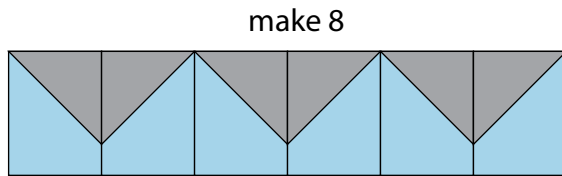


Fig. 9

Place Mat Assembly

(Refer to the Figure 10 while assembling.)

19. Sew (1) side unit to each side of (1) Center Block to make (1) Place Mat top. Repeat to make (4) Place Mat tops total.

20. Layer and quilt as desired.

21. Sew the (10) 2 1/2" x WOF Fabric B strips together, end to end with 45-degree seams, to make the binding. Fold this long strip in half lengthwise with wrong sides together and press. Divide the long strip into four equal lengths.

22. Bind as desired.

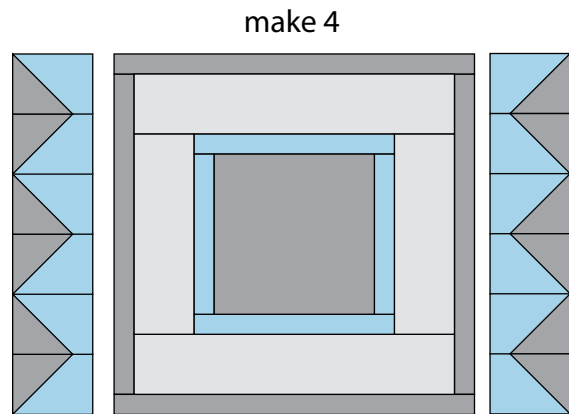


Fig. 10