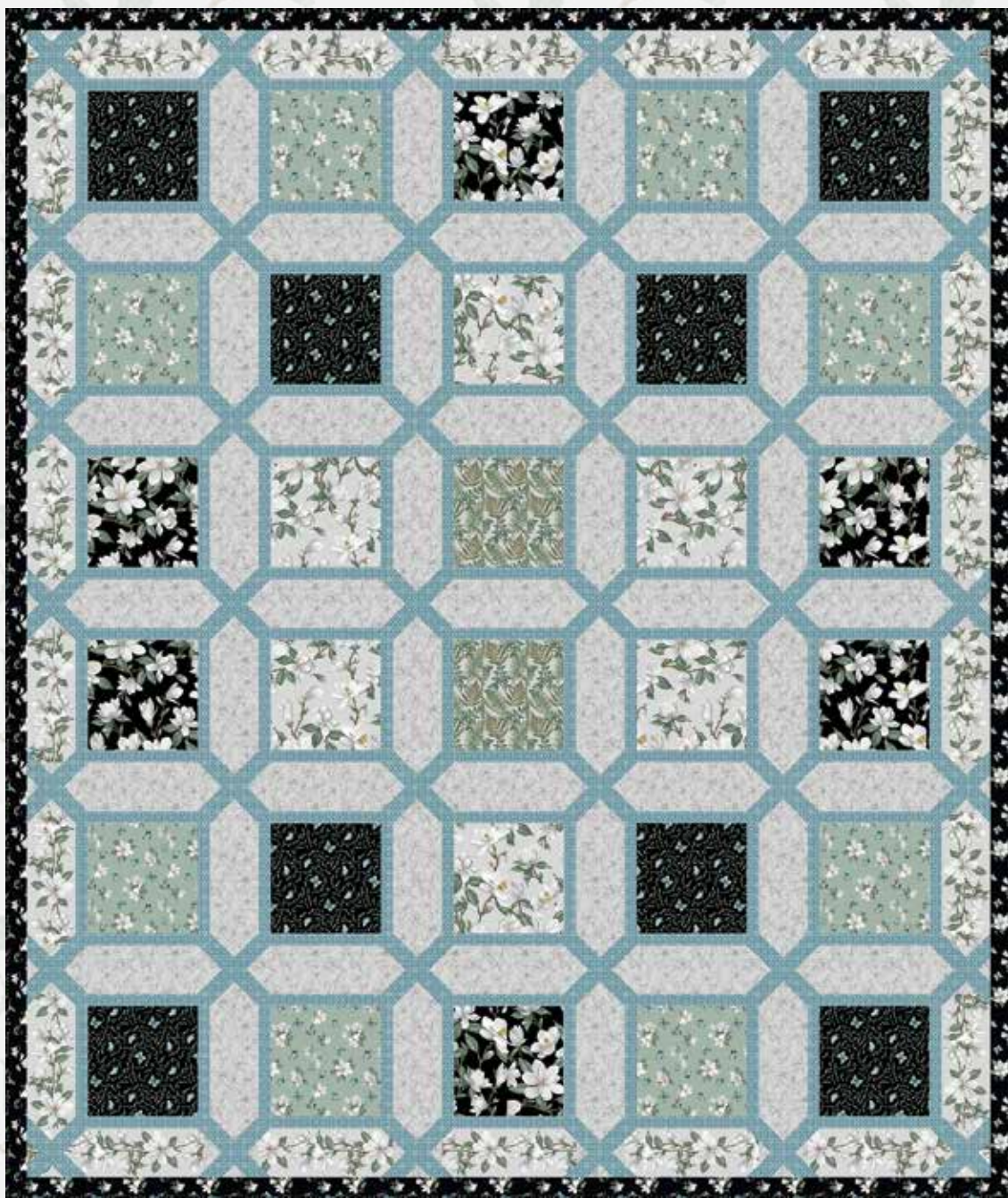


Blossom Vine

Quilt 1

By Danielle Murray



Skill Level: Intermediate

A Free Project Sheet From



facebook

Finished Quilt Size: 82" x 97"

49 West 37th Street, 14th floor, New York, NY 10018

Toll Free: 800-294-9495

fax: 212-679-4578

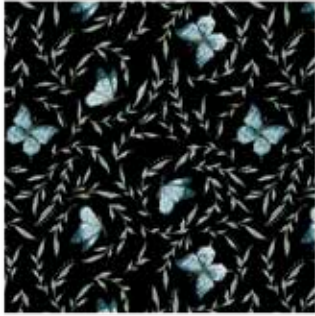
www.blankquilting.com

BLOSSOM VINE

Quilt 1

Finished Quilt Size: 82" x 97"

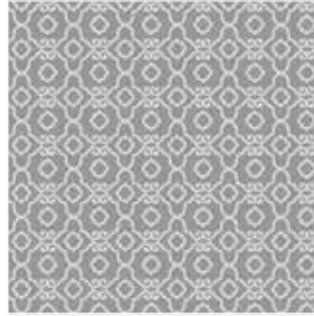
Fabrics in the Blossom Vine Collection



Little Leaves with Butterflies
Black - 8282-99



Little Leaves with Butterflies
Lt. Blue - 8282-11



Geometric - Grey
8281-90



Geometric - Blue
8281-70



Geometric - Green
8281-66



Magnolia Buds - Grey
8280-90



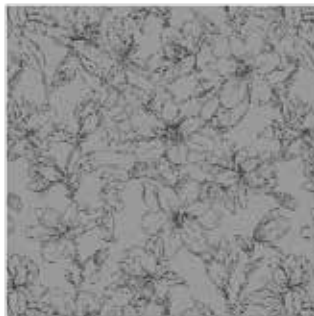
Magnolia Buds - Lt. Blue
8280-11



Fern - Black
8279-99



Fern - Grey
8279-01



Magnolia Sketch - Grey
8278-95



Magnolia Sketch - Lt. Grey
8278-90



Small Magnolia - Black
8277-99



Small Magnolia - Green
8277-60



Stripe - Grey
8276-90



Large Magnolia - Black
8275-99



Large Magnolia - Grey
8275-90

Materials

1 ¼ yards	Little Leaves with Butterflies - Black (A)	8282-99*
5/8 yard	Small Magnolia - Green (B)	8277-60
5/8 yard	Large Magnolia - Black (C)	8275-99
5/8 yard	Large Magnolia - Grey (D)	8275-90
3/8 yard	Fern - Grey (E)	8279-01
5/8 yard	Small Magnolia - Black (F)	8277-99
2 yards	Stripe - Grey (G)	8276-90
2 ½ yards	Magnolia Sketch - Lt. Grey (H)	8278-90
3 yards	Geometric - Blue (I)	8281-70
7 ½ yards	Magnolia Buds - Grey (Backing)	8280-90

*Includes binding

Cutting Instructions

Please note: All strips are cut across the width of fabric (WOF) from selvage to selvage edge unless otherwise noted.

From the Little Leaves with Butterflies - Black (A), cut:

- (2) 9 ½" x WOF strips. Sub-cut strips into (8) 9 ½" squares.
- (9) 2 ½" x WOF strips for the binding.

From the Small Magnolia - Green (B), cut:

- (2) 9 ½" x WOF strips. Sub-cut strips into (8) 9 ½" squares.

From the Large Magnolia - Black (C), cut:

- (2) 9 ½" x WOF strips. Sub-cut strips into (6) 9 ½" squares.

From the Large Magnolia - Grey (D), cut:

- (2) 9 ½" x WOF strips. Sub-cut strips into (6) 9 ½" squares.

From the Fern - Grey (E), cut:

- (1) 9 ½" x WOF strip. Sub-cut strip into (2) 9 ½" squares.

From the Small Magnolia - Black (F), cut:

- (5) 2" x WOF strips. Sew the strips together end to end with diagonal seams and cut (2) 2" x 94 ½" strips.
- (4) 2" x WOF strips. Sew the strips together end to end with diagonal seams and cut (2) 2" x 82 ½" strips.

From the Stripe - Grey (G), cut:

- (6) 11 ½" x WOF strips. Sub-cut strips into (22) 4 ½" x 11 ½" strips.

From the Magnolia Sketch - Lt. Grey (H), cut:

- (6) 11 ½" x WOF strips. Sub-cut strips into (49) 4 ½" x 11 ½" strips.
- (12) 1 ½" x WOF strips. Sub-cut strips into (336) 1 ½" squares.

From the Geometric - Blue (I), cut:

- (11) 1 ½" x WOF strips. Sub-cut strips into (284) 1 ½" squares.
- (11) 2 ½" x WOF strips. Sub-cut strips into (168) 2 ½" squares.
- (15) 1 ½" x WOF strips. Sub-cut strips into (60) 1 ½" x 9 ½" strips.
- (20) 1 ½" x WOF strips. Sub-cut strips into (60) 1 ½" x 11 ½" strips.

From the Magnolia Buds - Grey (Backing), cut:

- (3) 90" x WOF strips for the backing. Sew the strips together and trim to make the 90" x 105" back.

BLOSSOM VINE

Quilt 1

Page 2

Sewing Instructions

1. Sew (1) $1\frac{1}{2}$ " x $9\frac{1}{2}$ " Fabric I strip to each side of (1) $9\frac{1}{2}$ " Fabric A square. Sew (1) $1\frac{1}{2}$ " x $11\frac{1}{2}$ " Fabric I strip to the top and to the bottom of the Fabric A square to make (1) Block One (Fig. 1). Repeat to make (8) Block Ones total.

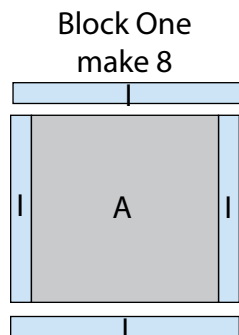


Fig. 1

2. Sew (1) $1\frac{1}{2}$ " x $9\frac{1}{2}$ " Fabric I strip to each side of (1) $9\frac{1}{2}$ " Fabric B square. Sew (1) $1\frac{1}{2}$ " x $11\frac{1}{2}$ " Fabric I strip to the top and to the bottom of the Fabric B square to make (1) Block Two (Fig. 2). Repeat to make (8) Block Twos total.

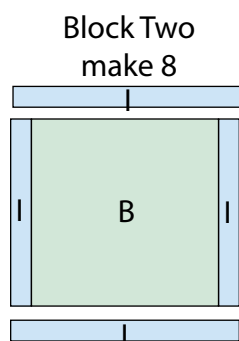


Fig. 2

3. Sew (1) $1\frac{1}{2}$ " x $9\frac{1}{2}$ " Fabric I strip to each side of (1) $9\frac{1}{2}$ " Fabric C square. Sew (1) $1\frac{1}{2}$ " x $11\frac{1}{2}$ " Fabric I strip to the top and to the bottom of the Fabric C square to make (1) Block Three (Fig. 3). Repeat to make (6) Block Threes total.

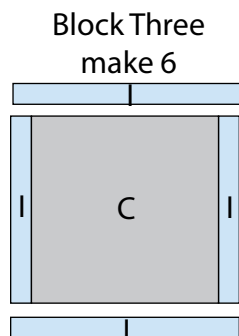


Fig. 3

4. Sew (1) $1\frac{1}{2}$ " x $9\frac{1}{2}$ " Fabric I strip to each side of (1) $9\frac{1}{2}$ " Fabric D square. Sew (1) $1\frac{1}{2}$ " x $11\frac{1}{2}$ " Fabric I strip to the top and to the bottom of the Fabric D square to make (1) Block Four (Fig. 4). Repeat to make (6) Block Fours total.

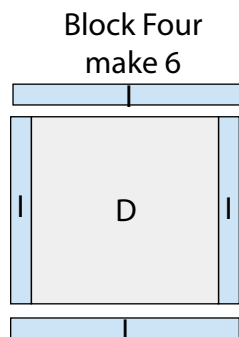


Fig. 4

5. Sew (1) $1\frac{1}{2}$ " x $9\frac{1}{2}$ " Fabric I strip to each side of (1) $9\frac{1}{2}$ " Fabric E square. Sew (1) $1\frac{1}{2}$ " x $11\frac{1}{2}$ " Fabric I strip to the top and to the bottom of the Fabric E square to make (1) Block Five (Fig. 5). Repeat to make (2) Block Fives total.

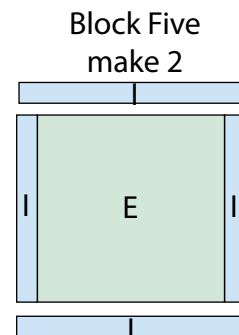


Fig. 5

6. Place (1) $1\frac{1}{2}$ " Fabric I square on the top left corner of (1) Fabric G $4\frac{1}{2}$ " x $11\frac{1}{2}$ " strip, right sides together (Fig. 6). Sew across the diagonal of the small square from the upper right corner to the lower left corner (Fig. 6). Flip open the triangle formed and press (Fig. 7). Trim away the excess fabric from behind the triangle $\frac{1}{4}$ " away from the sewn seam.



Fig. 6



Fig. 7

7. Follow Figure 8 for the seam direction to add a $1\frac{1}{2}$ " Fabric I square to each of the remaining corners of the Fabric G strip to make (1) G block (Fig. 9).

8. Repeat Steps 6-7 to make (22) G blocks total.



Fig. 8

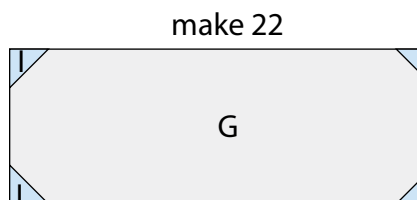


Fig. 9

9. Repeat Steps 6-7 using (49) 4 ½" x 11 ½" Fabric H strips and (196) 1 ½" Fabric I squares to make (49) H blocks (Fig. 10).

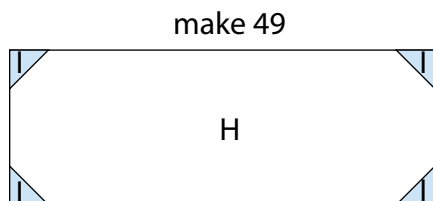


Fig. 10

10. Place (1) 1 ½" Fabric H square on the top left corner of (1) 2 ½" Fabric I square, right sides together (Fig. 11). Sew across the diagonal of the smaller square from the upper right corner to the lower left corner (Fig. 11). Flip open the triangle formed and press (Fig. 12). Trim away the excess fabric from behind the triangle ¼" away from the sewn seam.

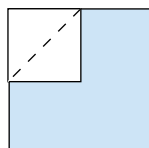


Fig. 11

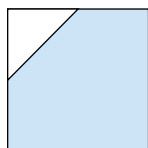


Fig. 12

11. Follow Figure 13 for the seam direction to add a 1 ½" Fabric H square to the lower right corner of the 2 ½" Fabric I square to make (1) I block (Fig. 14).

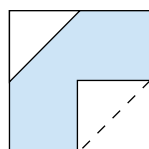


Fig. 13

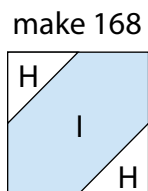


Fig. 14

12. Repeat Steps 10-11 to make (168) I Blocks total.

13. Sew (4) I blocks together as shown in Figure 15 to make (1) HI block. Repeat to make (42) HI blocks total.

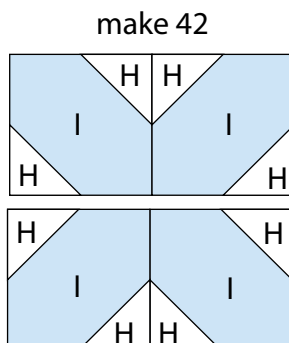


Fig. 15

14. Sew (6) HI blocks and (5) G blocks together, alternating them, to make the Top border. Repeat to make the Bottom border.

15. Sew (6) HI blocks and (5) H blocks together, alternating them, to make (1) sashing row. Repeat to make (5) sashing rows total.

Quilt Top Assembly

(Refer to the Quilt Layout while assembling.)

16. Sew (2) G blocks, (2) Block Ones, (4) H blocks, (2) Block Twos and (1) Block Three together to make Row One. Repeat to make Row Six.

17. Sew (2) G blocks, (2) Block Twos, (4) H blocks, (2) Block Ones and (1) Block Four together to make Row Two. Repeat to make Row Five.

18. Sew (2) G blocks, (2) Block Threes, (4) H blocks, (2) Block Fours and (1) Block Five together to make Row Three. Repeat to make Row Four.

19. Sew the (6) rows and (5) sashing rows together, alternating them, to make the quilt top.

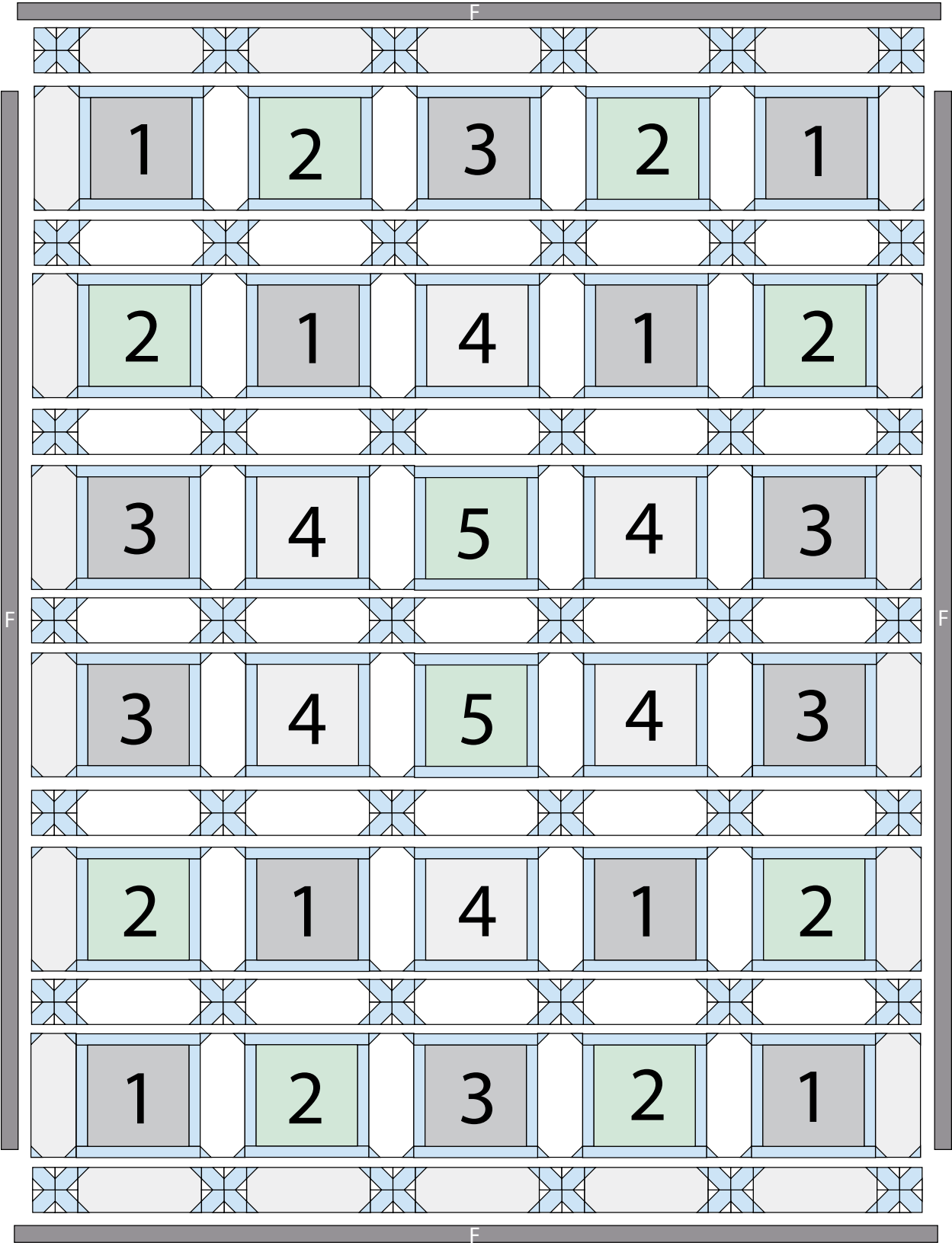
20. Sew the Top and Bottom borders onto the quilt top.

21. Sew (1) 2" x 94 ½" Fabric F strip to each side of the quilt top. Sew (1) 2" x 82 ½" Fabric F strip to the top and to the bottom of the quilt top.

22. Layer and quilt as desired.

23. Sew the (9) 2 ½" x WOF Fabric A strips together, end to end with 45-degree seams, to make the binding. Fold this long strip in half lengthwise with wrong sides together and press.

24. Bind as desired.



Quilt Layout