

# Scrappy Square

Quilt is 48" x 64".

## Supplies

### Blocks

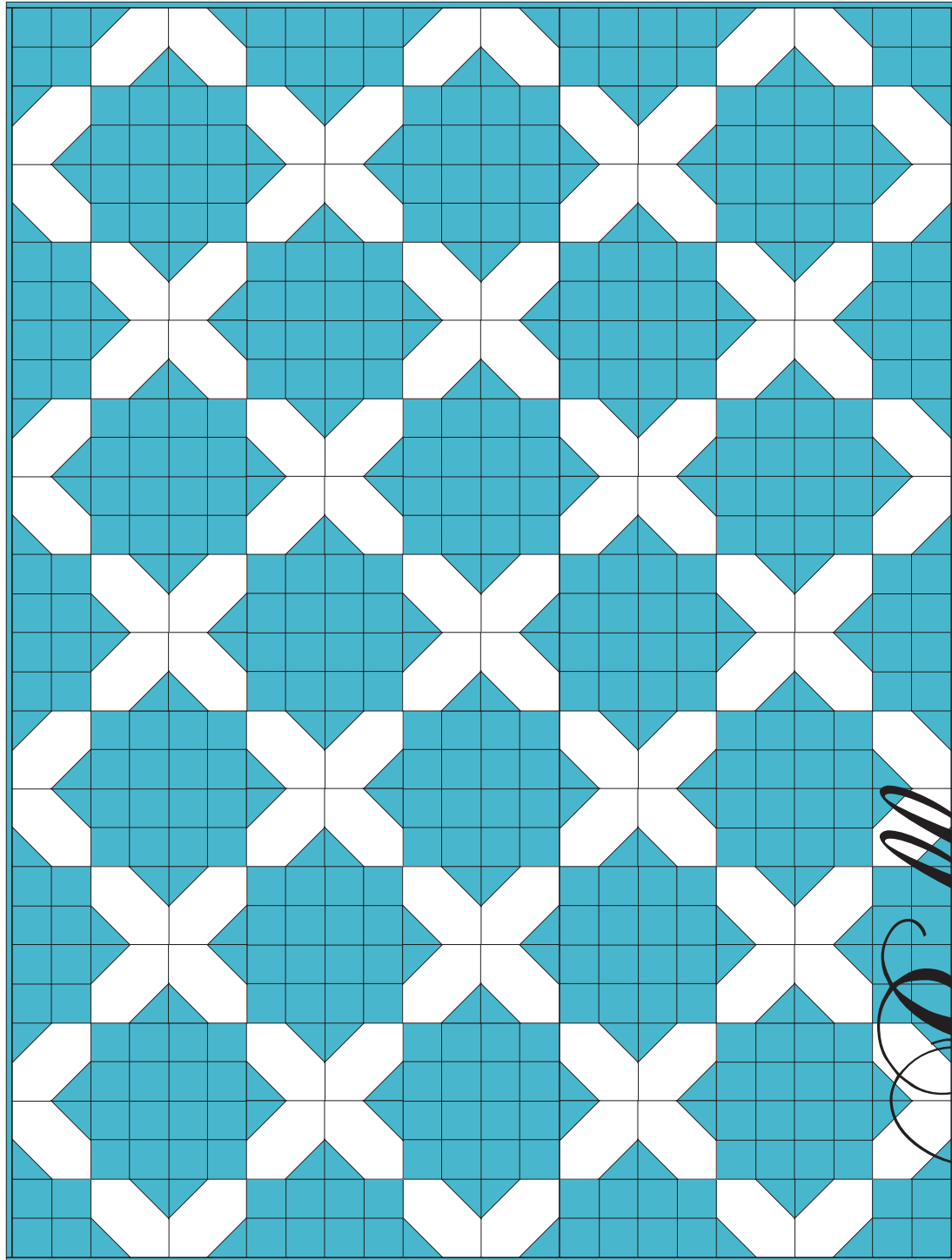
12 assorted Fat Quarters\*

**Background:** 1½ yards

**Binding:** ⅝ yard

**Backing:** 3⅞ yards  
(pieced horizontally)

\*Fat Quarter=18" x 22"



moda

MODAFABRICS.COM

BSPK1502 — SUGGESTED RETAIL \$6.00

moda  
**Bella**<sup>™</sup>  
**Solids**

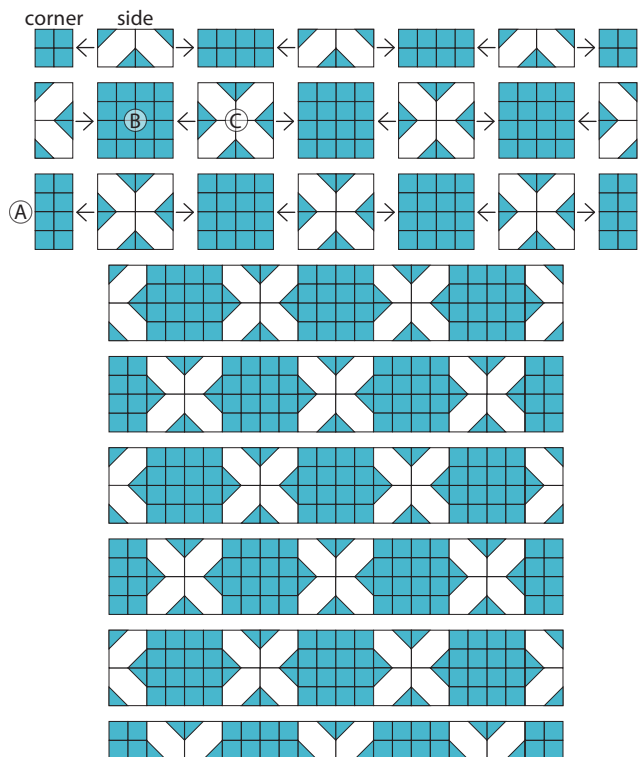
12 pack

*Which colors will you choose?*

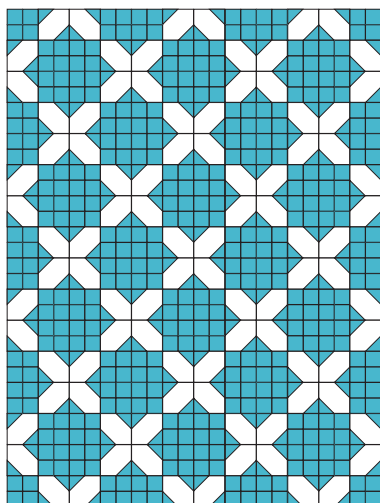
Scrappy Square

Quilt is 48" x 64".

2 Arrange and sew the A, B, C, side, and corner blocks together as shown to make 9 rows. Join the rows. Layer, quilt, and bind.



*moda*



# Scrappy Square

Quilt is 48" x 64".

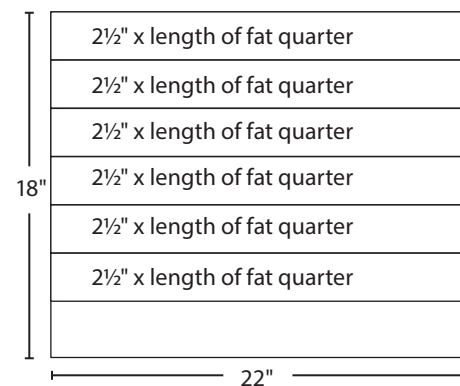
## Cutting

### Blocks

From EACH of the 12 Fat Quarters cut:

6-2½" x length of fat quarter strips

Cut the strips in half to make 12-2½" x 10" strips



You will have a total of 144-2½" x 10" strips.

Set aside 92-2½" x 10" strips.

From the remaining 52 strips, cut 208-2½" squares.

### Background

11-4½" x width of fabric strips

From the strips, cut 96-4½" squares

### Binding

7-2½" x width of fabric strips.

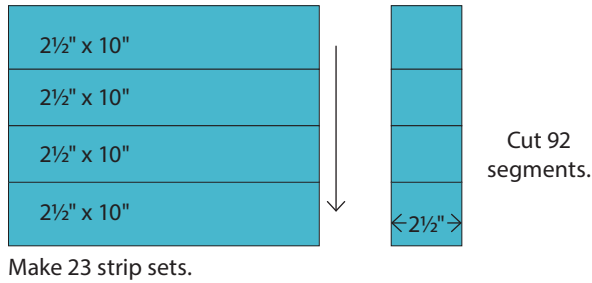
Sew the strips end-to-end to make the binding.

*moda*

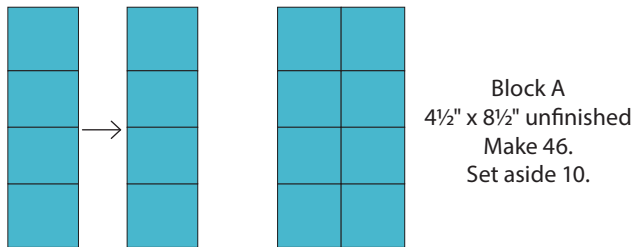
## Construction

Use  $\frac{1}{4}$ " seams. Press in the direction of the arrows in the diagrams.

- 1 (A) Join 4- $2\frac{1}{2}$ " x 10" assorted strips as shown. Make 23 strip sets. Press in one direction. From each strip set cut 4- $2\frac{1}{2}$ " wide segments. Cut 92- $2\frac{1}{2}$ " wide segments total.

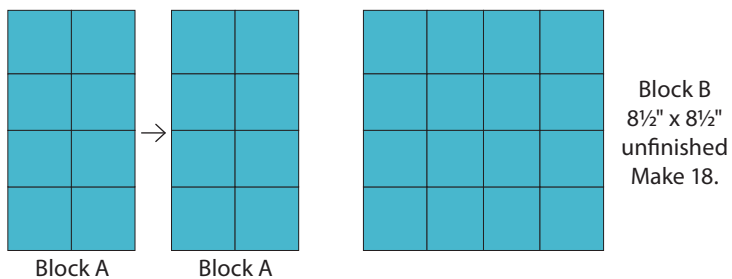


- (B) Join 2 segments as shown. Make 46 Block As. Set aside 10.

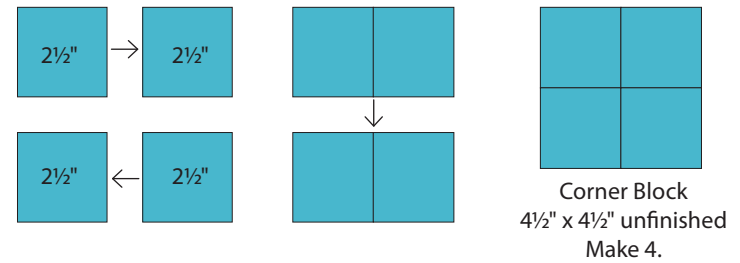


*moda*

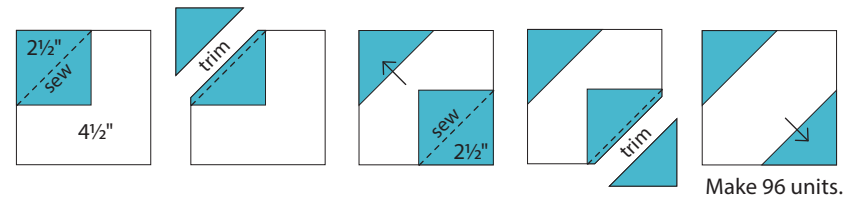
- (C) Join 2 Block As as shown. Make 18 Block Bs.



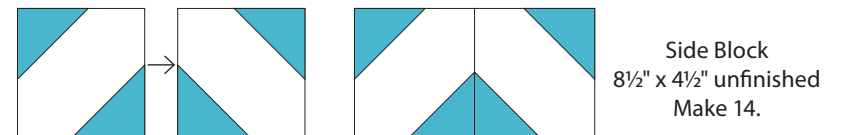
- (D) Arrange and sew 2 rows of 2- $2\frac{1}{2}$ " print blocks. Join the rows to make 1 corner block. Make 4 corner blocks.



- (E) Draw a diagonal line from corner to corner of on the wrong side of 192- $2\frac{1}{2}$ " print squares. Layer one marked square, right sides together, on a corner of a  $4\frac{1}{2}$ " background square as shown. Sew on the diagonal sew line. Trim  $\frac{1}{4}$ " from the sewn line. Press to form a triangle. Repeat on the opposite corner of the same square. Make 96 units.



- (F) Join 2 units as shown. Make 14 side blocks.



- (G) Join 4 units as shown. Make 17 block Cs.

