

# Welcome Wagon

## Patchwork Quilt

by Kim Diehl



Finished Quilt Size: 58½" x 58½"  
A Free Project Sheet from



Henry Glass & Co., Inc.



49 West 37th Street, New York, NY 10018  
tel: 212-686-5194 • fax: 212-532-3525  
Toll-free: 800-294-9495  
[www.henryglassfabrics.com](http://www.henryglassfabrics.com)

facebook



# Welcome Wagon Patchwork Quilt

Finished quilt size: 58½" x 58½" • Finished block size: 10" x 10"

## MATERIALS

*Yardages are based upon a 42" width of useable fabric after prewashing and removing selvages.*

1 yard of green stripe for inner border, outer border patchwork, and binding: 6562-66  
⅞ yard each of three neutral prints for blocks and quilt center sashing: 6561-44; 6563-44; 6568-44  
¾ yard of green stipple print for blocks and outer border patchwork: 6563-66  
⅓ yard of green rings and dots print for blocks and outer border patchwork: 6566-66  
21 fat quarters (18" x 21") of assorted prints for blocks and outer border patchwork: 6561-55, 77, 88; 6562-88, 99; 6563-33, 88; 6564-30, 77, 88; 6565-44, 77, 88; 6566-55, 99; 6567-30, 66, 88; 6568-11, 22, 40  
1½ yards of 108" fabric for backing (Kim suggests Spiced Pomegranate: 6631-85)  
65" x 65" square of batting  
Basic sewing and quilting supplies

## CUTTING

*Cut all pieces across the width of the fabric in the order given unless otherwise noted.*

**From the three neutral prints, cut a combined total of:**

64 rectangles, 3½" x 4½"  
32 squares, 2⅞" x 2⅞"; cut each square in half diagonally once to yield 2 triangles (combined total of 64)  
128 rectangles, 1½" x 2½"  
64 squares, 1½" x 1½"  
24 rectangles, 1½" x 10½"

**From the green rings and dots print, cut:**

16 squares, 4½" x 4½"  
Reserve the remainder of the print.

**From the green stipple print, cut:**

8 strips, 2½" x 42"; crosscut into 128 squares, 2½" x 2½"  
Reserve the remainder of the print.

**From the green stripe print, cut:**

5 strips, 2" x 42"  
6 binding strips, 2½" x 42"  
Reserve the remainder of the print.

**From each of the 21 fat quarters of assorted prints, cut:**

2 squares, 2⅞" x 2⅞"; cut each square in half diagonally once to yield 2 triangles (total of 4 triangles each print, combined total of 84)  
12 squares, 1½" x 1½"  
Choose one favorite print, and cut an additional 4 squares, 1½" x 1½"  
For ease in piecing the blocks, organize the pieces into patchwork sets consisting of 1 triangle and 4 matching print 1½" squares. Reserve the remainder of the prints.

**From the reserved remainder of all prints, excluding the neutral prints, cut a combined total of:**

129 squares, 1½" x 1½"  
36 squares, 2½" x 2½"  
20 rectangles, 1½" x 6½"  
72 rectangles, 2½" x 6½"

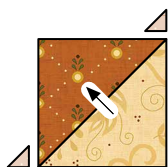
*Note: For added versatility when stitching the border patchwork, Kim suggests cutting a handful of extra pieces in each specified size.*

## PIECING THE BLOCK CORNER UNITS

*Sew all pieces with right sides together and a ¼" seam allowance unless otherwise noted.*

- 1 Select a set of patchwork pieces cut from one assorted print. Use a pencil and an acrylic ruler to draw a diagonal sewing line from corner to corner on the wrong side of each 1½" square.
- 2 Choosing the prints randomly, select one neutral triangle, two neutral 1½" x 2½" rectangles, and one neutral 1½" square.

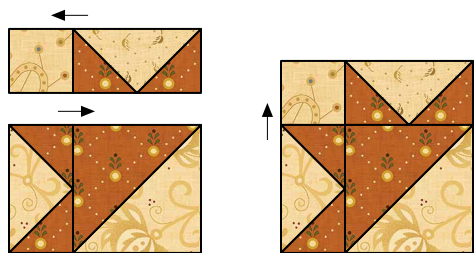
- 3 Join an assorted print and neutral print triangle along the long diagonal edges. Press the seam allowances toward the assorted print. Trim away the dog-ear points. The pieced half-square-triangle unit should measure  $2\frac{1}{2}$ " square, including the seam allowances.



- 4 Layer a prepared assorted print  $1\frac{1}{2}$ " square onto one end of a neutral  $1\frac{1}{2}$ " x  $2\frac{1}{2}$ " rectangle. Stitch the pair along the drawn line. Fold the resulting inner triangle open, aligning the edges with the corner of the neutral rectangle; press. Trim away the layers beneath the top triangle, leaving a  $\frac{1}{4}$ " seam allowance. In the same manner, layer, stitch, press, and trim a second matching print prepared assorted print  $1\frac{1}{2}$ " square onto the remaining end of the neutral rectangle to form a mirror-image point. Repeat to make two pieced Flying Geese units measuring  $1\frac{1}{2}$ " x  $2\frac{1}{2}$ ", including the seam allowances.



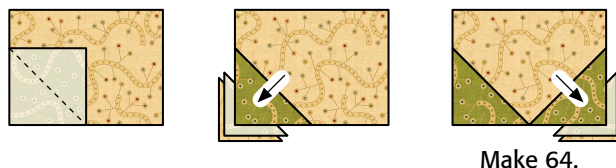
- 5 Lay out the pieced half-square-triangle unit, two pieced Flying Geese units, and the neutral  $1\frac{1}{2}$ " square as shown. Join the pieces in each horizontal row. Press the seam allowances as indicated. Join the rows. Press the seam allowances as shown.



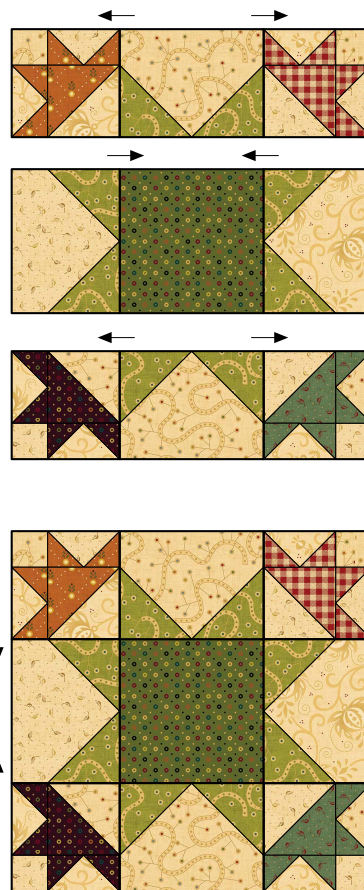
- 6 Repeat steps 1 through 5 to make a total of 64 pieced block corner units measuring  $3\frac{1}{2}$ " square, including the seam allowances. Please note that you'll have 20 unused assorted print triangles.

## PIECING THE STAR VARIATION BLOCKS

- 1 Use a pencil and an acrylic ruler to draw a diagonal sewing line on the wrong side of each green stipple print  $2\frac{1}{2}$ " square. Referring to step 4 of "Piecing the Block Corner Units" at left, use the assorted neutral print  $3\frac{1}{2}$ " rectangles and the prepared green stipple squares to make a total of 64 pieced Flying Geese variation units measuring  $3\frac{1}{2}$ " x  $4\frac{1}{2}$ ", including the seam allowances.



- 2 Lay out four pieced block corner units, four pieced Flying Geese variation units (using units stitched from a variety of neutral prints), and one green rings and dots  $4\frac{1}{2}$ " square as shown. Join the pieces in each horizontal row. Press the seam allowances as indicated. Join the rows. Press the seam allowances as shown. Repeat for a total of 16 pieced Star Variation blocks measuring  $10\frac{1}{2}$ " square, including the seam allowances.



## PIECING THE QUILT CENTER

- 1 Referring to the pictured quilt, lay out four pieced Star Variation blocks and three assorted neutral print  $1\frac{1}{2}$ " x  $10\frac{1}{2}$ " rectangles in alternating positions. Join the pieces. Press the seam allowances toward the neutral rectangles. Repeat for a total of four pieced block rows measuring  $10\frac{1}{2}$ " x  $43\frac{1}{2}$ ", including the seam allowances.
- 2 Lay out four assorted neutral print  $1\frac{1}{2}$ " x  $10\frac{1}{2}$ " rectangles, and three assorted print  $1\frac{1}{2}$ " squares in alternating positions. Join the pieces. Press the seam allowances toward the neutral rectangles. Repeat for a total of three pieced sashing rows measuring  $1\frac{1}{2}$ " x  $43\frac{1}{2}$ ", including the seam allowances.
- 3 Using the pictured quilt as a guide, lay out the pieced block rows and sashing rows in alternating positions. Join the rows. Press the seam allowances toward the sashing rows. The pieced quilt center should now measure  $43\frac{1}{2}$ " square, including the seam allowances.

## PIECING AND ADDING THE INNER BORDER

- 1 Join the green stripe 2" x 42" strips together end to end. Press the seam allowances open. From this pieced strip, cut two lengths, 2" x  $43\frac{1}{2}$ ", and two lengths, 2" x  $46\frac{1}{2}$ ".
- 2 Join a green stripe 2" x  $43\frac{1}{2}$ " length to the right and left sides of the quilt center. Press the seam allowances toward the green stripe. Join the green stripe 2" x  $46\frac{1}{2}$ " lengths to the remaining sides of the quilt center. Press the seam allowances toward the green stripe.

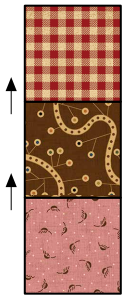
## PIECING AND ADDING THE OUTER BORDER

- 1 Choosing the prints randomly, join six assorted print  $1\frac{1}{2}$ " squares together end to end. Press the seam allowances in one direction. Repeat for a total of 20 pieced Six Patch units measuring  $1\frac{1}{2}$ " x  $6\frac{1}{2}$ ", including the seam allowances.



Make 20.

- 2 Choosing the prints randomly, join three assorted print  $2\frac{1}{2}$ " squares together end to end. Press the seam allowances in one direction. Repeat for a total of 12 pieced Three Patch units measuring  $2\frac{1}{2}$ " x  $6\frac{1}{2}$ ", including the seam allowances.

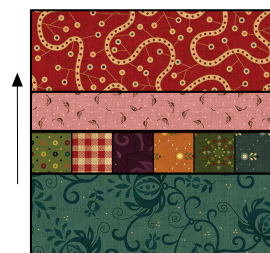


Make 12.

- 3 Select four pieced Six Patch units, three pieced Three Patch units, four assorted print  $1\frac{1}{2}$ " x  $6\frac{1}{2}$ " rectangles. Referring to the illustration (or, create your own pattern!) join the pieces to form the left outer border row. Press the seam allowances in one direction. Repeat to make the right outer border row. Join these pieced rows to the right and left sides of the quilt top. Press the seam allowances toward the quilt center.



- 4 Select two assorted print  $2\frac{1}{2}$ " x  $6\frac{1}{2}$ " rectangles, one assorted print  $1\frac{1}{2}$ " x  $6\frac{1}{2}$ " rectangle, and one pieced Six Patch unit. Join the pieces. Press the seam allowances in one direction. Repeat for a total of two pieced end units measuring  $6\frac{1}{2}$ " square, including the seam allowances.



Make 2.



- 5 Select five pieced Six Patch units, three pieced Three Patch units, five assorted print  $1\frac{1}{2}$ " x  $6\frac{1}{2}$ " rectangles, 18 assorted print  $2\frac{1}{2}$ " x  $6\frac{1}{2}$ " rectangles, and one pieced end unit from step 4. Using the illustration as a guide, join the pieces to form the top outer border row. Press the seam allowances to the right. Repeat to make the bottom outer border row. Press the seam allowances to the left. Join these pieced rows to the remaining sides of the quilt top. Press the seam allowances toward the quilt center. The pieced quilt top should now measure  $58\frac{1}{2}$ " square, including the seam allowances.

## COMPLETING THE QUILT

Layer the quilt top, batting, and backing. Quilt the layers. Join the green stripe binding strips into one length, and use it to bind the quilt.



Every effort has been made to ensure that all projects are error free. All the information is presented in good faith, however no warranty can be given nor results guaranteed as we have no control over the execution of instructions. Therefore, we assume no responsibility for the use of this information or damages that may occur as a result. When errors are brought to our attention, we make every effort to correct and post a revision as soon as possible. Please make sure to check [www.henryglassfabrics.com](http://www.henryglassfabrics.com) for pattern updates prior to starting the project. We also recommend that you test the project prior to cutting for kits. Finally, all free projects are intended to remain free to you and are not for resale.

# Welcome Wagon



## Fabrics in the Collection



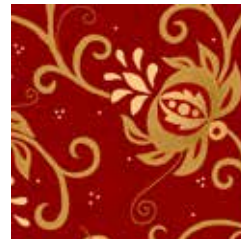
6561-44



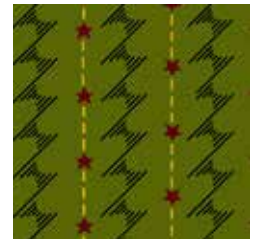
6561-55



6561-77



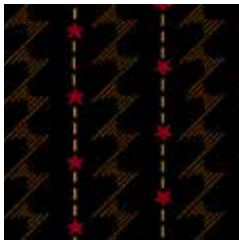
6561-88



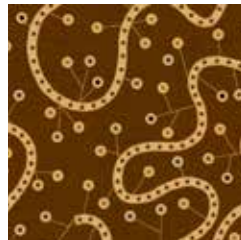
6562-66



6562-88



6562-99



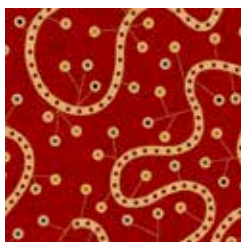
6563-33



6563-44



6563-66



6563-88



6564-30



6564-77



6564-88



6565-44



6565-77



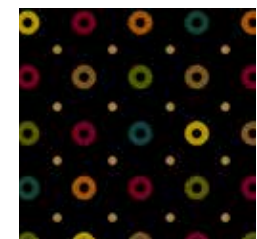
6565-88



6566-55



6566-66



6566-99



6567-30



6567-66



6567-88



6568-11



6568-22



6568-40



6568-44