

Welcome Wagon

Fat and Sassy Lap Quilt

by **Kim Diehl**



Finished Quilt Size: 56½" x 56½"
A Free Project Sheet from

 **Henry Glass & Co., Inc.**



49 West 37th Street, New York, NY 10018
tel: 212-686-5194 • fax: 212-532-3525
Toll-free: 800-294-9495
www.henryglassfabrics.com

[facebook](#)

Welcome Wagon Fat and Sassy Lap Quilt

Finished quilt size: 56½" x 56½" • Finished block size: 7" x 7"

MATERIALS

Yardages are based upon a 42" width of useable fabric after prewashing and removing selvages.

- 1 fat quarter (18" x 21") *each* of three neutral prints for patchwork: 6561-44; 6563-44; 6568-44
- 1 fat quarter *each* of 24 assorted prints for patchwork and binding: 6561-55, 77, 88; 6562-66, 88, 99; 6563-33, 66, 88; 6564-30, 77, 88; 6565-44, 77, 88; 6566-55, 66, 99; 6567-30, 66, 88; 6568-11, 22, 40
- 3½ yards of print of your choice for backing (Kim suggests neutral print 6563-44)
- 63" x 63" square of batting
- Basic sewing and quilting supplies

PROJECT NOTES

To simplify the cutting and piecing steps for this project, Kim divided the prints into two groups as noted below. For greater ease in sorting the prints, please refer to the swatch page.

LIGHT PRINTS

6561-44, 88; 6563-44, 66; 6564-30; 6565-44, 77, 88; 6567-30; 6568-11, 22, 40, 44

DARK PRINTS

6561-55, 77; 6562-66, 88, 99; 6563-33, 88; 6564-77, 88; 6566-55, 66, 99; 6567-66, 88

CUTTING

Cut all pieces across the width of the fabric in the order given unless otherwise noted. For ease in piecing the blocks, keep the pieces organized into light and dark groups. Kim suggests cutting a handful of extra pieces from each group of prints for added choices as the blocks are pieced.

From the light prints, cut a combined total of:
32 squares, 7⅞" x 7⅞"; cut each square in half diagonally *once* to yield two triangles (combined total of 64)

Reserve the remainder of the light prints.

From the dark prints, cut a combined total of:
32 squares, 7⅞" x 7⅞"; cut each square in half diagonally *once* to yield two triangles (combined total of 64)

Reserve the remainder of the dark prints.

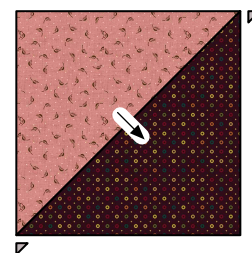
From the reserved remainder of all prints, excluding the neutrals, cut:

Enough 2½"-wide rectangles in random lengths to make a 236" length of binding when joined together end to end.

PIECING THE HALF-SQUARE-TRIANGLE BLOCKS

Sew all pieces with right sides together and a ¼" seam allowance unless otherwise noted.

Select one triangle from the light group and one triangle from the dark group. Join the pieces along the long diagonal edges. Press the seam allowances toward the dark print. Trim away the dog-ear points. Repeat for a total of 64 pieced Half-Square-Triangle blocks measuring 7½" square, including the seam allowances.



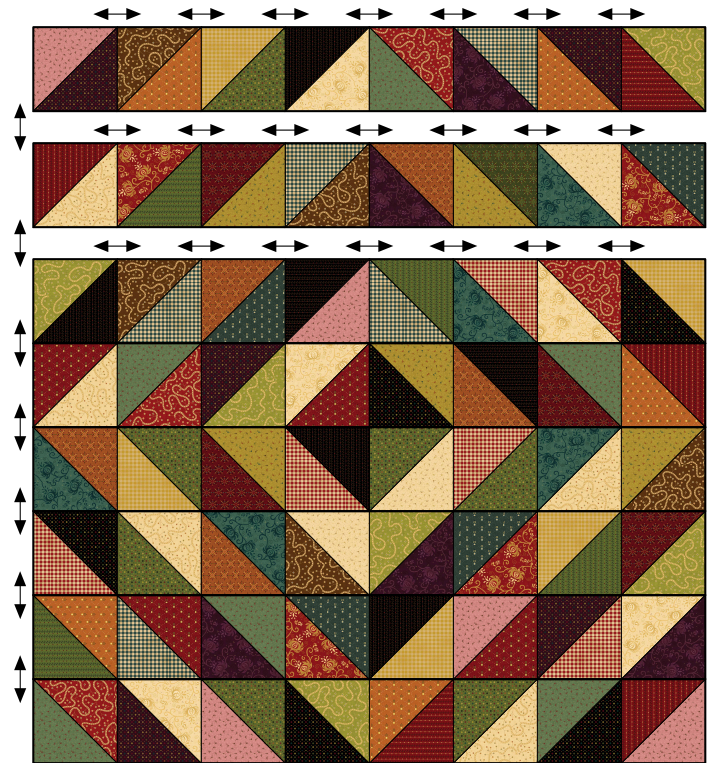
Make 64.

PIECING THE QUILT TOP

Referring to the illustration, lay out the pieced Half-Square-Triangle blocks in eight rows of eight blocks. Join the blocks. Press the seam allowances open. Join the rows. Press the seam allowances open. The pieced quilt top should measure 56 ½" square, including the seam allowances.

COMPLETING THE QUILT

Layer the quilt top, batting, and backing. Quilt the layers. Join the 2 1/2"-wide random lengths of assorted prints to make a pieced 236" strip, and use it to bind the quilt.



Every effort has been made to ensure that all projects are error free. All the information is presented in good faith, however no warranty can be given nor results guaranteed as we have no control over the execution of instructions. Therefore, we assume no responsibility for the use of this information or damages that may occur as a result. When errors are brought to our attention, we make every effort to correct and post a revision as soon as possible. Please make sure to check www.henryglassfabrics.com for pattern updates prior to starting the project. We also recommend that you test the project prior to cutting for kits. Finally, all free projects are intended to remain free to you and are not for resale.

Welcome Wagon

Fabrics in the Collection



6561-44



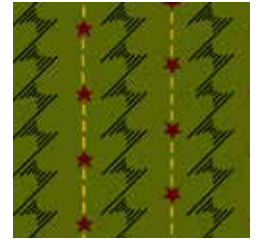
6561-55



6561-77



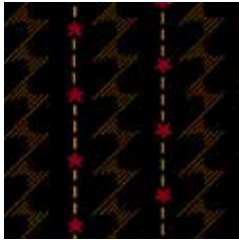
6561-88



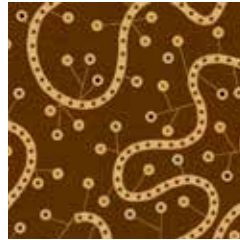
6562-66



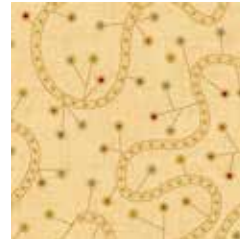
6562-88



6562-99



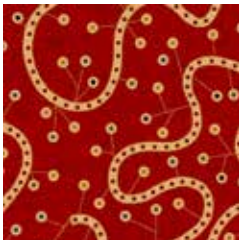
6563-33



6563-44



6563-66



6563-88



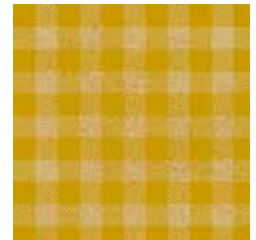
6564-30



6564-77



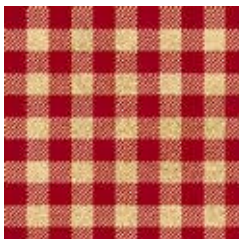
6564-88



6565-44



6565-77



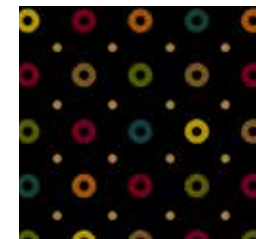
6565-88



6566-55



6566-66



6566-99



6567-30



6567-66



6567-88



6568-11



6568-22



6568-40



6568-44