



Andrea Turk for
Cinnamon Joe Studio

Saybrook Island Pillow (D-028A)



Fabric requirements



Fabric A: 214-0001 White
1/3 yard



Fabric B: 9140601 #3
1/3 yard



Fabric C: 9140605 #1
1/8 yard



Fabric D: 9140604 #1
1/8 yard



Fabric E: 9140603 #1
1/8 yard



Fabric F: 9140602 #3
1/8 yard



Fabric G: 9140602 #2
1/8 yard



Fabric H: 9140603 #3
1/8 yard

Exclusive design by Stephanie Palmer of Late Night Quilter for Camelot Fabrics
Fabric collection: Mama & Me by Andrea Turk of Cinnamon Joe Studio for Camelot Fabrics
The direction of the fabrics in the digital imagery may not be accurate to the final product.



Blog, Facebook, Twitter @CamelotFabrics
Pinterest, YouTube & Instagram @Camelot_Fabrics
camelotfabrics.com • camelotfabricsblog.com
Toll-Free: 1-800-361-4120 • 514-382-2400
info@camelotfabrics.com • www.camelotfabrics.com



Suggested Backing
9140604 #3
2/3 yard

Finished Size: 20" x 20"

OTHER TOOLS & SUPPLIES

- 2/3 yard of quilt batting (58" wide)
- 20" square pillow form
- (1) letter-sized sheet of clear plastic or acetate for templates
- sewing machine & coordinating thread
- rotary cutter & mat
- scissors & fabric shears
- straight edge ruler & measuring tape
- straight pins
- fabric marker or pencil

NOTES

- For best results, read through all instructions before beginning.
- WOF = width of fabric (42")
- RST = right sides together
- Unless otherwise directed, sew all seams with an accurate 1/4" seam allowance, and press seams open as you go.
- Please wash, dry & iron your fabric before beginning, and trim selvages.

CUTTING

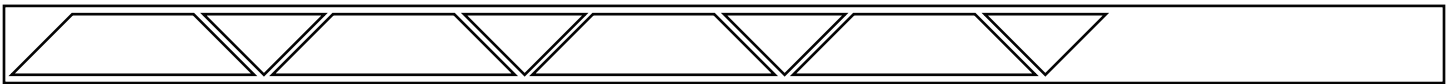
Fabric A (Background)

From each: Cut (4) 2-1/2" x WOF strips

- trace & cut (16) Template A parallelograms.
- trace & cut (16) Template B triangles.

Since this is a "scrappy" pillow, you may use as many as (16) different accent fabrics for the remaining pieces, or as few as (2). Just make sure to have enough fabric to cut a total of (16) Accent parallelograms using Template A and (4) Accent triangles using Template B.

You can fit up to (4) parallelograms & (4) triangles on a 2-1/2" x WOF strip:



You'll need a total of (4) strips' worth - 1/3 yard - of Accent fabric, or more if you're using more than (4) different fabrics.

In this version, we'll be making a pillow using (7) different Accent fabrics.

Fabric B (Accent)

Cut (1) 2-1/2" strip

- trace & cut (4) Template A parallelograms and (4) Template B triangles.

Fabrics C - H (Accent)

Cut (1) 2-1/2" strip from each

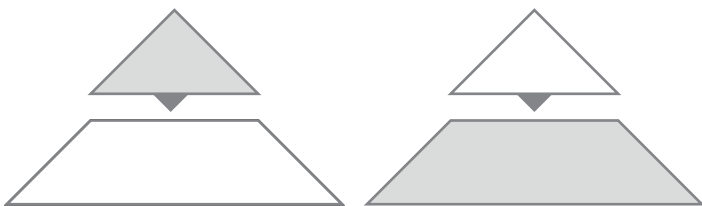
- trace & cut (2) Template A parallelograms and (2) Template B triangles.

Backing

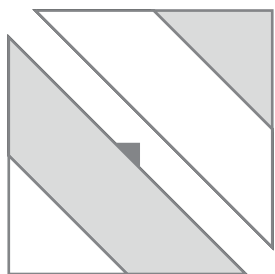
- Cut (2) 20" x 17" rectangles.

MAKING THE BLOCKS

1. Sew each Accent fabric triangle to the top of a Background fabric parallelogram.
2. Sew each Background fabric triangle to the top of an Accent fabric parallelogram.



Make (2) of each with each Accent fabric - (32) triangles total.



3. Sew (2) Accent/Background triangles together along their longest edges as shown. Use (1) triangle unit which has a Background fabric parallelogram & an Accent fabric triangle, and (1) unit which has a Background fabric triangle and a *different* Accent fabric parallelogram.

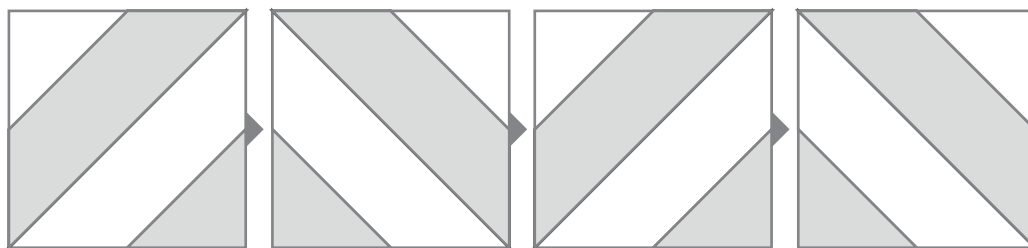
You may pair the units up at random, or use to combinations pictured in the pillow illustration on Page 1.

Make (16) in various Background/Accent combinations.

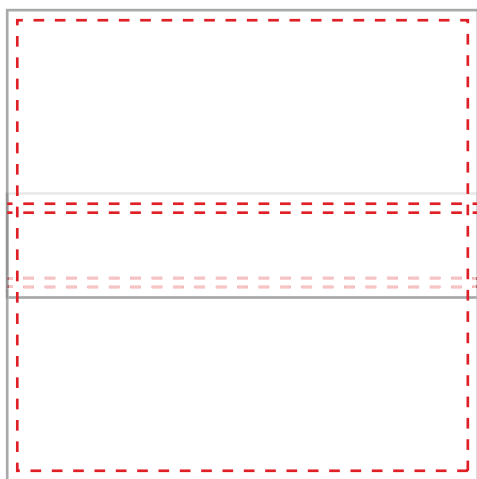
4. Trim the blocks to 5-1/2" square, as needed.

ASSEMBLY

1. Sew the blocks together in (4) rows of (4) as shown, referring to Page 1 for block orientation & placement. Sew the rows together top-to-bottom to complete the pillow front.



FINISHING THE PILLOW



1. Turn & topstitch a 1/2" rolled hem on (1) 20" edge of each Backing rectangle.
2. Place the pillow front Right Side up on your work surface, and line up the Backing panels with the edges of the pillow front, Right Sides together. The Backing panels' hemmed edges should overlap at the center of the pillow.
3. Pin & sew around the entire perimeter, clip the corners and press the seam open.
4. Turn the pillow Right Side out through the gap between the overlapping Backing panels, poke out the corners, and insert the pillow form.

TEMPLATES

